

Excellent Integrated System Limited

Stocking Distributor

Click to view price, real time Inventory, Delivery & Lifecycle Information:

[Molex Connector Corporation](#)
[0510360900](#)

For any questions, you can email us directly:

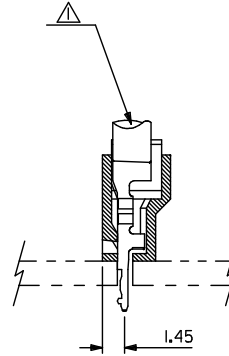
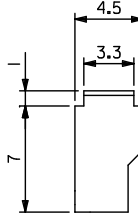
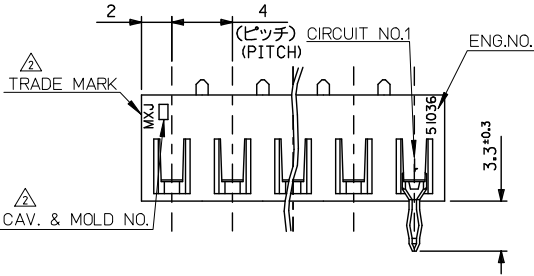
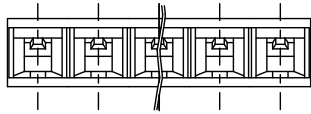
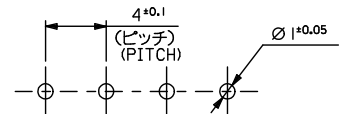
sales@integrated-circuit.com

10 9 8 7 6 5 4 3 2 1

注記
NOTE

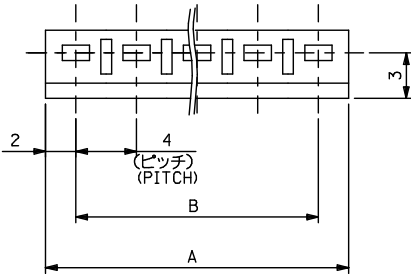
- △ 適合ターミナル: 500978*00
APPLICABLE: 500978*00
 - △ トレードマーク: MXJにて表示。
キャビティ番号: 1桁から2桁の数字にて表示。 金型番号: アルファベット1文字にて表示。
- TRADE MARK IS FORMED BY MXJ
AND BY 1-2 DIGIT NUMBER (TO CAVITY NO.)
AND BY 1 LETTER OD ALPHABET (TO MOLD NO.)
3. ELV及びRoHS適合品
ELV AND RoHS COMPLIANT.

(公差非累積)
(NON-ACCUMULATIVE)



基板取付穴推奨寸法(基板厚: 1.6mm)
RECOMMENDED PC BOARD
HOLE DIMENSION
(THICKNESS: 1.6mm)

| | | | | |
|----|----|-------|---------|----|
| 56 | 60 | 51036 | I500 | I5 |
| 52 | 56 | | I400 | I4 |
| 48 | 52 | | I300 | I3 |
| 44 | 48 | | I200 | I2 |
| 40 | 44 | | I100 | I1 |
| 36 | 40 | | I000 | I0 |
| 32 | 36 | | 0900 | 9 |
| 28 | 32 | | 0800 | 8 |
| 24 | 28 | | 0700 | 7 |
| 20 | 24 | | 0600 | 6 |
| 16 | 20 | | 0500 | 5 |
| 12 | 16 | | 0400 | 4 |
| 8 | 12 | | 0300 | 3 |
| 4 | 8 | 51036 | 0200 | 2 |
| B | A | | ENG.NO. | 標記 |



材料
MATERIAL
POLYAMIDE,UL94V-0

適用電線範囲
WIRE RANGE
AWG#22~18,AV0.5~0.85

被覆外径
INS. RANGE
φ1.8~2.6

| | | | | | | | | | |
|---|---|--|----------------|----------------------------|--------------------|--|------------------------|---------------------------|--|
| REVISED 2012/01/20 2012/09/15 2013/05/28 2013/05/28 | DESCRIPTION DRW:KAWASHIO CHK:KAWAKAWA APP:RUKITA | GENERAL TOLERANCES (UNLESS SPECIFIED) | | DIMENSION STYLE MM ONLY | | SCALE 4:1 | DESIGN UNITS METRIC | THIRD ANGLE PROJECTION | |
| | | 10 UNDER ±0.2 | 30 UNDER ±0.25 | DRAWN BY KSANO | DATE 1996/06/30 | TITLE 4.0 BOARD IN CONNECTOR HOUSING | | | |
| REV G | DESCRIPTION | 10 OVER ±0.25 | 30 OVER ±0.3 | CHECKED BY MSAKANO | DATE 1996/06/30 | DOCUMENT NO. SD-51036-001 | | | |
| | | ANGULAR ±3° | | APPROVED BY MENOMOTO | DATE 1996/06/30 | | | | |
| DRAFT WHERE APPLICABLE MUST REMAIN WITHIN DIMENSIONS | | SEE CHART | | MATERIAL NO. | | SHEET NO. 1 OF 1 | | | |
| | | | | SIZE A3 | | THIS DRAWING CONTAINS INFORMATION THAT IS PROPRIETARY TO MOLEX INCORPORATED AND SHOULD NOT BE USED WITHOUT WRITTEN PERMISSION | | | |

9 8 7 6 5 4 3 2 1