

## Excellent Integrated System Limited

Stocking Distributor

Click to view price, real time Inventory, Delivery & Lifecycle Information:

[Molex Connector Corporation](#)  
[0510361000](#)

For any questions, you can email us directly:

[sales@integrated-circuit.com](mailto:sales@integrated-circuit.com)

10 9 8 7 6 5 4 3 2 1

**注記**  
**NOTE**

△ 適合ターミナル: 500978\*00

△ APPLICABLE: 500978\*00

△ トレードマーク: MXJにて表示。

キャビティ番号: 1桁から2桁の数字にて表示。 金型番号: アルファベット1文字にて表示。

TRADE MARK IS FORMED BY MXJ

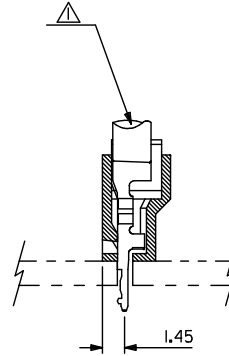
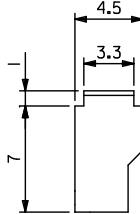
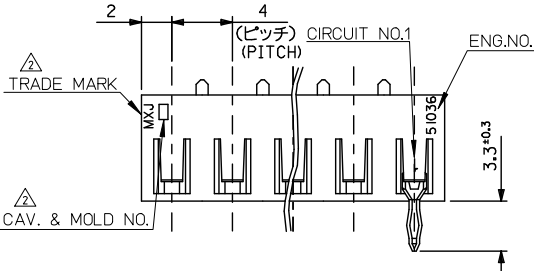
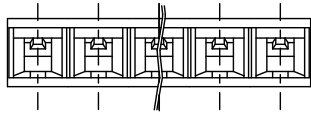
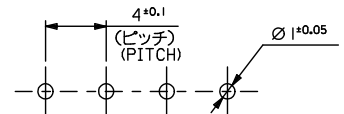
AND BY 1-2 DIGIT NUMBER (TO CAVITY NO.)

AND BY 1 LETTER OD ALPHABET (TO MOLD NO.)

3. ELV及びRoHS適合品

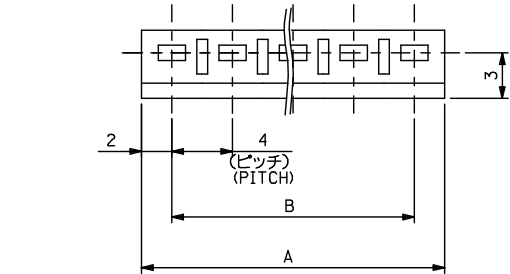
ELV AND RoHS COMPLIANT.

(公差非累積)  
(NON-ACCUMULATIVE)



基板取付穴推奨寸法(基板厚: 1.6mm)  
RECOMMENDED PC BOARD  
HOLE DIMENSION  
(THICKNESS: 1.6mm)

56	60	51036	I500	I5
52	56		I400	I4
48	52		I300	I3
44	48		I200	I2
40	44		I100	I1
36	40		I000	I0
32	36		0900	9
28	32		0800	8
24	28		0700	7
20	24		0600	6
16	20		0500	5
12	16		0400	4
8	12		0300	3
4	8	51036	0200	2
B	A		ENG.NO.	2



材料  
MATERIAL  
POLYAMIDE,UL94V-0  
適用電線範囲  
WIRE RANGE  
AWG#22~18,AV0.5~0.85  
AVSO.3~0.85  
被覆外径  
INS. RANGE  
φ1.8~2.6

REVISED 2012/01/20 2012-09/15 DRAWN BY DRINKAWASHIO 2013/05/28 CHKD BY CHIKIDAKAKAWA 2013/05/28 APPR. BY APPR.NIKITA 2013/05/28	GENERAL TOLERANCES (UNLESS SPECIFIED)		DIMENSION STYLE MM ONLY		SCALE 4:1	DESIGN UNITS METRIC	THIRD ANGLE PROJECTION
	10 UNDER	±0.2	DRAWN BY KSANO	DATE 1996/06/30	TITLE 4.0 BOARD IN CONNECTOR HOUSING		
10 OVER 30 UNDER	±0.25	CHECKED BY MSAKANO	DATE 1996/06/30	DOCUMENT NO. SD-51036-001			
30 OVER	±0.3	APPROVED BY MENOMOTO	DATE 1996/06/30				
ANGULAR	±3°	MATERIAL NO.		SHEET NO. 1 OF 1			
DRAFT WHERE APPLICABLE MUST REMAIN WITHIN DIMENSIONS		SEE CHART		THIS DRAWING CONTAINS INFORMATION THAT IS PROPRIETARY TO MOLEX INCORPORATED AND SHOULD NOT BE USED WITHOUT WRITTEN PERMISSION			