

Excellent Integrated System Limited

Stocking Distributor

Click to view price, real time Inventory, Delivery & Lifecycle Information:

[Molex Connector Corporation](#)
[0510361100](#)

For any questions, you can email us directly:

sales@integrated-circuit.com

10 9 8 7 6 5 4 3 2 1

注記
NOTE

△ 適合ターミナル: 500978*00

△ APPLICABLE: 500978*00

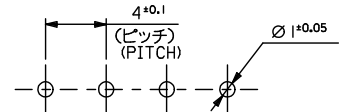
△ トレードマーク: MXJにて表示。

キャビティ番号: 1桁から2桁の数字にて表示。 金型番号: アルファベット1文字にて表示。

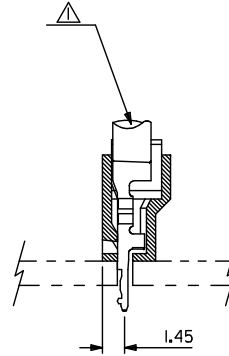
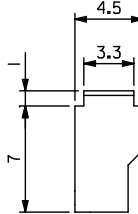
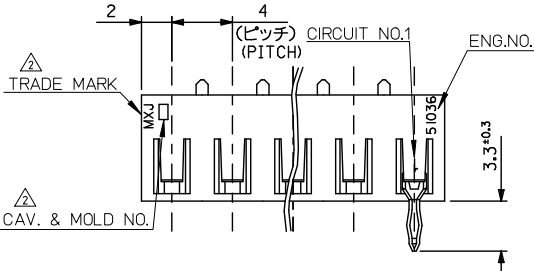
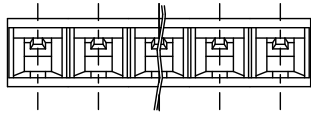
TRADE MARK IS FORMED BY MXJ
AND BY 1-2 DIGIT NUMBER (TO CAVITY NO.)
AND BY 1 LETTER OD ALPHABET (TO MOLD NO.)

3. ELV及びRoHS適合品
ELV AND RoHS COMPLIANT.

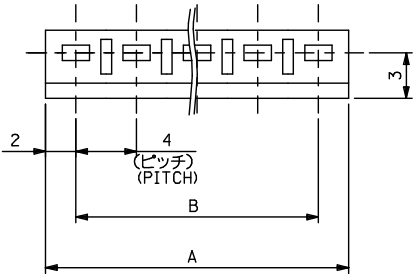
(公差非累積)
(NON-ACCUMULATIVE)



基板取付穴推奨寸法(基板厚: 1.6mm)
RECOMMENDED PC BOARD
HOLE DIMENSION
(THICKNESS: 1.6mm)



56	60	51036	I500	I5
52	56		I400	I4
48	52		I300	I3
44	48		I200	I2
40	44		I100	I1
36	40		I000	I0
32	36		0900	9
28	32		0800	8
24	28		0700	7
20	24		0600	6
16	20		0500	5
12	16		0400	4
8	12		0300	3
4	8	51036	0200	2
B	A		ENG.NO.	標記



材料
MATERIAL
POLYAMIDE,UL94V-0
適用電線範囲
WIRE RANGE
AWG#22~18,AV0.5~0.85
AVSO.3~0.85
被覆外径
INS. RANGE
φ1.8~2.6

REVISED 2012/01/20 2012-09/15 2013/05/28 2013/05/28	DESCRIPTION DRW:KAWASHIO CHK:KAWAKAWA APP:RUKITA	GENERAL TOLERANCES (UNLESS SPECIFIED)		DIMENSION STYLE MM ONLY		SCALE 4:1	DESIGN UNITS METRIC	THIRD ANGLE PROJECTION	
		10 UNDER	±0.2	DRAWN BY KSANO	DATE 1996/06/30	TITLE 4.0 BOARD IN CONNECTOR HOUSING			
REV G	REV G	10 OVER	30 UNDER	±0.25	CHECKED BY MSAKANO	DATE 1996/06/30	DOCUMENT NO. SD-51036-001		
		30 OVER		±0.3	APPROVED BY MENOMOTO	DATE 1996/06/30			
ANGULAR				±3 °	MATERIAL NO.		SHEET NO. 1 OF 1		
DRAFT WHERE APPLICABLE MUST REMAIN WITHIN DIMENSIONS		SEE CHART		THIS DRAWING CONTAINS INFORMATION THAT IS PROPRIETARY TO MOLEX INCORPORATED AND SHOULD NOT BE USED WITHOUT WRITTEN PERMISSION					

9 8 7 6 5 4 3 2 1