

## Excellent Integrated System Limited

Stocking Distributor

Click to view price, real time Inventory, Delivery & Lifecycle Information:

[Molex Connector Corporation](#)  
[0510361500](#)

For any questions, you can email us directly:

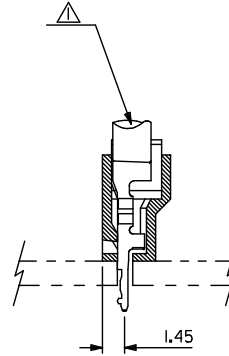
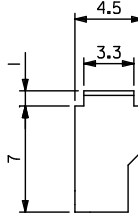
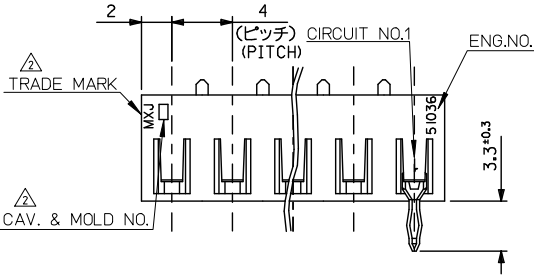
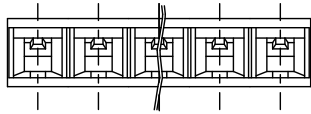
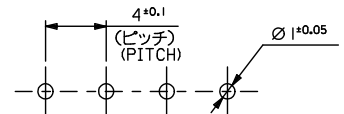
[sales@integrated-circuit.com](mailto:sales@integrated-circuit.com)

10 9 8 7 6 5 4 3 2 1

**注記**  
**NOTE**

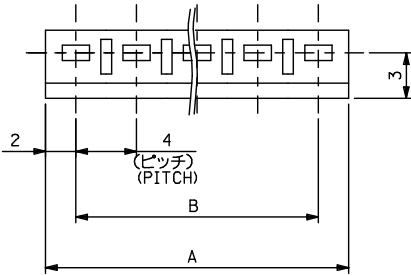
- △ 適合ターミナル: 500978\*00  
APPLICABLE: 500978\*00
  - △ トレードマーク: MXJにて表示。  
キャビティ番号: 1桁から2桁の数字にて表示。 金型番号: アルファベット1文字にて表示。
- TRADE MARK IS FORMED BY MXJ  
AND BY 1-2 DIGIT NUMBER (TO CAVITY NO.)  
AND BY 1 LETTER OD ALPHABET (TO MOLD NO.)
3. ELV及びRoHS適合品  
ELV AND RoHS COMPLIANT.

(公差非累積)  
(NON-ACCUMULATIVE)



基板取付穴推奨寸法(基板厚: 1.6mm)  
RECOMMENDED PC BOARD  
HOLE DIMENSION  
(THICKNESS: 1.6mm)

56	60	510361500	15
52	56	↑ 1400	14
48	52	1300	13
44	48	1200	12
40	44	1100	11
36	40	1000	10
32	36	0900	9
28	32	0800	8
24	28	0700	7
20	24	0600	6
16	20	0500	5
12	16	0400	4
8	12	↓ 0300	3
4	8	510360200	2
B	A	ENG.NO.	2



材料  
MATERIAL  
POLYAMIDE,UL94V-0

適用電線範囲  
WIRE RANGE  
AWG#22~18,AV0.5~0.85

被覆外径  
INS. RANGE  
φ1.8~2.6

REVISED 2012/01/20 2013/05/28 2013/05/28	DESCRIPTION G DRINKWASHIO CHIKIDAKAKAWA APPR:NIKIITA	GENERAL TOLERANCES (UNLESS SPECIFIED)		DIMENSION STYLE MM ONLY		SCALE 4:1	DESIGN UNITS METRIC	THIRD ANGLE PROJECTION
		10 UNDER ±0.2	30 UNDER ±0.25	DRAWN BY KSANO	DATE 1996/06/30	TITLE 4.0 BOARD IN CONNECTOR HOUSING		
REV G	DESCRIPTION	10 OVER ±0.25	30 OVER ±0.3	CHECKED BY MSAKANO	DATE 1996/06/30	4.0 BOARD IN CONNECTOR HOUSING		
		ANGULAR ±3°		APPROVED BY MENOMOTO	DATE 1996/06/30			
DRAFT WHERE APPLICABLE MUST REMAIN WITHIN DIMENSIONS		SEE CHART		MATERIAL NO.	DOCUMENT NO. SD-51036-001	SHEET NO. 1 OF 1		
				THIS DRAWING CONTAINS INFORMATION THAT IS PROPRIETARY TO MOLEX INCORPORATED AND SHOULD NOT BE USED WITHOUT WRITTEN PERMISSION				

9 8 7 6 5 4 3 2 1