

## Excellent Integrated System Limited

Stocking Distributor

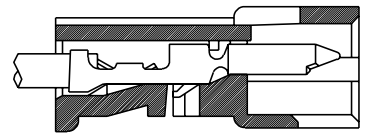
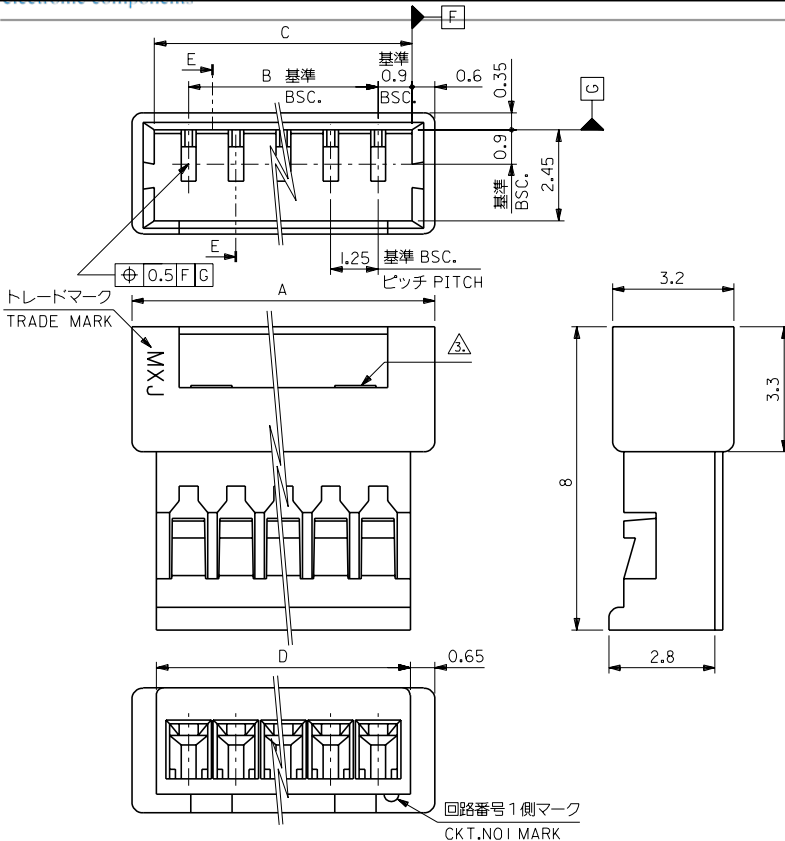
Click to view price, real time Inventory, Delivery & Lifecycle Information:

[Molex Connector Corporation](#)  
[0510470900](#)

For any questions, you can email us directly:

[sales@integrated-circuit.com](mailto:sales@integrated-circuit.com)

DWG. NO. SD-51047-\*\*\*00



断面 E-E  
SECT. E-E

注) NOTE.

- △ 適合ターミナル: 50125-8\*00,50133-8\*00  
APPLICABLE TERMINAL:50125-8\*00,50133-8\*00
- 2. 嵌合相手: 51021-\*\*\*00  
MATE WITH:51021-\*\*\*00
- △ ロック窓は、2、3 極は 1ヶ、4 極以上は 2ヶとする。  
LOCKING WINDOW: ONE PLACE FOR 2AND3CKT.  
AND TWO PLACES FOR MORE THAN 4CKT.

12.95	14.25	13.05	11.25	51047-1000	10
11.7	13	11.8	10	↑ -0900	9
10.45	11.75	10.55	8.75	↑ -0800	8
9.2	10.5	9.3	7.5	↑ -0700	7
7.95	9.25	8.05	6.25	↑ -0600	6
6.7	8	6.8	5	↑ -0500	5
5.45	6.75	5.55	3.75	↑ -0400	4
4.2	5.5	4.3	2.5	↑ -0300	3
2.95	4.25	3.05	1.25	↑ -0200	2
D	A	C	B	ENG.NO.	極数 CKT.

DO NOT SCALE DRAWING

EC NO. DRWN: CHK: APPR:	EC NO. DRWN: CHK: APPR:	EC NO. DRWN: CHK: APPR:	EC NO. DRWN: CHK: APPR:	REDRAWN EC NO. JC2000-0629 DRWN: K.KOHAMA CHK: T.YAMAGUCHI APPR: M.FUKUSHIMA	DESCRIPTION MATERIAL ポリエステル POLYESTER ,UL94V-0	GENERAL TOLERANCES: (UNLESS SPECIFIED) 一般公差	SCALE 10:1	DESIGN UNITS <input checked="" type="checkbox"/> mm <input type="checkbox"/> INCH	THIRD ANGLE PROJECTION	TITLE: 1.25 W/W CONN. PLG HSG.	DIMENSIONS: <input type="checkbox"/> mm <input type="checkbox"/> INCH <input checked="" type="checkbox"/> mm ONLY	SHT REV	
						10 UNDER 未満	±0.2	DRAWN BY & DATE K.KOHAMA 00/ 3/28					REVISION ON CAD ONLY
8	7	6	5	4	3	FINISH 仕上り	10 OVER 以上	±0.25	CHECKED BY & DATE T.YAMAGUCHI 00/ 3/30	MOLEX INCORPORATED	MATERIAL NO. 51047-***00	DRAWING NO. SD-51047-***00	SHEET NO. 1
						30 UNDER 未満	±0.3	APPROVED BY & DATE M.FUKUSHIMA 00/ 3/30	EN-02(J097) MXJ-54				
8	7	6	5	4	3	WIRE RANGE 適用電線範囲	30 OVER 以上	±0.3	CAD FILENAME S51047.S10	THIS DRAWING CONTAINS INFORMATION THAT IS PROPRIETARY TO MOLEX INCORPORATED AND SHOULD NOT BE USED WITHOUT WRITTEN PERMISSION.	SIZE B	REV	
						INS. RANGE 被覆外径	ANGLE 角度	±3°	REV				