

## Excellent Integrated System Limited

Stocking Distributor

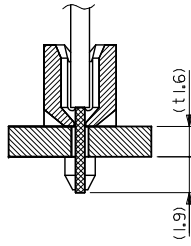
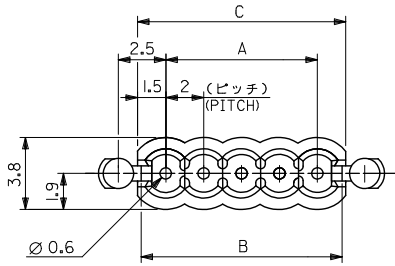
Click to view price, real time Inventory, Delivery & Lifecycle Information:

[Molex Connector Corporation](#)  
[0510480200](#)

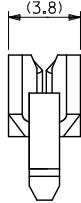
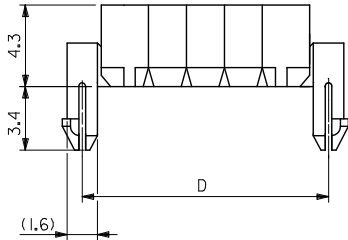
For any questions, you can email us directly:

[sales@integrated-circuit.com](mailto:sales@integrated-circuit.com)

10 9 8 7 6 5 4 3 2 1

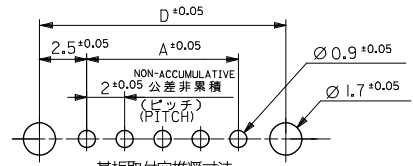


電線挿入図  
SECT.(CABLE ASS'Y)

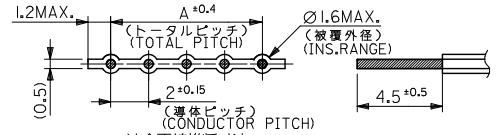


注記  
NOTES

- 材料: ナイロン66, UL94V-2  
MATERIAL: NYLON66, UL94V-2
- 適合電線: 2mmピッチリボンケーブル  
AWG#26鍍コート平行線  
APPLICABLE WIRE: 2mm PITCH RIBBON CABLE WIRE  
AWG#26, TOP COATED WIRE



基板取付穴推奨寸法  
RECOMMENDED P.C.BOARD HOLE DIM.  
(t=1.6±0.05)



適合電線推奨寸法  
RECOMMENDED WIRE DIM.

37	35	34.6	32	51048-1700	17
35	33	32.6	30	-1600	16
33	31	30.6	28	-1500	15
31	29	28.6	26	-1400	14
29	27	26.6	24	-1300	13
27	25	24.6	22	-1200	12
25	23	22.6	20	-1100	11
23	21	20.6	18	-1000	10
21	19	18.6	16	-0900	9
19	17	16.6	14	-0800	8
17	15	14.6	12	-0700	7
15	13	12.6	10	-0600	6
13	11	10.6	8	-0500	5
11	9	8.6	6	-0400	4
9	7	6.6	4	-0300	3
7	5	4.6	2	51048-0200	2
D	C	B	A	ENG. NO.	極致 CRTS.

REVISED EC NO: J2014-0350 DRAWN: SATO02 2013/08/26 CHKD: KAKAWA 2013/08/26 APPR: NIKITA 2013/08/26	GENERAL TOLERANCES (UNLESS SPECIFIED)		DIMENSION STYLE MM ONLY	SCALE 5:1	DESIGN UNITS METRIC	THIRD ANGLE PROJECTION
	10 UNDER	±0.2	DRAWN BY T. ITOH	DATE	TITLE	2.0 CABLE HOLDER (FOR 4.5 STRIP LENGTH)
	10 OVER 30 UNDER	±0.25	CHECKED BY M. FUKUSHIMA	DATE '92/02/27		
	30 OVER	±0.3	APPROVED BY M. ENOMOTO	DATE '92/02/27		
ANGULAR	±3 °	MATERIAL NO.	DOCUMENT NO.			
DRAFT WHERE APPLICABLE MUST REMAIN WITHIN DIMENSIONS			SEE TABLE			SD-51048-001
			SIZE A3	THIS DRAWING CONTAINS INFORMATION THAT IS PROPRIETARY TO MOLEX INCORPORATED AND SHOULD NOT BE USED WITHOUT WRITTEN PERMISSION		

9 8 7 6 5 4 3 2