

## Excellent Integrated System Limited

Stocking Distributor

Click to view price, real time Inventory, Delivery & Lifecycle Information:

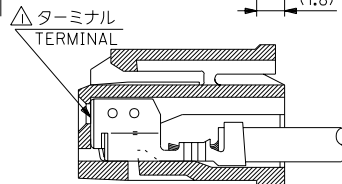
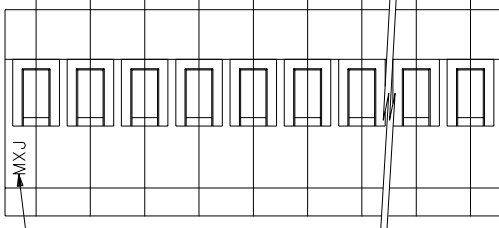
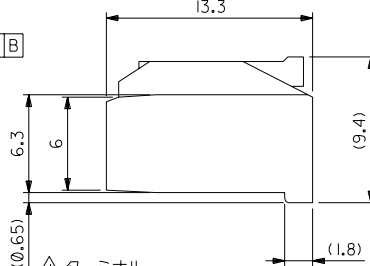
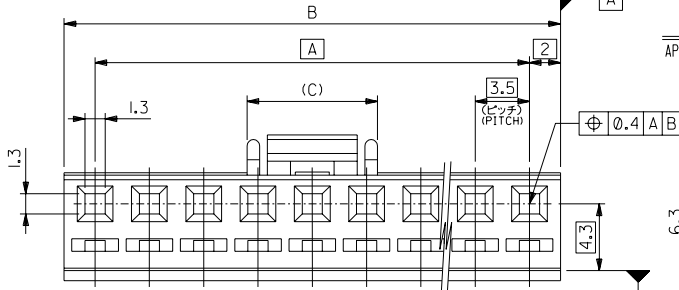
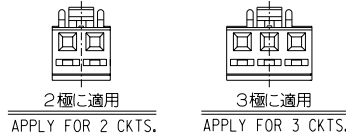
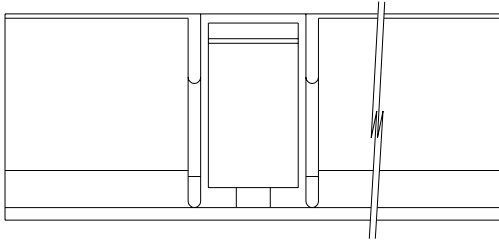
[Molex Connector Corporation](#)  
[0510670301](#)

For any questions, you can email us directly:

[sales@integrated-circuit.com](mailto:sales@integrated-circuit.com)

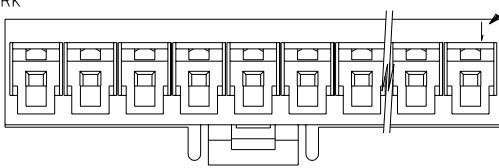
DWG. NO. SD-51067-001

DIMENSIONS IN METRIC DO NOT SCALE DRAWING



トレードマーク  
TRADE MARK

回路番号  
CIRCUIT NO.



ターミナル装着状態図  
TERMINAL ASSEMBLY DRAWING

角度 ANGLE	+3°
30以上 OVER	+0.5
10以上 30未満 OVER UNDER	+0.25
10未満 UNDER	+0.2
一般公差 GENERAL TOLERANCES	

材料 MATERIAL	PBT,UL94V-0
仕上げ FINISH	—
適用電線範囲 WIRE RANGE	—
被覆外径 INS. RANGE	—
DRAWN BY '84/06/10	CHK'D BY '84/06/10
Y.WADA	M.SASAO
APP'D BY '84/06/10	尺度 SCALE
M.SASAO	

8.4	53.0	49.0	51067-150*	15	
	49.5	45.5	-140*	14	
	46.0	42.0	-130*	13	
	42.5	38.5	-120*	12	
	39.0	35.0	-110*	11	
	35.5	31.5	-100*	10	
	32.0	28.0	-090*	9	
	28.5	24.5	-080*	8	
	25.0	21.0	-070*	7	
	21.5	17.5	-060*	6	
	18.0	14.0	-050*	5	
	8.4	14.5	10.5	-040*	4
	5.8	11.0	7.0	-030*	3
	5.8	7.5	3.5	51067-020*	2
(C)	B	A	△ MATERIAL NO.	CKT. 極数	

MODEL NO.	51067-***0*
MATERIAL	PBT,UL94V-0
仕上げ FINISH	—
適用電線範囲 WIRE RANGE	—
被覆外径 INS. RANGE	—
材料 MOLEX	MOLEX-JAPAN CO.,LTD. 日本モレックス株式会社
REVISE ONLY ON CAD SYSTEM	
TITLE 名称	3.5 WIRE TO BOARD CONN. RECEPTACLE HOUSING

DWG. NO.	SD-51067-001	REV	0
----------	--------------	-----	---

THIS DRAWING CONTAINS INFORMATION THAT IS PROPRIETARY TO MOLEX(JAPAN) AND SHOULD NOT BE USED WITHOUT WRITTEN PERMISSION  
本図面は日本モレックス(株)の所有する情報を含むもので当社の許可なく複製を禁止する。  
EN-01C(032)MXJ-32