

Excellent Integrated System Limited

Stocking Distributor

Click to view price, real time Inventory, Delivery & Lifecycle Information:

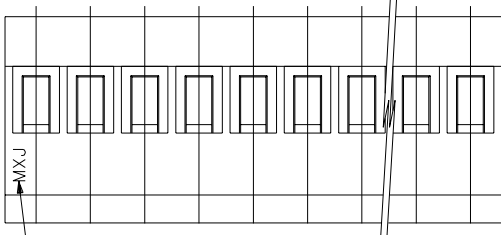
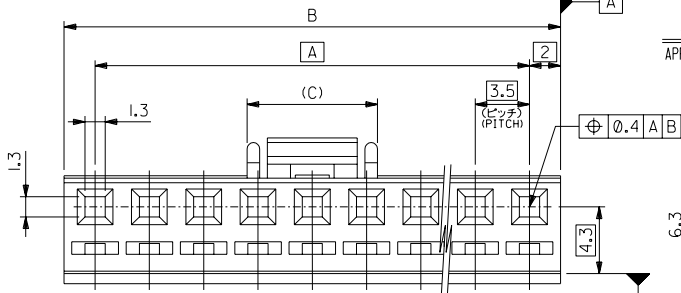
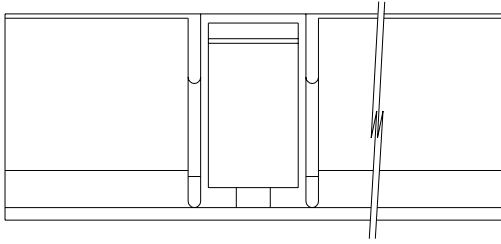
[Molex Connector Corporation](#)
[0510670304](#)

For any questions, you can email us directly:

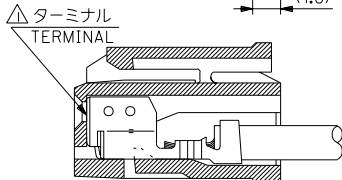
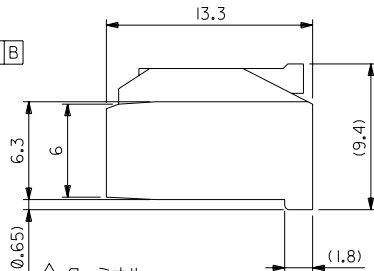
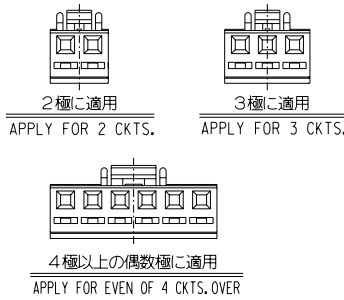
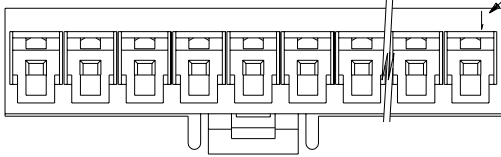
sales@integrated-circuit.com

DWG. NO. SD-51067-001

DIMENSIONS IN METRIC DO NOT SCALE DRAWING



トレードマーク
TRADE MARK



ターミナル装着状態図
TERMINAL ASSEMBLY DRAWING

角度 ANGLE	+3°
30以上 OVER	+0.5
10以上 30未満 UNDER	+0.25
10未満 UNDER	+0.2
一般公差 GENERAL TOLERANCES	

注記 NOTES

- △ 適合ターミナル: 50217 シリーズ
APPLICABLE TERMINAL: 50217 SERIES
- 2. 嵌合相手: 53258, 53265, 53259, 53266 シリーズ
MATE WITH: 53258, 53265, 53259, 53266 SERIES
- △ 製品番号の末尾は製品の色を示す。
COLOR OF WAFER CORRESPONDS TO LAST DIGIT OF MATERIAL NO.

黒	: 51067-***1
赤	: 51067-***2
黄	: 51067-***3
青	: 51067-***4
緑	: 51067-***6

8.4	53.0	49.0	51067-150*	15
	49.5	45.5	-140*	14
	46.0	42.0	-130*	13
	42.5	38.5	-120*	12
	39.0	35.0	-110*	11
	35.5	31.5	-100*	10
	32.0	28.0	-090*	9
	28.5	24.5	-080*	8
	25.0	21.0	-070*	7
	21.5	17.5	-060*	6
	18.0	14.0	-050*	5
8.4	14.5	10.5	-040*	4
5.8	11.0	7.0	-030*	3
5.8	7.5	3.5	51067-020*	2
(C)	B	A	△ MATERIAL NO.	CKT. 極数

MODEL NO. 51067-***0*

MATERIAL PBT, UL94V-0

仕上げ FINISH —#

適用電線範囲 WIRE RANGE —#

被覆外径 INS. RANGE —#

MOLEX MOLEX-JAPAN CO., LTD. 日本モレックス株式会社

REVISE ONLY ON CAD SYSTEM

TITLE 名称 3.5 WIRE TO BOARD CONN. RECEPTACLE HOUSING

DWG. NO. SD-51067-001

REV 0

THIS DRAWING CONTAINS INFORMATION THAT IS PROPRIETARY TO MOLEX (JAPAN) AND SHOULD NOT BE USED WITHOUT WRITTEN PERMISSION. 本図面は日本モレックス(株)の所有する情報を含むもので当社の許可なく複製を禁止する。

EN-01C(032)MXJ-32

8 7 6 5 4 3 2