

Excellent Integrated System Limited

Stocking Distributor

Click to view price, real time Inventory, Delivery & Lifecycle Information:

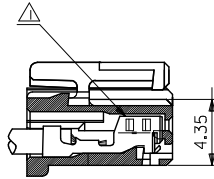
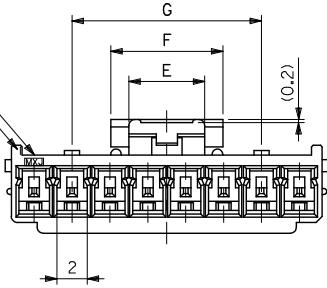
[Molex Connector Corporation](#)
[0511631000](#)

For any questions, you can email us directly:

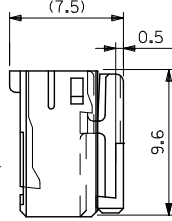
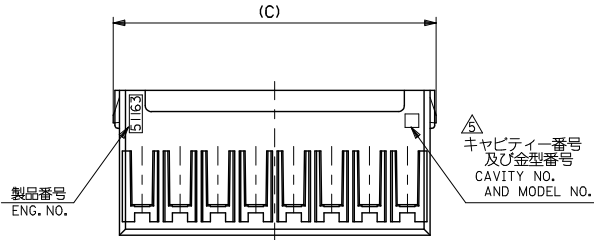
sales@integrated-circuit.com

10 9 8 7 6 5 4 3 2 1

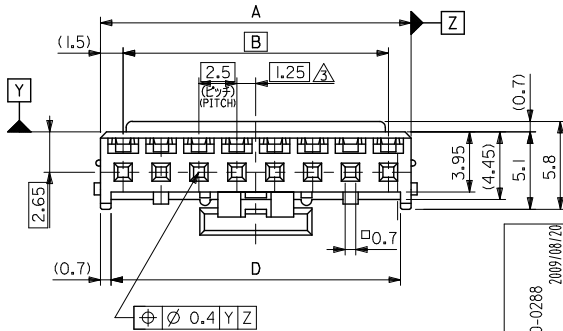
△
トレードマーク
TRADE MARK
回路番号 1
CIRCUIT NO.1



ターミナル装着状態図
TERMINAL ASSEMBLY DRAWING



12.5	7.4	5	36.6	38.8	35	38	51163-158*	15
↑	↑	↑	34.1	36.3	32.5	35.5	↑ -148*	14
			31.6	33.8	30	33	↑ -138*	13
			29.1	31.3	27.5	30.5	↑ -128*	12
			26.6	28.8	25	28	↑ -118*	11
			24.1	26.3	22.5	25.5	↑ -108*	10
			21.6	23.8	20	23	↑ -098*	9
↓			19.1	21.3	17.5	20.5	↑ -088*	8
			16.6	18.8	15	18	↑ -078*	7
			14.1	16.3	12.5	15.5	↑ -068*	6
			11.6	13.8	10	13	↑ -058*	5
	7.4	5	9.1	11.3	7.5	10.5	↑ -048*	4
	5	3	6.6	8.8	5	8	51163-038*	3



REVISED EC NO. J2010-0288 DRAWN BY GOTO CHKD BY SAKAWA APPROVED BY NAKITA	DESCRIPTION	GENERAL TOLERANCES (UNLESS SPECIFIED)	DIMENSION STYLE	SCALE	DESIGN UNITS	THIRD ANGLE PROJECTION
		10 UNDER ± 0.2	MM ONLY	4:1	METRIC	⊙ □
		10 OVER 30 UNDER ± 0.25				
		30 OVER ± 0.3				
	ANGULAR ± 3°	DRAFT WHERE APPLICABLE MUST REMAIN WITHIN DIMENSIONS	DRAWN BY DATE K. HARADA 1997/10/2		TITLE 2.5 W/B CONN HSG (POSITIVE LOCK)	
			CHECKED BY DATE T. ITO 1997/11/12		APPROVED BY DATE M. FUKUSHIMA 1997/11/12	
			MATERIAL NO. ENTER PART		MOLEX INCORPORATED	
			SIZE A3		DOCUMENT NO. SD-51163-**-00	
			THIS DRAWING CONTAINS INFORMATION THAT IS PROPRIETARY TO MOLEX INCORPORATED AND SHOULD NOT BE USED WITHOUT WRITTEN PERMISSION		SHEET NO. 1 OF 2	

10 9 8 7 6 5 4 3 2 1

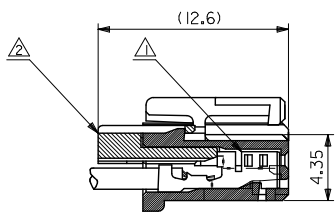
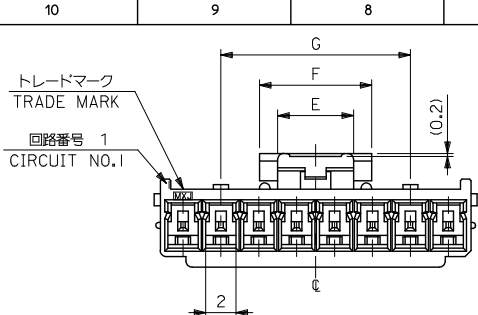
注記 NOTES

- △ 適合ターミナル : 5035I-8*00
APPLICABLE TERMINAL : 5035I-8*00
- 2. 嵌合相手 : 53375,53426 シリーズ
MATE WITH : 53375,53426 SERIES
- △ 偶数極の製品に適用。
APPLY EVEN CIRCUIT PRODUCTS.
- △ トレードマーク : Mプラス 1 ~ 2 文字のアルファベットにて構成。(例 MX J)
但し * J* は JAPANを示す。
FORMED BY M AND 1 ~ 2 MORE LETTER OF ALPHABET (e.g. MXJ)
(TO TRADE MARK), BUT *J* SHOW JAPAN.
- △ キャビティー番号 : 1桁~2桁の数字
金型番号 : アルファベット1文字にて構成。(例. 1A, 10B)
FORMED BY 1 DIGIT TO 2 DIGIT NUMBERS (TO CAVITY NO.) AND BY 1 LETTER OF ALPHABET (TO MOLD NO.).
(e.g. 1A, 10B)
- △ MATERIAL AND ORDER No.
51163-**00
極数
CIRCUIT SIZE
- 7. 材料 : PBT, UL 94V-0
- 8. 色 : 白 WHITE (NATURAL)

PRE-RELEASE
REFERENCE
USE ONLY

REVISED
EC NO. C
DRAWN BY GOTO
CHIKIDAKIKAWA
APPR.
2009/08/20

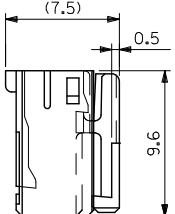
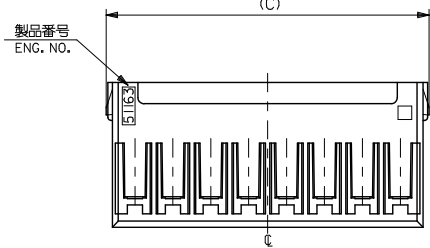
GENERAL TOLERANCES (UNLESS SPECIFIED)		DIMENSION STYLE MM ONLY		SCALE 4:1	DESIGN UNITS METRIC	THIRD ANGLE PROJECTION	
10 UNDER	± 0.2	DRAWN BY K. HARADA	DATE 1997/10/2	TITLE 2.5 W/B CONN HSG (POSITIVE LOCK)			
10 OVER 30 UNDER	± 0.25	CHECKED BY T. ITO	DATE 1997/11/12	APPROVED BY M. FUKUSHIMA			
30 OVER	± 0.3	DATE 1997/11/12		MOLEX INCORPORATED			
ANGULAR ± 3 °		MATERIAL NO.		DOCUMENT NO.		SHEET NO.	
DRAFT WHERE APPLICABLE MUST REMAIN WITHIN DIMENSIONS		ENTER PART		SD-51163-**00		2 OF 2	
THIS DRAWING CONTAINS INFORMATION THAT IS PROPRIETARY TO MOLEX INCORPORATED AND SHOULD NOT BE USED WITHOUT WRITTEN PERMISSION							



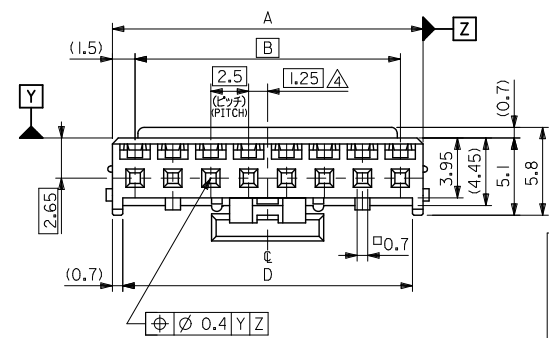
ターミナル及びリテーナー装着状態図
TERMINAL AND RETAINER ASSEMBLY DRAWING

注記 NOTES

- △ 適合ターミナル : 50752-8*00
APPLICABLE TERMINAL : 50752-8*00
- △ 適合リテーナー : 51164-***05
APPLICABLE RETAINER : 51164-***05
- 3. 嵌合相手 : 53375,53376,53388,53389,53426 シリーズ
MATE WITH : 53375,53376,53388,53389,53426 SERIES
- △ 偶数極の製品に適用。
APPLY EVEN CIRCUIT PRODUCTS.



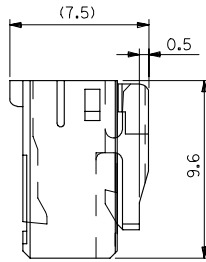
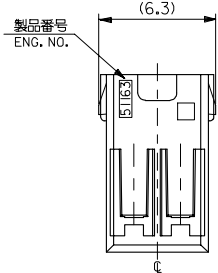
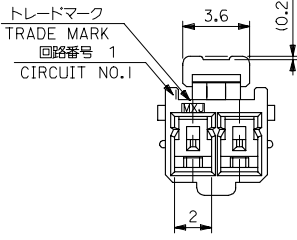
3-15 極に適用
FOR 3-15 CKTS.



	青 BLUE	赤 RED	黒 BLACK	白 NATURAL	COLOR
12.5	51163-1504	51163-1502	51163-1501	51163-1500	15
12.5	-1404	-1402	-1401	-1400	14
12.5	-1304	-1302	-1301	-1300	13
12.5	-1204	-1202	-1201	-1200	12
12.5	-1104	-1102	-1101	-1100	11
12.5	-1004	-1002	-1001	-1000	10
12.5	-0904	-0902	-0901	-0900	9
12.5	-0804	-0802	-0801	-0800	8
12.5	-0704	-0702	-0701	-0700	7
12.5	-0604	-0602	-0601	-0600	6
12.5	-0504	-0502	-0501	-0500	5
12.5	-0404	-0402	-0401	-0400	4
7.4	51163-0304	51163-0302	51163-0301	51163-0300	3
5					

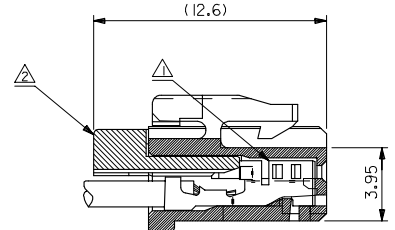
REVISED EC NO. J2005-1394 DRAWN: ISASAMOR CHKDOK: TOJO APPROV: UKITA	DESCRIPTION 2004/11/09 2004/11/10 2004/11/18	GENERAL TOLERANCES (UNLESS SPECIFIED)		DIMENSION STYLE MM ONLY		SCALE 4:1	DESIGN UNITS METRIC	THIRD ANGLE PROJECTION	
		10 UNDER ±0.2	10 OVER 30 UNDER ±0.25	30 OVER ±0.3	ANGULAR ±3°	DRAFT WHERE APPLICABLE MUST REMAIN WITHIN DIMENSIONS	TITLE 2.5 WIRE TO BORAD CONN. HOUSING (POSITIVE LOCK) WITH RETAINER		
MATERIAL PBTP, UL94V-0 SEE CHART		APPROVED BY N. UKITA		DATE 2004/8/31		MOLEX INCORPORATED		DOCUMENT NO. SD-51163-001	
REV A		SIZE A3		THIS DRAWING CONTAINS INFORMATION THAT IS PROPRIETARY TO MOLEX INCORPORATED AND SHOULD NOT BE USED WITHOUT WRITTEN PERMISSION				SHEET NO. 1 OF 2	

10 9 8 7 6 5 4 3 2 1

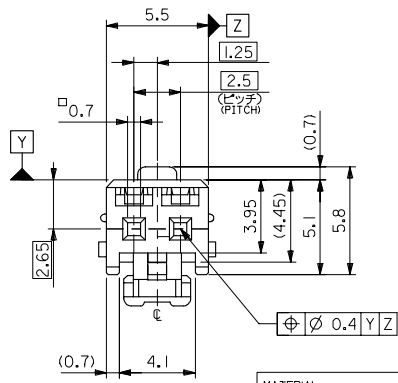


注記 NOTES

- △ 適合ターミナル : 50752-8*00
APPLICABLE TERMINAL : 50752-8*00
- △ 適合リテーナー : 51164-***05
APPLICABLE RETAINER : 51164-***05
- 3. 嵌合相手 : 53375,53426 シリーズ
MATE WITH : 53375,53426 SERIES



ターミナル及びリテーナー装着状態図
TERMINAL AND RETAINER ASSEMBLY DRAWING



2極に適用
FOR 2 CKTS.

MATERIAL
PBTP, UL94V-0
SEE CHART

青 BLUE	51163-0204	2
赤 RED	51163-0202	
黒 BLACK	51163-0201	
白 NATURAL	51163-0200	
COLOR MATERIAL NO.	MATERIAL NO.	NO. OF CKT.

REVISED EC NO: J2005-1394 DRAWN: SASAMOR 2004/11/09 CHKD: TOJO 2004/11/10 APPR: NUKITA 2004/11/18 REV: A	GENERAL TOLERANCES (UNLESS SPECIFIED)		DIMENSION STYLE MM ONLY		SCALE 5:1	DESIGN UNITS METRIC	THIRD ANGLE PROJECTION
	10 UNDER	± 0.2	DRAWN BY J. SASAMO	DATE 2004/8/31	TITLE 2.5 WIRE TO BORAD CONN. HOUSING (POSITIVE LOCK) WITH RETAINER MOLEX INCORPORATED		
	10 OVER 30 UNDER	± 0.25	CHECKED BY K. TOJO	DATE 2004/8/31			
	30 OVER	± 0.3	APPROVED BY N. UKITA	DATE 2004/8/31	MATERIAL NO. 51163-***0*	DOCUMENT NO. SD-51163-001	SHEET NO. 2 OF 2
ANGULAR ± 3 °		DRAFT WHERE APPLICABLE MUST REMAIN WITHIN DIMENSIONS		SIZE THIS DRAWING CONTAINS INFORMATION THAT IS PROPRIETARY TO MOLEX INCORPORATED AND SHOULD NOT BE USED WITHOUT WRITTEN PERMISSION			