

Excellent Integrated System Limited

Stocking Distributor

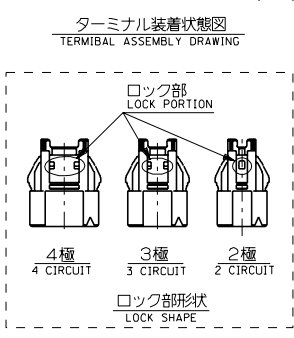
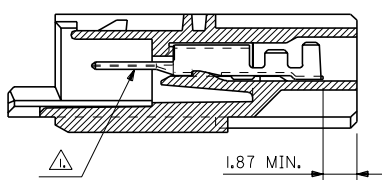
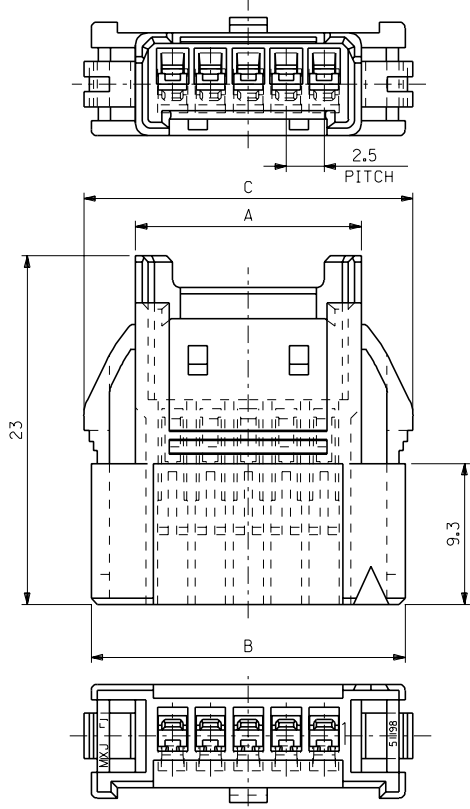
Click to view price, real time Inventory, Delivery & Lifecycle Information:

[Molex Connector Corporation](#)
[0511981100](#)

For any questions, you can email us directly:

sales@integrated-circuit.com

DWG. NO. SD-51198-002



ターミナル装着状態図
TERMINAL ASSEMBLY DRAWING

ロック部
LOCK PORTION

4極
4 CIRCUIT

3極
3 CIRCUIT

2極
2 CIRCUIT

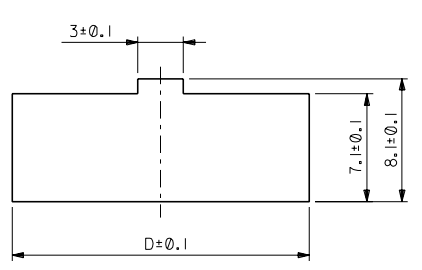
ロック部形状
LOCK SHAPE

注記
NOTES.

△ 適合端子 : 50837-8*00
APPLICABLE TERMINAL

2.本図は、5種を示す。
5 CIRCUIT VERSION IS SHOWN
IN THIS DRAWING.

3.ハウジングは、パネル打ち抜き側から
挿入すること。
INSERT HOUSING FROM PUNCH
SIDE OF PANEL



参考/パネルスロット寸法
PANEL SLOT DIM.(REF.)
(パネル厚: 0.8 ~ 2.0)
(THICKNESS : 0.8 ~ 2.0)

44.6	46.7	45.7	39.9	51198-1500	15
42.1	44.2	43.2	37.4	-1400	14
39.6	41.7	40.7	34.9	-1300	13
37.1	39.2	38.2	32.4	-1200	12
34.6	36.7	35.7	29.9	-1100	11
32.1	34.2	33.2	27.4	-1000	10
29.6	31.7	30.7	24.9	-0900	9
27.1	29.2	28.2	22.4	-0800	8
24.6	26.7	25.7	19.9	-0700	7
22.1	24.2	23.2	17.4	-0600	6
19.6	21.7	20.7	14.9	-0500	5
17.1	19.2	18.2	12.4	-0400	4
14.6	16.7	15.7	9.9	-0300	3
12.1	14.2	13.2	7.4	51198-0200	2
D	C	B	A	製品番号 MATERIAL NO.	NO. OF CIRCUIT

DO NOT SCALE DRAWING	EC NO. DRWN: CHK: APPR:	EC NO. DRWN: CHK: APPR:	EC NO. DRWN: CHK: APPR:	変更 REVISSED EC NO. JD2000-0620 DRWN: M.YAGI '99/2/16 CHK: S.HIKAWA/Y.ITO APPR: H.IKESUGI 新編作製 RELEASED EC NO. JD90181 DRWN: M.YAGI '98/05/14 CHK: Y.ITO APPR: H.IKESUGI	MATERIAL 材料 ポリエステル(PBT) POLYESTER 色:白 COLOR: WHITE UL94V-0	GENERAL TOLERANCES: (UNLESS SPECIFIED) 一般公差 10 UNDER 未満 ±0.2 10 OVER 以上 ±0.25 30 UNDER 未満 ±0.25 30 OVER 以上 ±0.3 ANGLE 角度 ±3°	SCALE 4:1 DESIGN UNITS 一般公差 DRAWN BY & DATE Y.Ogawa '98/05/14 CHECKED BY & DATE Y.Ogawa APPROVED BY & DATE Y.Ogawa CAD FILE NAME 51198002.S01	THIRD ANGLE PROJECTION TITLE: 2.5 WIRE TO BOARD CONN. PANEL MOUNT HSG MOLEX INCORPORATED	DIMENSIONS: 一般公差 mm INCH mm ONLY	SHT REV REVISE ON CAD ONLY

8 7 6 5 4 3 2 1