

Excellent Integrated System Limited

Stocking Distributor

Click to view price, real time Inventory, Delivery & Lifecycle Information:

[Molex Connector Corporation](#)
[0512160900](#)

For any questions, you can email us directly:

sales@integrated-circuit.com

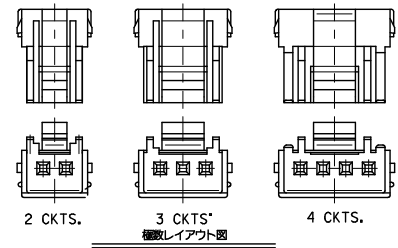
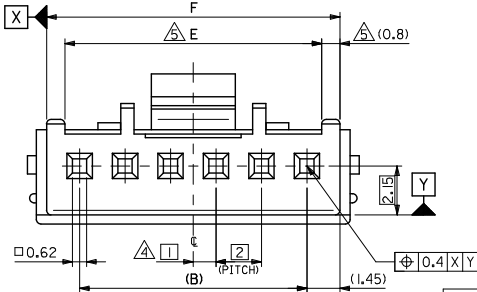
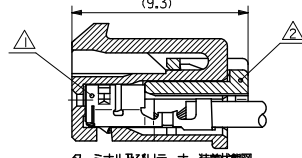
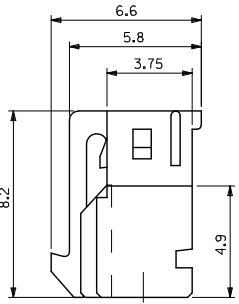
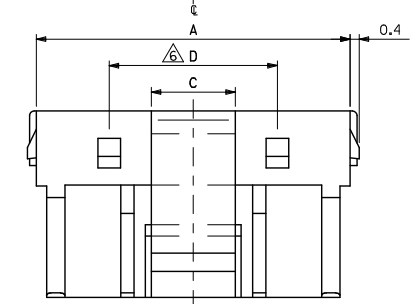
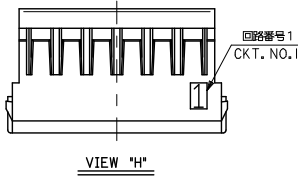
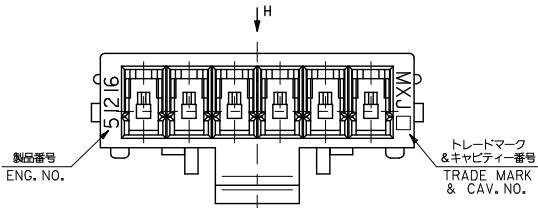
CONFIDENTIAL

ELV AND RoHS COMPLIANT

注記
NOTES

- △ 適合ターミナル : 59370シリーズ
APPLICABLE TERMINAL : 59370 SERIES
- △ 適合リテーナー : 51217シリーズ
APPLICABLE RETAINER : 51217 SERIES
- 3. 嵌合相手 : 55487, 55755シリーズ
MATE WITH : 55487, 55755
偶数極に適用。
APPLY EVEN CIRCUIT PRODUCTS.
- △ 4~15極に適用。
APPLY 4-15 CIRCUITS.
- △ 5~15極に適用。
APPLY 5-15 CIRCUITS.
- 7. ELVおよびRoHS適合品
ELV AND RoHS COMPLIANT
- 8. ハッチングの色 (MATERIAL NO. の下1桁に対応) :
HSG COLOR:

WHITE :	51216-***0
BLACK :	51216-***1
RED :	51216-***2
YELLOW :	51216-***3
BLUE :	51216-***4
GREEN :	51216-***6



30.9	29.3	7.4	3.7	28	31.8	51216-150*	15
28.9	27.3			26	29.8		-140* 14
26.9	25.3			24	27.8		-130* 13
24.9	23.3			22	25.8		-120* 12
22.9	21.3			20	23.8		-110* 11
20.9	19.3			18	21.8		-100* 10
18.9	17.3			16	19.8		-090* 9
16.9	15.3			14	17.8		-080* 8
14.9	13.3			12	15.8		-070* 7
12.9	11.3			10	13.8		-060* 6
10.9	9.3	7.4		8	11.8		-050* 5
8.9	7.3			6	9.8		-040* 4
6.9				4	7.8		-030* 3
4.9				2	5.8		51216-020* 2

LAYOUT OF EACH CKTS.

GENERAL TOLERANCES (UNLESS SPECIFIED)

10 UNDER	± 0.2
10 OVER 30 UNDER	± 0.25
30 OVER	± 0.3
ANGULAR	± 3°

DRAFT WHERE APPLICABLE
MUST REMAIN WITHIN DIMENSIONS

DIMENSION STYLE

MM ONLY

DRAWN BY	DATE	TITLE
T. YASUI	'00/2/22	2.0MM WIRE TO BOARD RECEPTACLE HOUSING
CHECKED BY	DATE	
T. YAMAGUCHI	'00/2/22	
APPROVED BY	DATE	
M. FUKUSHIMA	'00/2/22	

SCALE

--- METRIC

DESIGN UNITS	THIRD ANGLE PROJECTION
METRIC	

材料 MATERIAL	PBTP, UL94V-0
仕上げ FINISH	—
適用電線範囲 WIRE RANGE	—
被覆外径 INS. RANGE	—

REVISED	2014/03/03
EC NO.	J2014-1352
DRW.	TAJI MAO1
CHKD.	KASAKAWA
APPR.	MUKITA
REV	2014/03/03

SEE TABLE

THIS DRAWING CONTAINS INFORMATION THAT IS PROPRIETARY TO MOLEX INCORPORATED AND SHOULD NOT BE USED WITHOUT WRITTEN PERMISSION



DOCUMENT NO. SD-51216-004

SHEET NO. 1 OF 1