

## Excellent Integrated System Limited

Stocking Distributor

Click to view price, real time Inventory, Delivery & Lifecycle Information:

[Molex Connector Corporation](#)  
[0512161300](#)

For any questions, you can email us directly:

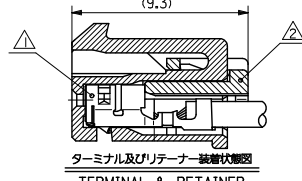
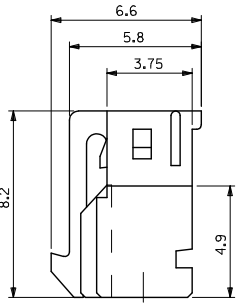
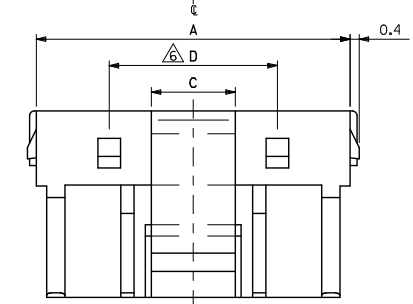
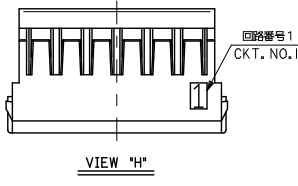
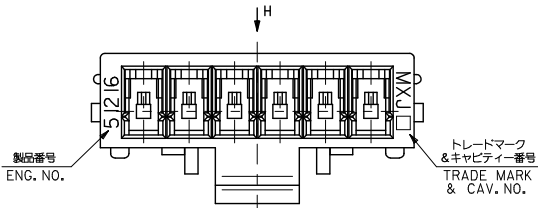
[sales@integrated-circuit.com](mailto:sales@integrated-circuit.com)

CONFIDENTIAL

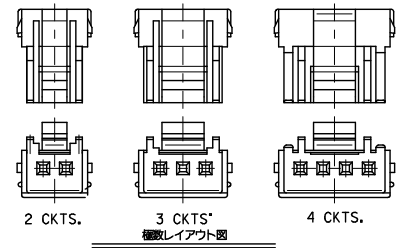
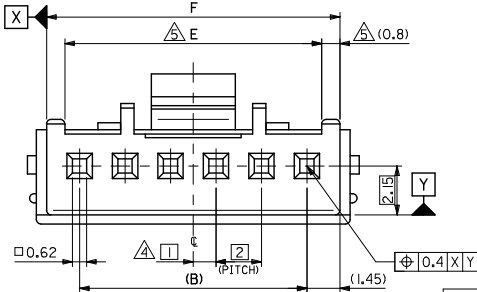
ELV AND RoHS COMPLIANT

注記  
NOTES

- △ 適合ターミナル : 59370シリーズ  
APPLICABLE TERMINAL : 59370 SERIES
- △ 適合リテーナー : 51217シリーズ  
APPLICABLE RETAINER : 51217 SERIES
- 3. 嵌合相手 : 55487, 55755シリーズ  
MATE WITH : 55487, 55755  
偶数極に適用。  
APPLY EVEN CIRCUIT PRODUCTS.
- △ 4~15極に適用。  
APPLY 4-15 CIRCUITS.
- △ 5~15極に適用。  
APPLY 5-15 CIRCUITS.
- 7. ELVおよびRoHS適合品  
ELV AND RoHS COMPLIANT
- 8. ハッチングの色 (MATERIAL NO. の下1桁に対応) :  
HSG COLOR: WHITE: 51216-\*\*\*0  
BLACK: 51216-\*\*\*1  
RED: 51216-\*\*\*2  
YELLOW: 51216-\*\*\*3  
BLUE: 51216-\*\*\*4  
GREEN: 51216-\*\*\*6



ターミナル及びリテーナー 接合状態図  
TERMINAL & RETAINER ASSEMBLY DRAWING



30.9	29.3	7.4	3.7	28	31.8	51216-150*	15
28.9	27.3			26	29.8	-140*	14
26.9	25.3			24	27.8	-130*	13
24.9	23.3			22	25.8	-120*	12
22.9	21.3			20	23.8	-110*	11
20.9	19.3			18	21.8	-100*	10
18.9	17.3			16	19.8	-090*	9
16.9	15.3			14	17.8	-080*	8
14.9	13.3			12	15.8	-070*	7
12.9	11.3			10	13.8	-060*	6
10.9	9.3	7.4		8	11.8	-050*	5
8.9	7.3			6	9.8	-040*	4
6.9				4	7.8	-030*	3
4.9				2	5.8	51216-020*	2

LAYOUT OF EACH CKTS.

GENERAL TOLERANCES (UNLESS SPECIFIED)

10 UNDER	± 0.2
10 OVER 30 UNDER	± 0.25
30 OVER	± 0.3
ANGULAR	± 3°

DRAFT WHERE APPLICABLE  
MUST REMAIN WITHIN DIMENSIONS

DIMENSION STYLE  
MM ONLY

DRAWN BY	DATE	TITLE
T. YASUI	'00/2/22	2.0MM WIRE TO BOARD RECEPTACLE HOUSING
CHECKED BY	DATE	
T. YAMAGUCHI	'00/2/22	
APPROVED BY	DATE	
M. FUKUSHIMA	'00/2/22	

2.0MM WIRE TO BOARD RECEPTACLE HOUSING



SD-51216-004

SHEET NO. 1 OF 1

SEE TABLE  
THIS DRAWING CONTAINS INFORMATION THAT IS PROPRIETARY TO MOLEX INCORPORATED AND SHOULD NOT BE USED WITHOUT WRITTEN PERMISSION

材料 MATERIAL	PBTP, UL94V-0
仕上げ FINISH	—
適用電線範囲 WIRE RANGE	—
被覆外径 INS. RANGE	—

REVISED	2014/03/03
EC NO.	J2014-1352
DRW	TAJI MAO1
CHK	KASAKAWA
APP	MUKITA
REV	2014/03/03