

Excellent Integrated System Limited

Stocking Distributor

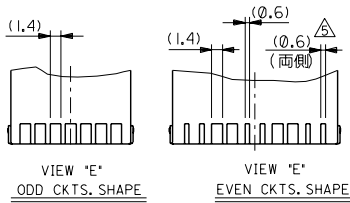
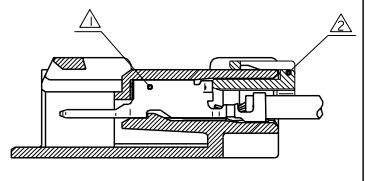
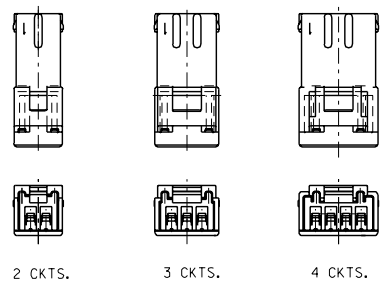
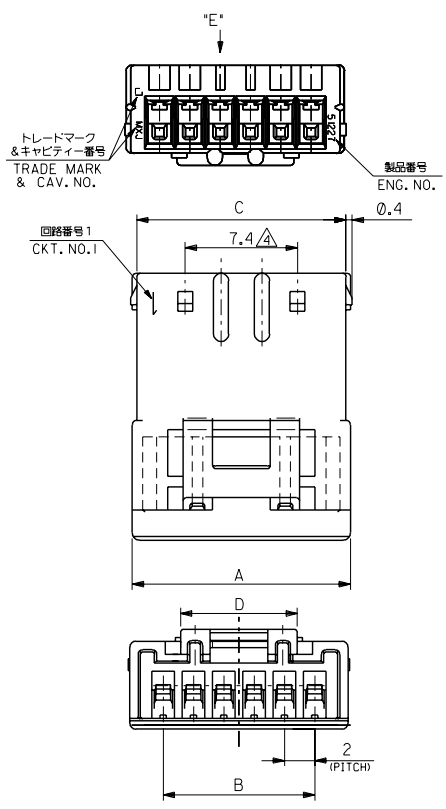
Click to view price, real time Inventory, Delivery & Lifecycle Information:

[Molex Connector Corporation](#)
[0512270600](#)

For any questions, you can email us directly:

sales@integrated-circuit.com

DWG. NO. SD-51227-002



- 注記
NOTES
- △ 適合ターミナル : 56086シリーズ
 - △ 適合リテーナー : 51217シリーズ
APPLICABLE RETAINER : 51217 SERIES
 - 3. 適合相手 : 51216シリーズ
MATE WITH : 51216 SERIES
 - △ 5~15番に適用。
APPLY 5-15 CIRCUITS.
 - △ 10, 12, 14番に適用。
APPLY 10, 12, 14 CIRCUITS.

7.7	31.8	28	32.4	51227-1500	15
29.8	26	30.4		-1400	14
27.8	24	28.4		-1300	13
25.8	22	26.4		-1200	12
23.8	20	24.4		-1100	11
21.8	18	22.4		-1000	10
19.8	16	20.4		-0900	9
17.8	14	18.4		-0800	8
15.8	12	16.4		-0700	7
13.8	10	14.4		-0600	6
11.8	8	12.4		-0500	5
9.8	6	10.4		-0400	4
7.7	7.8	8.4		-0300	3
6.4	5.8	6.4		51227-0200	2
D	C	B	A	MATERIAL NO. CKT.	

DO NOT SCALE DRAWING		EC NO. DRWN: CHK: APPR:		EC NO. DRWN: CHK: APPR:		EC NO. DRWN: CHK: APPR:		EC NO. DRWN: CHK: APPR:		01/06/21 RELEASED EC NO. JC2001-002 DRWN: H.II CHK: T.YAMAGUCHI APPR: T.YAMAGUCHI		MATERIAL 材料 PBTP, UL94V-0 [色: 自然色] [COLOR: NATURAL]		GENERAL TOLERANCES: (UNLESS SPECIFIED) 一般公差		SCALE 51227-***00 DESIGN UNITS <input checked="" type="checkbox"/> mm <input type="checkbox"/> INCH		MODEL NO. 51227-002		DIMENSIONS: <input type="checkbox"/> mm <input type="checkbox"/> INCH <input checked="" type="checkbox"/> mm ONLY		SHT 1 REV 1	
FINISH 仕上げ		//		WIRE RANGE 適用電線範囲		//		INS. RANGE 被覆外径		//		10 UNDER 未満 ±0.2 10 OVER 以上 30 UNDER 未満 ±0.25 30 OVER 以上 ±0.3		DRAWN BY & DATE H.II 01/06/21 CHECKED BY & DATE T.YAMAGUCHI 01/06/21 APPROVED BY & DATE T.YAMAGUCHI 01/06/21		THIRD ANGLE PROJECTION <input checked="" type="checkbox"/> mm <input type="checkbox"/> INCH		TITLE: 2.0 mm WIRE TO WIRE CONN. PLUG HOUSING		MOLEX INCORPORATED			
8		7		6		5		4		3		2		1		EN-02J(097) MXJ-54		SHEET NO. 1 OF 1					

A
51227002.S01