

Excellent Integrated System Limited

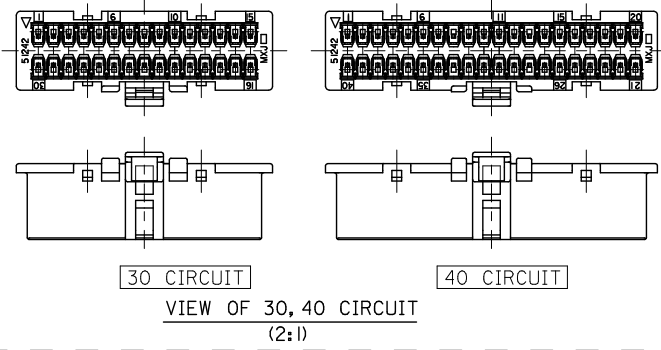
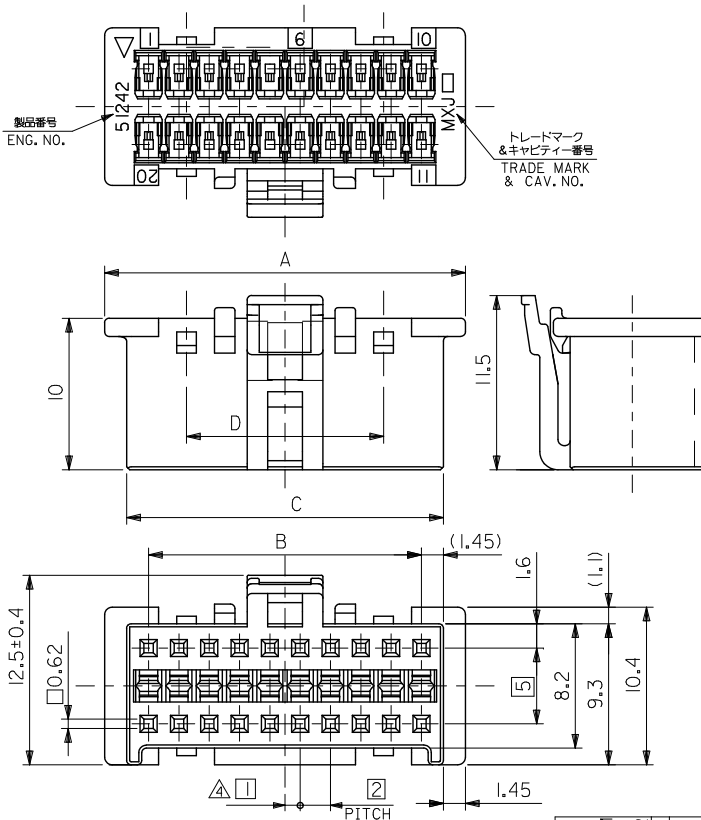
Stocking Distributor

Click to view price, real time Inventory, Delivery & Lifecycle Information:

[Molex Connector Corporation](#)
[0512422000](#)

For any questions, you can email us directly:
sales@integrated-circuit.com

10 9 8 7 6 5 4 3 2 1



- 注記 NOTES**
- △ 適合ターミナル : 56134シリーズ
APPLICABLE TERMINAL : 56134 SERIES
 - △ 適合リテーナー : 56767シリーズ
APPLICABLE RETAINER : 55767 SERIES
 - 3. 嵌合相手 : 56763シリーズ
MATE WITH : 55763 SERIES
(全極数/2) = 偶数の場合に適用
APPLY FOR (CIRCUIT/2)=EVEN
 - △ 製品番号
MATERIAL NO.
51242-***0*

極数 CIRCUIT SIZE	色 COLOR	ナチュラル(白) NATURAL(WHITE)	0
		赤 RED	2

25	40.9	38	43.8	51242-400*	40
15	30.9	28	33.8	51242-300*	30
13	20.9	18	23.8	51242-200*	20
D	C	B	A	△ MATERIAL NO. CKT.	

部品 PART	材質 MATERIAL
ハウジング HOUSING	ポリアミド (PA66)、ガラス入り、GLASS FILLED 66 NYLON, UL94V-0, 色:表参照 COLOR: SEE CHART

REVISED EC NO. J2011-0908 DRAWN BY NITO CHKD: KASAKAWA APPR: NIIMAKITA	2011/01/11	GENERAL TOLERANCES (UNLESS SPECIFIED)	DIMENSION STYLE MM ONLY	SCALE 4:1	DESIGN UNITS METRIC	THIRD ANGLE PROJECTION
	2011/01/12	10 UNDER ± 0.2	DRAWN BY DATE NITO '01/04/02	TITLE 2.0 DUAL W/B CONN RCPT HSG		
		10 OVER 30 UNDER ± 0.25	CHECKED BY DATE KASAKAWA '01/08/02	MOLEX INCORPORATED		
		30 OVER ± 0.3	APPROVED BY DATE TYAMAGUCHI '01/08/02	DOCUMENT NO. SD-51242-002		
	ANGULAR ± 3°	DRAFT WHERE APPLICABLE MUST REMAIN WITHIN DIMENSIONS	MATERIAL NO. SEE CHART	SHEET NO. 1 OF 1		
			SIZE A3 THIS DRAWING CONTAINS INFORMATION THAT IS PROPRIETARY TO MOLEX INCORPORATED AND SHOULD NOT BE USED WITHOUT WRITTEN PERMISSION			