

Excellent Integrated System Limited

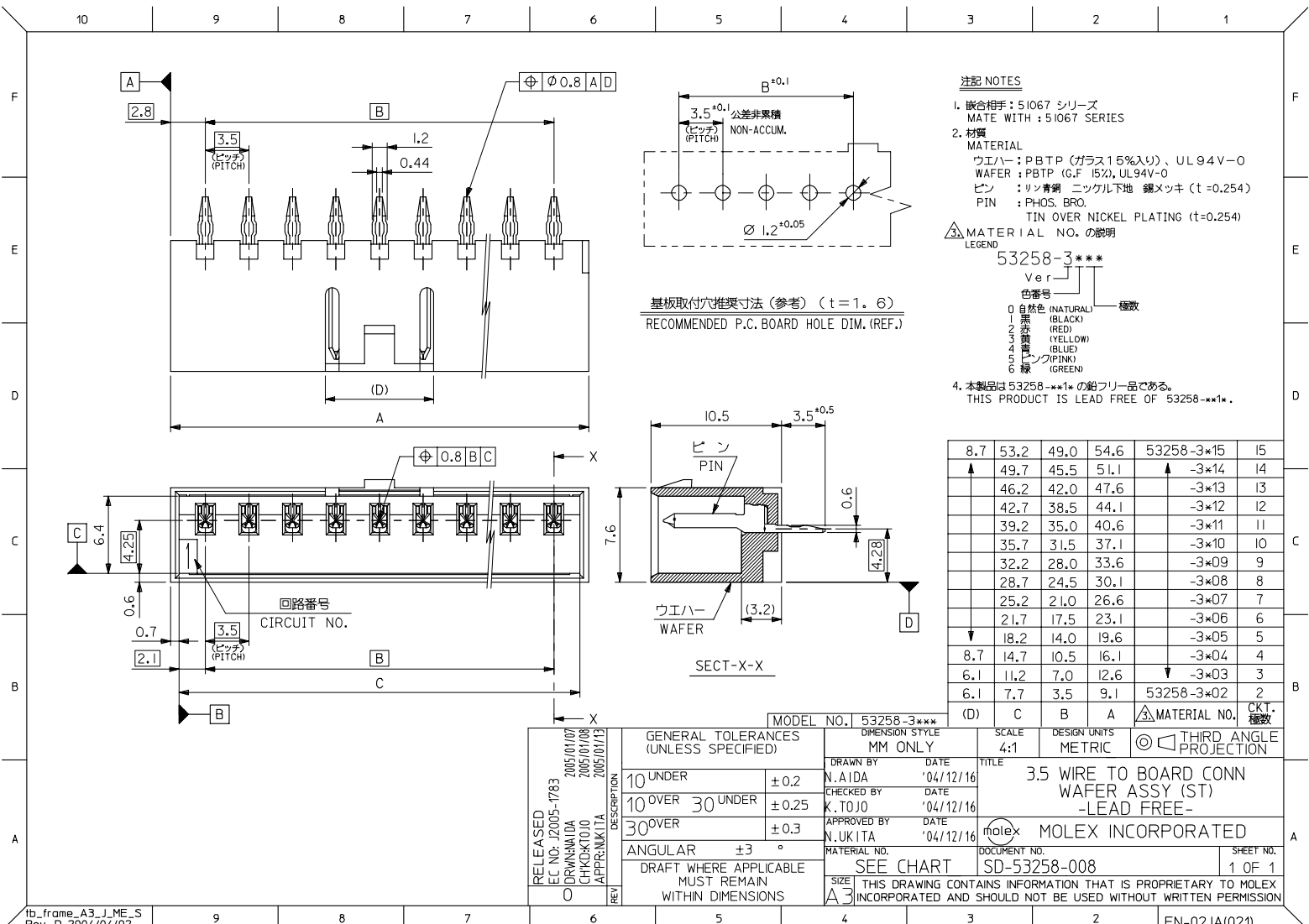
Stocking Distributor

Click to view price, real time Inventory, Delivery & Lifecycle Information:

[Molex Connector Corporation](#)
[0532583006](#)

For any questions, you can email us directly:

sales@integrated-circuit.com



注記 NOTES

- 嵌合相手: 51067 シリーズ
MATE WITH: 51067 SERIES
- 材質 MATERIAL
ウエハー: PBTP (ガラス15%入り)、UL94V-0
WAFER: PBTP (G.F. 15%), UL94V-0
ピン: リン青銅 ニッケル下地 鍍メッキ (t=0.254)
PIN: PHOS. BRO. TIN OVER NICKEL PLATING (t=0.254)

△ MATERIAL NO. の説明
LEGEND

53258-3***
Ver. 1
色番号 0 極数

0 自然色 (NATURAL) (BLACK)
1 黒 (BLACK)
2 赤 (RED)
3 黄 (YELLOW)
4 青 (BLUE)
5 ピンク (PINK)
6 緑 (GREEN)

4. 本製品は 53258-***1* の鉛フリー品である。
THIS PRODUCT IS LEAD FREE OF 53258-***1*.

8.7	53.2	49.0	54.6	53258-3*15	15
↑	49.7	45.5	51.1	↑	-3*14
	46.2	42.0	47.6		-3*13
	42.7	38.5	44.1		-3*12
	39.2	35.0	40.6		-3*11
	35.7	31.5	37.1		-3*10
	32.2	28.0	33.6		-3*09
	28.7	24.5	30.1		-3*08
	25.2	21.0	26.6		-3*07
	21.7	17.5	23.1		-3*06
↓	18.2	14.0	19.6		-3*05
8.7	14.7	10.5	16.1		-3*04
6.1	11.2	7.0	12.6		-3*03
6.1	7.7	3.5	9.1	53258-3*02	2

RELEASED	2005/01/07	DESCRIPTION	MODEL NO.	53258-3***	SCALE	4:1	DESIGN UNITS	METRIC	THIRD ANGLE PROJECTION
EC NO.	J2005-1783	GENERAL TOLERANCES (UNLESS SPECIFIED)	DRAWN BY	N.AIDA	DATE	'04/12/16	TITLE		
DRW	N.M.I.D.A.	10 UNDER ±0.2	CHECKED BY	K.TOJO	DATE	'04/12/16	3.5 WIRE TO BOARD CONN WAFER ASSY (ST) -LEAD FREE-		
CHK	K.T.O.J.O.	10 OVER ±0.25	APPROVED BY	N.UKITA	DATE	'04/12/16	Molex MOLEX INCORPORATED		
APP	N.UKITA	30 OVER ±0.3	MATERIAL NO.	SEE CHART	DOCUMENT NO.	SD-53258-008	SHEET NO. 1 OF 1		
REV		ANGULAR ±3°	SIZE	A3	THIS DRAWING CONTAINS INFORMATION THAT IS PROPRIETARY TO MOLEX INCORPORATED AND SHOULD NOT BE USED WITHOUT WRITTEN PERMISSION				
		DRAFT WHERE APPLICABLE MUST REMAIN WITHIN DIMENSIONS							