

Excellent Integrated System Limited

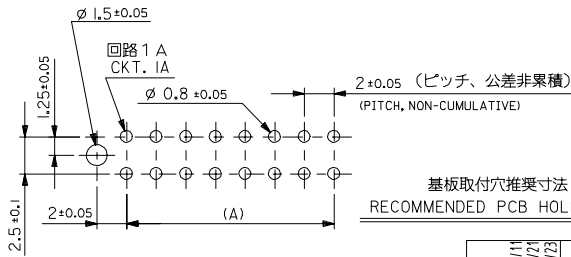
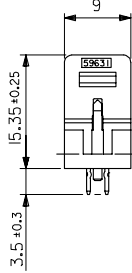
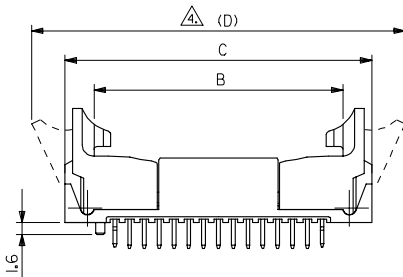
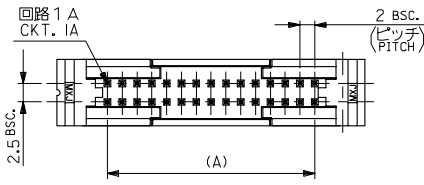
Stocking Distributor

Click to view price, real time Inventory, Delivery & Lifecycle Information:

[Molex Connector Corporation](#)
[0533144065](#)

For any questions, you can email us directly:
sales@integrated-circuit.com

10 9 8 7 6 5 4 3 2 1



基板取付穴推奨寸法 (参考)
RECOMMENDED PCB HOLE DIM.(REF.)

注記
NOTES

1. 材料:
MATERIALS:
ウエハー : ガラス入り 66ナイロン
UL94V-0 色: グレー
WAFER : GLASS FILLE 66 NYLON
UL94V-0, COLOR : GRAY
ピン : 黄銅, スズメッキ
PIN : BRASS, PRE-TINNED
2. 適合メスコネクター
MATING CONNECTORS : 51089-***5, 52478-***15.
3. 推奨基板厚:
RECOMMENDED PCB THICKNESS : t
イジェクトが開いている状態。
EJECTORS IN OPEN POSITION
4. メッキ仕様
TERMINAL PLATING
表面メッキ : スズメッキ 14μm MIN.
SURFACE PLATE : TIN 14μm MIN.
下地メッキ : ニッケルメッキ 0.54μm MIN.
UNDER PLATE : NICKEL 0.54μm MIN.

無鉛
LEAD FREE

| | | | | | |
|------|------|------|-----|--------------|------|
| 80.4 | 71.4 | 63.6 | 58 | 53314-6065 | 60 |
| 70.4 | 61.4 | 53.6 | 48 | -5065 | 50 |
| 60.4 | 51.4 | 43.6 | 38 | -4065 | 40 |
| 54.4 | 45.4 | 37.6 | 32 | -3465 | 34 |
| 50.4 | 41.4 | 33.6 | 28 | 53314-3065 | 30 |
| (D) | C | B | (A) | MATERIAL NO. | CKT. |

MATERIAL
材料
注記参照
SEE NOTES

| | | | | | | |
|--|------------------|---|----------------------------|------------------------------|---|---------------------------|
| REVISED EC NO: J2007-0432 DRW/KSAI T001 2006/08/11 CHKD: THARYAMA 2006/08/21 APPR: NIKITA 2006/08/23 | DESCRIPTION | GENERAL TOLERANCES (UNLESS SPECIFIED) | DIMENSION STYLE MM ONLY | SCALE 2:1 | DESIGN UNITS METRIC | THIRD ANGLE PROJECTION |
| | 10 UNDER | ±0.2 | DRAWN BY A. IIDA | DATE 2003/05/07 | TITLE 2.0 W/B DUAL ROW S/T HEADER WITH EJECT ASSY | |
| | 10 OVER 30 UNDER | ±0.25 | CHECKED BY J. MIYAZAWA | DATE 2003/05/07 | MOLEX INCORPORATED | |
| | 30 OVER | ±0.3 | APPROVED BY Y. ITO | DATE 2003/05/07 | MATERIAL NO. SD-53314-001 | |
| REV A | DESCRIPTION | ANGULAR ±3° DRAFT WHERE APPLICABLE MUST REMAIN WITHIN DIMENSIONS | MATERIAL NO. SEE CHART | DOCUMENT NO. SD-53314-001 | SHEET NO. 1 OF 1 | |