

Excellent Integrated System Limited

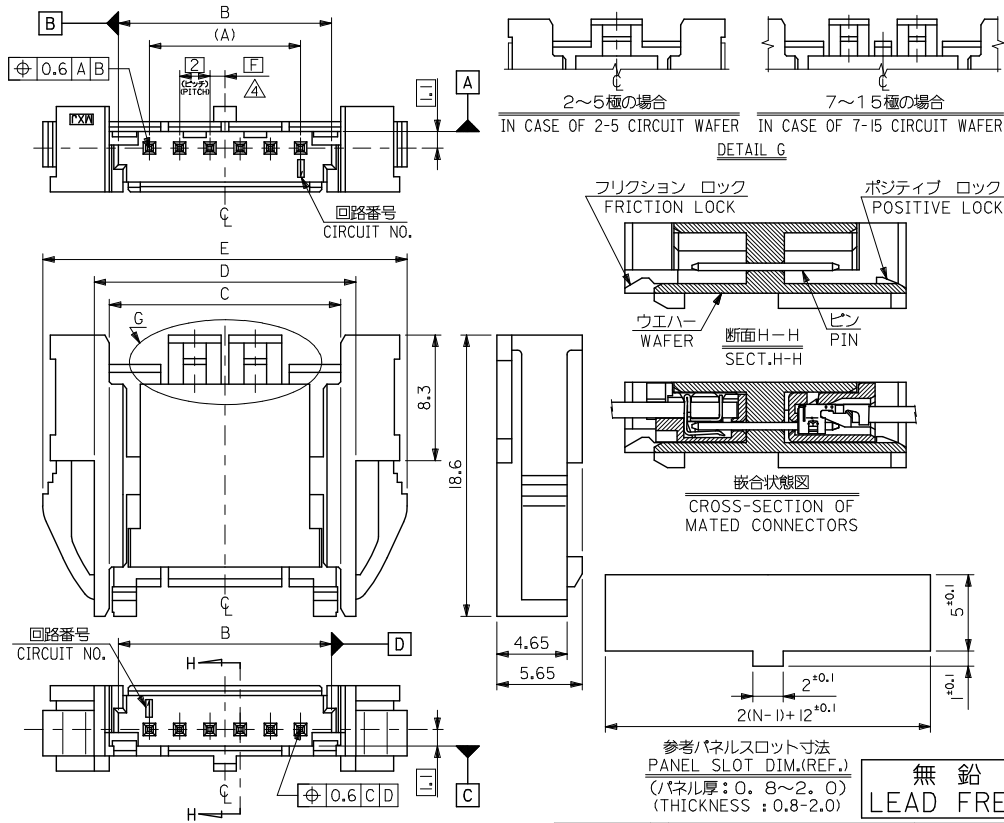
Stocking Distributor

Click to view price, real time Inventory, Delivery & Lifecycle Information:

[Molex Connector Corporation](#)
[0533580240](#)

For any questions, you can email us directly:
sales@integrated-circuit.com

10 9 8 7 6 5 4 3 2 1



注記 NOTES

- 材料 MATERIAL
 ワエハー: PBT,UL94V-0
 WAFER: PBT,UL94V-0
 PIN: 黄銅, スズメッキ (0.5)
 PIN: BRASS, TIN PLATED (0.5 SQUARE)
- 適合圧着ハウジング: 51090-***00
 MATING CRIMP RECEPTACLE HOUSING: 51090-***00
- 適合圧接ハウジング: 52484-***1*
 MATING 1DT RECEPTACLE HOUSING: 52484-***1*
- △ B寸法の中心から、隣接するピンの中心までの位置を示す。
 THIS DIMENSION SHOWS SPACING BETWEEN CENTER OF PIN AND CENTER OF B DIMENSION.
- 本図は、6種を示す。
- CIRCUIT VERSION IS SHOWN IN THIS DRAWING.
 ハウジングは、パネル打抜き側から挿入すること。
 INSERT HOUSING FROM PUNCH SIDE OF PANEL.
- 色
 53358-***40: 自然色 (WHITE)
 53358-***42: 赤色 (RED)
 53358-***43: 黄色 (YELLOW)
 53358-***44: 青色 (BLUE)

2	42.1	35.3	33.3	32.1	28	53358-154*	15
1	40.1	33.3	31.3	30.1	26	-144*	14
2	38.1	31.3	29.3	28.1	24	-134*	13
1	36.1	29.3	27.3	26.1	22	-124*	12
2	34.1	27.3	25.3	24.1	20	-114*	11
1	32.1	25.3	23.3	22.1	18	-104*	10
2	30.1	23.3	21.3	20.1	16	-094*	9
1	28.1	21.3	19.3	18.1	14	-084*	8
2	26.1	19.3	17.3	16.1	12	-074*	7
1	24.1	17.3	15.3	14.1	10	-064*	6
2	22.1	15.3	13.3	12.1	8	-054*	5
1	20.1	13.3	11.3	10.1	6	-044*	4
2	18.1	11.3	9.3	8.1	4	-034*	3
1	16.1	9.3	7.3	6.1	2	53358-024*	2
F	E	D	C	B	A	ENG. NO.	CKT.

参考パネルスロット寸法 (REF.)
 PANEL SLOT DIM. (REF.)
 (パネル厚: 0.8~2.0)
 (THICKNESS: 0.8-2.0)

無鉛 LEAD FREE

REVISED EC NO. J2015-0419 DRAWN BY: DRW/MATSUYAMA CHKD/KASUKAWA APPR./UKITA	GENERAL TOLERANCES (UNLESS SPECIFIED)		DIMENSION STYLE MM ONLY		SCALE ---	DESIGN UNITS METRIC	THIRD ANGLE PROJECTION	
	10 UNDER	± 0.2	DRAWN BY	DATE	TITLE			
	10 OVER 30 UNDER	± 0.25	SSHIBATA	2012/11/21	2.0 WIRE TO WIRE CONN. PANEL MOUNT WAFER ASSY			
	30 OVER	± 0.3	JMIYAZAWA	2012/11/21	molex			
ANGULAR ± 3 °		DRAFT WHERE APPLICABLE MUST REMAIN WITHIN DIMENSIONS		MATERIAL NO.	DOCUMENT NO.	SHEET NO.		
				SEE CHART		SD-53358-001		
				THIS DRAWING CONTAINS INFORMATION THAT IS PROPRIETARY TO MOLEX INCORPORATED AND SHOULD NOT BE USED WITHOUT WRITTEN PERMISSION				1 OF 1

9 8 7 6 5 4 3 2 1