

Excellent Integrated System Limited

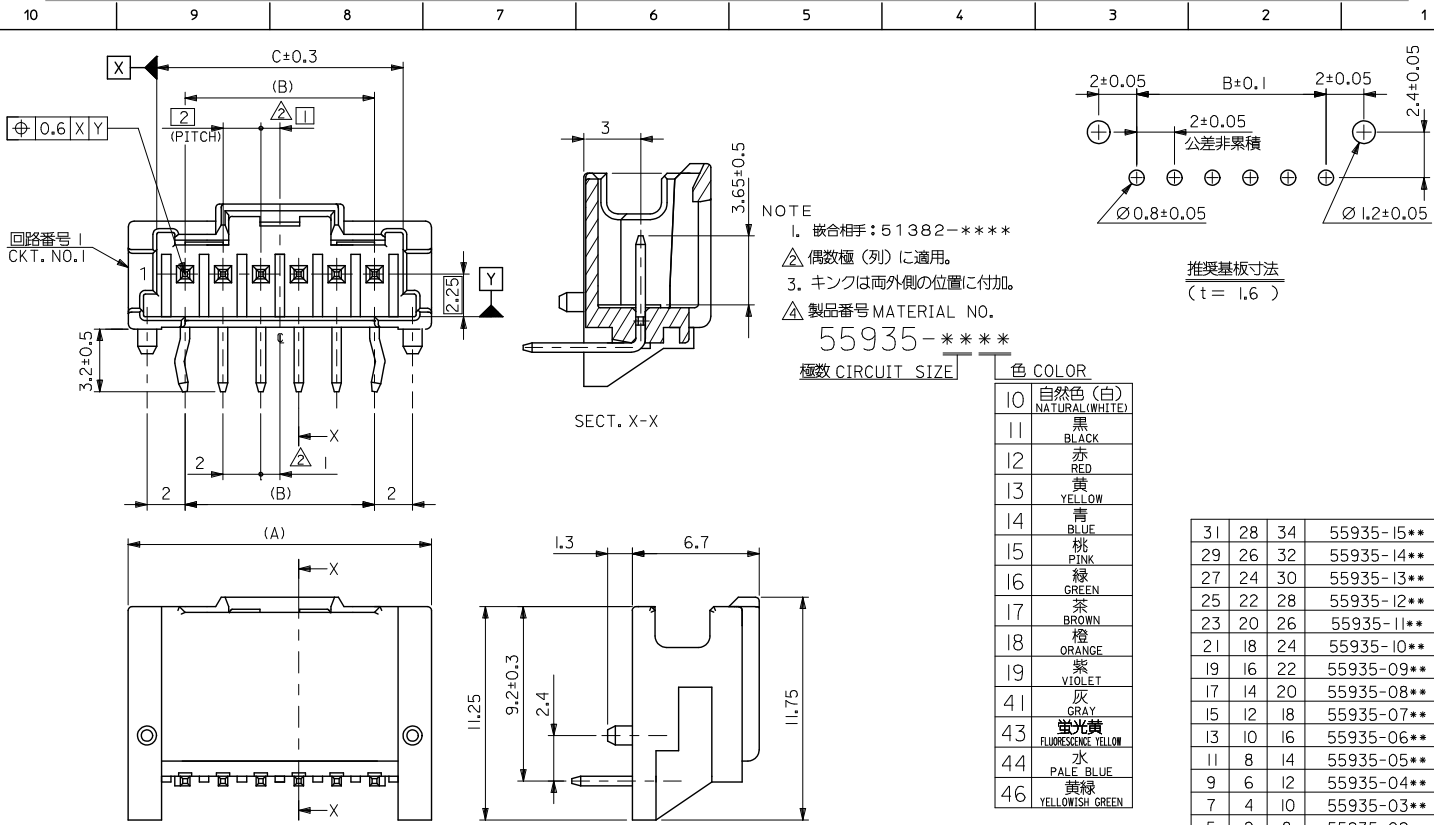
Stocking Distributor

Click to view price, real time Inventory, Delivery & Lifecycle Information:

[Molex Connector Corporation](#)
[0559351210](#)

For any questions, you can email us directly:

sales@integrated-circuit.com

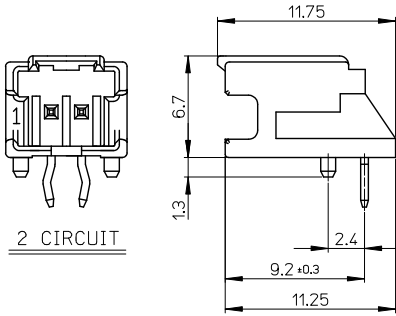
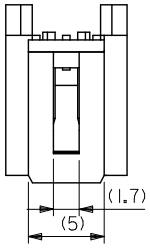


3~15極 側面図

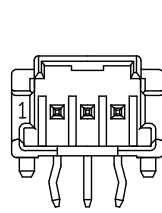
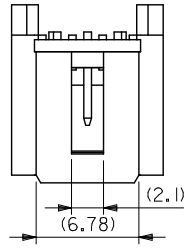
MATERIAL
ピン: 黄銅、ニッケル下地鍍メッキ
ハウジング: PBT

REVISED	EC NO. J2014-0331	2013/08/22	GENERAL TOLERANCES (UNLESS SPECIFIED)	DIMENSION STYLE	SCALE	DESIGN UNITS	THIRD ANGLE PROJECTION
	DRW: TAJI MA01	2013/08/23	10 UNDER ±0.20	MM ONLY	---	METRIC	◎ □
D	CHK: KASAKAWA	2013/08/23	10 OVER 30 UNDER ±0.25	DRAWN BY	DATE	TITLE	
	APP: NIKITA	2013/08/26	30 OVER ±0.30	T. NIITSU	'02/05/15	2.0 W/B SINGLE CONN. PLUG HOUSING ASS'Y R/A -LEAD FREE-	
REV	DESCRIPTION		ANGULAR ±3 °	CHECKED BY	DATE	DOCUMENT NO.	
			DRAFT WHERE APPLICABLE MUST REMAIN WITHIN DIMENSIONS	K. ASAKAWA	'03/06/12	SD-55935-005	
				APPROVED BY	DATE	SHEET NO.	
				T. YAMAGUCHI	'03/06/12	1 OF 2	
				MATERIAL NO.		SEE CHART	
				SIZE		THIS DRAWING CONTAINS INFORMATION THAT IS PROPRIETARY TO MOLEX INCORPORATED AND SHOULD NOT BE USED WITHOUT WRITTEN PERMISSION	

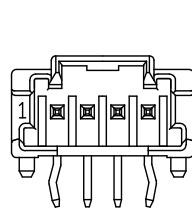
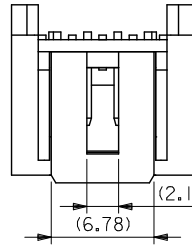
10 9 8 7 6 5 4 3 2 1



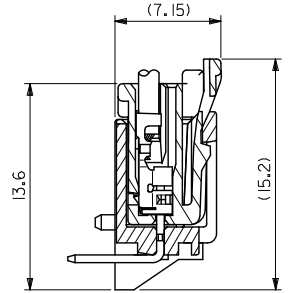
2 CIRCUIT



3 CIRCUIT



4 CIRCUIT



嵌合断面図

REVISED IEC NO. J2014-0331 DRAWN: YAJI MAO1 CHIKIDAKAWA APPROX: NIKITA 2013/08/22 2013/08/23 2013/08/26	GENERAL TOLERANCES (UNLESS SPECIFIED)		DIMENSION STYLE MM ONLY		SCALE ---	DESIGN UNITS METRIC	THIRD ANGLE PROJECTION		
	10 UNDER	± 0.20	DRAWN BY T. NIITSU		DATE '02/05/15	TITLE 2.0 W/B SINGLE CONN. PLUG HOUSING ASS'Y R/A -LEAD FREE-			
	10 OVER 30 UNDER	± 0.25	CHECKED BY K. ASAKAWA		DATE '03/06/12	molex DOCUMENT NO. SD-55935-005 SHEET NO. 2 OF 2			
	30 OVER	± 0.30	APPROVED BY T. YAMAGUCHI		DATE '03/06/12				
ANGULAR ± 3 °		DRAFT WHERE APPLICABLE MUST REMAIN WITHIN DIMENSIONS		MATERIAL NO. SEE CHART		THIS DRAWING CONTAINS INFORMATION THAT IS PROPRIETARY TO MOLEX INCORPORATED AND SHOULD NOT BE USED WITHOUT WRITTEN PERMISSION			

9 8 7 6 5 4 3 2 1