

Excellent Integrated System Limited

Stocking Distributor

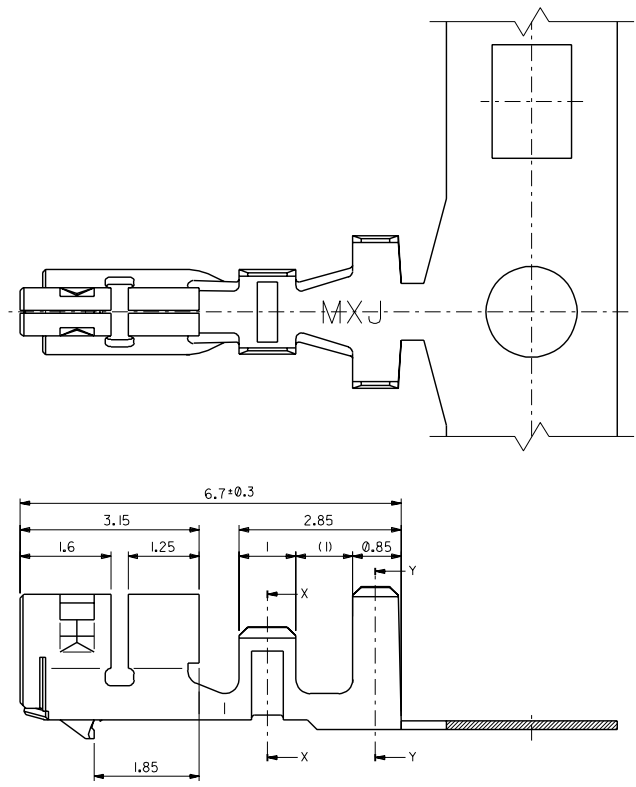
Click to view price, real time Inventory, Delivery & Lifecycle Information:

[Molex Connector Corporation](#)
[0561348100](#)

For any questions, you can email us directly:

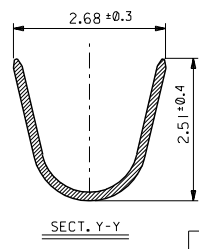
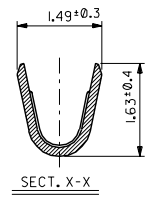
sales@integrated-circuit.com

DWG. NO. SD-56134-002



注記
NOTES

1. 使用材料 : リン青銅, 鍍メッキ (t=0.15)
MATERIAL : PRE-TINNED PHOSPHOR BRONZE (t=0.15)
2. 適合ハウジング : 51242シリーズ
APPLICABLE HOUSING : 51242 SERIES



56134-8100	バラ状 LOOSE
56134-8000	連続状 CHAIN
MATERIAL NO. 端子形状 FORM	

DO NOT SCALE DRAWING

8 83ANG. DRWN: CHK: APPR: 833NO. DRWN: CHK: APPR: 832NO. DRWN: CHK: APPR:	7 REVISED 831 NO. J2002-0125 DRWN: N.ITO CHK: K.SAKAWA APPR: T.YAMAGUCHI RELEASED 830 NO. JC2001-0805 DRWN: N.ITO CHK: T.YAMAGUCHI APPR: M.FUKUSHIMA	6 DESCRIPTION MATERIAL 材料 注記参照 SEE NOTES FINISH 仕上げ // WIRE RANGE 適用電線範囲 0.4 mm ² INS. RANGE 被覆外径 Ø 1.7MAX.	5 GENERAL TOLERANCES (UNLESS SPECIFIED) 一般公差 10 UNDER 未満 ±0.2 10 OVER 以上 30 UNDER 未満 ±0.25 30 OVER 以上 ±0.3 ANGLE 角度 ±3°	4 SCALE 15:1 DESIGN UNITS 図法単位 <input checked="" type="checkbox"/> mm <input type="checkbox"/> INCH DRAWN BY & DATE N.ITO 01/04/02 CHECKED BY & DATE K.SAKAWA 01/08/02 APPROVED BY & DATE T.YAMAGUCHI 01/08/02 CAD FILENAME 56134002.S01	3 MODEL NO. 56134-8*00 DIMENSIONS: 寸法 <input checked="" type="checkbox"/> PROJ ANGLE 投影角度 <input type="checkbox"/> mm <input type="checkbox"/> INCH <input type="checkbox"/> mm <input type="checkbox"/> mm ONLY TITLE: 2.0mm W-T-B CONN CRIMP RECEPTACLE MOLEX INCORPORATED	2 MATERIAL NO. SEE CHART DRAWING NO. SD-56134-002 SHEET NO. 1 OF 1 SIZE B EN-02J(097) MXJ-54	SHT REV 2 1 REVISE ON CAD ONLY