

Excellent Integrated System Limited

Stocking Distributor

Click to view price, real time Inventory, Delivery & Lifecycle Information:

[Molex Connector Corporation](#)
[0634453033](#)

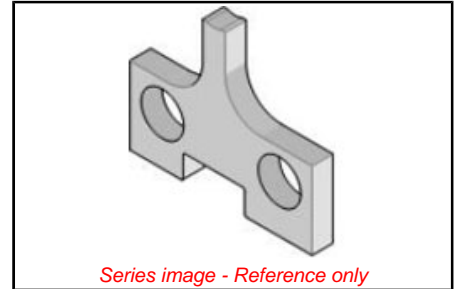
For any questions, you can email us directly:

sales@integrated-circuit.com

This document was generated on 04/06/2016

PLEASE CHECK WWW.MOLEX.COM FOR LATEST PART INFORMATION

Part Number: [0634453033](#)
Status: **Active**
Description: Insulation Anvil



Documents:
[RoHS Certificate of Compliance \(PDF\)](#)

General

Product Family	Application Tooling
Series	T9999
Comments	See Tooling Specification (PDF) Above
Function	Cutter
Geographic Area	Global
Level of Automation	Semi-Automatic
More Detailed Tech Information	applicationtooling@molex.com
Product Name	N/A
Survey	www.molex.com/review/apptool_survey.html
Tool Type	Anvil
UPC	800754884587
Warranty Disclaimer	CAUTION: Molex tooling crimp specifications are valid only when used with Molex terminals and tooling manufactured by Molex and sold by Molex or authorized distributors ("Molex Tooling"). When using tooling other than Molex Tooling with Molex specific connector systems listed in our ATS documents, the Molex tooling qualification does not apply and the responsibility for full qualification of the connector system is that of the customer. Molex accepts no liability for connector performance or tooling support where tooling other than Molex Tooling is used or where Molex Tooling is modified.

Material Info

Reference - Drawing Numbers
 Application Tooling Documents

ATS-STANDARD-PARTS

EU ELV
Not Relevant

EU RoHS **China RoHS**

Not Relevant
REACH SVHC

Not Relevant

Halogen-Free
Status

Not Relevant

Need more information on product environmental compliance?

Email productcompliance@molex.com
 Please visit the [Contact Us](#) section for any non-product compliance questions.

China ROHS
 ELV

Not Relevant
 Not Relevant

Search Parts in this Series
[T9999 Series](#)

Use With
[63852-9000](#) , [63852-9070](#) , [63862-9000](#) ,
[63862-9070](#)

This document was generated on 04/06/2016

PLEASE CHECK WWW.MOLEX.COM FOR LATEST PART INFORMATION