

## **Excellent Integrated System Limited**

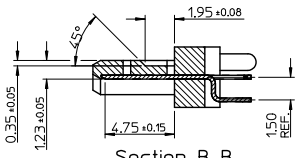
Stocking Distributor

Click to view price, real time Inventory, Delivery & Lifecycle Information:

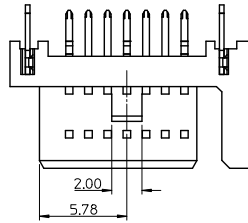
[Molex Connector Corporation](#)  
[0674911040](#)

For any questions, you can email us directly:  
[sales@integrated-circuit.com](mailto:sales@integrated-circuit.com)

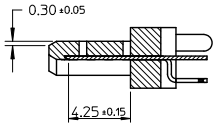
10 9 8 7 6 5 4 3 2 1



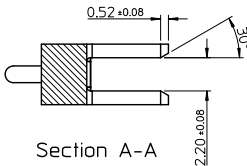
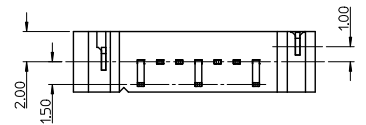
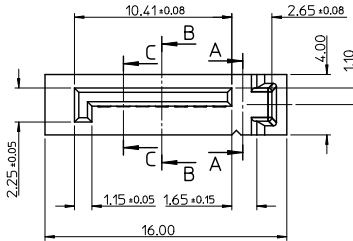
Section B-B



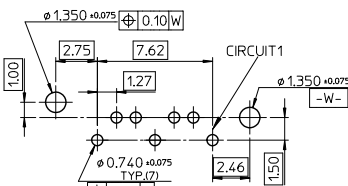
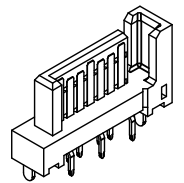
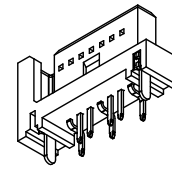
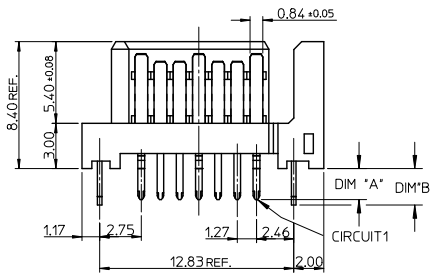
- NOTES:**
- MATERIAL:**  
HOUSING: SEE TABLE, UL94V-0, COLOR: BLACK OR BULE (SEE P/N TABLE)  
TERMINAL/PEG: COPPER ALLOY
  - TERMINAL PLATING :**  
CONTACT AREA: GOLD PLATED  
SOLDER TAIL: 1.27 MICRON MIN, TIN PLATED  
UNDER PLATE: 1.27 MICRON MIN, NICKEL PLATED
  - PEG PLATING:**  
1.27 MICRON MIN, TIN PLATED  
OVERALL: 1.27 MICRON MIN, NICKEL UNDER PLATED
  - PACKAGING SPECIFICATION REFER TO PK-67491-001**
  - PRODUCT SPECIFICATION REFER TO PS-67491-001**
  - MATING PART: 67489**
  - RECOMMENDED PROCESS: WAVE SOLDERING**
  - PRODUCT COMPLIANT TO RoHS DIRECTIVE 2002/95/EC AND ELV DIRECTIVE 2000/53/EC'**



Section C-C



Section A-A



RECOMMENDED P.C.B. LAYOUT t=1.6mm OR 2.0mm

<b>OBsolete PARTS</b> EC NO: SH2012-0231 DRAWN BY: DRWNGLLI CHKD: XQZAHNG APPR: ATIN REV:	2012/01/18 2012/01/18 2012/01/20	QUALITY SYMBOLS √=0 √=0 √=0	GENERAL TOLERANCES (UNLESS SPECIFIED) 4 PLACES ± --- ± --- 3 PLACES ± --- ± --- 2 PLACES ± 0.15 ± --- 1 PLACE ± 0.25 ± --- ANGULAR ± 3°	DIMENSION STYLE MM ONLY DRAWN BY: GLLI CHECKED BY: XQZAHNG APPROVED BY:	DATE: 2012/01/18 DATE: 2012/01/18 DATE:	SCALE: 4:1 DESIGN UNITS: METRIC TITLE: 1.27MM HIGH SPEED SERIAL PLUG VERTICAL TYPE MOLEX INCORPORATED DOCUMENT NO.: SD-67491-002 SHEET NO.: 1 OF 2	THIRD ANGLE PROJECTION
	DRAFT WHERE APPLICABLE MUST REMAIN WITHIN DIMENSIONS			MATERIAL NO.: SEE CHART IN SHEET 2	MOLEX	MOLEX INCORPORATED	SHEET NO. 1 OF 2
	THIS DRAWING CONTAINS INFORMATION THAT IS PROPRIETARY TO MOLEX INCORPORATED AND SHOULD NOT BE USED WITHOUT WRITTEN PERMISSION						
	OBSOLETE PARTS						

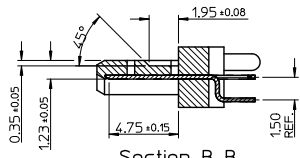
10 9 8 7 6 5 4 3 2 1

10	9	8	7	6	5	4	3	2	1
P/N	SUB-ASSEMBLY	CONTACT PLATING TYPE	DIM'A'	DIM'B'	PCB THICKNESS	COLOR	PLASTIC TYPE	SOLDER TAIL PLATING	
67491-1030	67599-0005	GOLD FLASH	2.05	2.40	1.60	BLACK	THERMAL PLASTIC	PURE TIN	
67491-1031	67599-0006	0.76 MICRON GOLD PLATED							
67491-1032	67599-0007	0.38 MICRON GOLD PLATED							
67491-1038	67599-0005	GOLD FLASH	3.00	3.20	2.40				
67491-1039	67599-0006	0.76 MICRON GOLD PLATED							
67491-1040	67599-0007	0.38 MICRON GOLD PLATED	2.05	2.40	1.60				
67491-2031	67599-0206	0.76 MICRON GOLD PLATED							
67491-2032	67599-0207	0.38 MICRON GOLD PLATED	2.35	2.40	2.00	PANTONE NO.293C ΔE<2			
67491-2035	67599-0205	GOLD FLASH							
67491-2036	67599-0206	0.76 MICRON GOLD PLATED							
67491-2037	67599-0207	0.38 MICRON GOLD PLATED	3.00	3.20	2.40				
67491-2038	67599-0205	GOLD FLASH							
67491-2039	67599-0206	0.76 MICRON GOLD PLATED							
67491-2040	67599-0207	0.38 MICRON GOLD PLATED	3.00	3.20	2.40	BLACK	HIGH TEMPERATURE THERMAL PLASTIC		
67491-1139	67599-0106	0.76 MICRON GOLD PLATED							

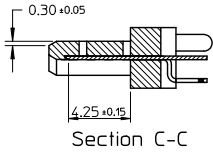
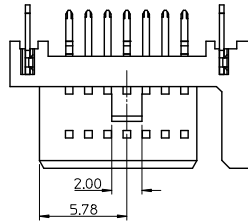


<b>OBSOLETE PARTS</b> EC NO. SH2012-0231 DRAWN BY: DRWNGLLI 2012/01/18 CHKD: XQZAHNG 2012/01/18 APPR: ATIN 2012/01/20	QUALITY SYMBOLS	GENERAL TOLERANCES (UNLESS SPECIFIED)	DIMENSION STYLE	SCALE	DESIGN UNITS	THIRD ANGLE PROJECTION
	$\nabla=0$ $\nabla=0$ $\nabla=0$	mm INCH 4 PLACES ± --- ± --- 3 PLACES ± --- ± --- 2 PLACES ± 0.15 ± --- 1 PLACE ± 0.25 ± --- ANGULAR ± 3 °	MM ONLY	4:1	METRIC	
	DESCRIPTION	DRAFT WHERE APPLICABLE MUST REMAIN WITHIN DIMENSIONS	DRAWN BY DATE	TITLE		
	REV	SEE CHART	GLLI 2012/01/18	1.27MM HIGH SPEED SERIAL PLUG VERTICAL TYPE		
		CHECKED BY DATE	MOLEX INCORPORATED			
		APPROVED BY DATE	DOCUMENT NO. SD-67491-002			
		MATERIAL NO.	SHEET NO. 2 OF 2			
		SIZE A3	THIS DRAWING CONTAINS INFORMATION THAT IS PROPRIETARY TO MOLEX INCORPORATED AND SHOULD NOT BE USED WITHOUT WRITTEN PERMISSION			

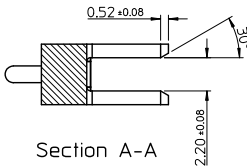
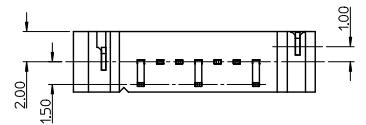
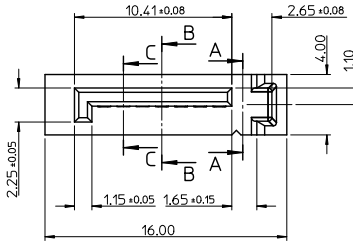
10 9 8 7 6 5 4 3 2 1



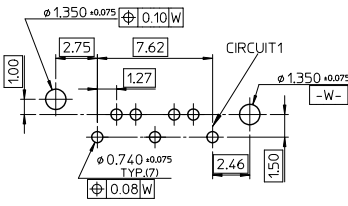
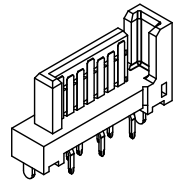
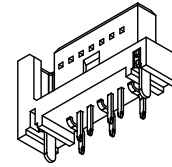
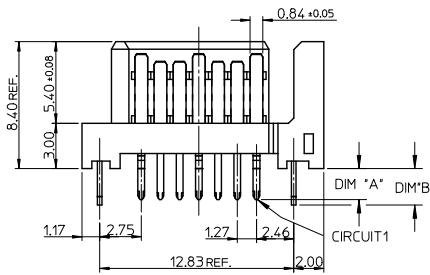
Section B-B



Section C-C



Section A-A



RECOMMENDED P.C.B. LAYOUT t=1.6mm OR 2.0mm

- NOTES:**
- MATERIAL:**  
HOUSING: SEE TABLE, UL94V-0, COLOR: BLACK OR BULE (SEE P/N TABLE)  
TERMINAL/PEG: COPPER ALLOY
  - TERMINAL PLATING :**  
CONTACT AREA: GOLD PLATED  
SOLDER TAIL: 1.27 MICRON MIN, TIN PLATED  
UNDER PLATE: 1.27 MICRON MIN, NICKEL PLATED
  - PEG PLATING:**  
1.27 MICRON MIN, TIN PLATED  
OVERALL: 1.27 MICRON MIN, NICKEL UNDER PLATED
  - PACKAGING SPECIFICATION REFER TO PK-67491-001**
  - PRODUCT SPECIFICATION REFER TO PS-67491-001**
  - MATING PART: 67489**
  - RECOMMENDED PROCESS: WAVE SOLDERING**
  - PRODUCT COMPLIANT TO RoHS DIRECTIVE 2002/95/EC AND ELV DIRECTIVE 2000/53/EC'**

<b>OBsolete PARTS</b> IEC NO: SH2011-0104 2010/10/22 DRAWN BY: GUDRWINGLI CHECKED BY: APPR: RZHANG 2010/11/03 REV:	QUALITY SYMBOLS √=0 √=0 √=0	GENERAL TOLERANCES (UNLESS SPECIFIED) <table border="1"> <thead> <tr> <th></th> <th>mm</th> <th>INCH</th> </tr> </thead> <tbody> <tr> <td>4 PLACES</td> <td>±---</td> <td>±---</td> </tr> <tr> <td>3 PLACES</td> <td>±---</td> <td>±---</td> </tr> <tr> <td>2 PLACES</td> <td>±0.15</td> <td>±---</td> </tr> <tr> <td>1 PLACE</td> <td>±0.25</td> <td>±---</td> </tr> <tr> <td colspan="3">ANGULAR ± 3°</td> </tr> </tbody> </table>		mm	INCH	4 PLACES	±---	±---	3 PLACES	±---	±---	2 PLACES	±0.15	±---	1 PLACE	±0.25	±---	ANGULAR ± 3°			DIMENSION STYLE MM ONLY DRAWN BY: RICHARD DATE: '01/06/21 CHECKED BY: VINCENT DATE: '01/06/21 APPROVED BY: RZHANG DATE: 2010/11/03	SCALE 4:1 DESIGN UNITS METRIC THIRD ANGLE PROJECTION	TITLE 1.27MM HIGH SPEED SERIAL PLUG VERTICAL TYPE MOLEX INCORPORATED DOCUMENT NO. SD-67491-002 SHEET NO. 1 OF 2
		mm	INCH																				
	4 PLACES	±---	±---																				
	3 PLACES	±---	±---																				
2 PLACES	±0.15	±---																					
1 PLACE	±0.25	±---																					
ANGULAR ± 3°																							
DRAFT WHERE APPLICABLE MUST REMAIN WITHIN DIMENSIONS	MATERIAL NO. SEE CHART IN SHEET 2	MOLEX INCORPORATED	MOLEX INCORPORATED	MOLEX INCORPORATED	MOLEX INCORPORATED																		
THIS DRAWING CONTAINS INFORMATION THAT IS PROPRIETARY TO MOLEX INCORPORATED AND SHOULD NOT BE USED WITHOUT WRITTEN PERMISSION	SIZE A3	MOLEX INCORPORATED	MOLEX INCORPORATED	MOLEX INCORPORATED	MOLEX INCORPORATED																		
OBSOLETE PARTS	QUALITY SYMBOLS	GENERAL TOLERANCES (UNLESS SPECIFIED)	DIMENSION STYLE	SCALE	TITLE																		

10 9 8 7 6 5 4 3 2 1



10	9	8	7	6	5	4	3	2	1			
P/N	CONTACT PLATING TYPE	*A*	*B*	PCB THICKNESS	SOLDERING PLATE	COLOR	PLASTIC TYPE					
67491-1030	GOLD FLASH	2.05	2.40	1.60	PURE TIN	BLACK	THERMAL PLASTIC					
67491-1031	0.76 MICRON GOLD PLATED											
67491-1032	0.38 MICRON GOLD PLATED											
67491-1035	GOLD FLASH											
67491-1036	0.76 MICRON GOLD PLATED											
67491-1037	0.38 MICRON GOLD PLATED											
67491-1038	GOLD FLASH	3.00	3.20	2.40		BLUE PENTONE NO.293C ΔE<3	THERMAL PLASTIC					
67491-1039	0.76 MICRON GOLD PLATED											
67491-1040	0.38 MICRON GOLD PLATED											
67491-2031	0.76 MICRON GOLD PLATED											
67491-2032	0.38 MICRON GOLD PLATED											
67491-2035	GOLD FLASH											
67491-2036	0.76 MICRON GOLD PLATED	2.35	2.40	2.00	BLACK	HIGH TEMPERATURE THERMAL PLASTIC						
67491-2037	0.38 MICRON GOLD PLATED											
67491-2038	GOLD FLASH											
67491-2039	0.76 MICRON GOLD PLATED											
67491-2040	0.38 MICRON GOLD PLATED											
67491-1130	GOLD FLASH											
67491-1131	0.76 MICRON GOLD PLATED	2.05	2.40	1.60					BLACK	HIGH TEMPERATURE THERMAL PLASTIC		
67491-1132	0.38 MICRON GOLD PLATED											
67491-1135	GOLD FLASH											
67491-1136	0.76 MICRON GOLD PLATED											
67491-1137	0.38 MICRON GOLD PLATED											
67491-1138	GOLD FLASH											
67491-1139	0.76 MICRON GOLD PLATED	3.00	3.20	2.40	BLACK	HIGH TEMPERATURE THERMAL PLASTIC						
67491-1140	0.38 MICRON GOLD PLATED											

<b>OBsolete PARTS</b> EC NO. SH2011-0104 2010/10/22 DRAWN BY: GDRWANGELLI CHKD: CHYK APPR: RZHANG 2010/11/03 REV:	QUALITY SYMBOLS $\nabla=0$ $\nabla=0$ $\nabla=0$	GENERAL TOLERANCES (UNLESS SPECIFIED) <table border="1"> <tr> <th></th> <th>mm</th> <th>INCH</th> </tr> <tr> <td>4 PLACES</td> <td>± ---</td> <td>± ---</td> </tr> <tr> <td>3 PLACES</td> <td>± ---</td> <td>± ---</td> </tr> <tr> <td>2 PLACES</td> <td>± 0.15</td> <td>± ---</td> </tr> <tr> <td>1 PLACE</td> <td>± 0.25</td> <td>± ---</td> </tr> <tr> <td colspan="3">ANGULAR ± 3 °</td> </tr> </table>		mm	INCH	4 PLACES	± ---	± ---	3 PLACES	± ---	± ---	2 PLACES	± 0.15	± ---	1 PLACE	± 0.25	± ---	ANGULAR ± 3 °			DIMENSION STYLE MM ONLY DRAWN BY: RICHARD DATE: '01/06/21 CHECKED BY: VINCENT DATE: '01/06/21 APPROVED BY: RZHANG DATE: 2010/11/03	SCALE: 4:1 DESIGN UNITS: METRIC THIRD ANGLE PROJECTION	TITLE: 1.27MM HIGH SPEED SERIAL PLUG VERTICAL TYPE MOLEX INCORPORATED DOCUMENT NO. SD-67491-002 SHEET NO. 2 OF 2
		mm	INCH																				
	4 PLACES	± ---	± ---																				
	3 PLACES	± ---	± ---																				
2 PLACES	± 0.15	± ---																					
1 PLACE	± 0.25	± ---																					
ANGULAR ± 3 °																							
DRAFT WHERE APPLICABLE MUST REMAIN WITHIN DIMENSIONS		SEE CHART	THIS DRAWING CONTAINS INFORMATION THAT IS PROPRIETARY TO MOLEX INCORPORATED AND SHOULD NOT BE USED WITHOUT WRITTEN PERMISSION																				
		SIZE: A3																					