

## Excellent Integrated System Limited

Stocking Distributor

Click to view price, real time Inventory, Delivery & Lifecycle Information:

[Molex Connector Corporation](#)  
[0731740330](#)

For any questions, you can email us directly:

[sales@integrated-circuit.com](mailto:sales@integrated-circuit.com)

12 11 10 9 8 7 6 5 4 3 2 73174

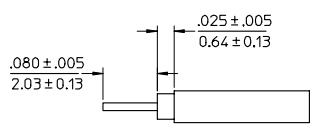
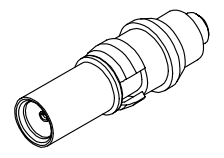
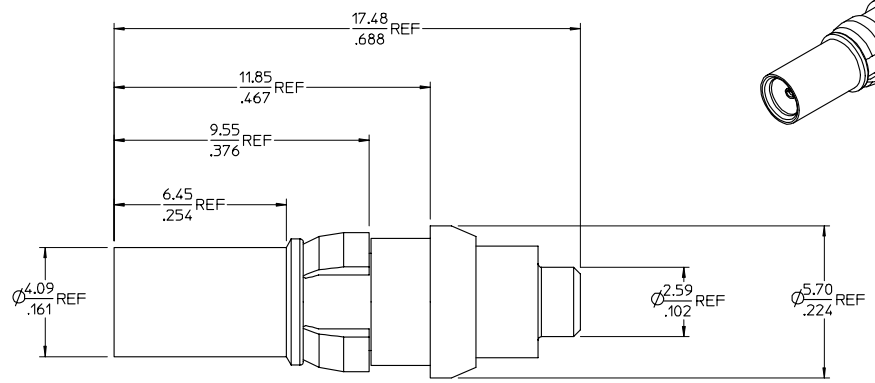
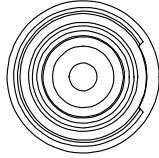
J MATERIALS AND FINISHES J

I BODY: BRASS  
PLATED: GOLD (10 MICROINCHES MIN)

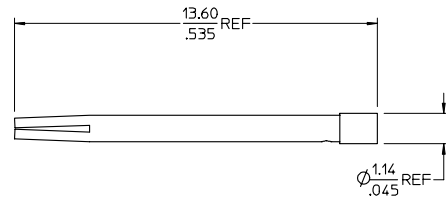
H CONTACT: BeCu  
PLATED: GOLD (10 MICROINCHES MIN)

G RETAINING RING: BeCu  
PLATED: NICKEL (100 MICROINCHES MIN)

F INSULATOR: TEFLON



RECOMMENDED STRIP DIMENSIONS



- UNLESS OTHERWISE SPECIFIED DIMS ARE INCHES AND ANGLES ARE DEGREES.
- ALL OVER.
  - NO CHATTER OR NON-UNIFORM
  - SURFACE FINISH ALLOWED.
  - PARTS TO BE FREE OF BURRS & SHARP EDGES 0.13(0.005) MAX BREAK.
  - EXTERNAL THREADS TO BE ROLLED OR SINGLE POINT.
  - DIAMETERS TO BE CONCENTRIC WITHIN 0.08(.003) TIR.

PART # 73174-0330

SPECIFICATION		DESCRIPTION	
CHG: 13.60 REF WAS 13.34 REF UPDATED DEPICTION OF CONTACT. TITLE WAS DIN 41626. REMOVED DIN SPECIFICATION. BODY PLATING WAS 1 MICRONS MIN	EC NO. JURE-2096 2004/01/15 DRWN: SSS 04/15/04 APPR: JW 04/15/04 CHG: NEW RELEASE CHANGED ALL DIMS FROM IN/MM TO MM/IN ADDED PLATING THICKNESSES	CHG: UPDATED DEPICTION OF BODY AND CONTACT	DRWN: SSS 02/10/04
EC NO. JURE-2092 DRWN: TEF 04/05/04 CHG: SSS 04/05/04 APPR: OHL 04/05/04	CHG: UPDATED DEPICTION OF CONTACT. .080-.005 WAS .045x.005	CHG: ADDED STRIP DIMENSIONS	DRWN: SSS 02/26/04
EC NO. JURE-2096 2004/01/15 DRWN: SSS 04/15/04 APPR: JW 04/15/04 CHG: NEW RELEASE CHANGED ALL DIMS FROM IN/MM TO MM/IN ADDED PLATING THICKNESSES	EC NO. JURE-2092 DRWN: TEF 04/05/04 CHG: SSS 04/05/04 APPR: OHL 04/05/04	CHG: UPDATED DEPICTION OF BODY AND CONTACT	DRWN: SSS 02/10/04
CHG: 13.60 REF WAS 13.34 REF UPDATED DEPICTION OF CONTACT. TITLE WAS DIN 41626. REMOVED DIN SPECIFICATION. BODY PLATING WAS 1 MICRONS MIN	EC NO. JURE-2096 2004/01/15 DRWN: SSS 04/15/04 APPR: JW 04/15/04 CHG: NEW RELEASE CHANGED ALL DIMS FROM IN/MM TO MM/IN ADDED PLATING THICKNESSES	CHG: UPDATED DEPICTION OF BODY AND CONTACT	DRWN: SSS 02/10/04

ib_frame_C-B1 rev. B1 2000/08/01	11	10	9	8	7	6	5	4	3	2	1
-------------------------------------	----	----	---	---	---	---	---	---	---	---	---

QUALITY SYMBOLS	GENERAL TOLERANCES (UNLESS SPECIFIED)	SCALE	DESIGN UNITS	THIRD ANGLE PROJECTION	REVISE ON CAD ONLY
▽ 0	4 PLACES ± --- ± --- 3 PLACES ± --- ± --- 2 PLACES ± --- ± --- 1 PLACE ± --- ± ---	INCH IN/MM	INCH	DIN 41626 JACK 50 OHM SR .047 CABLE DIN-JC	
▽ 0	ANGULAR ± 1/2°	DRAWN BY	DATE	CHECKED BY	DATE
	DRAFT WHERE APPLICABLE	TEF	2004/01/15	TEF	2004/01/15
	MUST REMAIN WITHIN DIMENSIONS	APPROVED BY	DATE	MATERIAL NO.	DOCUMENT NO.
		JDW	2003/12/04	SD-73174-033	SD-73174-033
					SHEET NO. 1 OF 1
				THIS DRAWING CONTAINS INFORMATION THAT IS PROPRIETARY TO MOLEX INCORPORATED AND SHOULD NOT BE USED WITHOUT WRITTEN PERMISSION	