

Excellent Integrated System Limited

Stocking Distributor

Click to view price, real time Inventory, Delivery & Lifecycle Information:

[Molex Connector Corporation](#)
[0732510830](#)

For any questions, you can email us directly:

sales@integrated-circuit.com

MATERIALS AND FINISHES

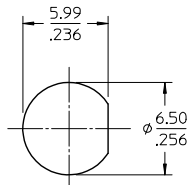
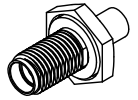
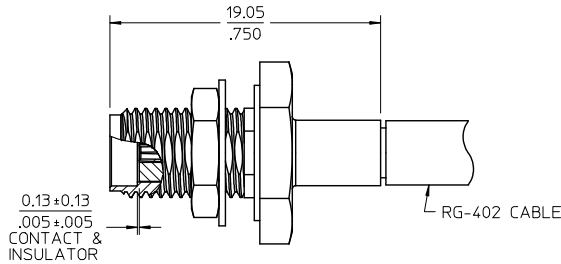
BODY, JAM NUT: BRASS
PLATED GOLD

CENTER CONTACT: BERYLLIUM COPPER
PLATED GOLD

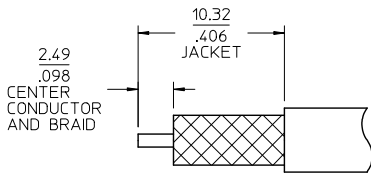
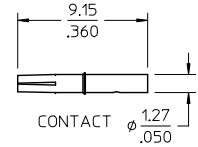
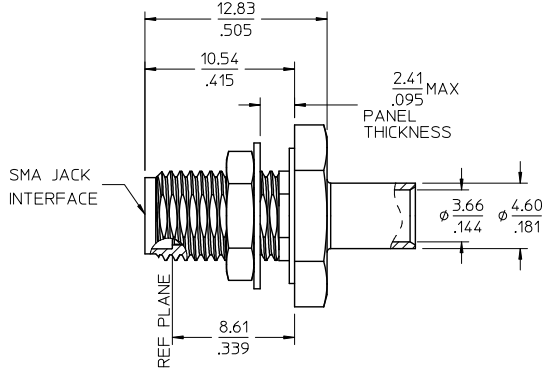
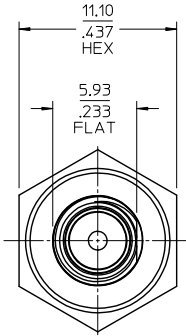
INSULATOR: TEFLON

LOCKWASHER PHOSPHOR BRONZE
PLATED GOLD

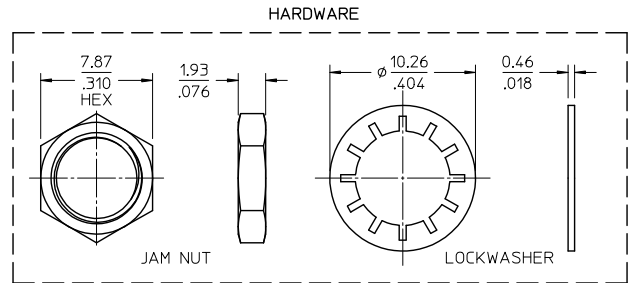
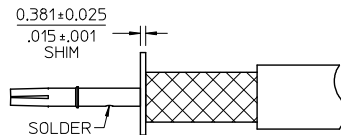
GASKET SILICONE RUBBER



RECOMMENDED MOUNTING HOLE



RECOMMENDED CABLE STRIP DIMENSION



73251-0833	GOLD FLASH	INCLUDED	TRAY
73251-0832	GOLD	INCLUDED	ONE PER BAG
73251-0831	GOLD	NOT INCLUDED	TRAY
73251-0830	GOLD	INCLUDED	TRAY
PART NO.	BODY/JAM NUT	HARDWARE/GASKET	PACKAGING

CHG:ADDED -0833 PER PDR15112112 EC NO: URF-2016-0419 DRAWN BY: CHEN CHKD: APPR: Y. CHENG 2015/12/04 DESCRIPTION:	QUALITY SYMBOLS	GENERAL TOLERANCES (UNLESS SPECIFIED)	DIMENSION STYLE	SCALE	DESIGN UNITS	THIRD ANGLE PROJECTION
	∇=0 ∇=0 ∇=0	mm INCH 4 PLACES ± --- ± --- 3 PLACES ± --- ± --- 2 PLACES ± --- ± --- 1 PLACE ± --- ± --- 0 PLACE ± --- ± ---	MM/IN	5:1	METRIC	DRAWN BY: TEF DATE: 2002/03/07 CHECKED BY: SSS DATE: 2002/03/07 APPROVED BY: GMH DATE: 2002/03/07
	ANGULAR ± 2°	DRAFT WHERE APPLICABLE MUST REMAIN WITHIN DIMENSIONS	SEE TABLE	MATERIAL NO.	DOCUMENT NO.	SHEET NO.
						1 OF 1

SMA JACK, BULKHEAD FOR
RG402 CABLE, EWR-3363
SMA-JC



SD-73251-083