

## Excellent Integrated System Limited

Stocking Distributor

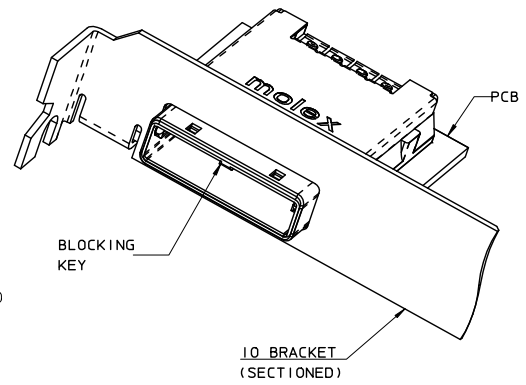
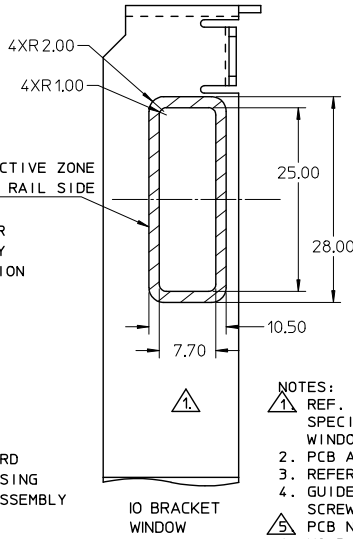
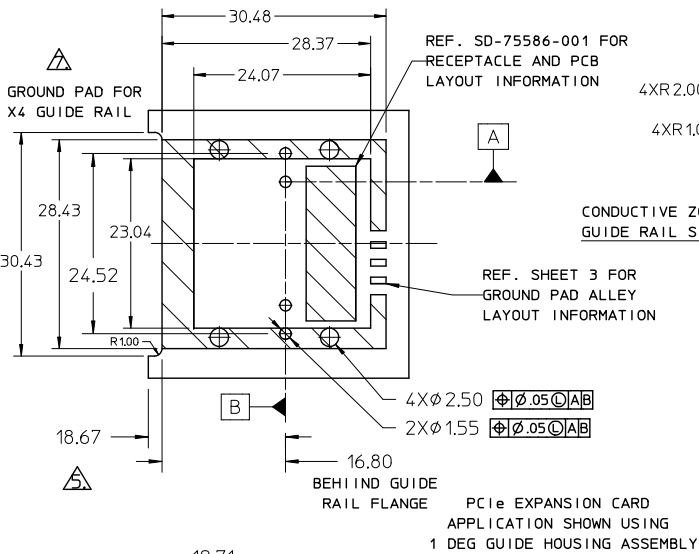
Click to view price, real time Inventory, Delivery & Lifecycle Information:

[Molex Connector Corporation](#)  
[0745400501](#)

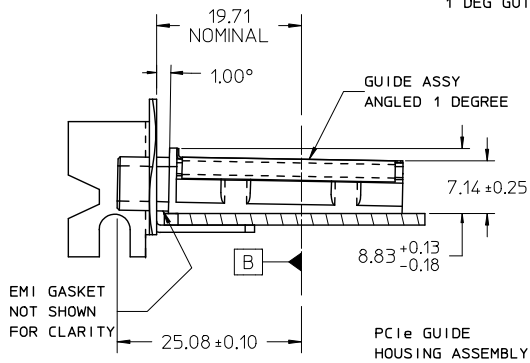
For any questions, you can email us directly:

[sales@integrated-circuit.com](mailto:sales@integrated-circuit.com)

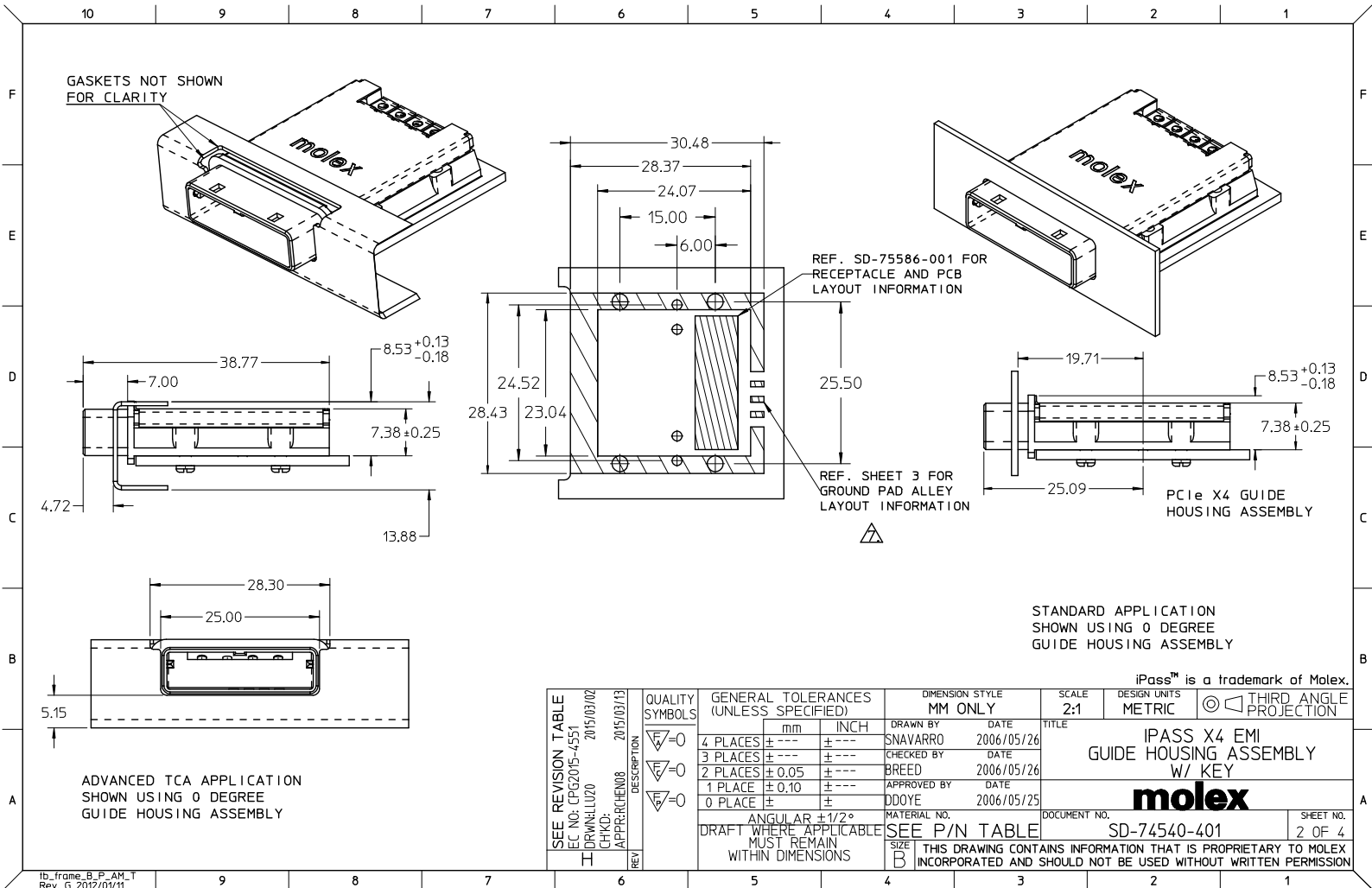
MM 3D MODEL:TM-74540-0401



- NOTES:
- REF. PCI EXPRESS CARD ELECTROMECHANICAL SPECIFICATION, REV 1.0a FOR IO BRACKET WINDOW LOCATION.
  - PCB AND IO BRACKET SHOWN FOR REFERENCE ONLY.
  - REFER TO SHEET 2 FOR ATCA GUIDE HOUSING ASSEMBLY.
  - GUIDE HOUSING MOUNTING THREAD- M2 X 0.4. SEE SHEET 3 FOR SCREW LENGTH + TORQUE.
  - PCB NOTCH IS SHOWN FOR PCI COMPLIANT BOARD.
  - NO RoHS EXEMPTIONS
  - PLATE GROUND PAD WITH EMERSION SILVER OR GOLD.
  - MATES WITH MOLEX 4X CABLE SERIES 74546-040X.
  - GUIDE HOUSING PEGS FOR ALIGNMENT ONLY. DO NOT SOLDER.



|   |  |                                       |               |                 |   |  |              |                        |
|---|--|---------------------------------------|---------------|-----------------|---|--|--------------|------------------------|
| <b>SEE REVISION TABLE</b><br>EC NO: CPG2015-4551<br>DRAWN BY: DRINKILLI020<br>CHECKED: CHIKO<br>APPROVED: APPRECHEN08<br>DATE: 2015/03/02<br>DATE: 2015/03/13 | QUALITY SYMBOLS                                      | GENERAL TOLERANCES (UNLESS SPECIFIED) |               | DIMENSION STYLE |   | SCALE                                      | DESIGN UNITS | THIRD ANGLE PROJECTION |
|   |  | mm                                    | INCH          | MM ONLY         |   | 2:1  | METRIC       |                        |
|   | $\nabla=0$   | 4 PLACES ±                            | ±             | DRAWN BY        | DATE  | TITLE                                      |              |                        |
|   | $\nabla=0$   | 3 PLACES ±                            | ±             | SNABARRO        | 2006/05/26  | IPASS X4 EMI GUIDE HOUSING ASSEMBLY W/ KEY |              |                        |
| $\nabla=0$  | 2 PLACES ±   | ±                                     | CHECKED BY    | DATE            | DOCUMENT NO.  |  |              |                        |
|   | 1 PLACE ±  | ±                                     | BREED         | 2006/05/26      | SD-74540-401  |  |              |                        |
|   | 0 PLACE ±  | ±                                     | APPROVED BY   | DATE            | SHEET NO.   |  |              |                        |
|   |  |                                       | DDOYE         | 2006/05/25      | 1 OF 4  |  |              |                        |
|   | ANGULAR ±1/2°  |                                       | MATERIAL NO.  |                 | THIS DRAWING CONTAINS INFORMATION THAT IS PROPRIETARY TO MOLEX INCORPORATED AND SHOULD NOT BE USED WITHOUT WRITTEN PERMISSION |  |              |                        |
|   | DRAFT WHERE APPLICABLE MUST REMAIN WITHIN DIMENSIONS |                                       | SEE P/N TABLE |                 |   |  |              |                        |



STANDARD APPLICATION  
SHOWN USING 0 DEGREE  
GUIDE HOUSING ASSEMBLY

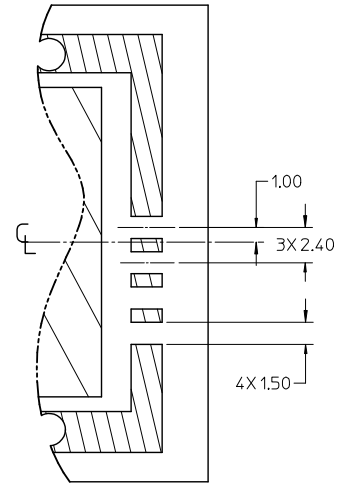
iPass™ is a trademark of Molex.

| <b>SEE REVISION TABLE</b><br>EC NO: CP62015-4551<br>DRW: LUCO<br>CHKD: APPR: CHEN08<br>REV:           | QUALITY SYMBOLS<br>$\nabla=0$<br>$\nabla=0$<br>$\nabla=0$ | GENERAL TOLERANCES (UNLESS SPECIFIED)<br><table border="1"> <thead> <tr> <th></th> <th>mm</th> <th>INCH</th> </tr> </thead> <tbody> <tr> <td>4 PLACES</td> <td>± .10</td> <td>± .004</td> </tr> <tr> <td>3 PLACES</td> <td>± .15</td> <td>± .005</td> </tr> <tr> <td>2 PLACES</td> <td>± 0.05</td> <td>± .002</td> </tr> <tr> <td>1 PLACE</td> <td>± 0.10</td> <td>± .004</td> </tr> <tr> <td>0 PLACE</td> <td>± .15</td> <td>± .005</td> </tr> </tbody> </table> |                                     | mm                         | INCH | 4 PLACES | ± .10 | ± .004 | 3 PLACES | ± .15 | ± .005 | 2 PLACES | ± 0.05 | ± .002 | 1 PLACE | ± 0.10 | ± .004 | 0 PLACE | ± .15 | ± .005 | DIMENSION STYLE<br><b>MM ONLY</b> | SCALE<br><b>2:1</b> | DESIGN UNITS<br><b>METRIC</b> | THIRD ANGLE PROJECTION |
|---|---|---|-------------------------------------|----------------------------|------|----------|-------|--------|----------|-------|--------|----------|--------|--------|---------|--------|--------|---------|-------|--------|-----------------------------------|---------------------|-------------------------------|------------------------|
|   |   | mm  | INCH                                |                            |      |          |       |        |          |       |        |          |        |        |         |        |        |         |       |        |                                   |                     |                               |                        |
|   | 4 PLACES  | ± .10   | ± .004                              |                            |      |          |       |        |          |       |        |          |        |        |         |        |        |         |       |        |                                   |                     |                               |                        |
|   | 3 PLACES  | ± .15   | ± .005                              |                            |      |          |       |        |          |       |        |          |        |        |         |        |        |         |       |        |                                   |                     |                               |                        |
| 2 PLACES  | ± 0.05  | ± .002  |                                     |                            |      |          |       |        |          |       |        |          |        |        |         |        |        |         |       |        |                                   |                     |                               |                        |
| 1 PLACE   | ± 0.10  | ± .004  |                                     |                            |      |          |       |        |          |       |        |          |        |        |         |        |        |         |       |        |                                   |                     |                               |                        |
| 0 PLACE   | ± .15   | ± .005  |                                     |                            |      |          |       |        |          |       |        |          |        |        |         |        |        |         |       |        |                                   |                     |                               |                        |
| DRAWN BY: SNAVARRO<br>CHECKED BY: BREED<br>APPROVED BY: DDOYE<br>MATERIAL NO.<br><b>SEE P/N TABLE</b> | DATE: 2006/05/26<br>DATE: 2006/05/26<br>DATE: 2006/05/25  | TITLE<br><b>IPASS X4 EMI<br/>GUIDE HOUSING ASSEMBLY<br/>W/ KEY</b>  | DOCUMENT NO.<br><b>SD-74540-401</b> | SHEET NO.<br><b>2 OF 4</b> |      |          |       |        |          |       |        |          |        |        |         |        |        |         |       |        |                                   |                     |                               |                        |
| ANGLE: ±1/2°<br>DRAFT WHERE APPLICABLE<br>MUST REMAIN WITHIN DIMENSIONS                               |   | THIS DRAWING CONTAINS INFORMATION THAT IS PROPRIETARY TO MOLEX<br>INCORPORATED AND SHOULD NOT BE USED WITHOUT WRITTEN PERMISSION  |                                     |                            |      |          |       |        |          |       |        |          |        |        |         |        |        |         |       |        |                                   |                     |                               |                        |

10 9 8 7 6 5 4 3 2 1

| P/N       | DESCRIPTION   | GEN  | ELASTOMERIC GASKET<br>FLAMMABILITY RATING |
|-----------|---|------|---|
| 745400401 | 4X EMI GUIDE HOUSING ASSEMBLY - PCIE / 1 DEG                    | GEN1 |   |
| 745400406 | 4X EMI GUIDE HOUSING ASSEMBLY - PCIE / 1 DEG                    | GEN1 | EQUATE TO UL94 V-0                        |
| 745400501 | 4X EMI GUIDE HOUSING ASSEMBLY - ATCA / 0 DEG                    | GEN1 |   |
| 745400407 | 4X EMI GUIDE HOUSING ASSEMBLY - PCIE / 1 DEG<br>WITH 5MM SCREWS | GEN1 |   |

| PCB THICKNESS | SCREW LENGTH | TORQUE(IN LBS) |
|---------------|--------------|----------------|
| 1.6           | 5MM          | 2.3            |
| 2.38          | 6MM          | 2.3            |
| 3.2           | 6MM          | 2.3            |
| X             | +4MM MAX     | 2.3            |



PARTIAL1  
SCALE 4:1  
GROUND PAD ALLEY  
LAYOUT INFORMATION



|  |                                      |  |   |                            |                    |   |                        |                              |                     |
|--|--------------------------------------|--|---|----------------------------|--------------------|---|------------------------|------------------------------|---------------------|
| SEE REVISION TABLE<br>EC NO: CP62015-4551<br>DRAWN: LUD0<br>CHKD: APPR: RCHEN08<br>2015/03/02<br>2015/03/13                      | QUALITY SYMBOLS<br>√=0<br>√=0<br>√=0 | GENERAL TOLERANCES (UNLESS SPECIFIED)  |   | DIMENSION STYLE<br>MM ONLY |                    | SCALE<br>1:1  | DESIGN UNITS<br>METRIC | THIRD ANGLE PROJECTION       |                     |
|  |                                      | 4 PLACES ± --- ± ---<br>3 PLACES ± --- ± ---<br>2 PLACES ± 0.05 ± ---<br>1 PLACE ± 0.10 ± ---<br>0 PLACE ± ± | mm INCH<br>± --- ± ---<br>± --- ± ---<br>± --- ± ---<br>± --- ± --- | DRAWN BY<br>SNAVARRO       | DATE<br>2006/05/26 | TITLE<br>IPASS X4 EMI<br>GUIDE HOUSING ASSEMBLY<br>W/ KEY |                        |                              |                     |
| ANGULAR ±1/2°<br>DRAFT WHERE APPLICABLE<br>MUST REMAIN<br>WITHIN DIMENSIONS  |                                      | APPROVED BY<br>DDOYE   |   | DATE<br>2006/05/25         |                    | MATERIAL NO.<br>SEE P/N TABLE                             |                        | DOCUMENT NO.<br>SD-74540-401 | SHEET NO.<br>3 OF 4 |
| THIS DRAWING CONTAINS INFORMATION THAT IS PROPRIETARY TO MOLEX<br>INCORPORATED AND SHOULD NOT BE USED WITHOUT WRITTEN PERMISSION |                                      |  |   |                            |                    |   |                        |                              |                     |

9 8 7 6 5 4 3 2 1



10 9 8 7 6 5 4 3 2 1

REVISION TABLE

| DATE       | REV | DESCRIPTION   |
|------------|-----|---|
| 2014/05/09 | G   | 1. ADDED *MM 3D MODEL: TM-74540-0401* ON LEFT TOP CORNER [SHT 1]<br>2. REVISED NOTE 6. FROM *THIS PRODUCT MEETS THE RESTRICTION OF HAZARDOUS SUBSTANCES IN ELECTRICAL AND ELECTRONIC EQUIPMENT (RoHS) DIRECTIVE (2002/95/EC)* TO *NO RoHS EXEMPTIONS* [SHT 1]<br>3. ADDED P/N 745400406 [SHT 3] |
| 2015/03/02 | H   | 1. ADDED P/N 745400407. [SHT 3]   |
|            |     |   |
|            |     |   |
|            |     |   |
|            |     |   |
|            |     |   |
|            |     |   |
|            |     |   |
|            |     |   |
|            |     |   |
|            |     |   |
|            |     |   |
|            |     |   |
|            |     |   |
|            |     |   |
|            |     |   |

|  |                 |  |           |                            |            |            |   |                           |  |
|--|-----------------|--|-----------|----------------------------|------------|------------|---|---------------------------|--|
| SEE REVISION TABLE<br>EC NO: CP62015-4551<br>DRAWN BY: DRWELLU20<br>CHKD: APPR:RCHEN08<br>DATE: 2015/03/02<br>DATE: 2015/03/13 | QUALITY SYMBOLS | GENERAL TOLERANCES (UNLESS SPECIFIED)  |           | DIMENSION STYLE<br>MM ONLY |            | SCALE      | DESIGN UNITS<br>METRIC  | THIRD ANGLE<br>PROJECTION |  |
|  | $\nabla=0$      | 4 PLACES   | $\pm$ --- | $\pm$ ---                  | DRAWN BY   | DATE       | TITLE<br>IPASS X4 EMI<br>GUIDE HOUSING ASSEMBLY<br>W/ KEY<br>               |                           |  |
|  | $\nabla=0$      | 3 PLACES   | $\pm$ --- | $\pm$ ---                  | CHECKED BY | DATE       |   |                           |  |
| $\nabla=0$   | 2 PLACES        | $\pm$ 0.05   | $\pm$ --- | BREED                      | 2006/05/26 |            |   |                           |  |
| $\nabla=0$   | 1 PLACE         | $\pm$ 0.10   | $\pm$ --- | APPROVED BY                | DATE       |            |   |                           |  |
|  |                 | 0 PLACE  | $\pm$     | $\pm$                      | DDOYE      | 2006/05/25 | MATERIAL NO. SEE P/N TABLE<br>DOCUMENT NO. SD-74540-401<br>SHEET NO. 4 OF 4 |                           |  |
| ANGULAR $\pm 1/2^\circ$<br>DRAFT WHERE APPLICABLE<br>MUST REMAIN<br>WITHIN DIMENSIONS  |                 | THIS DRAWING CONTAINS INFORMATION THAT IS PROPRIETARY TO MOLEX<br>INCORPORATED AND SHOULD NOT BE USED WITHOUT WRITTEN PERMISSION |           |                            |            |            |   |                           |  |

9 8 7 6 5 4 3 2 1