



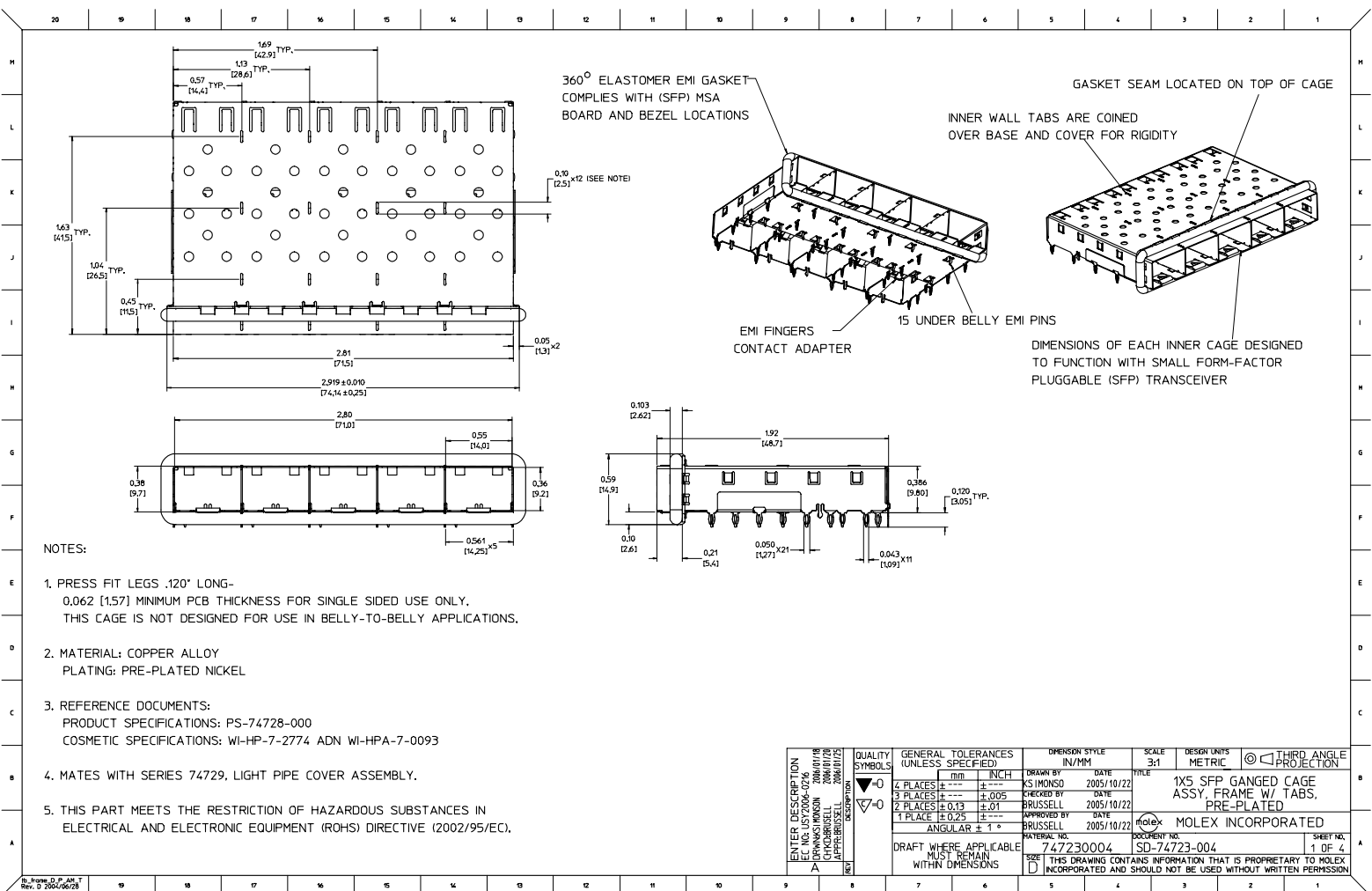
Excellent Integrated System Limited

Stocking Distributor

Click to view price, real time Inventory, Delivery & Lifecycle Information:

[Molex Connector Corporation](#)
[0747230004](#)

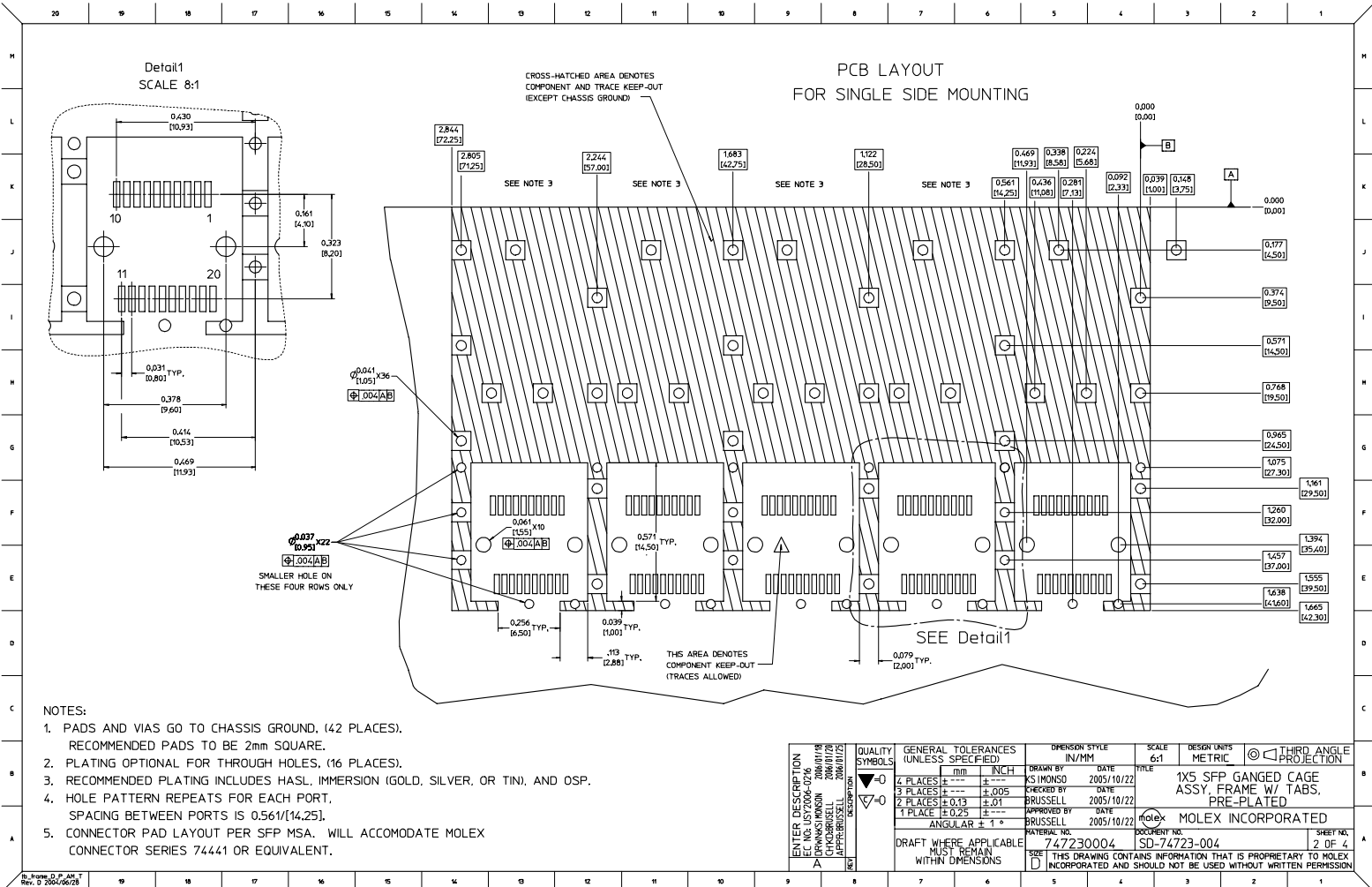
For any questions, you can email us directly:
sales@integrated-circuit.com



NOTES:

1. PRESS FIT LEGS .120" LONG-
0.062 [1.57] MINIMUM PCB THICKNESS FOR SINGLE SIDED USE ONLY.
THIS CAGE IS NOT DESIGNED FOR USE IN BELLY-TO-BELLY APPLICATIONS.
2. MATERIAL: COPPER ALLOY
PLATING: PRE-PLATED NICKEL
3. REFERENCE DOCUMENTS:
PRODUCT SPECIFICATIONS: PS-74728-000
COSMETIC SPECIFICATIONS: WI-HP-7-2774 ADN WI-HPA-7-0093
4. MATES WITH SERIES 74729, LIGHT PIPE COVER ASSEMBLY.
5. THIS PART MEETS THE RESTRICTION OF HAZARDOUS SUBSTANCES IN ELECTRICAL AND ELECTRONIC EQUIPMENT (ROHS) DIRECTIVE (2002/95/EC).

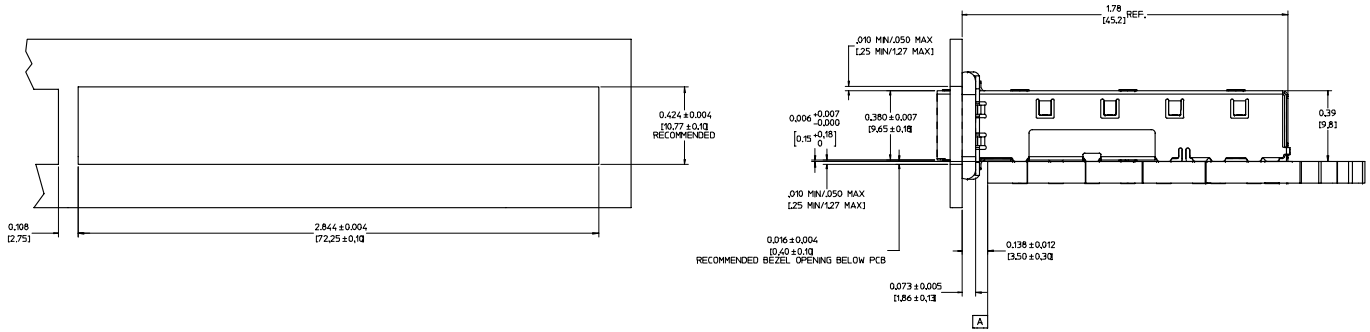
ENTER DESCRIPTION ELEC. NO. 0747230004 DRAWN BY: XS MONSO CHECKED BY: DAVID APPROVED BY: BRUSSELL DATE: 2005/10/22	QUALITY SYMBOLS ▽=0 ▽=0	GENERAL TOLERANCES (UNLESS SPECIFIED)		DIMENSION STYLE: IN/MM	SCALE: 3:1	DESIGN UNITS: METRIC	THIRD ANGLE PROJECTION		
		4 PLACES ± .005 ± .005	3 PLACES ± .005 ± .005	2 PLACES ± 0.13 ± .01	1 PLACE ± 0.25 ± .01	DRAWN BY: XS MONSO DATE: 2005/10/22	CHECKED BY: DAVID DATE: 2005/10/22	APPROVED BY: BRUSSELL DATE: 2005/10/22	TITLE: 1X5 SFP GANGED CAGE ASSY, FRAME W/ TABS, PRE-PLATED
		DRAFT WHERE APPLICABLE MUST REMAIN WITHIN DIMENSIONS		MATERIAL NO.: 747230004	DOCUMENT NO.: SD-74723-004	MOLEX INCORPORATED		SHEET NO.: 1 OF 4	
		SET THIS DRAWING CONTAINS INFORMATION THAT IS PROPRIETARY TO MOLEX INCORPORATED AND SHOULD NOT BE USED WITHOUT WRITTEN PERMISSION							



- NOTES:
- PADS AND VIAS GO TO CHASSIS GROUND, (42 PLACES).
RECOMMENDED PADS TO BE 2mm SQUARE.
 - PLATING OPTIONAL FOR THROUGH HOLES, (16 PLACES).
 - RECOMMENDED PLATING INCLUDES HASL, IMMERSION (GOLD, SILVER, OR TIN), AND OSP.
 - HOLE PATTERN REPEATS FOR EACH PORT.
SPACING BETWEEN PORTS IS 0.561/[14.25].
 - CONNECTOR PAD LAYOUT PER SFP MSA. WILL ACCOMMODATE MOLEX CONNECTOR SERIES 74441 OR EQUIVALENT.



ENTER DESCRIPTION E.C. NO. USY2006-0246 DRAWN BY CHECKED BY APPROVED BY DATE	QUALITY SYMBOLS ▽=0 ▽=0	GENERAL TOLERANCES (UNLESS SPECIFIED)		DIMENSION STYLE IN/MM	SCALE 6:1	DESIGN UNITS METRIC	THIRD ANGLE PROJECTION
		4 PLACES ± 0.13 3 PLACES ± 0.05 2 PLACES ± 0.01 1 PLACE ± 0.25 ANGULAR ± 1°	4 PLACES ± 0.005 3 PLACES ± 0.005 2 PLACES ± 0.01 1 PLACE ± 0.25 ANGULAR ± 1°	DRAWN BY KS INONSO	DATE 2005/10/22	CHECKED BY BRUSSELL	DATE 2005/10/22
DRAFT WHERE APPLICABLE MUST REMAIN WITHIN DIMENSIONS		MATERIAL NO. 747230004		DOCUMENT NO. SD-74723-004		SHEET NO. 2 OF 4	
SET THIS DRAWING CONTAINS INFORMATION THAT IS PROPRIETARY TO MOLEX INCORPORATED AND SHOULD NOT BE USED WITHOUT WRITTEN PERMISSION							

BEZEL AND BOARD POSITION DIMENSIONS FOR SINGLE SIDE MOUNTING



ENTER DESCRIPTION ELEC. NO. UST2006-0246 DRAWN BY MONSON 2005/10/22 CHECKED BY DAYE 2005/10/22 APPROVED BY BRUSSELL 2005/10/22	QUALITY SYMBOLS ▽=0 ▽=0	GENERAL TOLERANCES (UNLESS SPECIFIED)		DIMENSION STYLE IN/MM	SCALE 4:1	DESIGN UNITS METRIC	THIRDO ANGLE PROJECTION
		4 PLACES ± --- ± --- 3 PLACES ± --- ± 0.05 2 PLACES ± 0.13 ± 0.01 1 PLACE ± 0.25 ± --- ANGULAR ± 1°	MILL INCH --- --- --- --- --- --- --- ---	DRAWN BY DATE KS MONSON 2005/10/22 CHECKED BY DATE BRUSSELL 2005/10/22 APPROVED BY DATE BRUSSELL 2005/10/22	TITLE 1X5 SFP GANGED CAGE ASSY, FRAME W/ TABS, PRE-PLATED	MATERIAL NO. 747230004	DOCUMENT NO. SD-74723-004
DRAFT WHERE APPLICABLE MUST REMAIN WITHIN DIMENSIONS							
SET THIS DRAWING CONTAINS INFORMATION THAT IS PROPRIETARY TO MOLEX INCORPORATED AND SHOULD NOT BE USED WITHOUT WRITTEN PERMISSION							

DATE	REV	CHANGES	COMMENTS
2005/06/09	1	PRELIMINARY DOCUMENT	N/A
2005/10/22	A	INITIAL RELEASE	N/A

ENTER DESCRIPTION E.C. NO. US72006-0246 DRAWN BY MONSO 2005/10/22 CHECKED BY DAYE 2005/10/22 APPROVED BY BRUSSELL 2005/10/22 A	QUALITY SYMBOLS 	GENERAL TOLERANCES (UNLESS SPECIFIED)		DIMENSION STYLE IN/MM	SCALE 1:1	DESIGN UNITS METRIC	 THIRD ANGLE PROJECTION
		4 PLACES ± .010 ± .005 3 PLACES ± .005 ± .005 2 PLACES ± 0.13 ± .01 1 PLACE ± 0.25 ± .01 ANGULAR ± 1°	DRAWN BY DATE MONSO 2005/10/22 CHECKED BY DATE BRUSSELL 2005/10/22 APPROVED BY DATE BRUSSELL 2005/10/22	TITLE 1X5 SFP GANGED CAGE ASSY, FRAME W/ TABS, PRE-PLATED		MATERIAL NO. 747230004 DOCUMENT NO. SD-74723-004	
DRAFT WHERE APPLICABLE MUST REMAIN WITHIN DIMENSIONS		SET THIS DRAWING CONTAINS INFORMATION THAT IS PROPRIETARY TO MOLEX INCORPORATED AND SHOULD NOT BE USED WITHOUT WRITTEN PERMISSION					