

Excellent Integrated System Limited

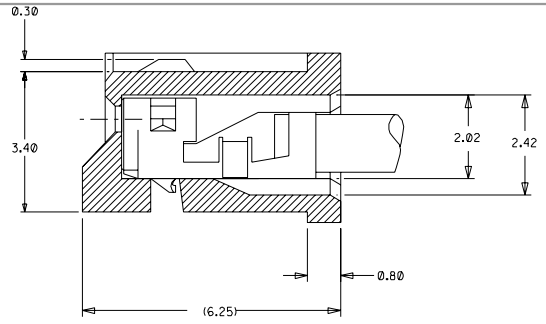
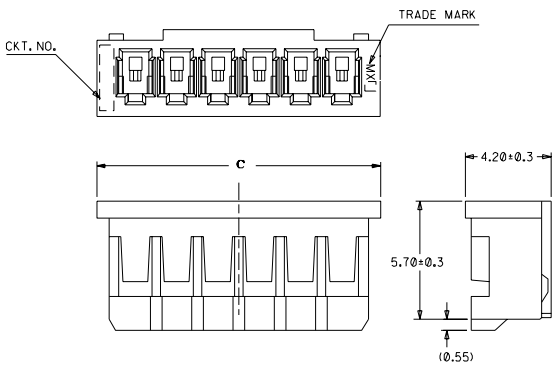
Stocking Distributor

Click to view price, real time Inventory, Delivery & Lifecycle Information:

[Molex Connector Corporation](#)
[0873691300](#)

For any questions, you can email us directly:
sales@integrated-circuit.com

DWG. NO. SD 87369-000
CAD FILE S87369.DCN



TERMINAL ASSEMBLY DRAWING
(10:1)

PART NO. LEGEND

87369 - ** 0 *

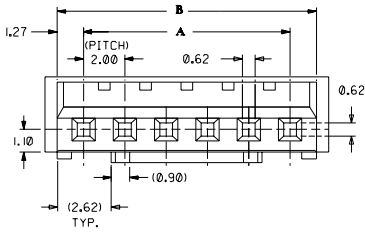
CKT SIZE COLOR OPTION

- 0 - NATURAL
- 1 - BLACK
- 2 - RED
- 3 - YELLOW
- 4 - BLUE
- 5 - GREEN

NOTES

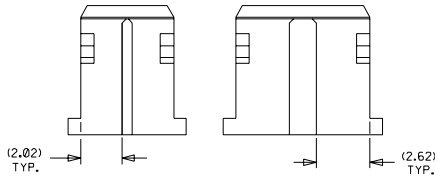
1. APPLICABLE TERMINAL :50212-8*00
2. MATERIAL : NYLON 66, UL94V-0 NATURAL
3. MATES WITH 89400-**10/**20 & 89401-**10

33.74	32.54	30	87369-160*	16
31.74	30.54	28	87369-150*	15
29.74	28.54	26	87369-140*	14
27.74	26.54	24	87369-130*	13
25.74	24.54	22	87369-120*	12
23.74	22.54	20	87369-110*	11
21.74	20.54	18	87369-100*	10
19.74	18.54	16	87369-090*	9
17.74	16.54	14	87369-080*	8
15.74	14.54	12	87369-070*	7
13.74	12.54	10	87369-060*	6
11.74	10.54	8	87369-050*	5
9.74	8.54	6	87369-040*	4
7.74	6.54	4	87369-030*	3
5.74	4.54	2	87369-020*	2
C	B	A	ENG NO.	CKT



**IN CASE OF
2 CIRCUIT HSG.**

**IN CASE OF
3 CIRCUIT HSG.**



UNITS : MM

				MATERIAL :	SEE NOTES		MOLEX SINGAPORE PTE LTD	
B5	REVISE PART NO. LEGEND & NOTE 3 PER ECN 1999-0061	-	SAM	980814			SHEET 1 OF 1	
B4	REL 87369-005 (GREEN) AS PER PDR# 98-06-0330 (AS PER ECN# S1998-0517)	-	SEE TOH	980623			GENERAL TOLERANCES ± 0.20/.008	
B3	ADD COLOR OPTION REPLACE SD-87369-00*	S60565	SAM GMS	960618	FINISH :		REV B5	
LTR	REVISION RECORD	ECN	DR	CHK	DATE	DRAWN BY CLEE 920305	CHK'D BY JOEY 920326	DWG. NO. SD 87369-00*
REVISE ONLY ON CAD SYSTEM				APPR'D BY ROY 920326	SCALE 5:1	TITLE : 2.0 MM PITCH WIRE TO BOARD CONN. RECEPTACLE		

THIS DRAWING CONTAINS INFORMATION THAT IS PROPRIETARY TO MOLEX (S) PTE LTD AND SHOULD NOT BE USED WITHOUT WRITTEN PERMISSION

DO NOT SCALE DRAWING