

Excellent Integrated System Limited

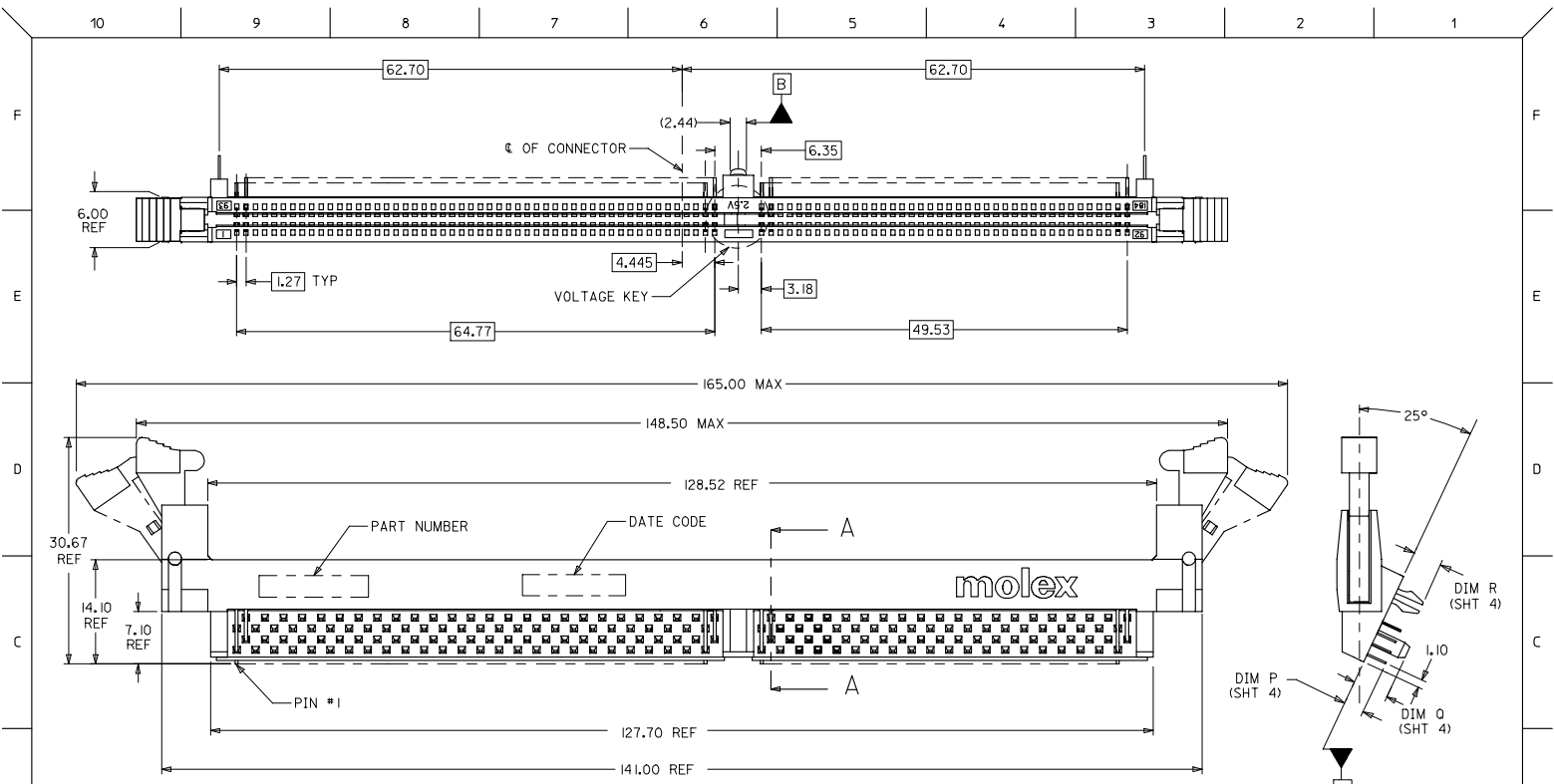
Stocking Distributor

Click to view price, real time Inventory, Delivery & Lifecycle Information:

[Molex Connector Corporation](#)
[0876232111](#)

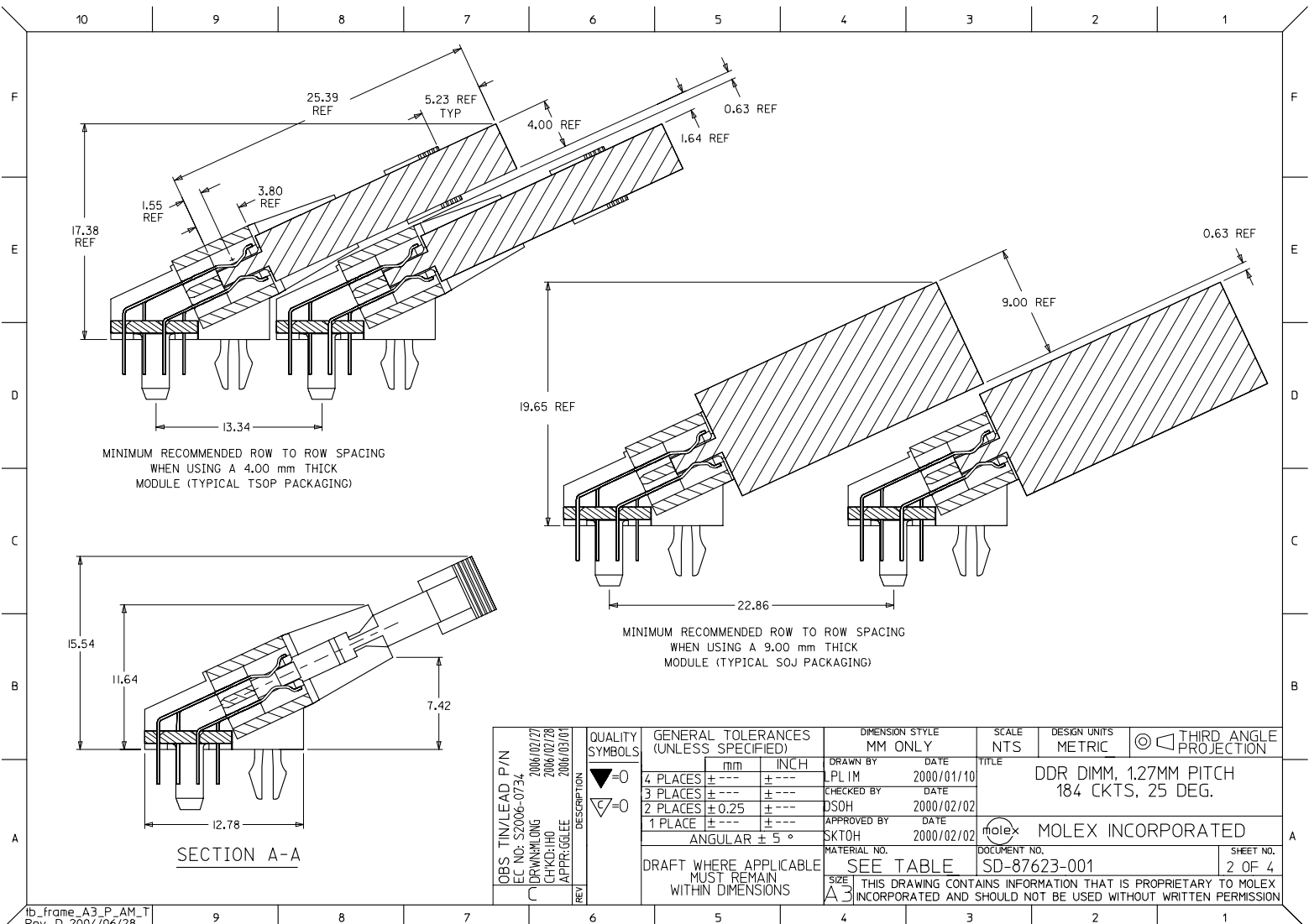
For any questions, you can email us directly:

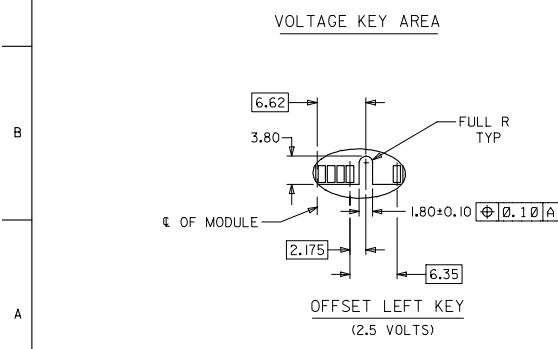
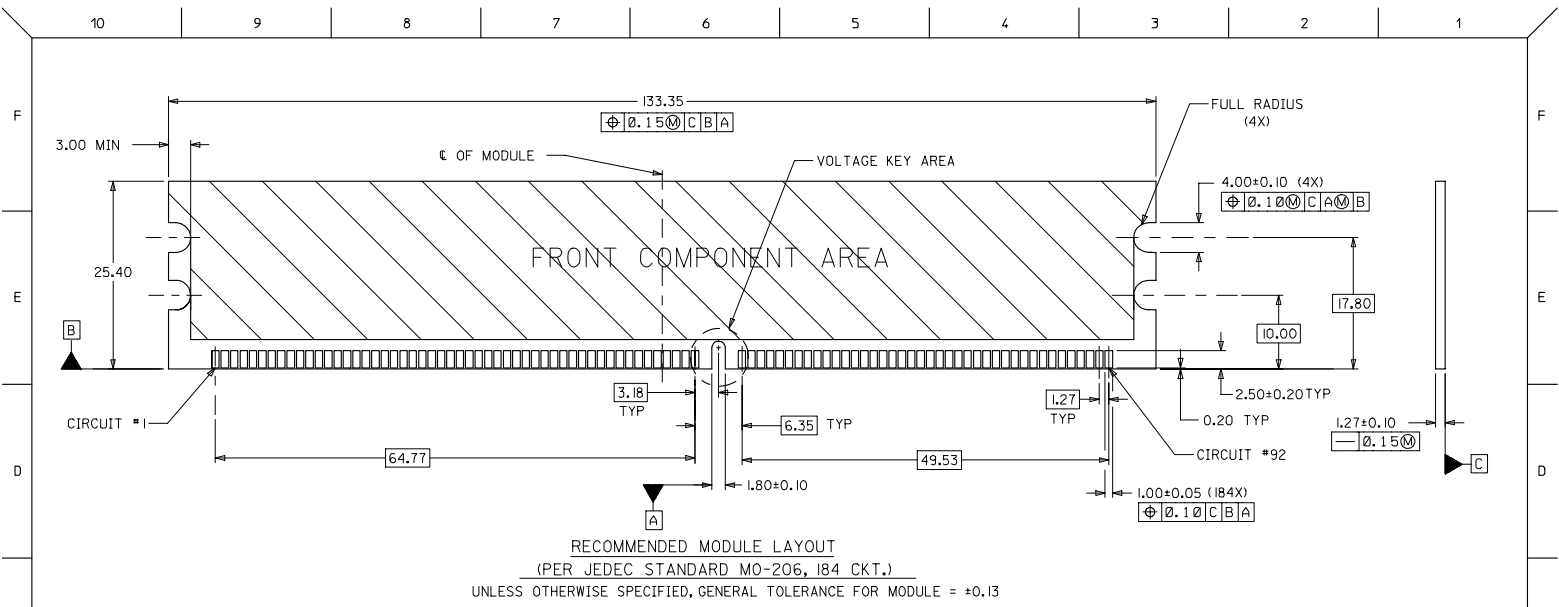
sales@integrated-circuit.com



- NOTES:**
- MATERIALS:** HOUSING & BASEPLATE - LCP, GLASS FILLED, UL 94V-0, COLOR: BLACK
LATCH - HIGH TEMP NYLON, GLASS FILLED, UL 94V-0, COLOR: BEIGE
TERMINAL AND FORKLOCK - COPPER ALLOY
 - FINISHES:** CONTACT AREA: SEE TABLE ON SHEET 4
SOLDER TAILS: 2.54um/100u" MIN. TIN
OVER 1.27mm/50u" MIN. NICKEL
 - PRODUCT SPECIFICATIONS:** PS-87623-002 FOR PERFORMANCE SPECIFICATIONS.
 - DATE CODE** SHALL BE MARKED LEGIBLY AS SHOWN: XX XX
YEAR WEEK
 - PART NUMBER** SHALL BE MARKED LEGIBLY AS SHOWN: 87623-0XXX
REFER TO TABLE

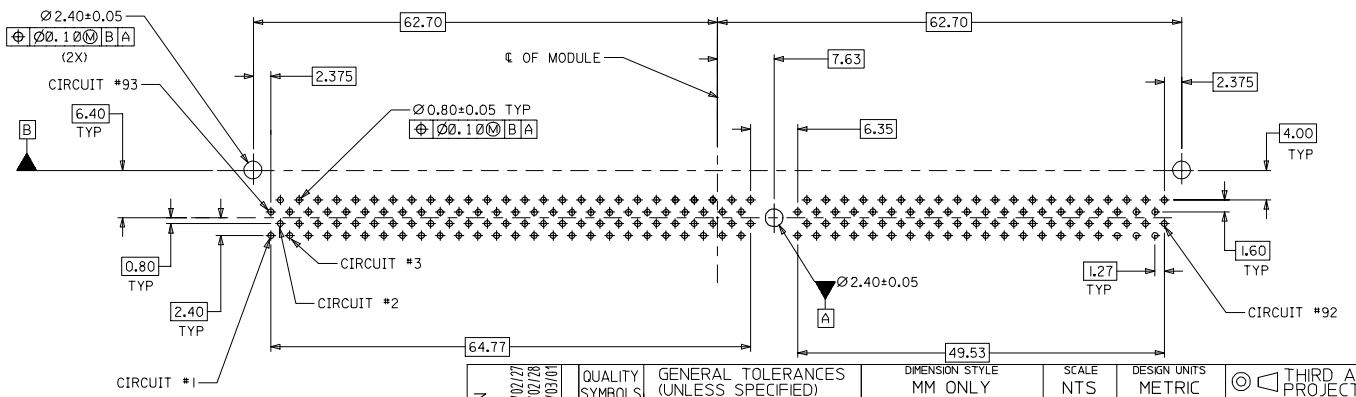
OBS TIN/LEAD P/N EC NO: S2006-0734 DRAWN/CHKD: DRW/MLONG 2006/02/28 APPR: GLEE 2006/03/01	QUALITY SYMBOLS ▽=0 ▽=0	GENERAL TOLERANCES (UNLESS SPECIFIED)		DIMENSION STYLE MM ONLY		SCALE NTS	DESIGN UNITS METRIC	THIRD ANGLE PROJECTION	
		4 PLACES ± --- ± ---	3 PLACES ± --- ± ---	2 PLACES ± 0.25 ± ---	1 PLACE ± --- ± ---	DRAWN BY LPL/IM	DATE 2000/01/10		TITLE DDR DIMM, 1.27MM PITCH 184 CKTS, 25 DEG.
		ANGULAR ± 5 °				CHECKED BY JSOH	DATE 2000/02/02		MOLEX INCORPORATED
		DRAFT WHERE APPLICABLE MUST REMAIN WITHIN DIMENSIONS				APPROVED BY SKTOH	DATE 2000/02/02		MATERIAL NO. SEE TABLE





OBS: TIN/LEAD P/N EC NO: S2006-0734 DRAWN: LONG CHKD: HR APPR: GLEE 2004/02/27 2006/02/28 2006/03/01	QUALITY SYMBOLS ▽=0 ▽=0	GENERAL TOLERANCES (UNLESS SPECIFIED)		DIMENSION STYLE MM ONLY		SCALE NTS	DESIGN UNITS METRIC	THIRD ANGLE PROJECTION		
		4 PLACES ± --- ± ---	3 PLACES ± --- ± ---	2 PLACES ± 0.25 ± ---	1 PLACE ± --- ± ---	ANGULAR ± 5 °	DRAWN BY LPL/IM		DATE 2000/01/10	TITLE DDR DIMM, 1.27MM PITCH 184 CKTS, 25 DEG.
		DRAFT WHERE APPLICABLE MUST REMAIN WITHIN DIMENSIONS		SEE TABLE	MATERIAL NO. SKTOH	DATE 2000/02/02	CHECKED BY DSOH		DATE 2000/02/02	
				MOLEX INCORPORATED	DOCUMENT NO. SD-87623-001	SHEET NO. 3 OF 4				

PART NUMBER	VOLTAGE KEY	CKT SIZE	TAIL LENGTH P±0.25	PEG LENGTH 0±0.25	FORK LENGTH R±0.25	RECOMMENDED PCB THICKNESS	FINISHES: CONTACT AREA
87623-2001	LEFT (2.5V)	184	2.79	3.18	3.18	1.57	SELECTIVE GOLD 0.38µM/150µ" MIN. GOLD OVER 1.27µM/500µ" MIN. NICKEL
87623-2011			3.18	4.83	3.94		
87623-2012			3.18	3.18	3.18		
87623-2013			3.81	4.83	4.42	2.84	
87623-2101			2.79	3.18	3.18	1.57	
87623-2111			3.18	4.83	3.94		
87623-2113			3.81	4.83	4.42		
87623-2115			3.18	3.18	3.18	1.57	



RECOMMENDED
P.C. BOARD HOLE PATTERN
(CONNECTOR SIDE)

OBS: TIN/LEAD P/N EC NO: S2006-0734 DRAWN BY: DRW:MLONG CHKD: HRD APPR: GLEE 2000/02/28 2006/03/01	QUALITY SYMBOLS ▽=0 ▽=0	GENERAL TOLERANCES (UNLESS SPECIFIED)		DIMENSION STYLE MM ONLY		SCALE NTS	DESIGN UNITS METRIC	THIRD ANGLE PROJECTION	
		4 PLACES ± --- ± ---	3 PLACES ± --- ± ---	2 PLACES ± 0.25 ± ---	1 PLACE ± --- ± ---	DRAWN BY: LPL IM	DATE: 2000/01/10		TITLE: DDR DIMM, 1.27MM PITCH 184 CKTS, 25 DEG.
		ANGULAR ± 5 °				CHECKED BY: DSOH	DATE: 2000/02/02		MOLEX INCORPORATED
		DRAFT WHERE APPLICABLE MUST REMAIN WITHIN DIMENSIONS				APPROVED BY: SKTOH	DATE: 2000/02/02		