

Excellent Integrated System Limited

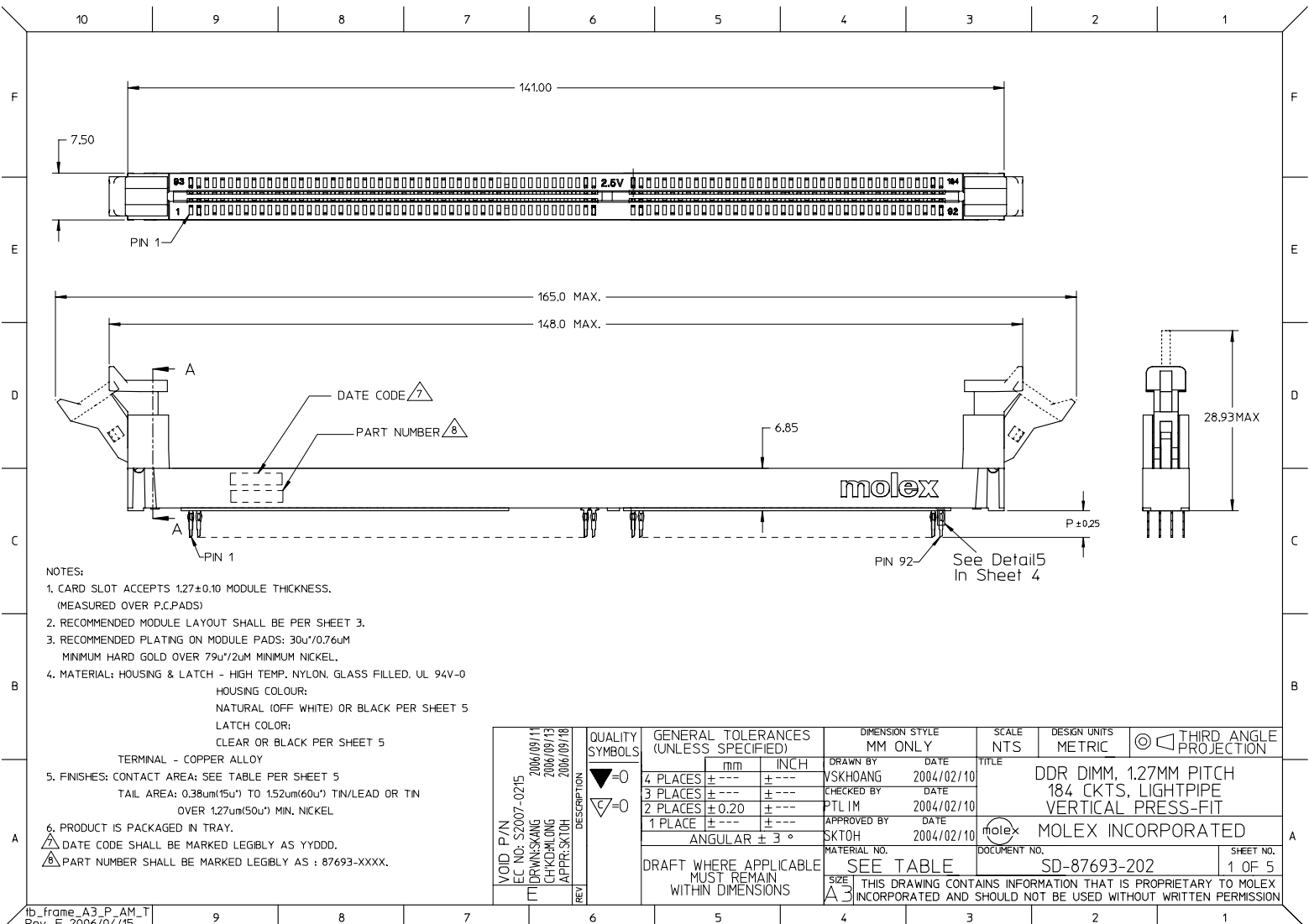
Stocking Distributor

Click to view price, real time Inventory, Delivery & Lifecycle Information:

[Molex Connector Corporation](#)
[0876931211](#)

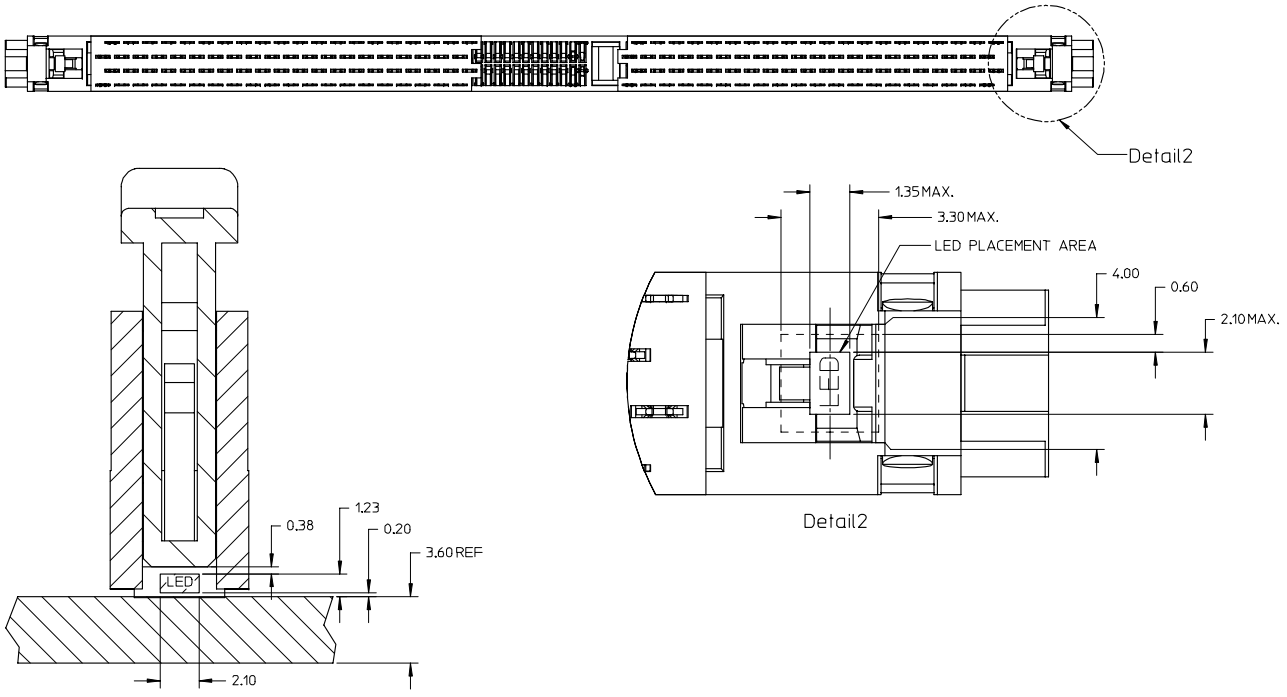
For any questions, you can email us directly:

sales@integrated-circuit.com



- NOTES:
- CARD SLOT ACCEPTS 1.27±0.10 MODULE THICKNESS. (MEASURED OVER P.C.PADS)
 - RECOMMENDED MODULE LAYOUT SHALL BE PER SHEET 3.
 - RECOMMENDED PLATING ON MODULE PADS: 30u"/0.76uM MINIMUM HARD GOLD OVER 79u"/2uM MINIMUM NICKEL.
 - MATERIAL: HOUSING & LATCH - HIGH TEMP. NYLON, GLASS FILLED, UL 94V-0
HOUSING COLOUR:
NATURAL (OFF WHITE) OR BLACK PER SHEET 5
LATCH COLOR:
CLEAR OR BLACK PER SHEET 5
TERMINAL - COPPER ALLOY
 - FINISHES: CONTACT AREA: SEE TABLE PER SHEET 5
TAIL AREA: 0.38um(15u") TO 152um(60u") TIN/LEAD OR TIN OVER 1.27um(50u") MIN. NICKEL
 - PRODUCT IS PACKAGED IN TRAY.
- DATE CODE SHALL BE MARKED LEGIBLY AS YYDD.
PART NUMBER SHALL BE MARKED LEGIBLY AS : 87693-XXXX.

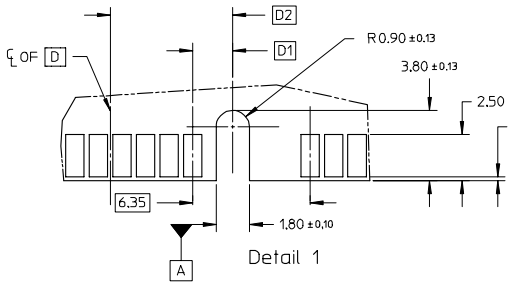
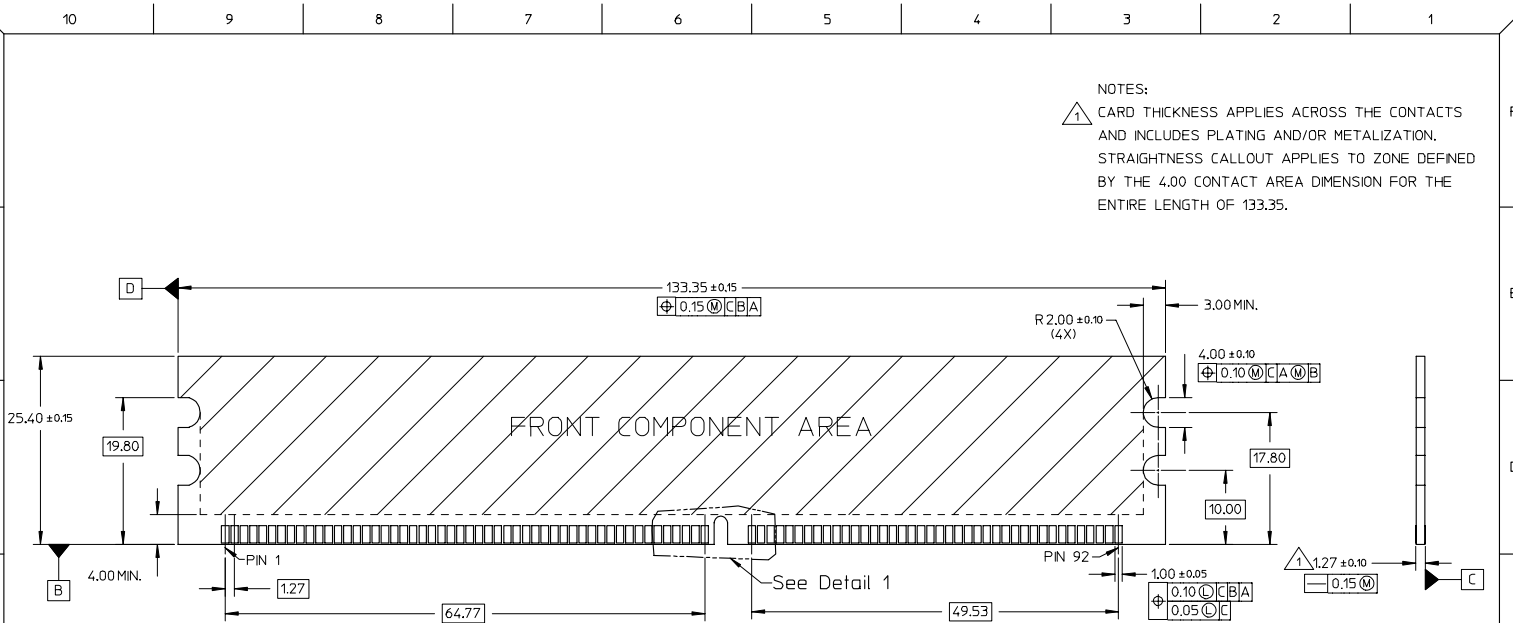
VOID P/N EC NO: S2007-0215 DRINKSANG CHKDRLONG APPR:SKTOH 2006/09/11 2006/09/13 2006/09/18	DESCRIPTION REV	QUALITY SYMBOLS ▽=0 ▽=0	GENERAL TOLERANCES (UNLESS SPECIFIED)		DIMENSION STYLE MM ONLY		SCALE NTS	DESIGN UNITS METRIC	THIRD ANGLE PROJECTION		
		4 PLACES ± --- ± --- 3 PLACES ± --- ± --- 2 PLACES ± 0.20 ± --- 1 PLACE ± --- ± ---	mm INCH	DRAWN BY VSKHOANG DATE 2004/02/10	CHECKED BY PTL IM DATE 2004/02/10	TITLE DDR DIMM, 1.27MM PITCH 184 CKTS, LIGHTPIPE VERTICAL PRESS-FIT		MOLEX INCORPORATED	MATERIAL NO. SEE TABLE	DOCUMENT NO. SD-87693-202	SHEET NO. 1 OF 5
		ANGULAR ± 3 °		APPROVED BY SKTOH DATE 2004/02/10							
		DRAFT WHERE APPLICABLE MUST REMAIN WITHIN DIMENSIONS			SIZE A3		THIS DRAWING CONTAINS INFORMATION THAT IS PROPRIETARY TO MOLEX INCORPORATED AND SHOULD NOT BE USED WITHOUT WRITTEN PERMISSION				



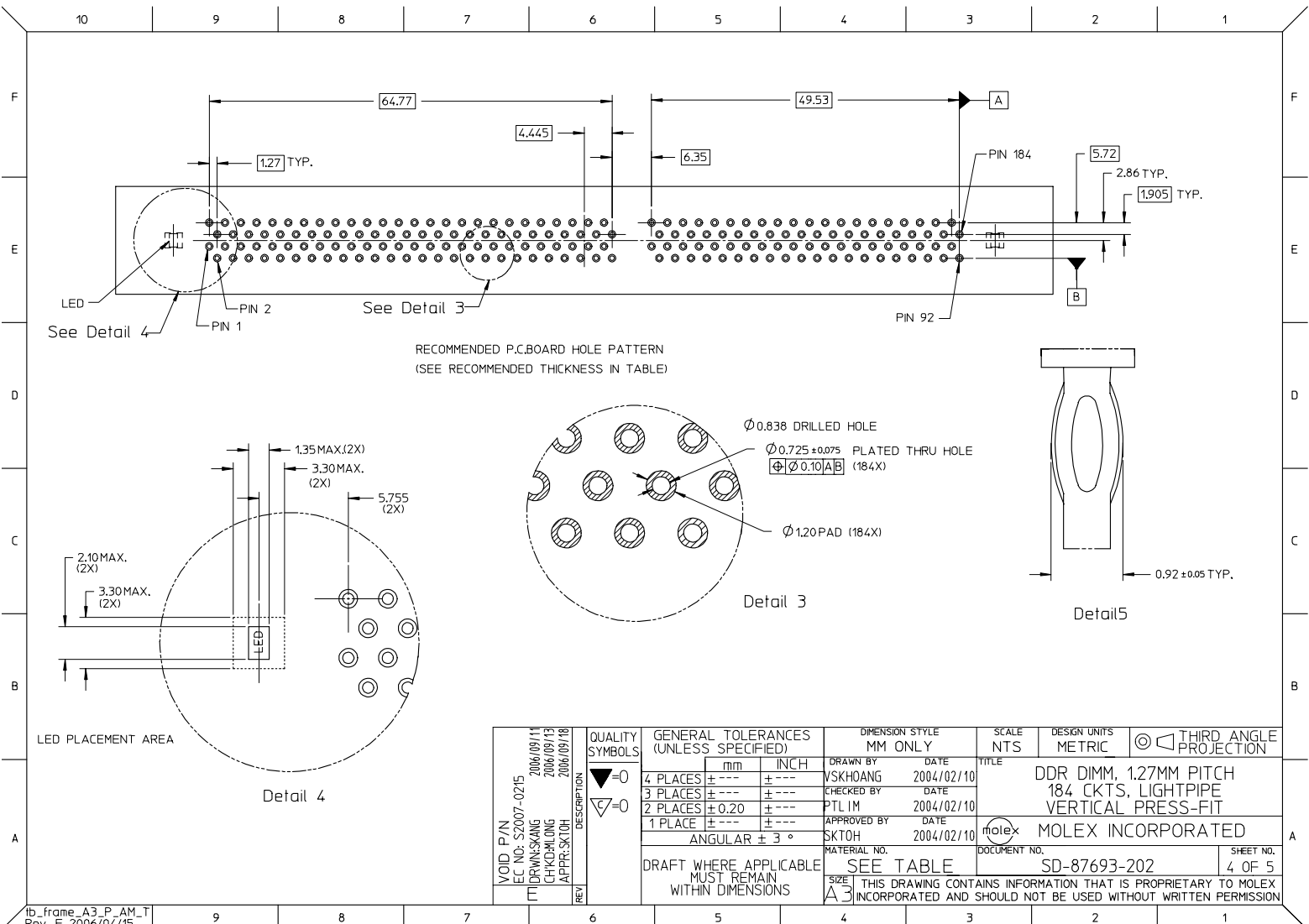
SECTION A-A

VOID P/N EC NO: S2007-0215 2006/09/11 DRWNSKANG 2006/09/13 CHKDRLONG 2006/09/18 APPRSKTOH	DESCRIPTION REV	QUALITY SYMBOLS	GENERAL TOLERANCES (UNLESS SPECIFIED)	DIMENSION STYLE MM ONLY	SCALE NTS	DESIGN UNITS METRIC	THIRD ANGLE PROJECTION																																	
		$\nabla=0$ $\nabla=0$	<table border="1"> <tr> <th></th> <th>mm</th> <th>INCH</th> </tr> <tr> <td>4 PLACES</td> <td>± ---</td> <td>± ---</td> </tr> <tr> <td>3 PLACES</td> <td>± ---</td> <td>± ---</td> </tr> <tr> <td>2 PLACES</td> <td>± 0.20</td> <td>± ---</td> </tr> <tr> <td>1 PLACE</td> <td>± ---</td> <td>± ---</td> </tr> </table>		mm	INCH	4 PLACES	± ---	± ---	3 PLACES	± ---	± ---	2 PLACES	± 0.20	± ---	1 PLACE	± ---	± ---	<table border="1"> <tr> <td>DRAWN BY</td> <td>DATE</td> </tr> <tr> <td>VSKHOANG</td> <td>2004/02/10</td> </tr> <tr> <td>CHECKED BY</td> <td>DATE</td> </tr> <tr> <td>PTL IM</td> <td>2004/02/10</td> </tr> <tr> <td>APPROVED BY</td> <td>DATE</td> </tr> <tr> <td>SKTOH</td> <td>2004/02/10</td> </tr> </table>	DRAWN BY	DATE	VSKHOANG	2004/02/10	CHECKED BY	DATE	PTL IM	2004/02/10	APPROVED BY	DATE	SKTOH	2004/02/10	<table border="1"> <tr> <td>TITLE</td> <td>DDR DIMM, 1.27MM PITCH 184 CKTS, LIGHTPIPE VERTICAL PRESS-FIT</td> </tr> <tr> <td>MATERIAL NO.</td> <td>SEE TABLE</td> </tr> <tr> <td>DOCUMENT NO.</td> <td>SD-87693-202</td> </tr> </table>	TITLE	DDR DIMM, 1.27MM PITCH 184 CKTS, LIGHTPIPE VERTICAL PRESS-FIT	MATERIAL NO.	SEE TABLE	DOCUMENT NO.	SD-87693-202	MOLEX INCORPORATED	
			mm	INCH																																				
		4 PLACES	± ---	± ---																																				
3 PLACES	± ---	± ---																																						
2 PLACES	± 0.20	± ---																																						
1 PLACE	± ---	± ---																																						
DRAWN BY	DATE																																							
VSKHOANG	2004/02/10																																							
CHECKED BY	DATE																																							
PTL IM	2004/02/10																																							
APPROVED BY	DATE																																							
SKTOH	2004/02/10																																							
TITLE	DDR DIMM, 1.27MM PITCH 184 CKTS, LIGHTPIPE VERTICAL PRESS-FIT																																							
MATERIAL NO.	SEE TABLE																																							
DOCUMENT NO.	SD-87693-202																																							
DRAFT WHERE APPLICABLE MUST REMAIN WITHIN DIMENSIONS		SIZE A3		THIS DRAWING CONTAINS INFORMATION THAT IS PROPRIETARY TO MOLEX INCORPORATED AND SHOULD NOT BE USED WITHOUT WRITTEN PERMISSION																																				

NOTES:
 ① CARD THICKNESS APPLIES ACROSS THE CONTACTS AND INCLUDES PLATING AND/OR METALIZATION.
 STRAIGHTNESS CALLOUT APPLIES TO ZONE DEFINED BY THE 4.00 CONTACT AREA DIMENSION FOR THE ENTIRE LENGTH OF 133.35.



VOID P/N EC NO: S2007-0215 2006/09/11 DRWNS:KANG CHKD:HLONG APPR:SKTOH 2006/09/18	DESCRIPTION 1.27MM PITCH 184 CONTACTS VERTICAL PRESS-FIT DDR DIMM	QUALITY SYMBOLS ▽=0 ▽=0	GENERAL TOLERANCES (UNLESS SPECIFIED)		DIMENSION STYLE MM ONLY	SCALE NTS	DESIGN UNITS METRIC	THIRD ANGLE PROJECTION		
		4 PLACES ± --- ± --- 3 PLACES ± --- ± --- 2 PLACES ± 0.20 ± --- 1 PLACE ± --- ± ---	mm INCH	DRAWN BY VSKHOANG	DATE 2004/02/10	TITLE DDR DIMM, 1.27MM PITCH 184 CKTS, LIGHTPIPE VERTICAL PRESS-FIT				
		ANGULAR ± 3 °		CHECKED BY PTLIM	DATE 2004/02/10	MOLEX INCORPORATED				
		DRAFT WHERE APPLICABLE MUST REMAIN WITHIN DIMENSIONS		APPROVED BY SKTOH	DATE 2004/02/10	MATERIAL NO. SEE TABLE	DOCUMENT NO. SD-87693-202	SHEET NO. 3 OF 5		



VOID P/N EC NO: S2007-0215 2006/09/11 DRINKSANG 2006/09/13 CHKHONG 2006/09/18 APPR:SKTOH	DESCRIPTION REV	QUALITY SYMBOLS ▽=0 ▽=0	GENERAL TOLERANCES (UNLESS SPECIFIED)		DIMENSION STYLE MM ONLY		SCALE NTS	DESIGN UNITS METRIC	THIRD ANGLE PROJECTION
		4 PLACES ± --- ± --- 3 PLACES ± --- ± --- 2 PLACES ± 0.20 ± --- 1 PLACE ± --- ± ---	mm INCH	DRAWN BY VSKHOANG DATE 2004/02/10	CHECKED BY PTL IM DATE 2004/02/10	TITLE DDR DIMM, 1.27MM PITCH 184 CKTS, LIGHTPIPE VERTICAL PRESS-FIT			
		ANGULAR ± 3 °		APPROVED BY SKTOH DATE 2004/02/10	MOLEX INCORPORATED				
		DRAFT WHERE APPLICABLE MUST REMAIN WITHIN DIMENSIONS		MATERIAL NO. SEE TABLE	DOCUMENT NO. SD-87693-202	SHEET NO. 4 OF 5			

	10	9	8	7	6	5	4	3	2	1			
		PLATING OPTION	PART NUMBER	TAIL LENGTH P±0.25	RECOMMENDED PCB THICKNESS	VOLTAGE KEY	DESCRIPTION	D1	D2	FINISHES CONTACT AREA	HOUSING COLOUR	LATCH	
F		TIN/LEAD	87693-4201	4.30	4.57	2.5 VOLT	LEFT	2.175	6.62	SELECTIVE GOLD 15u"/0.38uM MIN. GOLD OVER 50u"/1.27uM MIN. NICKEL	BLACK	BLACK	
	87693-4301		3.32	3.60	1.8 VOLT		CENTER	3.175	7.62				
	87693-4202		4.30	4.57		2.5 VOLT	LEFT	2.175	6.62				
	87693-4302		3.32	3.60	1.8 VOLT		CENTER	3.175	7.62				
	87693-4211		4.30	4.57		2.5 VOLT	LEFT	2.175	6.62				
	87693-4311		3.32	3.60	1.8 VOLT		CENTER	3.175	7.62				
	87693-4212		4.30	4.57		2.5 VOLT	LEFT	2.175	6.62				
	87693-4312		3.32	3.60	1.8 VOLT		CENTER	3.175	7.62				
	87693-5201		4.30	4.57		2.5 VOLT	LEFT	2.175	6.62				
	87693-5301		3.32	3.60	1.8 VOLT		CENTER	3.175	7.62				
	87693-5202		4.30	4.57		2.5 VOLT	LEFT	2.175	6.62				
	87693-5302		3.32	3.60	1.8 VOLT		CENTER	3.175	7.62				
	87693-5211		4.30	4.57		2.5 VOLT	LEFT	2.175	6.62				
	87693-5311		3.32	3.60	1.8 VOLT		CENTER	3.175	7.62				
	87693-5212	4.30	4.57	2.5 VOLT		LEFT	2.175	6.62					
	87693-5312	3.32	3.60		1.8 VOLT	CENTER	3.175	7.62					
	87693-6311	3.32	3.60	2.5 VOLT		LEFT	2.175	6.62	NATURAL				
D		TIN	87693-0201	4.30	4.57	2.5 VOLT	LEFT	2.175	6.62	SELECTIVE GOLD 15u"/0.38uM MIN. GOLD OVER 50u"/1.27uM MIN. NICKEL	BLACK	BLACK	
	87693-0301		3.32	3.60	1.8 VOLT		CENTER	3.175	7.62				
	87693-0202		4.30	4.57		2.5 VOLT	LEFT	2.175	6.62				
	87693-0302		3.32	3.60	1.8 VOLT		CENTER	3.175	7.62				
	87693-0311		3.32	3.60		2.5 VOLT	LEFT	2.175	6.62	NATURAL			
	87693-1201		4.30	4.57	2.5 VOLT	LEFT	2.175	6.62	SELECTIVE GOLD 15u"/0.38uM MIN. GOLD OVER 50u"/1.27uM MIN. NICKEL	BLACK	BLACK		
	87693-1301		3.32	3.60		1.8 VOLT	CENTER	3.175				7.62	
	87693-1202		4.30	4.57	2.5 VOLT		LEFT	2.175				6.62	
	87693-1302		3.32	3.60		1.8 VOLT	CENTER	3.175				7.62	
	87693-1211		4.30	4.57	2.5 VOLT		LEFT	2.175	6.62	SELECTIVE GOLD 30u"/0.76uM MIN. GOLD OVER 50u"/1.27uM MIN. NICKEL	BLACK	BLACK	
	87693-1311		3.32	3.60		1.8 VOLT	CENTER	3.175	7.62				
	87693-2311		3.32	3.60	2.5 VOLT		LEFT	2.175	6.62				NATURAL

VOID P/N EC NO: S2007-0215 2006/09/11 DRINKSANG 2006/09/13 CHKHORLONG 2006/09/18 APPR:SKTOH REV	QUALITY SYMBOLS	GENERAL TOLERANCES (UNLESS SPECIFIED)	DIMENSION STYLE MM ONLY	SCALE NTS	DESIGN UNITS METRIC	THIRD ANGLE PROJECTION
	$\nabla=0$ $\nabla=0$	4 PLACES ± --- ± --- 3 PLACES ± --- ± --- 2 PLACES ± 0.20 ± --- 1 PLACE ± --- ± --- ANGULAR ± 3 °	DRAWN BY: VSKHOANG CHECKED BY: PTLIM APPROVED BY: SKTOH DATE: 2004/02/10 DATE: 2004/02/10 DATE: 2004/02/10	TITLE	DDR DIMM, 1.27MM PITCH 184 CKTS, LIGHTPIPE VERTICAL PRESS-FIT	MOLEX INCORPORATED
	DRAFT WHERE APPLICABLE MUST REMAIN WITHIN DIMENSIONS	MATERIAL NO. SEE TABLE	DOCUMENT NO. SD-87693-202	SHEET NO. 5 OF 5		
	THIS DRAWING CONTAINS INFORMATION THAT IS PROPRIETARY TO MOLEX INCORPORATED AND SHOULD NOT BE USED WITHOUT WRITTEN PERMISSION					