

## Excellent Integrated System Limited

Stocking Distributor

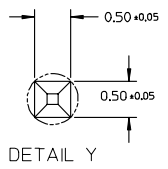
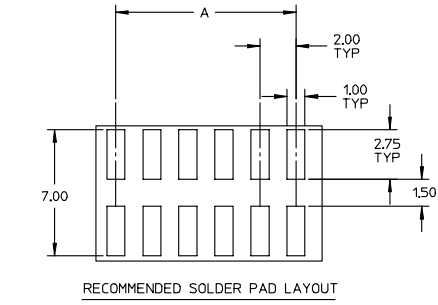
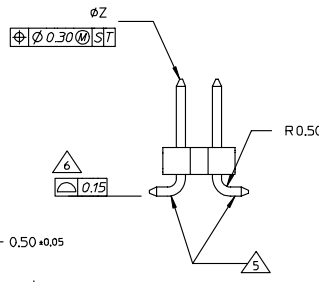
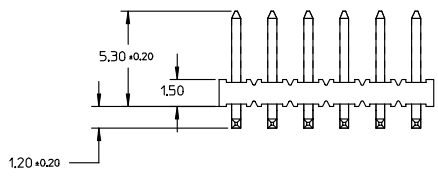
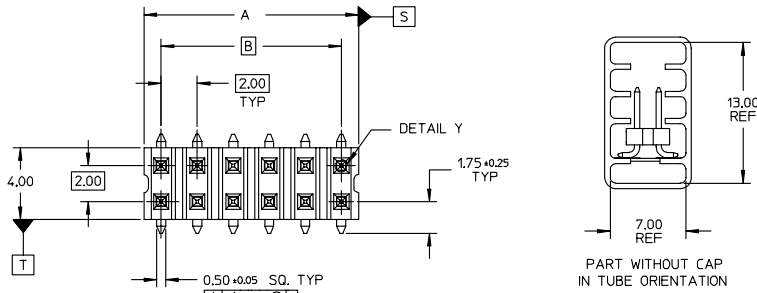
Click to view price, real time Inventory, Delivery & Lifecycle Information:

[Molex Connector Corporation](#)

[0877594084](#)

For any questions, you can email us directly:

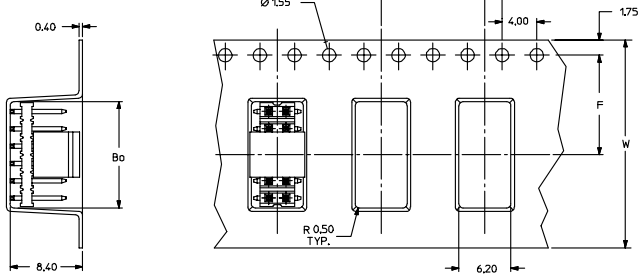
[sales@integrated-circuit.com](mailto:sales@integrated-circuit.com)



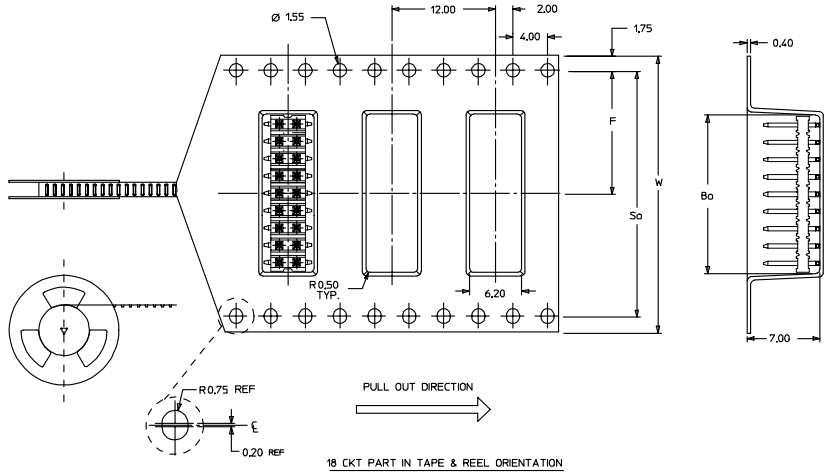
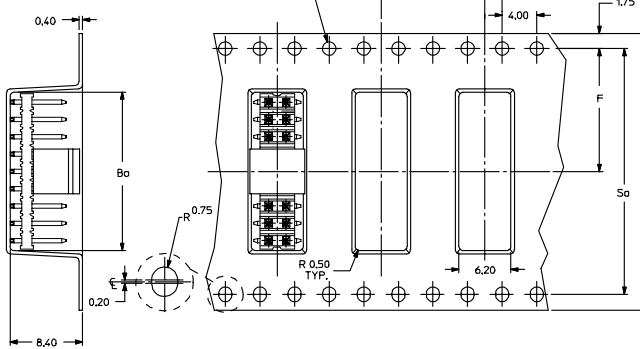
- NOTE:
- MATERIAL:  
HSG & CAP - HIGH TEMPERATURE THERMOPLASTIC, UL 94V-0, COLOUR BLACK  
PIN - 0.50 SQ PHOSPHOR BRONZE
  - PLATING:  
\*\*84 - 0.38um MIN GOLD PLATE AT CONTACT AREA, TIN PLATE AT SOLDER AREA, BOTH OVER NICKEL UNDERPLATE  
\*\*85 - 0.76um MIN GOLD PLATE AT CONTACT AREA, TIN PLATE AT SOLDER AREA, BOTH OVER NICKEL UNDERPLATE  
(\* - REPRESENTS DIFFERENT CKT SIZE, SEE TABLE AT SHT 3)
  - PIN PUSHOUT FORCE: 1KG MIN IN EITHER DIRECTION
  - PRODUCT SPEC PS-87761-100 APPLIES.
  - BEND DEPRESSION IS ACCEPTABLE SO LONG AS IT DOES NOT AFFECT THE OVERALL COPLANARITY OF TAIL.
  - COPLANARITY IS TO BE MEASURED BY RESTING THE SOLDER TAIL ON A GAUGE SURFACE.
  - CAP TO BE LOCATED AS CENTRAL OF PART AS POSSIBLE TOP SURFACE OF CAP TO BE FLAT FOR THE PURPOSE OF PICK & PLACE BY VACUUM SUCTION NOZZLE.
  - FOR ILLUSTRATION PURPOSES, 12CKT IS SHOWN, 18CKT IS SHOWN ON SHT 2 FOR TAPE & REEL.
  - TUBE LENGTH IS 560MM REF STANDARD.

EC NO: S2004-0293 DRAWN/SEE: 2004/01/30 CHKD/KCLING: 2004/01/30 APPR: SKTOH: 2004/02/05	QUALITY SYMBOLS -0 -0	GENERAL TOLERANCES (UNLESS SPECIFIED)		SCALE: NTS	DESIGN UNITS: METRIC	THIRD ANGLE PROJECTION	REVISE ON CAD ONLY
		4 PLACES	± ---	± ---	DIMENSION STYLE: MM ONLY		TITLE: SALES DRAWING MGRID 2MM DUAL ROW SMT HDR
A	DESCRIPTION	3 PLACES	± ---	± ---	DRAWN BY: KSEE	DATE: 2003/12/23	MATERIAL NO.: SEE TABLE DOCUMENT NO.: SD-87759-215 SHEET NO.: 1 OF 3
		2 PLACES	± 0.2	± ---	CHECKED BY: KCLING	DATE: 2004/01/12	
		1 PLACE	± ---	± ---	APPROVED BY: SKTOH	DATE: 2004/01/12	
		ANGULAR ± 3°		DRAFT WHERE APPLICABLE MUST REMAIN WITHIN DIMENSIONS		THIS DRAWING CONTAINS INFORMATION THAT IS PROPRIETARY TO MOLEX INCORPORATED AND SHOULD NOT BE USED WITHOUT WRITTEN PERMISSION	

EMBOSSED CARRIER TAPE TYPE 'A'



EMBOSSED CARRIER TAPE TYPE 'B'



18 CKT PART IN TAPE & REEL ORIENTATION

EC NO: S2004-0293 DRAWN/SEE: 2004/01/30 CHKD/KCLING: 2004/01/30 APPR: SKTOH: 2004/02/05	QUALITY SYMBOLS	GENERAL TOLERANCES (UNLESS SPECIFIED)		SCALE NTS	DESIGN UNITS METRIC	THIRD ANGLE PROJECTION	REVISE ON CAD ONLY	
	-0 .0	4 PLACES	mm	INCH	DIMENSION STYLE MM ONLY		TITLE SALES DRAWING MGRID 2MM DUAL ROW SMT HDR MOLEX INCORPORATED	
		3 PLACES	±	±	DRAWN BY KSEE	DATE 2003/12/23		
		2 PLACES	±0.2	±	CHECKED BY KCLING	DATE 2004/01/12		
1 PLACE	±	±	APPROVED BY SKTOH	DATE 2004/01/12	MATERIAL NO. SEE TABLE	DOCUMENT NO. SD-87759-215	SHEET NO. 2 OF 3	
DRAFT WHERE APPLICABLE MUST REMAIN WITHIN DIMENSIONS		THIS DRAWING CONTAINS INFORMATION THAT IS PROPRIETARY TO MOLEX INCORPORATED AND SHOULD NOT BE USED WITHOUT WRITTEN PERMISSION						

	10	9	8			7			6	5	4	3	2	87759
	PART NUMBER WITHOUT CAP IN TUBE	PART NUMBER WITHOUT CAP IN TAPE & REEL.	CKT SIZE	A	B	Bo	F	So	W	EMBOSSSED TYPE				
F	87759-4014	87759-4084	40	39.90	38.00	40.20	26.20	52.40	56.00	B				
	87759-4015	87759-4085	40	39.90	38.00	40.20	26.20	52.40	56.00	B				

E														F
D														D
C														C
B														B
A														A

EC NO: S2004-0293 DRAWN/SEE: 2004/01/30 CHKD/KCLING: 2004/01/30 APPR: SKTOH 2004/02/05	QUALITY SYMBOLS ▽-0 ▽.0	GENERAL TOLERANCES (UNLESS SPECIFIED)		SCALE NTS	DESIGN UNITS METRIC	THIRD ANGLE PROJECTION	REVISE ON CAD ONLY
			mm	INCH	DIMENSION STYLE		TITLE
		4 PLACES	± ---	± ---	MM ONLY		SALES DRAWING
		3 PLACES	± ---	± ---	DRAWN BY	DATE	MGRID 2MM DUAL ROW SMT
	2 PLACES	± 0.2	± ---	KSEE	2003/12/23	HDR	
	1 PLACE	± ---	± ---	CHECKED BY	DATE	MOLEX INCORPORATED	
	ANGULAR ± 3°		APPROVED BY		DATE	MATERIAL NO.	DOCUMENT NO.
	DRAFT WHERE APPLICABLE		SKTOH		2004/01/12	SEE TABLE	SD-87759-215
	MUST REMAIN WITHIN DIMENSIONS		THIS DRAWING CONTAINS INFORMATION THAT IS PROPRIETARY TO MOLEX INCORPORATED AND SHOULD NOT BE USED WITHOUT WRITTEN PERMISSION		SHEET NO. 3 OF 3		