

## Excellent Integrated System Limited

Stocking Distributor

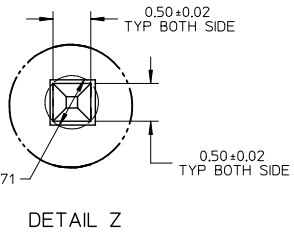
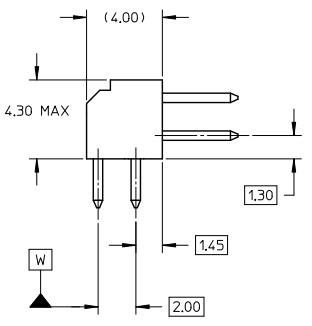
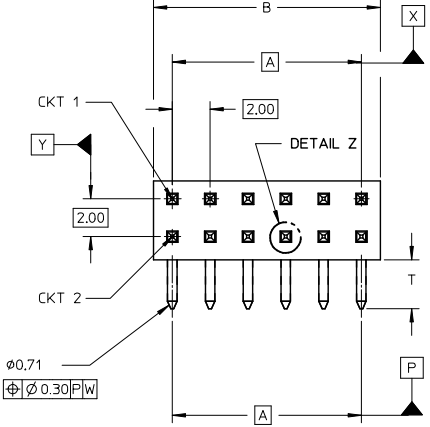
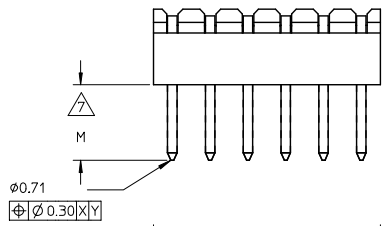
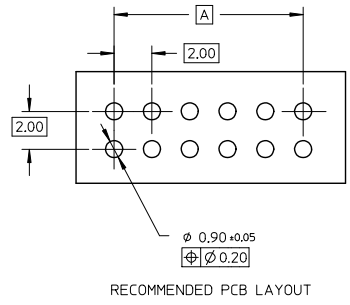
Click to view price, real time Inventory, Delivery & Lifecycle Information:

[Molex Connector Corporation](#)  
[0877603038](#)

For any questions, you can email us directly:

[sales@integrated-circuit.com](mailto:sales@integrated-circuit.com)

10 9 8 7 6 5 4 3 2 1



**NOTES:**

**1. MATERIAL:**

HSG: PCT, 30% GLASS FILLED,UL 94V-0,  
COLOUR BLACK.

PIN: 0.50MM SQ PHOSPHOR BRONZE 510

**PLATING:**

\*\*\*5 - 0.05um MIN - 0.25um MAX GOLD IN CONTACT AREA,  
2.00um MIN TIN IN SOLDERTAIL AREA, BOTH OVER  
1.25um MIN NICKEL OVERALL

\*\*\*6 - 0.38um MIN GOLD IN CONTACT AREA,  
2.00um MIN TIN IN SOLDERTAIL AREA, BOTH OVER  
1.25um MIN NICKEL OVERALL

\*\*\*7 - 0.76um MIN GOLD IN CONTACT AREA,  
2.00um MIN TIN IN SOLDERTAIL AREA, BOTH OVER  
1.25um MIN NICKEL OVERALL

\*\*\*8 - 2.54um MIN TIN OVER  
1.25um MIN NICKEL OVERALL

3. 12 CKT USED FOR ILLUSTRATION ONLY

4. PART TO BE PACKED IN POCKET TRAY/TUBE (SEE TABLE).

5. PRODUCT SPEC PS-87761-100 APPLIES.

6. RECOMMENDED PCB BOARD THK 1.60±0.10 MM.

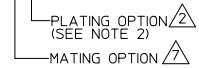
**MATING LENGTH:**

- 1 - 4.00MM
- 2 - 3.50MM
- 3 - 3.06MM
- 4 - 5.75MM

**PART NUMBERS THAT ARE UNAVAILABLE IN THIS SD:**  
87760-0646, 87760-1046, 87760-1446, 87760-2446, 87760-4046.  
(REFER TO SD-87760-133 FOR THESE PART NUMBERS)

**LEGEND:**

87760 - \* \* \* \*



SHT 3, +87760-5516 EC NO: S2013-0842 DRAWN BY: DRWNAISEE CHKD: SKANG APPR: MLONG	2013/05/31 2013/06/28 2013/07/08	DESCRIPTION	QUALITY SYMBOLS	GENERAL TOLERANCES (UNLESS SPECIFIED)		DIMENSION STYLE		SCALE	DESIGN UNITS	THIRD ANGLE PROJECTION
				mm	INCH	MM ONLY	NTS	METRIC		
REV A16			$\nabla=0$ $\nabla=0$ $\nabla=0$	4 PLACES	±---	±---	DRAWN BY	DATE	TITLE MGRID, 2MM DUAL ROW HDR, R/A	
				3 PLACES	±---	±---	KSEE	2003/10/15		
				2 PLACES	±0.2	±---	CHECKED BY	DATE		
				1 PLACE	±---	±---	KCLING	2003/12/02		
				0 PLACE	±	±	APPROVED BY	DATE	DOCUMENT NO. SD-87760-109	
				ANGULAR ± 3°		SKTOH	2003/12/11			
				DRAFT WHERE APPLICABLE MUST REMAIN WITHIN DIMENSIONS		MATERIAL NO. SEE TABLE				
Rev. G 2012/01/11						SIZE A3		THIS DRAWING CONTAINS INFORMATION THAT IS PROPRIETARY TO MOLEX INCORPORATED AND SHOULD NOT BE USED WITHOUT WRITTEN PERMISSION		SHEET NO. 1 OF 3

10 9 8 7 6 5 4 3 2 1

10		9		8		7		6		5		4		3		2		1	
PART NUMBER	VOID PIN LOCATION	CKT SIZE	A	B	M		T		PACKAGING TYPE										
87760-04**	-	04	2.00	4.00															
87760-06**	-	06	4.00	6.00															
87760-08**	-	08	6.00	8.00															
87760-10**	-	10	8.00	10.00															
87760-12**	-	12	10.00	12.00															
87760-14**	-	14	12.00	14.00															
87760-16**	-	16	14.00	16.00															
87760-18**	-	18	16.00	18.00															
87760-20**	-	20	18.00	20.00															
87760-22**	-	22	20.00	22.00															
87760-24**	-	24	22.00	24.00															
87760-26**	-	26	24.00	26.00	REFER TO NOTE 7		2.60		TRAY		<p>PART IN TUBE</p>								
87760-28**	-	28	26.00	28.00															
87760-30**	-	30	28.00	30.00															
87760-32**	-	32	30.00	32.00															
87760-34**	-	34	32.00	34.00															
87760-36**	-	36	34.00	36.00															
87760-38**	-	38	36.00	38.00															
87760-40**	-	40	38.00	40.00															
87760-42**	-	42	40.00	42.00															
87760-44**	-	44	42.00	44.00															
87760-46**	-	46	44.00	46.00															
87760-48**	-	48	46.00	48.00															
87760-50**	-	50	48.00	50.00															

SHT 3, +87760-5516 IEC NO. S2013-0842 DRAWN BY DRWATSEE 2013/05/31 CHECKED BY CHYD-SKANG 2013/06/28 APPROVED BY APPLHLONG 2013/07/08	QUALITY SYMBOLS	GENERAL TOLERANCES (UNLESS SPECIFIED)	DIMENSION STYLE	SCALE	DESIGN UNITS	THIRD ANGLE PROJECTION																									
	$\nabla=0$ $\nabla=0$ $\nabla=0$	<table border="1"> <thead> <tr> <th></th> <th>mm</th> <th>INCH</th> </tr> </thead> <tbody> <tr> <td>4 PLACES</td> <td>±---</td> <td>±---</td> </tr> <tr> <td>3 PLACES</td> <td>±---</td> <td>±---</td> </tr> <tr> <td>2 PLACES</td> <td>±0.2</td> <td>±---</td> </tr> <tr> <td>1 PLACE</td> <td>±---</td> <td>±---</td> </tr> <tr> <td>0 PLACE</td> <td>±</td> <td>±</td> </tr> </tbody> </table>		mm	INCH	4 PLACES	±---	±---	3 PLACES	±---	±---	2 PLACES	±0.2	±---	1 PLACE	±---	±---	0 PLACE	±	±	MM ONLY	NTS	METRIC								
		mm	INCH																												
	4 PLACES	±---	±---																												
3 PLACES	±---	±---																													
2 PLACES	±0.2	±---																													
1 PLACE	±---	±---																													
0 PLACE	±	±																													
DESCRIPTION	<table border="1"> <thead> <tr> <th></th> <th>mm</th> <th>INCH</th> </tr> </thead> <tbody> <tr> <td>4 PLACES</td> <td>±---</td> <td>±---</td> </tr> <tr> <td>3 PLACES</td> <td>±---</td> <td>±---</td> </tr> <tr> <td>2 PLACES</td> <td>±0.2</td> <td>±---</td> </tr> <tr> <td>1 PLACE</td> <td>±---</td> <td>±---</td> </tr> <tr> <td>0 PLACE</td> <td>±</td> <td>±</td> </tr> </tbody> </table>		mm	INCH	4 PLACES	±---	±---	3 PLACES	±---	±---	2 PLACES	±0.2	±---	1 PLACE	±---	±---	0 PLACE	±	±	<table border="1"> <thead> <tr> <th></th> <th>DATE</th> </tr> </thead> <tbody> <tr> <td>DRAWN BY</td> <td>2003/10/15</td> </tr> <tr> <td>CHECKED BY</td> <td>2003/12/02</td> </tr> <tr> <td>APPROVED BY</td> <td>2003/12/11</td> </tr> </tbody> </table>		DATE	DRAWN BY	2003/10/15	CHECKED BY	2003/12/02	APPROVED BY	2003/12/11	TITLE		
	mm	INCH																													
4 PLACES	±---	±---																													
3 PLACES	±---	±---																													
2 PLACES	±0.2	±---																													
1 PLACE	±---	±---																													
0 PLACE	±	±																													
	DATE																														
DRAWN BY	2003/10/15																														
CHECKED BY	2003/12/02																														
APPROVED BY	2003/12/11																														
REV	ANGULAR ± 3° DRAFT WHERE APPLICABLE MUST REMAIN WITHIN DIMENSIONS	SEE TABLE THIS DRAWING CONTAINS INFORMATION THAT IS PROPRIETARY TO MOLEX INCORPORATED AND SHOULD NOT BE USED WITHOUT WRITTEN PERMISSION	MGRID, 2MM DUAL ROW HDR, R/A	DOCUMENT NO. SD-87760-109	SHEET NO. 2 OF 3																										

10	9	8	7	6	5	4	3	2	1
PART NUMBER	VOID PIN LOCATIONS	CKT SIZE	A	B	M	T	PACKAGING TYPE		
87760-5116	5, 6 & 26	50	48.00	50.00	REFER TO NOTE	2.60	TUBE		
87760-531*	-	24	22.00	24.00		1.50	TRAY		
87760-5216	-	04	2.00	4.00					
87760-5416	-	20	18.00	20.00					
87760-5248	-	28	26.00	28.00		2.60	TUBE		
87760-5516	5, 6, 7, 8, 9, 10, 15, 16, 17, 18, 19, 20, 25, 26, 27, 28, 29, 30	34	32.00	34.00					

SHT 3, +87760-5516 EC NO: S2013-0842 DRAWN BY: DRW:ATSEE CHKD:SKANG APPR:MLONG 2013/05/31 2013/06/28 2013/07/08	QUALITY SYMBOLS	GENERAL TOLERANCES (UNLESS SPECIFIED)	DIMENSION STYLE	SCALE	DESIGN UNITS	THIRD ANGLE PROJECTION
	=0	mm INCH	MM ONLY	NTS	METRIC	
	=0	4 PLACES ± --- ± ---	DRAWN BY DATE	TITLE		
	=0	3 PLACES ± --- ± ---	KSEE 2003/10/15	MGRID, 2MM DUAL ROW HDR. R/A		
	=0	2 PLACES ± 0.2 ± ---	CHECKED BY DATE			
	1 PLACE ± --- ± ---	KCLING 2003/12/02				
	0 PLACE ± ±	APPROVED BY DATE	MATERIAL NO.	DOCUMENT NO.	SHEET NO.	
	ANGULAR ± 3 °	SKTOH 2003/12/11	SEE TABLE	SD-87760-109	3 OF 3	
	DRAFT WHERE APPLICABLE MUST REMAIN WITHIN DIMENSIONS		THIS DRAWING CONTAINS INFORMATION THAT IS PROPRIETARY TO MOLEX INCORPORATED AND SHOULD NOT BE USED WITHOUT WRITTEN PERMISSION			