

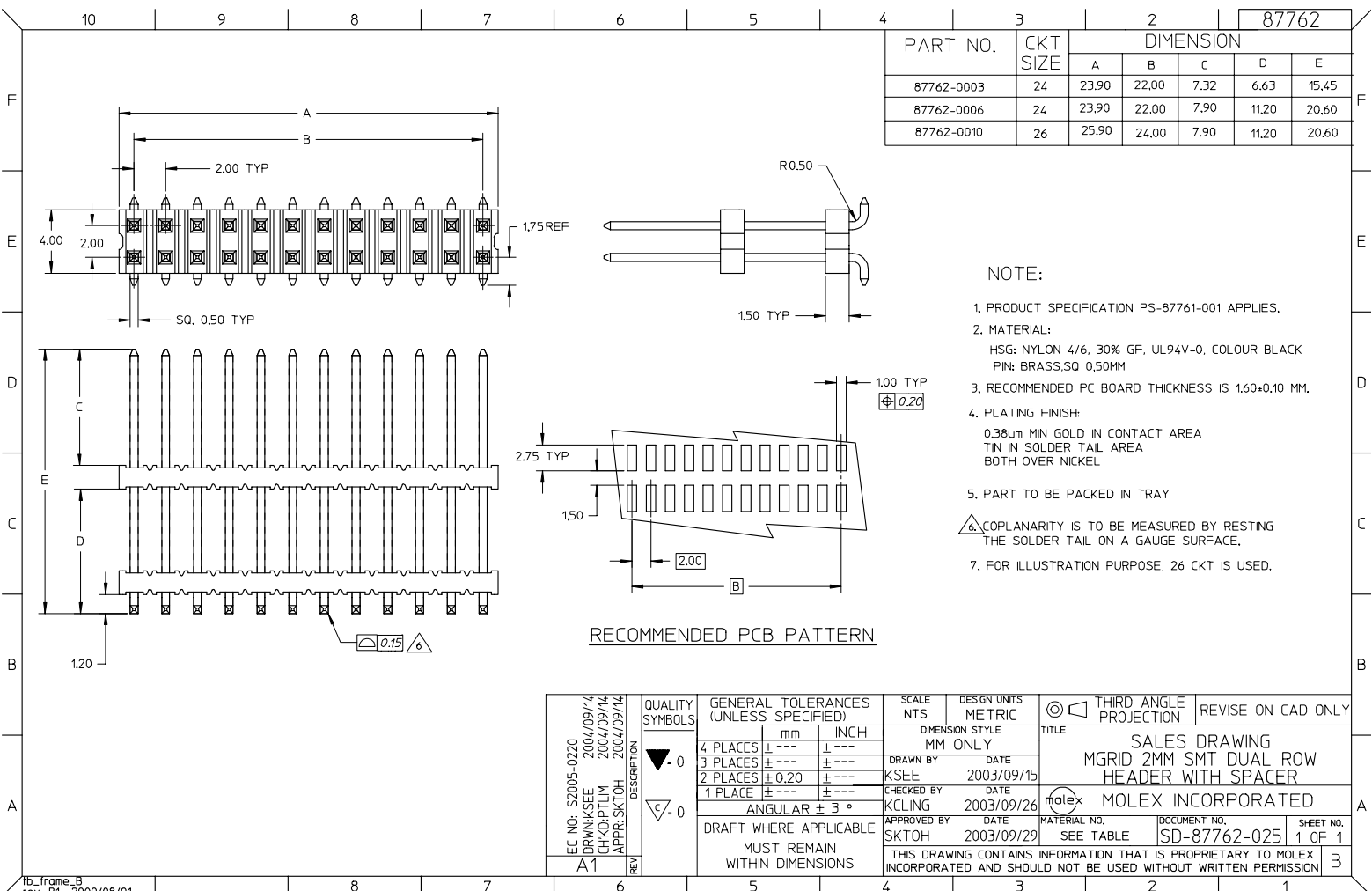
## Excellent Integrated System Limited

Stocking Distributor

Click to view price, real time Inventory, Delivery & Lifecycle Information:

[Molex Connector Corporation](#)  
[0877620006](#)

For any questions, you can email us directly:  
[sales@integrated-circuit.com](mailto:sales@integrated-circuit.com)



PART NO.	CKT SIZE	DIMENSION				
		A	B	C	D	E
87762-0003	24	23.90	22.00	7.32	6.63	15.45
87762-0006	24	23.90	22.00	7.90	11.20	20.60
87762-0010	26	25.90	24.00	7.90	11.20	20.60

- NOTE:
- PRODUCT SPECIFICATION PS-87761-001 APPLIES.
  - MATERIAL:  
HSG: NYLON 4/6, 30% GF, UL94V-0. COLOUR BLACK  
PIN: BRASS, SQ 0.50MM
  - RECOMMENDED PC BOARD THICKNESS IS 1.60±0.10 MM.
  - PLATING FINISH:  
0.38µm MIN GOLD IN CONTACT AREA  
TIN IN SOLDER TAIL AREA  
BOTH OVER NICKEL
  - PART TO BE PACKED IN TRAY
  - COPLANARITY IS TO BE MEASURED BY RESTING THE SOLDER TAIL ON A GAUGE SURFACE.
  - FOR ILLUSTRATION PURPOSE, 26 CKT IS USED.

RECOMMENDED PCB PATTERN

EC NO: S2005-0220 DRAWN/SEE: 2004/09/14 CHKD:PTLM 2004/09/14 APPR: SKTOH 2004/09/14	QUALITY SYMBOLS	GENERAL TOLERANCES (UNLESS SPECIFIED) <table border="1"> <tr> <th></th> <th>mm</th> <th>INCH</th> </tr> <tr> <td>4 PLACES</td> <td>±---</td> <td>±---</td> </tr> <tr> <td>3 PLACES</td> <td>±---</td> <td>±---</td> </tr> <tr> <td>2 PLACES</td> <td>±0.20</td> <td>±---</td> </tr> <tr> <td>1 PLACE</td> <td>±---</td> <td>±---</td> </tr> </table> ANGULAR ± 3° DRAFT WHERE APPLICABLE MUST REMAIN WITHIN DIMENSIONS		mm	INCH	4 PLACES	±---	±---	3 PLACES	±---	±---	2 PLACES	±0.20	±---	1 PLACE	±---	±---	SCALE NTS	DESIGN UNITS METRIC	THIRD ANGLE PROJECTION	REVISE ON CAD ONLY
			mm	INCH																	
	4 PLACES		±---	±---																	
	3 PLACES		±---	±---																	
2 PLACES	±0.20	±---																			
1 PLACE	±---	±---																			
DESCRIPTION	MM ONLY	TITLE	SALES DRAWING																		
REV			MGRID 2MM SMT DUAL ROW HEADER WITH SPACER																		
			MOLEX INCORPORATED																		