

Excellent Integrated System Limited

Stocking Distributor

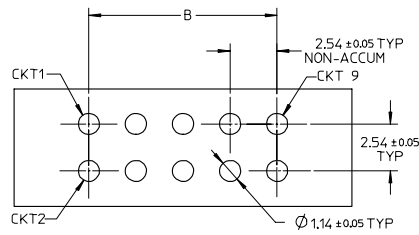
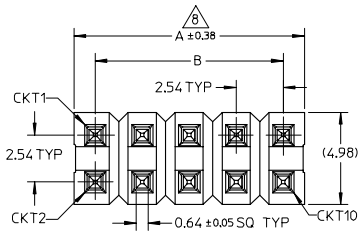
Click to view price, real time Inventory, Delivery & Lifecycle Information:

[Molex Connector Corporation](#)
[0879140204](#)

For any questions, you can email us directly:

sales@integrated-circuit.com

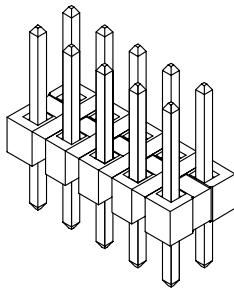
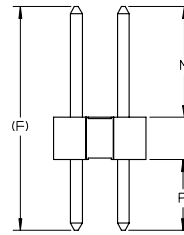
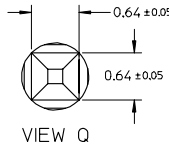
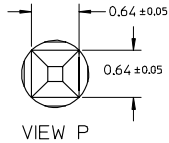
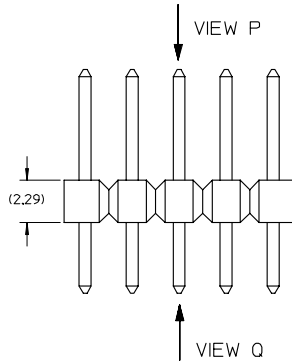
10 9 8 7 6 5 4 3 2 1



RECOMMENDED PCB LAYOUT

NOTES:

1. MATERIAL:
HSG: LCP, GLASS-FILLED, UL94V-0,
COLOR: BLACK
PIN: 0.64MM SQ PIN, COPPER ALLOY
2. PLATING TYPE:
(1) : 0.381 μm MIN. GOLD PLATE ON CONTACT AND
1.905 μm MIN. TIN ON SOLDERTAIL OVER
1.270 μm MIN. NICKEL OVERALL.
(2) : 0.762 μm MIN. GOLD PLATE ON CONTACT AND
1.905 μm MIN. TIN ON SOLDERTAIL OVER
1.270 μm MIN. NICKEL OVERALL.
(3) : 2.540 μm MIN. TIN IN SELECTED AREA OVER
1.270 μm MIN. NICKEL OVERALL.
3. THE ABOVE 10 CKT IS FOR ILLUSTRATION PURPOSE ONLY.
4. FOR PACKAGING OPTION PLEASE REFER TO THE TABLE.
5. RECOMMENDED PCB THICKNESS 1.60MM.
6. PRODUCT SPECIFICATION: PS-87920-019
7. WAFER TO BE FLAT WITHIN 0.003mm/mm
8. IRREGULAR CIRCUIT CUTOFF WITHIN BREAKAWAY SECTION IS PERMISSIBLE. CUTTING OR CHIPPING OF THE MAIN BODY IS NOT ACCEPTABLE.
9. PARTS ARE NOT STACKABLE ON 2.54 CENTER
10. PACKAGING SPECIFICATION:
TRAY: PK-89990-489
BULK: PK-89990-491



EWR# 1010 & 1021 EEC NO: S2007-0182 DRAWN: SKLIM01 CHKD: CWLAM APPR: KWLEE 2006/09/11 2006/09/12 2006/09/13	QUALITY SYMBOLS ▽=0 ▽=0	GENERAL TOLERANCES (UNLESS SPECIFIED)		DIMENSION STYLE MM ONLY		SCALE NTS	DESIGN UNITS METRIC	THIRD ANGLE PROJECTION			
		4 PLACES ± --- ± ---	3 PLACES ± --- ± ---	2 PLACES ± 0.2 ± ---	1 PLACE ± --- ± ---	ANGULAR ± 3 °	DRAFT WHERE APPLICABLE MUST REMAIN WITHIN DIMENSIONS		DRAWN BY SKLIM01	DATE 2006/08/21	TITLE CUSTOM HEADER C-GRID, SINGLE WAFER HDR, THRU HOLE, VERTICAL, LF
		CHECKED BY CWLAM		DATE 2006/09/04		APPROVED BY KWLEE			DATE 2006/09/04		
		MATERIAL NO. SEE TABLE		DOCUMENT NO. SD-87914-059		MOLEX INCORPORATED			SHEET NO. 1 OF 9		

9 8 7 6 5 4 3 2 1

PART NO FOR TRAY PACKAGING	PART NO FOR BULK PACKAGING	CKT SIZE	PLATING TYPE	DIMENSION					MATING END	SOLDER TAIL	PART NO FOR TRAY PACKAGING	PART NO FOR BULK PACKAGING	CKT SIZE	PLATING TYPE	DIMENSION				
				A	B	F	M	P							A	B	F	M	P
				87914-0401	-----	4	1	5.08							2.54	13.21	8.13	2.79	87914-0204
87914-0402	-----	4	2	5.08	2.54	13.21	8.13	2.79	87914-0205	-----	2	2	2.54	---	11.11	6.10	2.72		
87914-0403	-----	4	3	5.08	2.54	13.21	8.13	2.79	87914-0206	-----	2	3	2.54	---	11.11	6.10	2.72		
87914-0601	-----	6	1	7.62	5.08	13.21	8.13	2.79	87914-0404	-----	4	1	5.08	2.54	11.11	6.10	2.72		
87914-0602	-----	6	2	7.62	5.08	13.21	8.13	2.79	87914-0405	-----	4	2	5.08	2.54	11.11	6.10	2.72		
87914-0603	-----	6	3	7.62	5.08	13.21	8.13	2.79	87914-0406	-----	4	3	5.08	2.54	11.11	6.10	2.72		
87914-0801	-----	8	1	10.16	7.62	13.21	8.13	2.79	87914-0604	-----	6	1	7.62	5.08	11.11	6.10	2.72		
87914-0802	-----	8	2	10.16	7.62	13.21	8.13	2.79	87914-0605	-----	6	2	7.62	5.08	11.11	6.10	2.72		
87914-0803	-----	8	3	10.16	7.62	13.21	8.13	2.79	87914-0606	-----	6	3	7.62	5.08	11.11	6.10	2.72		
87914-1001	-----	10	1	12.70	10.16	13.21	8.13	2.79	87914-0804	-----	8	1	10.16	7.62	11.11	6.10	2.72		
87914-1002	-----	10	2	12.70	10.16	13.21	8.13	2.79	87914-0805	-----	8	2	10.16	7.62	11.11	6.10	2.72		
87914-1003	-----	10	3	12.70	10.16	13.21	8.13	2.79	87914-0806	-----	8	3	10.16	7.62	11.11	6.10	2.72		
									87914-1004	-----	10	1	12.70	10.16	11.11	6.10	2.72		
									87914-1005	-----	10	2	12.70	10.16	11.11	6.10	2.72		
									87914-1006	-----	10	3	12.70	10.16	11.11	6.10	2.72		

EWR# 1010 & 1021 EEC NO: S2007-0182 DRWNSKLM01 CHKDCWLAN APPR:KWLEE 2006/09/11 2006/09/12 2006/09/13	QUALITY SYMBOLS ▽=0 ▽=0	GENERAL TOLERANCES (UNLESS SPECIFIED)		DIMENSION STYLE MM ONLY		SCALE NTS	DESIGN UNITS METRIC	THIRD ANGLE PROJECTION	
		4 PLACES ± ---	± ---	mm	INCH	DRAWN BY SKLIM01	DATE 2006/08/21	TITLE CUSTOM HEADER	
		3 PLACES ± ---	± ---			CHECKED BY CWLAM	DATE 2006/09/04	C-GRID,SINGLE WAFER HDR, THROU HOLE,VERTICAL, LF	
		2 PLACES ± 0.2	± ---			APPROVED BY KWLEE	DATE 2006/09/04	MOLEX INCORPORATED	
		1 PLACE ± ---	± ---	ANGULAR ± 3 °		MATERIAL NO. SEE TABLE	DOCUMENT NO. SD-87914-059	SHEET NO. 2 OF 9	
DRAFT WHERE APPLICABLE MUST REMAIN WITHIN DIMENSIONS				THIS DRAWING CONTAINS INFORMATION THAT IS PROPRIETARY TO MOLEX INCORPORATED AND SHOULD NOT BE USED WITHOUT WRITTEN PERMISSION					

F	PART NO FOR TRAY PACKAGING	PART NO FOR BULK PACKAGING	CKT SIZE	PLATING TYPE	DIMENSION					WATING END	SOLDER TAIL	PART NO FOR TRAY PACKAGING	PART NO FOR BULK PACKAGING	CKT SIZE	PLATING TYPE	DIMENSION					WATING END	SOLDER TAIL													
					A	B	F	M	P							A	B	F	M	P															
					87914-1201	-----	12	1	15.24							12.70	13.21	8.13	2.79	87914-1204			-----	12	1	15.24	12.70	11.11	6.10	2.72	87914-1205	-----	12	2	15.24
87914-1401	-----	14	1	17.78	15.24	13.21	8.13	2.79	87914-1404	-----	14	1	17.78	15.24	11.11	6.10	2.72	87914-1405	-----	14	2	17.78	15.24	11.11	6.10	2.72	87914-1406	-----	14	3	17.78	15.24	11.11	6.10	2.72
87914-1601	-----	16	1	20.32	17.78	13.21	8.13	2.79	87914-1604	-----	16	1	20.32	17.78	11.11	6.10	2.72	87914-1605	-----	16	2	20.32	17.78	11.11	6.10	2.72	87914-1606	-----	16	3	20.32	17.78	11.11	6.10	2.72
87914-1801	-----	18	1	22.86	20.32	13.21	8.13	2.79	87914-1804	-----	18	1	22.86	20.32	11.11	6.10	2.72	87914-1805	-----	18	2	22.86	20.32	11.11	6.10	2.72	87914-1806	-----	18	3	22.86	20.32	11.11	6.10	2.72
87914-2001	-----	20	1	25.40	22.86	13.21	8.13	2.79	87914-2004	-----	20	1	25.40	22.86	11.11	6.10	2.72	87914-2005	-----	20	2	25.40	22.86	11.11	6.10	2.72	87914-2006	-----	20	3	25.40	22.86	11.11	6.10	2.72

EWR# 1010 & 1021 EEC NO: S2007-0182 DRAWN: SKL IM01 CHKD: CWLAM APPR: KWLEE	2006/09/11 2006/09/12 2006/09/13	DESCRIPTION REV A	QUALITY SYMBOLS ▽=0 ▽=0	GENERAL TOLERANCES (UNLESS SPECIFIED) <table border="1"> <tr> <th></th> <th>mm</th> <th>INCH</th> </tr> <tr> <td>4 PLACES</td> <td>± ---</td> <td>± ---</td> </tr> <tr> <td>3 PLACES</td> <td>± ---</td> <td>± ---</td> </tr> <tr> <td>2 PLACES</td> <td>± 0.2</td> <td>± ---</td> </tr> <tr> <td>1 PLACE</td> <td>± ---</td> <td>± ---</td> </tr> </table>		mm	INCH	4 PLACES	± ---	± ---	3 PLACES	± ---	± ---	2 PLACES	± 0.2	± ---	1 PLACE	± ---	± ---	DIMENSION STYLE MM ONLY	SCALE NTS	DESIGN UNITS METRIC	THIRD ANGLE PROJECTION
				mm	INCH																		
4 PLACES	± ---	± ---																					
3 PLACES	± ---	± ---																					
2 PLACES	± 0.2	± ---																					
1 PLACE	± ---	± ---																					
DRAWN BY: SKL IM01 DATE: 2006/08/21 CHECKED BY: CWLAM DATE: 2006/09/04 APPROVED BY: KWLEE DATE: 2006/09/04	TITLE CUSTOM HEADER C-GRID, SINGLE WAFER HDR, THRU HOLE, VERTICAL, LF	MATERIAL NO. SEE TABLE	DOCUMENT NO. SD-87914-059	SHEET NO. 3 OF 9																			

DRAFT WHERE APPLICABLE MUST REMAIN WITHIN DIMENSIONS

THIS DRAWING CONTAINS INFORMATION THAT IS PROPRIETARY TO MOLEX INCORPORATED AND SHOULD NOT BE USED WITHOUT WRITTEN PERMISSION

PART NO FOR TRAY PACKAGING	PART NO FOR BULK PACKAGING	CKT SIZE	PLATING TYPE	DIMENSION					MATING END	SOLDER TAIL	PART NO FOR TRAY PACKAGING	PART NO FOR BULK PACKAGING	CKT SIZE	PLATING TYPE	DIMENSION					MATING END	SOLDER TAIL																																																																																																																																																																																																																																						
				A	B	F	M	P							A	B	F	M	P																																																																																																																																																																																																																																								
				87914-2201	-----	22	1	27.94							25.40	13.21	8.13	2.79	87914-2204			-----	22	1	27.94	25.40	11.11	6.10	2.72	87914-2205	-----	22	2	27.94	25.40	11.11	6.10	2.72	87914-2206	-----	22	3	27.94	25.40	11.11	6.10	2.72	87914-2401	-----	24	1	30.48	27.94	13.21	8.13	2.79	87914-2404	-----	24	1	30.48	27.94	11.11	6.10	2.72	87914-2402	-----	24	2	30.48	27.94	13.21	8.13	2.79	87914-2405	-----	24	2	30.48	27.94	11.11	6.10	2.72	87914-2403	-----	24	3	30.48	27.94	13.21	8.13	2.79	87914-2406	-----	24	3	30.48	27.94	11.11	6.10	2.72	87914-2601	-----	26	1	33.02	30.48	13.21	8.13	2.79	87914-2604	-----	26	1	33.02	30.48	11.11	6.10	2.72	87914-2602	-----	26	2	33.02	30.48	13.21	8.13	2.79	87914-2605	-----	26	2	33.02	30.48	11.11	6.10	2.72	87914-2603	-----	26	3	33.02	30.48	13.21	8.13	2.79	87914-2606	-----	26	3	33.02	30.48	11.11	6.10	2.72	87914-2801	-----	28	1	35.56	33.02	13.21	8.13	2.79	87914-2804	-----	28	1	35.56	33.02	11.11	6.10	2.72	87914-2802	-----	28	2	35.56	33.02	13.21	8.13	2.79	87914-2805	-----	28	2	35.56	33.02	11.11	6.10	2.72	87914-2803	-----	28	3	35.56	33.02	13.21	8.13	2.79	87914-2806	-----	28	3	35.56	33.02	11.11	6.10	2.72	87914-3001	-----	30	1	38.10	35.56	13.21	8.13	2.79	87914-3004	-----	30	1	38.10	35.56	11.11	6.10	2.72	87914-3002	-----	30	2	38.10	35.56	13.21	8.13	2.79	87914-3005	-----	30	2	38.10	35.56	11.11	6.10	2.72	87914-3003	-----	30	3	38.10	35.56

EWR# 1010 & 1021 EEC NO: S2007-0182 DRWNSKLM01 CHKDCWLAN APPR:KWLEE 2006/09/11 2006/09/12 2006/09/13	QUALITY SYMBOLS ▽=0 ▽=0	GENERAL TOLERANCES (UNLESS SPECIFIED)		DIMENSION STYLE MM ONLY		SCALE NTS	DESIGN UNITS METRIC	THIRD ANGLE PROJECTION
		4 PLACES ± --- ± --- 3 PLACES ± --- ± --- 2 PLACES ± 0.2 ± --- 1 PLACE ± --- ± --- ANGULAR ± 3 °	mm INCH SKL IM01 2006/08/21 CWLAM 2006/09/04 KWLEE 2006/09/04	TITLE CUSTOM HEADER C-GRID,SINGLE WAFER HDR, THROU HOLE,VERTICAL, LF	MATERIAL NO. SEE TABLE	DOCUMENT NO. SD-87914-059	SHEET NO. 4 OF 9	
DRAFT WHERE APPLICABLE MUST REMAIN WITHIN DIMENSIONS		THIS DRAWING CONTAINS INFORMATION THAT IS PROPRIETARY TO MOLEX INCORPORATED AND SHOULD NOT BE USED WITHOUT WRITTEN PERMISSION						

PART NO FOR TRAY PACKAGING	PART NO FOR BULK PACKAGING	CKT SIZE	PLATING TYPE	DIMENSION					PART NO FOR TRAY PACKAGING	PART NO FOR BULK PACKAGING	CKT SIZE	PLATING TYPE	DIMENSION													
				A	B	F	M	P					A	B	F	M	P									
				MATING END	SOLDER TAIL	MATING END	SOLDER TAIL	MATING END					SOLDER TAIL													
87914-3201	-----	32	1	40.64	38.10	13.21	8.13	2.79	87914-3204	-----	32	1	40.64	38.10	11.11	6.10	2.72	87914-3205	-----	32	2	40.64	38.10	11.11	6.10	2.72
87914-3202	-----	32	2	40.64	38.10	13.21	8.13	2.79	87914-3206	-----	32	3	40.64	38.10	11.11	6.10	2.72									
87914-3203	-----	32	3	40.64	38.10	13.21	8.13	2.79																		
									87914-3404	-----	34	1	43.18	40.64	11.11	6.10	2.72									
87914-3401	-----	34	1	43.18	40.64	13.21	8.13	2.79	87914-3405	-----	34	2	43.18	40.64	11.11	6.10	2.72									
87914-3402	-----	34	2	43.18	40.64	13.21	8.13	2.79	87914-3406	-----	34	3	43.18	40.64	11.11	6.10	2.72									
87914-3403	-----	34	3	43.18	40.64	13.21	8.13	2.79																		
									87914-3604	-----	36	1	45.72	43.18	11.11	6.10	2.72									
87914-3601	-----	36	1	45.72	43.18	13.21	8.13	2.79	87914-3605	-----	36	2	45.72	43.18	11.11	6.10	2.72									
87914-3602	-----	36	2	45.72	43.18	13.21	8.13	2.79	87914-3606	-----	36	3	45.72	43.18	11.11	6.10	2.72									
87914-3603	-----	36	3	45.72	43.18	13.21	8.13	2.79																		
									87914-3804	-----	38	1	48.26	45.72	11.11	6.10	2.72									
87914-3801	-----	38	1	48.26	45.72	13.21	8.13	2.79	87914-3805	-----	38	2	48.26	45.72	11.11	6.10	2.72									
87914-3802	-----	38	2	48.26	45.72	13.21	8.13	2.79	87914-3806	-----	38	3	48.26	45.72	11.11	6.10	2.72									
87914-3803	-----	38	3	48.26	45.72	13.21	8.13	2.79																		
									87914-4004	-----	40	1	50.80	48.26	11.11	6.10	2.72									
87914-4001	-----	40	1	50.80	48.26	13.21	8.13	2.79	87914-4005	-----	40	2	50.80	48.26	11.11	6.10	2.72									
87914-4002	-----	40	2	50.80	48.26	13.21	8.13	2.79	87914-4006	-----	40	3	50.80	48.26	11.11	6.10	2.72									
87914-4003	-----	40	3	50.80	48.26	13.21	8.13	2.79																		

EWR# 1010 & 1021 EEC NO: S2007-0182 DRAWNSKL IM01 CHKDCWLAN APPR:KWLEE 2006/09/11 2006/09/12 2006/09/13	QUALITY SYMBOLS ▽=0 ▽=0	GENERAL TOLERANCES (UNLESS SPECIFIED) <table border="1"> <tr><th></th><th>mm</th><th>INCH</th></tr> <tr><td>4 PLACES</td><td>± ---</td><td>± ---</td></tr> <tr><td>3 PLACES</td><td>± ---</td><td>± ---</td></tr> <tr><td>2 PLACES</td><td>± 0.2</td><td>± ---</td></tr> <tr><td>1 PLACE</td><td>± ---</td><td>± ---</td></tr> </table>		mm	INCH	4 PLACES	± ---	± ---	3 PLACES	± ---	± ---	2 PLACES	± 0.2	± ---	1 PLACE	± ---	± ---	DIMENSION STYLE MM ONLY	SCALE NTS	DESIGN UNITS METRIC	THIRD ANGLE PROJECTION	DRAWN BY SKL IM01 DATE 2006/08/21	TITLE CUSTOM HEADER C-GRID,SINGLE WAFER HDR, THROU HOLE,VERTICAL, LF
				mm	INCH																		
4 PLACES	± ---	± ---																					
3 PLACES	± ---	± ---																					
2 PLACES	± 0.2	± ---																					
1 PLACE	± ---	± ---																					
CHECKED BY CWLAM DATE 2006/09/04	APPROVED BY KWLEE DATE 2006/09/04	MATERIAL NO. SEE TABLE DOCUMENT NO. SD-87914-059	SHEET NO. 5 OF 9																				
DRAFT WHERE APPLICABLE MUST REMAIN WITHIN DIMENSIONS								THIS DRAWING CONTAINS INFORMATION THAT IS PROPRIETARY TO MOLEX INCORPORATED AND SHOULD NOT BE USED WITHOUT WRITTEN PERMISSION															

F	PART NO FOR TRAY PACKAGING	PART NO FOR BULK PACKAGING	CKT SIZE	PLATING TYPE	DIMENSION					MATING END	SOLDER TAIL	PART NO FOR TRAY PACKAGING	PART NO FOR BULK PACKAGING	CKT SIZE	PLATING TYPE	DIMENSION					MATING END	SOLDER TAIL													
					A	B	F	M	P							A	B	F	M	P															
					87914-4201	-----	42	1	53.34							50.80	13.21	8.13	2.79	87914-4204			-----	42	1	53.34	50.80	11.11	6.10	2.72	87914-4205	-----	42	2	53.34
87914-4401	-----	44	1	55.88	53.34	13.21	8.13	2.79	87914-4404	-----	44	1	55.88	53.34	11.11	6.10	2.72	87914-4405	-----	44	2	55.88	53.34	11.11	6.10	2.72	87914-4406	-----	44	3	55.88	53.34	11.11	6.10	2.72
87914-4601	-----	46	1	58.42	55.88	13.21	8.13	2.79	87914-4604	-----	46	1	58.42	55.88	11.11	6.10	2.72	87914-4605	-----	46	2	58.42	55.88	11.11	6.10	2.72	87914-4606	-----	46	3	58.42	55.88	11.11	6.10	2.72
87914-4801	-----	48	1	60.96	58.42	13.21	8.13	2.79	87914-4804	-----	48	1	60.96	58.42	11.11	6.10	2.72	87914-4805	-----	48	2	60.96	58.42	11.11	6.10	2.72	87914-4806	-----	48	3	60.96	58.42	11.11	6.10	2.72
87914-5001	-----	50	1	63.50	60.96	13.21	8.13	2.79	87914-5004	-----	50	1	63.50	60.96	11.11	6.10	2.72	87914-5005	-----	50	2	63.50	60.96	11.11	6.10	2.72	87914-5006	-----	50	3	63.50	60.96	11.11	6.10	2.72

EWR# 1010 & 1021 EEC NO: S2007-0182 DRAWNSKLM01 CHKDCWLAN APPR:KWLEE 2006/09/11 2006/09/12 2006/09/13	QUALITY SYMBOLS ▽=0 ▽=0	GENERAL TOLERANCES (UNLESS SPECIFIED) <table border="1"> <tr> <th></th> <th>mm</th> <th>INCH</th> </tr> <tr> <td>4 PLACES</td> <td>± ---</td> <td>± ---</td> </tr> <tr> <td>3 PLACES</td> <td>± ---</td> <td>± ---</td> </tr> <tr> <td>2 PLACES</td> <td>± 0.2</td> <td>± ---</td> </tr> <tr> <td>1 PLACE</td> <td>± ---</td> <td>± ---</td> </tr> </table>		mm	INCH	4 PLACES	± ---	± ---	3 PLACES	± ---	± ---	2 PLACES	± 0.2	± ---	1 PLACE	± ---	± ---	DIMENSION STYLE MM ONLY	SCALE NTS	DESIGN UNITS METRIC	THIRD ANGLE PROJECTION	DRAWN BY: SKLIM01 CHECKED BY: CWLAM APPROVED BY: KWLEE DATE: 2006/08/21 DATE: 2006/09/04 DATE: 2006/09/04	TITLE CUSTOM HEADER C-GRID,SINGLE WAFER HDR, THRU HOLE,VERTICAL, LF	MOLEX INCORPORATED	MATERIAL NO. SEE TABLE	DOCUMENT NO. SD-87914-059	SHEET NO. 6 OF 9
				mm	INCH																						
4 PLACES	± ---	± ---																									
3 PLACES	± ---	± ---																									
2 PLACES	± 0.2	± ---																									
1 PLACE	± ---	± ---																									
DRAFT WHERE APPLICABLE MUST REMAIN WITHIN DIMENSIONS	THIS DRAWING CONTAINS INFORMATION THAT IS PROPRIETARY TO MOLEX INCORPORATED AND SHOULD NOT BE USED WITHOUT WRITTEN PERMISSION																										

F	PART NO FOR TRAY PACKAGING	PART NO FOR BULK PACKAGING	CKT SIZE	PLATING TYPE	DIMENSION					MATING END	SOLDER TAIL	PART NO FOR TRAY PACKAGING	PART NO FOR BULK PACKAGING	CKT SIZE	PLATING TYPE	DIMENSION					MATING END	SOLDER TAIL													
					A	B	F	M	P							A	B	F	M	P															
					-----	87914-5201	52	1	66.04							63.50	13.21	8.13	2.79	-----			87914-5204	52	1	66.04	63.50	11.11	6.10	2.72	-----	87914-5205	52	2	66.04
-----	87914-5401	54	1	68.58	66.04	13.21	8.13	2.79	-----	87914-5404	54	1	68.58	66.04	11.11	6.10	2.72	-----	87914-5405	54	2	68.58	66.04	11.11	6.10	2.72	-----	87914-5406	54	3	68.58	66.04	11.11	6.10	2.72
-----	87914-5601	56	1	71.12	68.58	13.21	8.13	2.79	-----	87914-5604	56	1	71.12	68.58	11.11	6.10	2.72	-----	87914-5605	56	2	71.12	68.58	11.11	6.10	2.72	-----	87914-5606	56	3	71.12	68.58	11.11	6.10	2.72
-----	87914-5801	58	1	73.66	71.12	13.21	8.13	2.79	-----	87914-5804	58	1	73.66	71.12	11.11	6.10	2.72	-----	87914-5805	58	2	73.66	71.12	11.11	6.10	2.72	-----	87914-5806	58	3	73.66	71.12	11.11	6.10	2.72
-----	87914-6001	60	1	76.20	73.66	13.21	8.13	2.79	-----	87914-6004	60	1	76.20	73.66	11.11	6.10	2.72	-----	87914-6005	60	2	76.20	73.66	11.11	6.10	2.72	-----	87914-6006	60	3	76.20	73.66	11.11	6.10	2.72

EWR# 1010 & 1021 EEC NO: S2007-0182 DRAWNSKLM01 CHKDCWLAN APPR:KWLEE 2006/09/11 2006/09/12 2006/09/13	QUALITY SYMBOLS ▽=0 ▽=0	GENERAL TOLERANCES (UNLESS SPECIFIED)		DIMENSION STYLE MM ONLY		SCALE NTS	DESIGN UNITS METRIC	THIRD ANGLE PROJECTION
		4 PLACES ± --- ± --- 3 PLACES ± --- ± --- 2 PLACES ± 0.2 ± --- 1 PLACE ± --- ± ---	mm INCH ± --- ± --- ± 0.2 ± --- ± --- ± ---	DRAWN BY SKL IM01	DATE 2006/08/21	TITLE CUSTOM HEADER C-GRID,SINGLE WAFER HDR, THROU HOLE,VERTICAL, LF		
DRAFT WHERE APPLICABLE MUST REMAIN WITHIN DIMENSIONS		APPROVED BY KWLEE		DATE 2006/09/04		MATERIAL NO. SEE TABLE		
				DOCUMENT NO. SD-87914-059		SHEET NO. 7 OF 9		

F	PART NO FOR TRAY PACKAGING	PART NO FOR BULK PACKAGING	CKT SIZE	PLATING TYPE	DIMENSION					MATING END	SOLDER TAIL	PART NO FOR TRAY PACKAGING	PART NO FOR BULK PACKAGING	CKT SIZE	PLATING TYPE	DIMENSION					MATING END	SOLDER TAIL																	
					A	B	F	M	P							A	B	F	M	P																			
					78.74	76.20	13.21	8.13	2.79							78.74	76.20	11.11	6.10	2.72																			
	-----	87914-6201	62	1	78.74	76.20	13.21	8.13	2.79		-----	87914-6204	62	1	78.74	76.20	11.11	6.10	2.72		-----	87914-6205	62	2	78.74	76.20	11.11	6.10	2.72		-----	87914-6206	62	3	78.74	76.20	11.11	6.10	2.72
	-----	87914-6202	62	2	78.74	76.20	13.21	8.13	2.79		-----	87914-6404	64	1	81.28	78.74	11.11	6.10	2.72		-----	87914-6405	64	2	81.28	78.74	11.11	6.10	2.72		-----	87914-6406	64	3	81.28	78.74	11.11	6.10	2.72
	-----	87914-6203	62	3	78.74	76.20	13.21	8.13	2.79		-----	87914-6604	66	1	83.82	81.28	11.11	6.10	2.72		-----	87914-6605	66	2	83.82	81.28	11.11	6.10	2.72		-----	87914-6606	66	3	83.82	81.28	11.11	6.10	2.72
	-----	87914-6401	64	1	81.28	78.74	13.21	8.13	2.79		-----	87914-6804	68	1	86.36	83.82	11.11	6.10	2.72		-----	87914-6805	68	2	86.36	83.82	11.11	6.10	2.72		-----	87914-6806	68	3	86.36	83.82	11.11	6.10	2.72
	-----	87914-6402	64	2	81.28	78.74	13.21	8.13	2.79		-----	87914-7004	70	1	88.90	86.36	11.11	6.10	2.72		-----	87914-7005	70	2	88.90	86.36	11.11	6.10	2.72		-----	87914-7006	70	3	88.90	86.36	11.11	6.10	2.72
	-----	87914-6403	64	3	81.28	78.74	13.21	8.13	2.79		-----	87914-7002	70	2	88.90	86.36	11.11	6.10	2.72		-----	87914-7003	70	3	88.90	86.36	11.11	6.10	2.72		-----								
	-----	87914-6601	66	1	83.82	81.28	13.21	8.13	2.79		-----										-----																		
	-----	87914-6602	66	2	83.82	81.28	13.21	8.13	2.79		-----										-----																		
	-----	87914-6603	66	3	83.82	81.28	13.21	8.13	2.79		-----										-----																		
	-----	87914-6801	68	1	86.36	83.82	13.21	8.13	2.79		-----										-----																		
	-----	87914-6802	68	2	86.36	83.82	13.21	8.13	2.79		-----										-----																		
	-----	87914-6803	68	3	86.36	83.82	13.21	8.13	2.79		-----										-----																		
	-----	87914-7001	70	1	88.90	86.36	13.21	8.13	2.79		-----										-----																		
	-----	87914-7002	70	2	88.90	86.36	13.21	8.13	2.79		-----										-----																		
	-----	87914-7003	70	3	88.90	86.36	13.21	8.13	2.79		-----										-----																		

EWR# 1010 & 1021 EEC NO: S2007-0182 DRAWN SKL IM01 CHKD: CWLAM APPR: KWLEE	QUALITY SYMBOLS ▽=0 ▽=0	GENERAL TOLERANCES (UNLESS SPECIFIED)		DIMENSION STYLE MM ONLY		SCALE NTS	DESIGN UNITS METRIC	THIRD ANGLE PROJECTION	
		4 PLACES ± --- ± --- 3 PLACES ± --- ± --- 2 PLACES ± 0.2 ± --- 1 PLACE ± --- ± ---	mm INCH	DRAWN BY SKL IM01	DATE 2006/08/21	TITLE CUSTOM HEADER C-GRID, SINGLE WAFER HDR, THRU HOLE, VERTICAL, LF			
		ANGULAR ± 3 °		CHECKED BY CWLAM	DATE 2006/09/04	MOLEX INCORPORATED			
		DRAFT WHERE APPLICABLE MUST REMAIN WITHIN DIMENSIONS		APPROVED BY KWLEE	DATE 2006/09/04	MATERIAL NO. SEE TABLE	DOCUMENT NO. SD-87914-059	SHEET NO. 8 OF 9	

PART NO FOR TRAY PACKAGING	PART NO FOR BULK PACKAGING	CKT SIZE	PLATING TYPE	DIMENSION					PART NO FOR TRAY PACKAGING	PART NO FOR BULK PACKAGING	CKT SIZE	PLATING TYPE	DIMENSION				
				A	B	F	M	P					A	B	F	M	P
				MATING END	SOLDER TAIL	MATING END	SOLDER TAIL	MATING END					SOLDER TAIL				
-----	87914-7201	72	1	91.44	88.90	13.21	8.13	2.79	-----	87914-7204	72	1	91.44	88.90	11.11	6.10	2.72
-----	87914-7202	72	2	91.44	88.90	13.21	8.13	2.79	-----	87914-7205	72	2	91.44	88.90	11.11	6.10	2.72
-----	87914-7203	72	3	91.44	88.90	13.21	8.13	2.79	-----	87914-7206	72	3	91.44	88.90	11.11	6.10	2.72
-----	87914-7401	74	1	93.98	91.44	13.21	8.13	2.79	-----	87914-7404	74	1	93.98	91.44	11.11	6.10	2.72
-----	87914-7402	74	2	93.98	91.44	13.21	8.13	2.79	-----	87914-7405	74	2	93.98	91.44	11.11	6.10	2.72
-----	87914-7403	74	3	93.98	91.44	13.21	8.13	2.79	-----	87914-7406	74	3	93.98	91.44	11.11	6.10	2.72
-----	87914-7601	76	1	96.52	93.98	13.21	8.13	2.79	-----	87914-7604	76	1	96.52	93.98	11.11	6.10	2.72
-----	87914-7602	76	2	96.52	93.98	13.21	8.13	2.79	-----	87914-7605	76	2	96.52	93.98	11.11	6.10	2.72
-----	87914-7603	76	3	96.52	93.98	13.21	8.13	2.79	-----	87914-7606	76	3	96.52	93.98	11.11	6.10	2.72
-----	87914-7801	78	1	99.06	96.52	13.21	8.13	2.79	-----	87914-7804	78	1	99.06	96.52	11.11	6.10	2.72
-----	87914-7802	78	2	99.06	96.52	13.21	8.13	2.79	-----	87914-7805	78	2	99.06	96.52	11.11	6.10	2.72
-----	87914-7803	78	3	99.06	96.52	13.21	8.13	2.79	-----	87914-7806	78	3	99.06	96.52	11.11	6.10	2.72
-----	87914-8001	80	1	101.60	99.06	13.21	8.13	2.79	-----	87914-8004	80	1	101.60	99.06	11.11	6.10	2.72
-----	87914-8002	80	2	101.60	99.06	13.21	8.13	2.79	-----	87914-8005	80	2	101.60	99.06	11.11	6.10	2.72
-----	87914-8003	80	3	101.60	99.06	13.21	8.13	2.79	-----	87914-8006	80	3	101.60	99.06	11.11	6.10	2.72

EWR# 1010 & 1021 EEC NO: S2007-0182 DRAWN SKL IM01 CHKD CWLAM APPR KWLEE 2006/09/11 2006/09/12 2006/09/13	DESCRIPTION A	QUALITY SYMBOLS ▽=0 ▽=0	GENERAL TOLERANCES (UNLESS SPECIFIED) <table border="1"> <tr><th></th><th>mm</th><th>INCH</th></tr> <tr><td>4 PLACES</td><td>± .005</td><td>± .0004</td></tr> <tr><td>3 PLACES</td><td>± .008</td><td>± .0003</td></tr> <tr><td>2 PLACES</td><td>± 0.2</td><td>± .0079</td></tr> <tr><td>1 PLACE</td><td>± .010</td><td>± .0004</td></tr> </table>		mm	INCH	4 PLACES	± .005	± .0004	3 PLACES	± .008	± .0003	2 PLACES	± 0.2	± .0079	1 PLACE	± .010	± .0004	DIMENSION STYLE MM ONLY	SCALE NTS	DESIGN UNITS METRIC	THIRD ANGLE PROJECTION
			mm	INCH																		
		4 PLACES	± .005	± .0004																		
		3 PLACES	± .008	± .0003																		
2 PLACES	± 0.2	± .0079																				
1 PLACE	± .010	± .0004																				
DRAWN BY SKL IM01	DATE 2006/08/21	TITLE CUSTOM HEADER C-GRID, SINGLE WAFER HDR, THRU HOLE, VERTICAL, LF																				
CHECKED BY CWLAM	DATE 2006/09/04	MOLEX INCORPORATED																				
APPROVED BY KWLEE	DATE 2006/09/04	MATERIAL NO. SEE TABLE	DOCUMENT NO. SD-87914-059	SHEET NO. 9 OF 9																		

DRAFT WHERE APPLICABLE MUST REMAIN WITHIN DIMENSIONS

THIS DRAWING CONTAINS INFORMATION THAT IS PROPRIETARY TO MOLEX INCORPORATED AND SHOULD NOT BE USED WITHOUT WRITTEN PERMISSION