

Excellent Integrated System Limited

Stocking Distributor

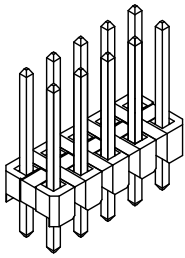
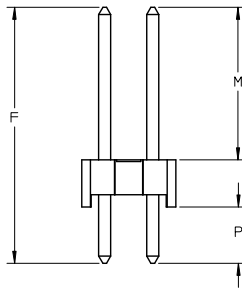
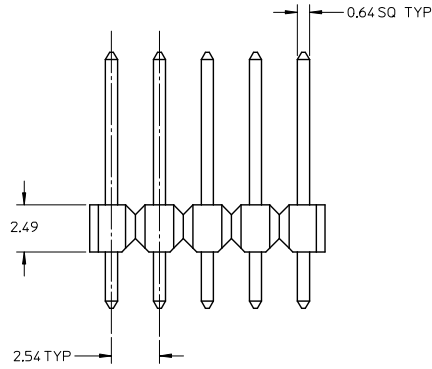
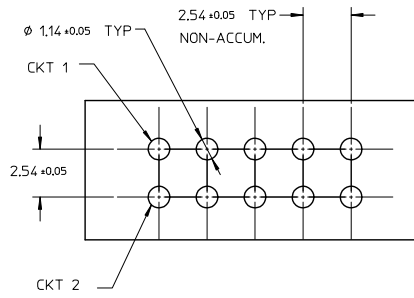
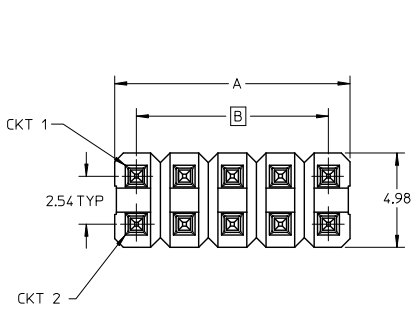
Click to view price, real time Inventory, Delivery & Lifecycle Information:

[Molex Connector Corporation](#)
[0879140827](#)

For any questions, you can email us directly:

sales@integrated-circuit.com

10 9 8 7 6 5 4 3 2 1



NOTES:

1. MATERIAL:

HOUSING: GLASS FILLED, PA6T, UL94V-0,
COLOR: BLACK
TERMINAL: 0.64 SQ PIN, COPPER ALLOY

2. PLATING TYPE:

- (1) : GOLD FLASH OVER
50 MICRO INCHES MIN. NICKEL OVERALL.
- (2) : 1 MICRO INCHES MIN. GOLD PLATE ON CONTACT AND
75 MICRO INCHES MIN. TIN ON SOLDER TAIL OVER
50 MICRO INCHES MIN. NICKEL OVERALL.
- (3) : 10 MICRO INCHES MIN. GOLD PLATE ON CONTACT AND
75 MICRO INCHES MIN. TIN ON SOLDER TAIL OVER
50 MICRO INCHES MIN. NICKEL OVERALL.
- (4) : 15 MICRO INCHES MIN. GOLD PLATE ON CONTACT AND
75 MICRO INCHES MIN. TIN ON SOLDER TAIL OVER
50 MICRO INCHES MIN. NICKEL OVERALL.
- (5) : 30 MICRO INCHES MIN. GOLD PLATE ON CONTACT AND
75 MICRO INCHES MIN. TIN ON SOLDER TAIL OVER
50 MICRO INCHES MIN. NICKEL OVERALL.
- (6) : 100 MICRO INCHES MIN. TIN IN SELECTED AREA OVER
50 MICRO INCHES MIN. NICKEL OVERALL.

3. PIN PUSHOUT FORCE: 1KG MIN IN EITHER DIRECTION

4. THE ABOVE 10 CKT IS FOR ILLUSTRATION PURPOSE ONLY.

5. FOR PACKAGING OPTION PLEASE REFER TO THE TABLE.

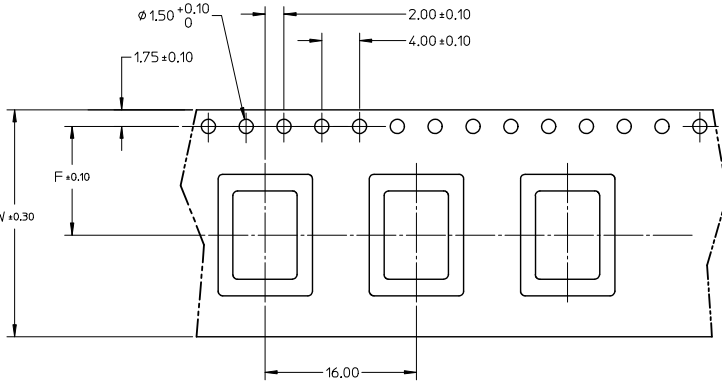
| | | | | | | | | | | |
|--|--|---|---|--|----------------------------|------------------------------|--|------------------------|------------------------|--|
| CN-0157, +879140629 EC NO. S2012-0935 DRAWN AT SEE CHKD:SKANG APPR:MLONG | 2012/06/13 2012/10/04 2012/10/05 | QUALITY SYMBOLS | GENERAL TOLERANCES (UNLESS SPECIFIED) | | DIMENSION STYLE MM ONLY | | SCALE NTS | DESIGN UNITS METRIC | THIRD ANGLE PROJECTION | |
| | | $\sqrt{\text{R}}=0$ $\sqrt{\text{S}}=0$ $\sqrt{\text{T}}=0$ | 4 PLACES \pm --- \pm --- 3 PLACES \pm --- \pm --- 2 PLACES ± 0.20 \pm --- \pm --- 1 PLACE \pm --- \pm --- 0 PLACE \pm \pm | mm INCH | DRAWN BY SKL1M01 | DATE 2005/09/07 | TITLE SALES DRAWING 2.54MM DUAL ROW HEADER WITH STANDOFF, T/H | | | |
| | | ANGULAR $\pm 3^\circ$ DRAFT WHERE APPLICABLE MUST REMAIN WITHIN DIMENSIONS | MATERIAL NO. SEE TABLE | APPROVED BY MLONG | DATE 2010/09/06 | DOCUMENT NO. SD-87914-022 | | SHEET NO. 1 OF 3 | | |
| | | REV A6 | SIZE A3 | THIS DRAWING CONTAINS INFORMATION THAT IS PROPRIETARY TO MOLEX INCORPORATED AND SHOULD NOT BE USED WITHOUT WRITTEN PERMISSION | | | | | | |

9 8 7 6 5 4 3 2 1

10 9 8 7 6 5 4 3 2 1

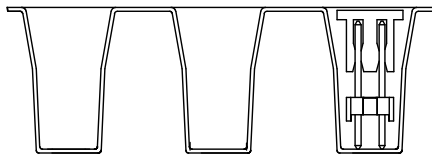
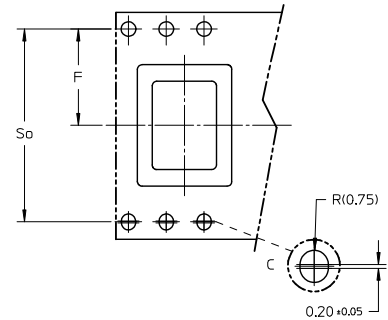
FOR TAPE WIDTH WITH SINGLE ROW SPROCKET HOLES.

| P/N | CKT SIZE | F | So | W | QTY/ REEL |
|------------|----------|-------|----|-------|-----------|
| 87914-0627 | 06 | 11.50 | - | 24.00 | 250 |
| 87914-0827 | 08 | 11.50 | - | 24.00 | 250 |
| 87914-0828 | 08 | 11.50 | - | 24.00 | TBA |



CUSTOMER
PULL OUT DIRECTION

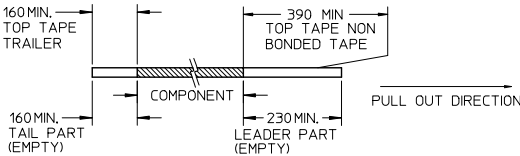
FOR TAPE WIDTH WITH 2 ROWS OF SPROCKET HOLES.



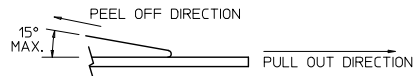
VIEW OF PART ORIENTATION
IN TAPE & REEL

NOTES:

1. LEADER AND TRAILER TAPE



2. PEELING OFF FORCE OF THE TOP TAPE: 20 - 80gf.
(PEELING DIRECTION AS SHOWN IN FOLLOWING FIGURE)



3. TAPE AND REEL SPECIFICATION IS AS PER EIA-481.

4. THE TAPE IS TREATED FOR ANTI-STATIC.

| REV | DESCRIPTION | QUALITY SYMBOLS | GENERAL TOLERANCES (UNLESS SPECIFIED) | | DIMENSION STYLE | | SCALE | DESIGN UNITS | THIRD ANGLE PROJECTION |
|-----|---|--|---|--|--|---|-------------------|--------------|------------------------|
| | | | mm | INCH | MM ONLY | DATE | | | |
| A6 | CN-0157, +879140629 EC NO: S2012-0935 DRAWN/ISSUE: 2012/06/13 CHKD/SKANG 2012/10/04 APPR:MLONG 2012/10/05 | $\nabla=0$ $\nabla=0$ $\nabla=0$ | 4 PLACES \pm --- \pm --- 3 PLACES \pm --- \pm --- 2 PLACES ± 0.20 \pm --- 1 PLACE \pm --- \pm --- 0 PLACE \pm \pm | DRAWN BY: SKLIM01 CHECKED BY: BOKOK APPROVED BY: MLONG DATE: 2005/09/07 DATE: 2005/09/17 DATE: 2010/09/06 | TITLE: SALES DRAWING 2.54MM DUAL ROW HEADER WITH STANDOFF, T/H molex | MATERIAL NO.: SEE TABLE DOCUMENT NO.: SD-87914-022 | SHEET NO.: 2 OF 3 | | |

9 8 7 6 5 4 3 2 1



Distributor of Molex Connector Corporation: Excellent Integrated System Limited

Datasheet of 0879140827 - 2.54MM DRSW HDR TH 2.5SNLF 8CKT

Contact us: sales@integrated-circuit.com Website: www.integrated-circuit.com

| PART NO FOR TRAY PACKAGING | PART NO. FOR TUBE WITHOUT CAP PACKAGING | PART NO. FOR TUBE WITH CAP PACKAGING | PART NO. FOR TAPE & REEL WITHOUT CAP PACKAGING | PART NO. FOR TAPE & REEL WITH CAP PACKAGING | CKT SIZE | VOID POSITION | PLATING TYPE | DIMENSIONS | | | | | |
|----------------------------|---|--------------------------------------|--|---|----------|---------------|--------------|------------|-------|-------|-------|------|-------|
| | | | | | | | | A | B | F | M | P | G |
| 87914-0109 | ----- | ----- | ----- | ----- | 50 | ----- | 3 | 63.50 | 60.96 | 12.15 | 6.98 | 2.68 | - |
| ----- | ----- | ----- | ----- | 87914-0627 | 6 | ----- | 6 | 7.62 | 5.08 | 13.55 | 8.08 | 2.98 | 14.70 |
| 87914-0629 | ----- | ----- | ----- | ----- | 6 | ----- | 6 | 10.16 | 7.62 | 16.26 | 10.82 | 2.95 | - |
| ----- | ----- | ----- | ----- | 87914-0827 | 8 | ----- | 6 | 10.16 | 7.62 | 13.55 | 8.08 | 2.98 | 14.70 |
| ----- | ----- | ----- | ----- | 87914-0828 | 8 | ----- | 6 | 10.16 | 7.62 | 17.53 | 12.80 | 2.24 | 18.68 |
| 87914-3638 | ----- | ----- | ----- | ----- | 36 | ----- | 6 | 45.72 | 43.18 | 12.10 | 7.01 | 2.60 | - |
| 87914-5031 | ----- | ----- | ----- | ----- | 50 | ----- | 1 | 63.50 | 60.96 | 12.15 | 6.98 | 2.68 | - |
| 87914-5032 | ----- | ----- | ----- | ----- | 50 | ----- | 2 | 63.50 | 60.96 | 12.15 | 6.98 | 2.68 | - |
| 87914-5034 | ----- | ----- | ----- | ----- | 50 | ----- | 4 | 63.50 | 60.96 | 12.15 | 6.98 | 2.68 | - |
| 87914-5035 | ----- | ----- | ----- | ----- | 50 | ----- | 5 | 63.50 | 60.96 | 12.15 | 6.98 | 2.68 | - |
| 87914-5036 | ----- | ----- | ----- | ----- | 50 | ----- | 6 | 63.50 | 60.96 | 12.15 | 6.98 | 2.68 | - |

| | | | | | | | |
|---|--|---|-----------------|---------------|--|--|------------------------|
| CN-0157, +879140629 EC NO: S2012-0935 DRAWN BY: DRWALISEE CHKD: SKANG APPR: MLONG 2012/06/13 2012/10/04 2012/10/05 | QUALITY SYMBOLS | GENERAL TOLERANCES (UNLESS SPECIFIED) | DIMENSION STYLE | SCALE | DESIGN UNITS | THIRD ANGLE PROJECTION | |
| | $\nabla=0$ $\nabla=0$ $\nabla=0$ | mm INCH 4 PLACES ± --- ± --- 3 PLACES ± --- ± --- 2 PLACES ± 0.20 ± --- 1 PLACE ± --- ± --- 0 PLACE ± ± | MM ONLY | NTS METRIC | DRAWN BY: SKL I M01 CHECKED BY: BOKOK APPROVED BY: MLONG DATE: 2005/09/07 DATE: 2005/09/17 DATE: 2010/09/06 | TITLE SALES DRAWING 2.54MM DUAL ROW HEADER WITH STANDOFF, T/H molex | THIRD ANGLE PROJECTION |
| | DESCRIPTION | ANGULAR ± 3 ° | MATERIAL NO. | DOCUMENT NO. | SHEET NO. | | |
| | REV: A6 | DRAFT WHERE APPLICABLE MUST REMAIN WITHIN DIMENSIONS | SEE TABLE | SD-87914-022 | 3 OF 3 | | |

b_frame_A3_P_AM_T
Rev. G 2012/01/11