

Excellent Integrated System Limited

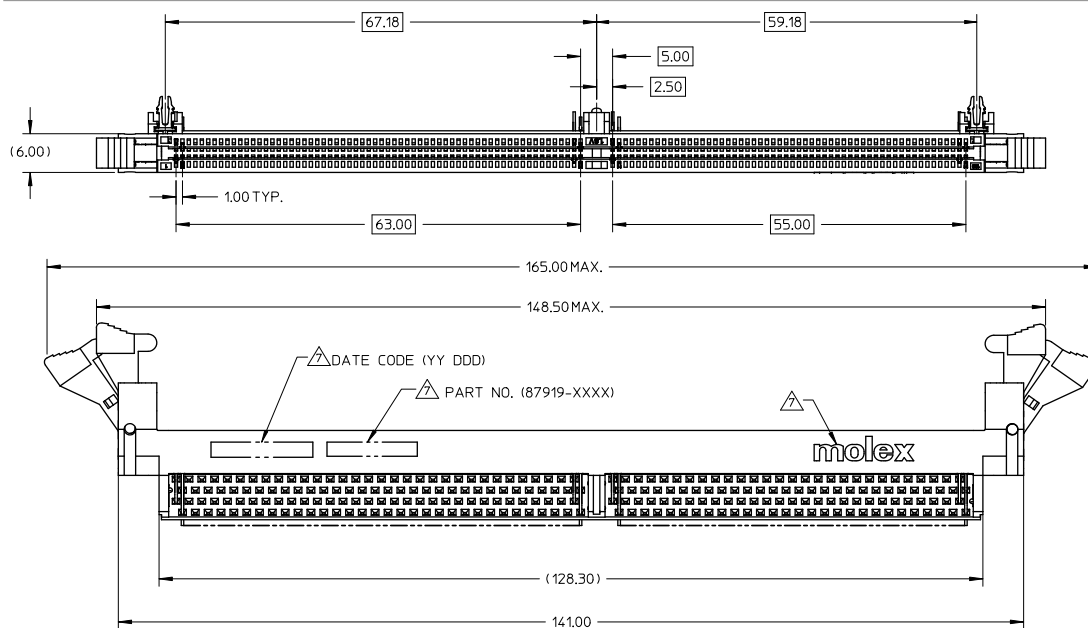
Stocking Distributor

Click to view price, real time Inventory, Delivery & Lifecycle Information:

[Molex Connector Corporation](#)
[0879191001](#)

For any questions, you can email us directly:

sales@integrated-circuit.com



NOTES:

1. MATERIAL : HOUSING & BASEPLATE.

- LCP, GLASS FILLED, UL94-V0, BLACK.

LATCH.

- HIGH TEMP. NYLON, GLASS FILLED, UL94-V0, NATURAL (OFF WHITE).

TERMINALS & FORKLICK - COPPER ALLOY.

2. PLATING : CONTACT AREA - SEE TABLE ON SHEET 5.

SOLDERTAIL - SEE TABLE ON SHEET 5.



3. CARD SLOT ACCEPTS 1.27+/-0.10MM MODULE THICKNESS (MEASURED OVER PC PADS).

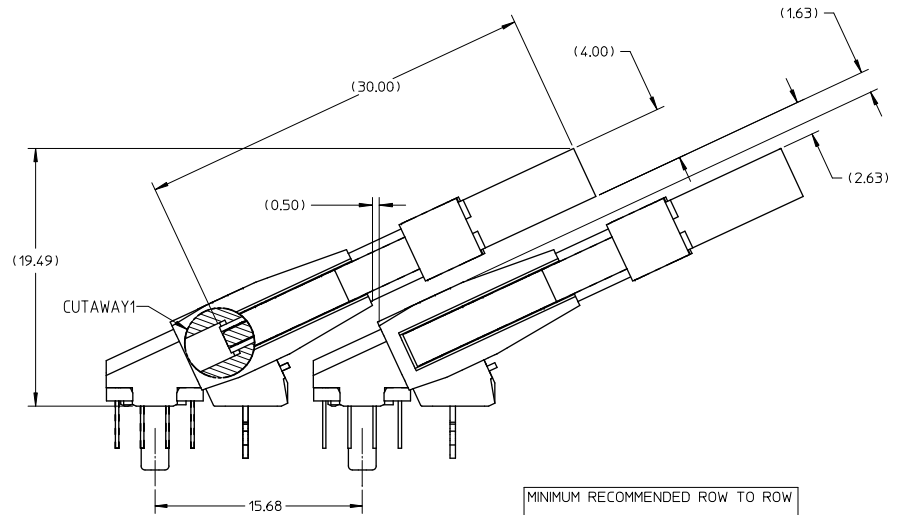
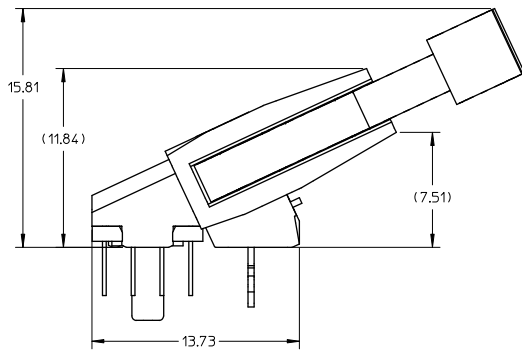
4. REFER TO PRODUCT SPECIFICATION, PS-87919-001 FOR PERFORMANCE SPECIFICATION.

5. RECOMMENDED MODULE CARD LAYOUT SHALL BE AS PER JEDEC MO-237.

6. PRODUCT SHALL BE PACKED IN TRAY. PLS REFER TO SHEET 6.

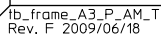
MOLEX LOGO, DATE & PART NUMBER INDICATED ON HOUSING.

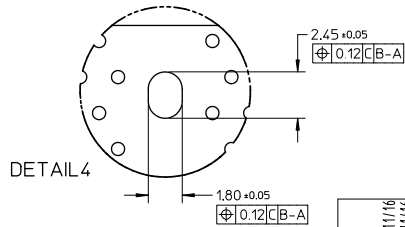
ADDED OPTION EC NO: S2010-0393 2009/11/16 DRWNCCTH 2009/11/16 CHKDCGTAN 2009/11/17 APPR:SHEN	DESCRIPTION REV	QUALITY SYMBOLS <div>▽=0</div> <div>▽=0</div> <div>▽=0</div>	GENERAL TOLERANCES (UNLESS SPECIFIED)		DIMENSION STYLE MM ONLY		SCALE NTS	DESIGN UNITS METRIC	 THIRD ANGLE PROJECTION	
				mm	INCH	DRAWN BY JTAN	DATE 2004/05/26	TITLE DDR2 DIMM, 1.00MM PITCH 240 CKTS, 25 DEG. REVERSE ANGLE <div> MOLEX INCORPORATED</div>	DOCUMENT NO. SD-87919-001	SHEET NO. 1 OF 6
			4 PLACES	± ---	± ---	CHECKED BY MLONG	DATE 2004/06/11			
			3 PLACES	± ---	± ---	APPROVED BY GGLEE	DATE 2004/06/11			
			2 PLACES	± 0.25	± ---					
		1 PLACE		± ---	± ---					
		ANGULAR		± 5 °						
		DRAFT WHERE APPLICABLE		SEE TABLE						
		MUST REMAIN WITHIN DIMENSIONS		SIZE A3		THIS DRAWING CONTAINS INFORMATION THAT IS PROPRIETARY TO MOLEX INCORPORATED AND SHOULD NOT BE USED WITHOUT WRITTEN PERMISSION				



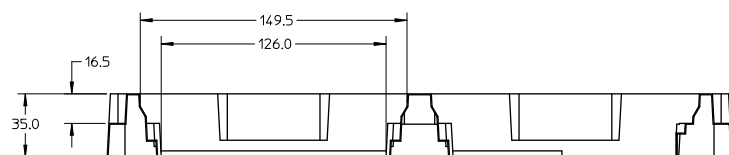
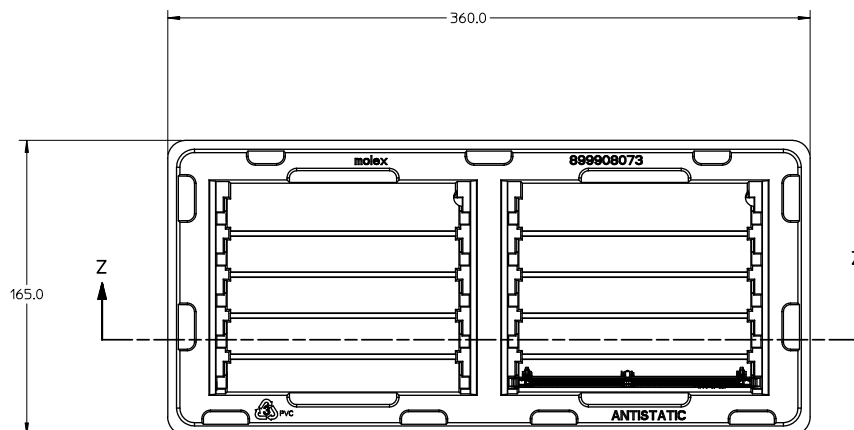
MINIMUM RECOMMENDED ROW TO ROW
SPACING WHEN USING 4.00MM THICK
MODULE.

ADDED OPTION EC NO: S2010-0393 DRAWN: CTEH CHECKED: TAN APPR: SHEN	2009/11/16 2009/11/16 2009/11/17	DESCRIPTION	QUALITY SYMBOLS	GENERAL TOLERANCES (UNLESS SPECIFIED)		DIMENSION STYLE MM ONLY		SCALE NTS	DESIGN UNITS METRIC	THIRD ANGLE PROJECTION			
					mm	INCH	DRAWN BY JTAN	DATE 2004/05/26	TITLE DDR2 DIMM, 1.00MM PITCH 240 CKTS, 25 DEG. REVERSE ANGLE				
				4 PLACES	± ---	± ---	CHECKED BY MLONG	DATE 2004/06/11					
				2 PLACES	± 0.25	± ---	APPROVED BY GGLEE	DATE 2004/06/11					
				1 PLACE	± ---	± ---	ANGULAR ± 5 °		MOLEX INCORPORATED				
				DRAFT WHERE APPLICABLE MUST REMAIN WITHIN DIMENSIONS		MATERIAL NO. SEE TABLE		DOCUMENT NO. SD-87919-001		SHEET NO. 2 OF 6			
						SIZE A3		THIS DRAWING CONTAINS INFORMATION THAT IS PROPRIETARY TO MOLEX INCORPORATED AND SHOULD NOT BE USED WITHOUT WRITTEN PERMISSION					





fb_frame_A3_P_AM_T
Rev. F 2009/06/18








SECTION Z-Z

NOTE:

1. CAVITY QTY : 2 X 5 = 10

ADDED OPTION EC NO. S2010-0393 DRWNC:CTEH CHKD:GTAN APPR:SHEN	2009/11/16 2009/11/16 2009/11/17	QUALITY SYMBOLS	GENERAL TOLERANCES (UNLESS SPECIFIED)			DIMENSION STYLE MM ONLY		SCALE NTS	DESIGN UNITS METRIC	THIRD ANGLE PROJECTION
				mm	INCH	DRAWN BY JTAN	DATE 2004/05/26	TITLE DDR2 DIMM, 1.00MM PITCH 240 CKTS, 25 DEG. REVERSE ANGLE MOLEX INCORPORATED		
			4 PLACES	± ---	± ---	CHECKED BY MLONG	DATE 2004/06/11			
			2 PLACES	± 0.25	± ---	APPROVED BY GGLEE	DATE 2004/06/11			
			1 PLACE	± ---	± ---					
			ANGULAR ± 5 °			MATERIAL NO.		DOCUMENT NO.	SHEET NO.	
			DRAFT WHERE APPLICABLE MUST REMAIN WITHIN DIMENSIONS			SEE TABLE		SD-87919-001	5 OF 6	
A7						SIZE A3 THIS DRAWING CONTAINS INFORMATION THAT IS PROPRIETARY TO MOLEX INCORPORATED AND SHOULD NOT BE USED WITHOUT WRITTEN PERMISSION				

PART NO.	VOLTAGE KEY	DIM 'P'	DIM 'Q'	RECOMMENDED PCB THICKNESS	CONTACT AREA PLATING	SOLDERTAIL PLATING	LATCH COLOR
87919-0001	1.8V	2.79	3.18	1.57	0.76uM/ 30u" GOLD OVER 1.27uM/ 50u" MIN NICKEL	2.54uM/ 100u" MIN. TIN OVER 1.27uM/ 50u" MIN NICKEL	NATURAL
87919-0011		3.18	4.83	2.36			
87919-1001		4.00		3.18			
87919-1002		4.60	3.18	3.50			
87919-0101		2.79		3.18	1.57		
87919-0111		3.18		4.83	2.36		
87919-0333							

ADDED OPTION EC NO. S2010-0393 DRAWN: CTEH CHKD: GTAN APPR: SHEN	2009/11/16 2009/11/16 2009/11/17	DESCRIPTION REV	QUALITY SYMBOLS	GENERAL TOLERANCES (UNLESS SPECIFIED)		DIMENSION STYLE MM ONLY		SCALE NTS	DESIGN UNITS METRIC	 THIRD ANGLE PROJECTION
	 =0			mm	INCH	DRAWN BY JTAN	DATE 2004/05/26	TITLE DDR2 DIMM, 1.00MM PITCH 240 CKTS, 25 DEG. REVERSE ANGLE		
	 =0		4 PLACES ± --- ± ---	3 PLACES ± --- ± ---	CHECKED BY MLONG	DATE 2004/06/11	 MOLEX INCORPORATED			
	 =0		2 PLACES ± 0.25 ± ---	1 PLACE ± --- ± ---	APPROVED BY GGLEE	DATE 2004/06/11				
	ANGULAR ± 5 °		MATERIAL NO.		DOCUMENT NO.					
DRAFT WHERE APPLICABLE MUST REMAIN WITHIN DIMENSIONS				SEE TABLE			SD-87919-001		SHEET NO. 6 OF 6	
A7				SIZE A3	THIS DRAWING CONTAINS INFORMATION THAT IS PROPRIETARY TO MOLEX INCORPORATED AND SHOULD NOT BE USED WITHOUT WRITTEN PERMISSION					