

## Excellent Integrated System Limited

Stocking Distributor

Click to view price, real time Inventory, Delivery & Lifecycle Information:

[Molex Connector Corporation](#)

[0894001220](#)

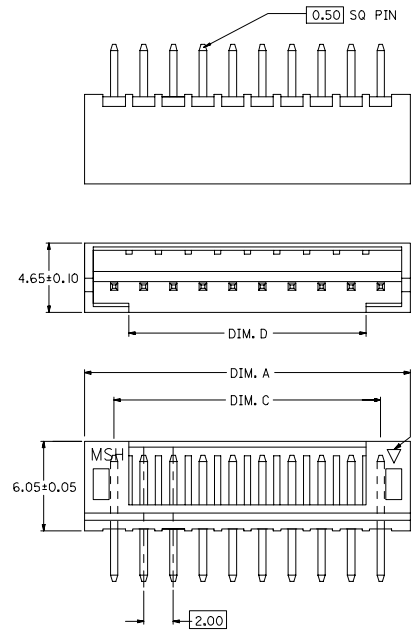
For any questions, you can email us directly:

[sales@integrated-circuit.com](mailto:sales@integrated-circuit.com)

10 9 8 7 6 5 4 3 2 1

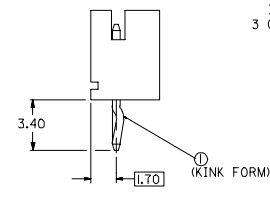
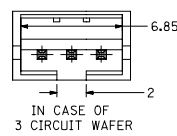
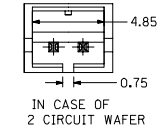
F  
E  
D  
C  
B  
A

F  
E  
D  
C  
B  
A



**PART NO. LEGEND**  
89400 - \*\* 2

**CKT SIZE** ——— **COLOR OPTION**  
0 - NATURAL (WHITE)  
1 - BLACK  
2 - RED  
3 - YELLOW  
4 - BLUE  
6 - GREEN



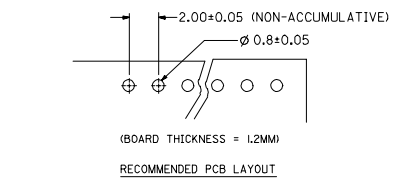
CIRCUITS	ORDER NO.	DIM. C	DIM. D	DIM. A
2	89400-022*	2.00	0.75	6.00
3	89400-032*	4.00	2.00	8.00
4	89400-042*	6.00	4.00	10.00
5	89400-052*	8.00	6.00	12.00
6	89400-062*	10.00	8.00	14.00
7	89400-072*	12.00	10.00	16.00
8	89400-082*	14.00	12.00	18.00
9	89400-092*	16.00	14.00	20.00
10	89400-102*	18.00	16.00	22.00
11	89400-112*	20.00	18.00	24.00
12	89400-122*	22.00	20.00	26.00
13	89400-132*	24.00	22.00	28.00
14	89400-142*	26.00	24.00	30.00
15	89400-152*	28.00	26.00	32.00
16	89400-162*	30.00	28.00	34.00

KINK TO BE APPLIED AS FOLLO

CKT NO. CKT	KINK TO BE APPLIED AS FOLLO							
	1	2	3	4	5	N-2	N-1	N
6 CKT (OR OVER ALL)	⓪	—	—	—	—	—	—	⓪
5 CKT	⓪	—	—	⓪	—	—	—	—
4 CKT	⓪	—	⓪	—	—	—	—	—
3 CKT	⓪	⓪	—	—	—	—	—	—
2 CKT	⓪	⓪	—	—	—	—	—	—

**NOTE:**

- MATERIALS : HOUSING - NYLON (PA66), UL94 V-0  
COLOR : SEE OPTION  
TERMINAL - BRASS
- FINISHES : TERMINAL - TN THICKNESS 127-254 MICROMETER OVER  
NICKEL THICKNESS 254 MICROMETER MIN OVERALL  
COPPER THICKNESS 107 MICROMETER MIN OVERALL
- PRODUCT SPECIFICATION : PS-87369-0002
- BULK PACK IN PVC BAG WITH 1000 PCS PER BAG.



NEW RELEASE EC NO: SH2006-0288 2005/12/07 DR/ANJALI CHK/DHARVEY APPR/GHEN 2005/12/09	QUALITY SYMBOLS ▽=0 ▽=0	GENERAL TOLERANCES (UNLESS SPECIFIED)		DIMENSION STYLE IN/MM		SCALE	DESIGN UNITS INCH	THIRD ANGLE PROJECTION	
		4 PLACES ± --- ± ---	mm	INCH	DRAWN BY	DATE	TITLE	MOLEX INCORPORATED	SHEET NO.
		3 PLACES ± --- ± ---	2.00MM WIRE-BOARD STRAIGHT HEADER WITH COINING	SAM SHIN	1998/10/22				
		2 PLACES ± 0.25 ± ---	1 PLACE ± 0.25 ± ---	ANGULAR ± 2 °	CHECKED BY	DATE	MATERIAL NO.	DOCUMENT NO.	1 OF 1
DRAFT WHERE APPLICABLE MUST REMAIN WITHIN DIMENSIONS		SEE TABLE		SD-89400-**-2*		THIS DRAWING CONTAINS INFORMATION THAT IS PROPRIETARY TO MOLEX INCORPORATED AND SHOULD NOT BE USED WITHOUT WRITTEN PERMISSION			

9 8 7 6 5 4 3 2 1