

Excellent Integrated System Limited

Stocking Distributor

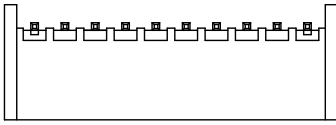
Click to view price, real time Inventory, Delivery & Lifecycle Information:

[Molex Connector Corporation](#)
[0894010610](#)

For any questions, you can email us directly:

sales@integrated-circuit.com

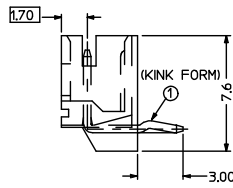
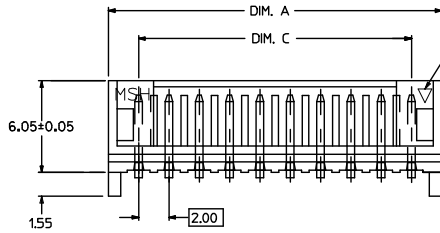
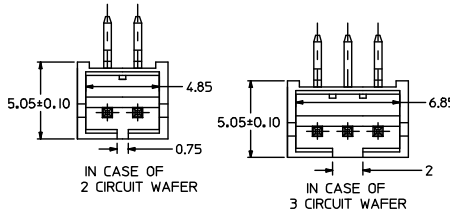
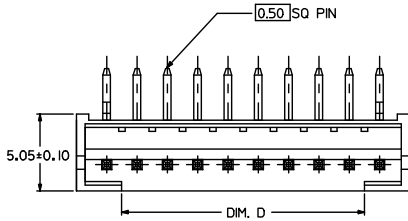
10 9 8 7 6 5 4 3 2 1



KINK TO BE APPLIED AS FOLLOW

CKT NO. CKT	1	2	3	4	5	N-2	N-1	N
6 CKT	①	—	—	—	—	—	—	①
5 CKT	①	—	—	—	①	—	—	—
4 CKT	①	—	—	①	—	—	—	—
3 CKT	①	—	①	—	—	—	—	—
2 CKT	①	①	—	—	—	—	—	—

CIRCUITS	ORDER NO.	DIM. C	DIM. D	DIM. A	REMARK
2	89401-021*	2.00	0.75	6.00	
3	89401-031*	4.00	2.00	8.00	
4	89401-041*	6.00	4.00	10.00	
5	89401-051*	8.00	6.00	12.00	
	89401-0520				VOID PIN 4
6	89401-061*	10.00	8.00	14.00	
7	89401-071*	12.00	10.00	16.00	
8	89401-081*	14.00	12.00	18.00	
9	89401-091*	16.00	14.00	20.00	
10	89401-101*	18.00	16.00	22.00	
	89401-1020				VOID PIN 7
11	89401-111*	20.00	18.00	24.00	
12	89401-121*	22.00	20.00	26.00	
13	89401-131*	24.00	22.00	28.00	
14	89401-141*	26.00	24.00	30.00	
15	89401-151*	28.00	26.00	32.00	
16	89401-161*	30.00	28.00	34.00	

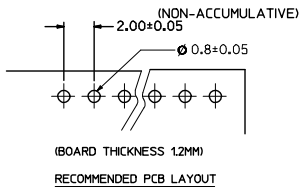


PART NO. LEGEND
89401 - ** 1(2) *

CKT SIZE

COLOR OPTION
0 - NATURAL (WHITE)
2 - RED
3 - YELLOW
4 - BLUE
6 - GREEN
7 - BLACK

- NOTE:
1. PRODUCT SPEC. PS-87369-0001 APPLIES.
 2. BULK PACK IN PVC BAG WITH 1000 PCS PER BAG.
 3. MATERIAL :
HOUSING - NYLON 66 94V0. COLOR: SEE OPTION
TERMINAL - BRASS
 4. FINISH :
TERMINAL - TIN THICKNESS 1.27-2.54 MICROMETER OVER
NICKEL THICKNESS 2.54 MICROMETER MIN OVERALL
COPPER THICKNESS 1.07 MICROMETER MIN OVERALL



NEW RELEASE EC NO: SH2006-0287 DR: W/SHI 2005/12/06 CHK: HARVEY 2005/12/08 APPR: GCHEN 2005/12/09 G	QUALITY SYMBOLS ▽=0 ▽=0	GENERAL TOLERANCES (UNLESS SPECIFIED)		DIMENSION STYLE MM ONLY	SCALE 1:4	DESIGN UNITS METRIC	THIRD ANGLE PROJECTION	
		4 PLACES ± --- ± --- 3 PLACES ± --- ± --- 2 PLACES ± 0.25 ± --- 1 PLACE ± 0.25 ± --- ANGULAR ± 3°	DRAWN BY SAM SHIN	DATE 1998/10/22	TITLE 2.0MM WIRE-BOARD RIGHT ANGLE HEADER			
		DRAFT WHERE APPLICABLE MUST REMAIN WITHIN DIMENSIONS	APPROVED BY	DATE	MOLEX INCORPORATED			
		MATERIAL NO. SEE CHART	DOCUMENT NO. SD-89401-**-1*	SHEET NO. 1 OF 1	THIS DRAWING CONTAINS INFORMATION THAT IS PROPRIETARY TO MOLEX INCORPORATED AND SHOULD NOT BE USED WITHOUT WRITTEN PERMISSION			

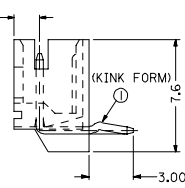
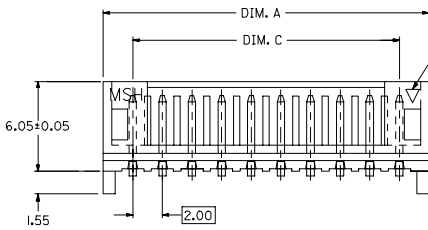
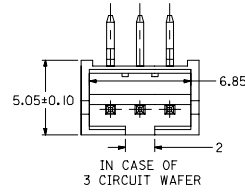
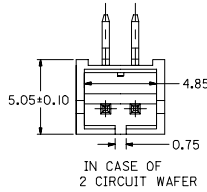
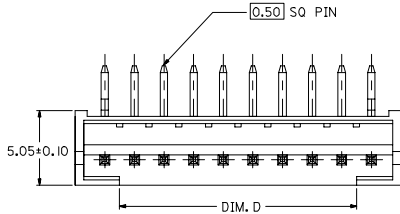
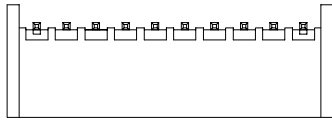
9 8 7 6 5 4 3 2 1

10 9 8 7 6 5 4 3 2 1

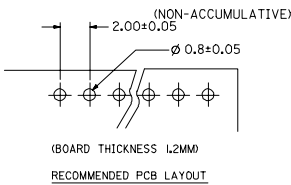
KINK TO BE APPLIED AS FOLLOW,

CKT NO.	1	2	3	4	5	N-2	N-1	N
6 CKT	①	—	—	—	—	—	—	①
5 CKT	①	—	—	—	①	—	—	—
4 CKT	①	—	—	①	—	—	—	—
3 CKT	①	—	①	—	—	—	—	—
2 CKT	①	①	—	—	—	—	—	—

CIRCUITS	ORDER NO.	DIM. C	DIM. D	DIM. A
2	89401-0210	2.00	0.75	6.00
3	89401-0310	4.00	2.00	8.00
4	89401-0410	6.00	4.00	10.00
5	89401-0510	8.00	6.00	12.00
6	89401-0610	10.00	8.00	14.00
7	89401-0710	12.00	10.00	16.00
8	89401-0810	14.00	12.00	18.00
9	89401-0910	16.00	14.00	20.00
10	89401-1010	18.00	16.00	22.00
11	89401-1110	20.00	18.00	24.00
12	89401-1210	22.00	20.00	26.00
13	89401-1310	24.00	22.00	28.00
14	89401-1410	26.00	24.00	30.00
15	89401-1510	28.00	26.00	32.00



NOTE:
1. PRODUCT SPEC, PS-87369-0001 APPLIES.
2. BULK PACK IN PVC BAG WITH 1000 PCS PER BAG.
3. MATERIAL :
HOUSING - NYLON 66 94V0, NATURAL
TERMINAL - TIN PLATED NICKEL



(BOARD THICKNESS 1.2MM)
RECOMMENDED PCB LAYOUT

NEW RELEASE EC NO: SH2006-0287 2005/12/08 DR/ANJALI CHK/DHARNEY APPR/GHEN 2005/12/09	QUALITY SYMBOLS ▽=0 ▽=0	GENERAL TOLERANCES (UNLESS SPECIFIED)		DIMENSION STYLE IN/MM	SCALE	DESIGN UNITS INCH	THIRD ANGLE PROJECTION	
		4 PLACES ± --- ± --- 3 PLACES ± --- ± --- 2 PLACES ± --- ± --- 1 PLACE ± --- ± ---	mm INCH	DRAWN BY SAM SHIN	DATE 1998/10/22	TITLE 2.0MM WIRE TO BOARD RIGHT ANGLE		
		ANGULAR ± ---°		APPROVED BY	DATE	MOLEX INCORPORATED		
		DRAFT WHERE APPLICABLE MUST REMAIN WITHIN DIMENSIONS		MATERIAL NO. SEE TABLE	DOCUMENT NO. SD-89401-***10	SHEET NO. 1 OF 1		

9 8 7 6 5 4 3 2 1