

Excellent Integrated System Limited

Stocking Distributor

Click to view price, real time Inventory, Delivery & Lifecycle Information:

[Molex Connector Corporation](#)
[0905842312](#)

For any questions, you can email us directly:

sales@integrated-circuit.com

90584	--*26	26	(35.53)/1.399	(31.75)/1.250	(30.48)/1.200
	--*24	24	(32.99)/1.299	(29.21)/1.150	(27.94)/1.100
	--*22	22	(30.45)/1.199	(26.67)/1.050	(25.40)/1.000
	--*20	20	(27.91)/1.099	(24.13)/.950	(22.86)/.900
	--*18	18	(25.37)/.999	(21.59)/.850	(20.32)/.800
	--*16	16	(22.83)/.899	(19.05)/.750	(17.78)/.700
	--*14	14	(20.29)/.799	(16.51)/.650	(15.24)/.600
	--*12	12	(17.75)/.699	(13.97)/.550	(12.70)/.500
	--*10	10	(15.21)/.599	(11.43)/.450	(10.16)/.400
	--*08	8	(12.67)/.499	(8.89)/.350	(7.62)/.300
	--*06	6	(10.13)/.399	(6.35)/.250	(5.08)/.200
90584	--*04	4	(7.59)/.299	(3.81)/.150	(2.54)/.100
PART NO.	CCT SIZE		DIMENSION A	DIMENSION B	DIMENSION C

HOUSING

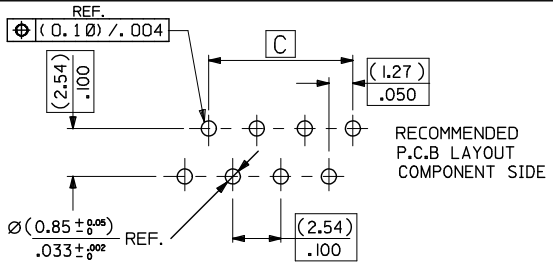
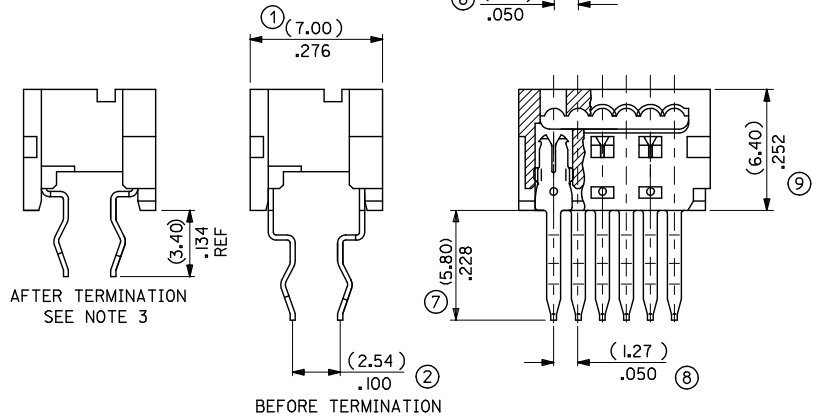
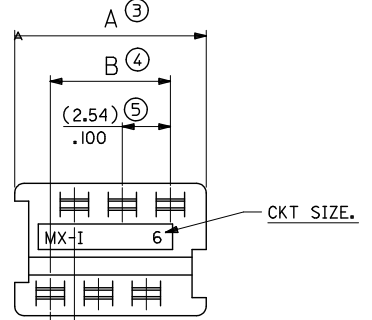
MATL. POLYESTER, RATED UL 94V-0, COLOUR WHITE.

IDT CONTACT

MATL : PHOSPHOR BRONZE (0.28)/.011 REF THICK.
PLATING : (2-4um) / 80-160u" TIN

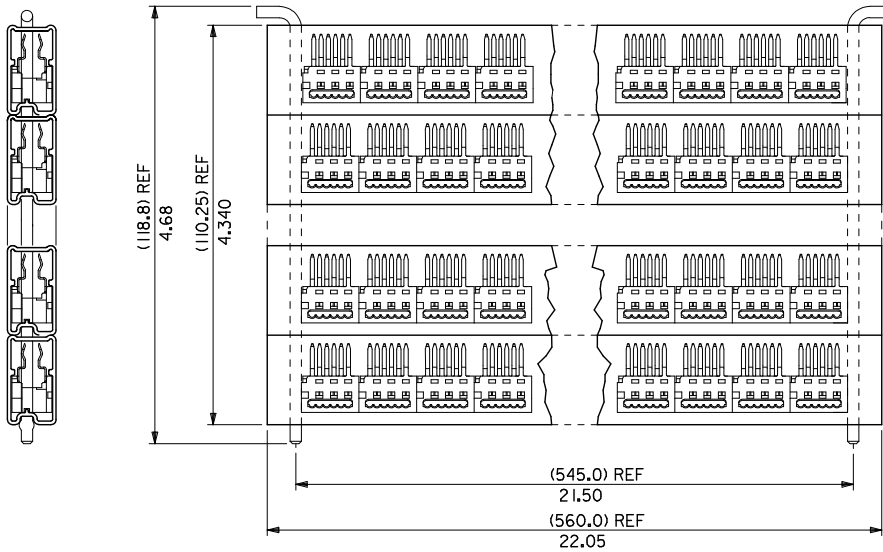
NOTES:

1. APPL. CLASS TO DIN 40040 HME (-25°C/+100°C)
 2. PRODUCT SPECIFICATION: PS-99020-0011
 3. WIRE TERMINATION SPEC: ES-99033-0002
 4. PACKAGING SPEC: PK-90584-001
- 90584-***
- 04 TO 26 = CKT SIZE.
 - 3= NO CIRCUITS VOIDED.
 - 4= CIRCUITS 4 & 5 VOIDED.
 - I= INDIVIDUAL TUBED ASSY
 - 2= STACKED TUBED ASSY - SEE SHEET 2
 - 8 = NON STANDARD TUBE OPTION - SEE SHEET 3
 - 9= NON STANDARD OPTION - SEE SHEET 3



ADDED NON STD TUBE EC NO: PG2015-0003 DRAWN BY: RDRW/SHRINES 2014/07/07 CHKD: APPR: STGR/FFIN 2014/10/30 REV:	QUALITY SYMBOLS	GENERAL TOLERANCES (UNLESS SPECIFIED)	DIMENSION STYLE	SCALE	DESIGN UNITS	THIRD ANGLE PROJECTION															
	$\nabla=0$ $\nabla=0$	<table border="1"> <tr> <th></th> <th>mm</th> <th>INCH</th> </tr> <tr> <td>4 PLACES</td> <td>±---</td> <td>±---</td> </tr> <tr> <td>3 PLACES</td> <td>±---</td> <td>±.010</td> </tr> <tr> <td>2 PLACES</td> <td>±0.25</td> <td>±---</td> </tr> <tr> <td>1 PLACE</td> <td>±---</td> <td>±---</td> </tr> </table>		mm	INCH	4 PLACES	±---	±---	3 PLACES	±---	±.010	2 PLACES	±0.25	±---	1 PLACE	±---	±---	MM/IN	5:1	METRIC	
		mm	INCH																		
	4 PLACES	±---	±---																		
3 PLACES	±---	±.010																			
2 PLACES	±0.25	±---																			
1 PLACE	±---	±---																			
DRAFT WHERE APPLICABLE MUST REMAIN WITHIN DIMENSIONS	SEE CHART																				

10 9 8 7 6 5 4 3 2 1



STACKED TUBED ASSEMBLY

REVISION UPDATE EC NO: E2005-1027 DRAWN BY: SWEN 2005/05/10 CHKD: MORIARTY 2005/05/10 APPR: J DENNEHY 2005/05/26	QUALITY SYMBOLS ▽=0 ▽=0	GENERAL TOLERANCES (UNLESS SPECIFIED)		DIMENSION STYLE MM/IN		SCALE NTS	DESIGN UNITS METRIC	THIRD ANGLE PROJECTION
		4 PLACES	± ---	± ---	DRAWN BY	DATE	TITLE 1.27MM PF LOW PRO IDT BOARD-IN CONNECTOR	
		3 PLACES	± ---	± .010	CHECKED BY	DATE		
		2 PLACES	± 0.25	± ---	MOR I ARTY	2005/05/06		
1 PLACE	± ---	± ---	APPROVED BY	DATE				
		ANGULAR ± 2 °		J DENNEHY	2005/05/10	MOLEX INCORPORATED		
DRAFT WHERE APPLICABLE MUST REMAIN WITHIN DIMENSIONS		SEE SHEET 1		MATERIAL NO.		DOCUMENT NO.		SHEET NO.
				SIZE A 3		THIS DRAWING CONTAINS INFORMATION THAT IS PROPRIETARY TO MOLEX INCORPORATED AND SHOULD NOT BE USED WITHOUT WRITTEN PERMISSION		2 OF 3

9 8 7 6 5 4 3 2 1