

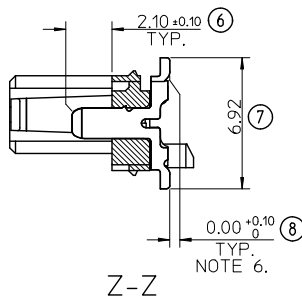
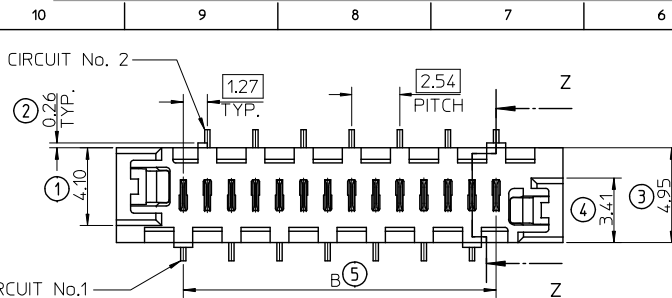
## **Excellent Integrated System Limited**

Stocking Distributor

Click to view price, real time Inventory, Delivery & Lifecycle Information:

[Molex Connector Corporation](#)  
[0908160012](#)

For any questions, you can email us directly:  
[sales@integrated-circuit.com](mailto:sales@integrated-circuit.com)



PART NO.	NUMBER OF CKTS	DIMN. A	DIMN. B	DIMN. C	DIMN. D	
90816-**-04	4	10.86	3.81	6.11	7.66	NOTE 7
90816-**-06	6	13.40	6.35	8.65	10.20	
90816-**-08	8	15.94	8.89	11.19	12.74	
90816-**-10	10	18.48	11.43	13.73	15.28	
90816-**-12	12	21.02	13.97	16.27	17.82	
90816-**-14	14	23.56	16.51	18.81	20.36	
90816-**-16	16	26.10	19.05	21.35	22.90	
90816-**-18	18	28.64	21.59	23.89	25.44	
90816-**-20	20	31.18	24.13	26.43	27.98	
90816-**-22	22	33.72	26.67	28.97	30.52	
90816-**-24	24	36.26	29.21	31.51	33.06	
90816-**-26	26	38.80	31.75	34.05	35.60	

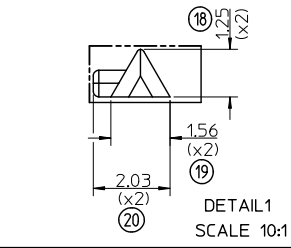
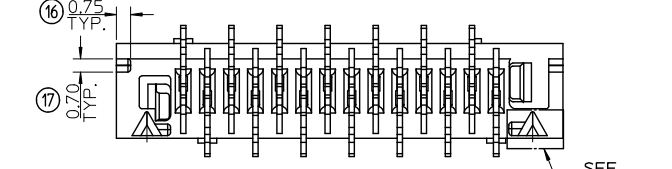
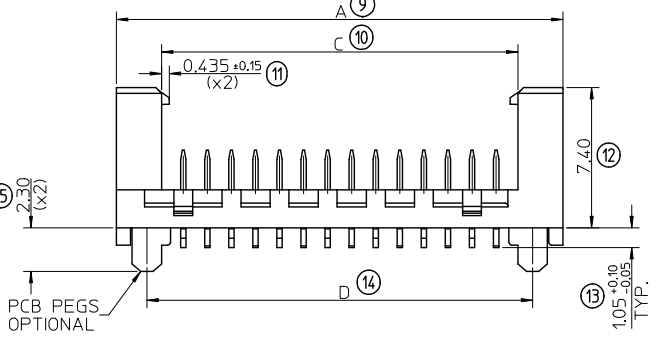
14 CIRCUIT SHOWN FOR ILLUSTRATION ONLY.

90816 - \* \* \* \* CIRCUIT SIZE.

	PCB PEGS	TUBE PACKED	TAPE & REEL PACKED
0	YES	NO	NO
2	YES	NO	YES
3	NO	YES	NO
5	NO	NO	YES

0 - TIN VERSION  
3 - PALLADIUM NICKEL VERSION

- NOTES:
- MATERIAL HOUSING: PPA, GLASS-FILLED, COLOUR: BLACK, UL 94-HB. TERMINAL: BRASS
  - FINISHES: TERMINAL PALLADIUM NICKEL (PdNi); CONTACT AREA: SELECTIVE PdNi, 0.6 MICROMETRE MINIMUM UNDER 0.05 MICROMETRE MINIMUM GOLD FLASH SMT TAILS: TIN (Sn), 3 MICROMETRE MIN OVER NICKEL UNDERPLATE. TIN: 3 MICROMETRE MINIMUM OVER NICKEL UNDERPLATE.
  - PRODUCT SPECIFICATION: PS-99020-0011
  - PACKAGING SPECIFICATION: FOR TAPE AND REEL SEE: PK-90816-006 FOR TUBE SEE: PK-90816-007
  - MATES WITH MOLEX 90327 PART SERIES.
  - ALL SMT TAILS TO LIE WITHIN A COPLANARITY BAND OF 0 - 0.10 MICROMETRE REF. FROM EACH OTHER.
  - 4 CIRCUIT PART NOT AVAILABLE IN TAPE AND REEL.
- LAST INSPECTION NUMBER USED: 20



REV	DESCRIPTION
1	ADDED UL FLAMMABILITY RE: MOLEX PEGS RE: PK-90816-006
2	CHANGED BYRNES 2012/07/25
3	CHKD:IMMER 2013/01/22
4	APPR:STIGFFIN 2013/01/23

QUALITY SYMBOLS	GENERAL TOLERANCES (UNLESS SPECIFIED)
▽=0	4 PLACES ± --- ± ---
▽=0	3 PLACES ± --- ± ---
	2 PLACES ± 0.25 ± ---
	1 PLACE ± 0.35 ± ---
	ANGULAR ± 2 °

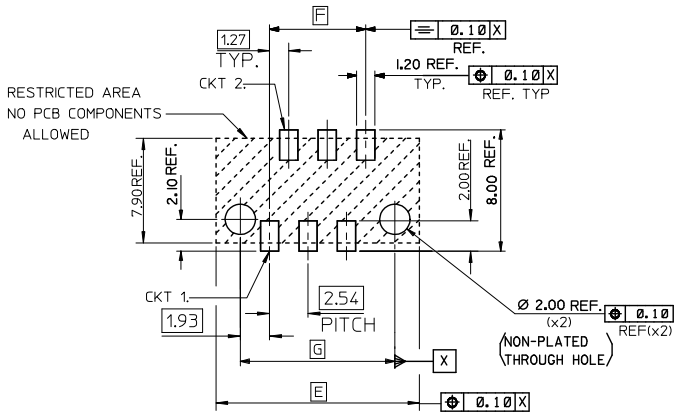
DRAFT WHERE APPLICABLE MUST REMAIN WITHIN DIMENSIONS

DIMENSION STYLE		SCALE	DESIGN UNITS	THIRD ANGLE PROJECTION
MM ONLY		5:1	METRIC	⊙ □
DRAWN BY	DATE	TITLE		
D. BYRNES	2008/08/16	PICO FLEX SMT LATCHED HEADER		
CHECKED BY	DATE	MOLEX INCORPORATED		
JDWALLACE	2008/08/26	SD-90816-001		
APPROVED BY	DATE	SHEET NO.		
EFOLAN	2010/11/04	1 OF 2		

MATERIAL NO.	DOCUMENT NO.	SHEET NO.
SEE CHART	SD-90816-001	1 OF 2

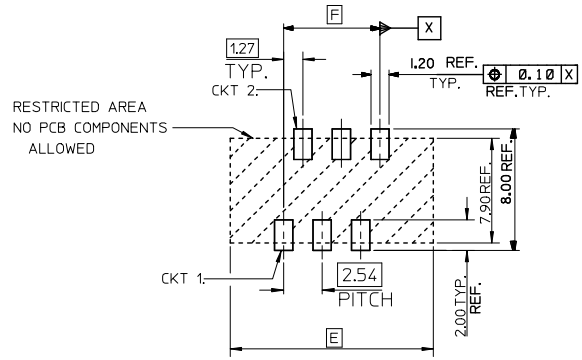
THIS DRAWING CONTAINS INFORMATION THAT IS PROPRIETARY TO MOLEX INCORPORATED AND SHOULD NOT BE USED WITHOUT WRITTEN PERMISSION

10 9 8 7 6 5 4 3 2 1



RESTRICTED AREA  
NO PCB COMPONENTS  
ALLOWED

RECOMMENDED PCB THICKNESS 1.60±0.14  
PCB LAYOUT FOR CLEARANCE FIT WITH PCB PEGS  
HEADER VERSIONS 90816-\*0\*\*/\*2\*\*  
VIEWED FROM COMPONENT SIDE  
6CKT PART SHOWN FOR REFERENCE



RESTRICTED AREA  
NO PCB COMPONENTS  
ALLOWED

PCB LAYOUT WITHOUT PCB PEGS  
HEADER VERSIONS 90816-\*3\*\*/\*5\*\*  
VIEWED FROM COMPONENT SIDE  
6CKT PART SHOWN FOR REFERENCE

90816-**26	26	38.80	31.75	35.60
90816-**24	24	36.26	29.21	33.06
90816-**22	22	33.72	26.67	30.52
90816-**20	20	31.18	24.13	27.98
90816-**18	18	28.64	21.59	25.44
90816-**16	16	26.10	19.05	22.90
90816-**14	14	23.56	16.51	20.36
90816-**12	12	21.02	13.97	17.82
90816-**10	10	18.48	11.43	15.28
90816-**08	8	15.94	8.89	12.74
90816-**06	6	13.40	6.35	10.20
90816-**04	4	10.86	3.81	7.66
PART NO.	NUMBER OF CKTS	DIM. E	DIM. F	DIM. G

REV	DESCRIPTION	QUALITY SYMBOLS	GENERAL TOLERANCES (UNLESS SPECIFIED)		DIMENSION STYLE		SCALE	DESIGN UNITS	THIRD ANGLE PROJECTION
			mm	INCH	MM ONLY	MM ONLY			
1	SEE SHEET 1	▽=0	4 PLACES ±---	±---	DRAWN BY	DATE	5:1	METRIC	PICO FLEX SMT LATCHED HEADER
2	EC. NO: IPG2013-0901	▽=0	3 PLACES ±---	±---	D. BYRNES	2008/08/16			
3	TDR:BYRNES 2012/07/25		2 PLACES ±0.25	±---	CHECKED BY	DATE	MOLEX INCORPORATED		
4	CHK:DMAHER 2013/01/22		1 PLACE ±0.35	±---	JDWALLACE	2008/08/26			
5	APPR: STORFFIN 2013/01/23		ANGULAR ± 2°		APPROVED BY	DATE	SD-90816-001		
6			DRAFT WHERE APPLICABLE MUST REMAIN WITHIN DIMENSIONS		EFOLAN	2010/11/04			
					MATERIAL NO.	DOCUMENT NO.	SHEET NO.		
					SEE SHEET 1		2 OF 2		
					THIS DRAWING CONTAINS INFORMATION THAT IS PROPRIETARY TO MOLEX INCORPORATED AND SHOULD NOT BE USED WITHOUT WRITTEN PERMISSION				

9 8 7 6 5 4 3 2 1