

Excellent Integrated System Limited

Stocking Distributor

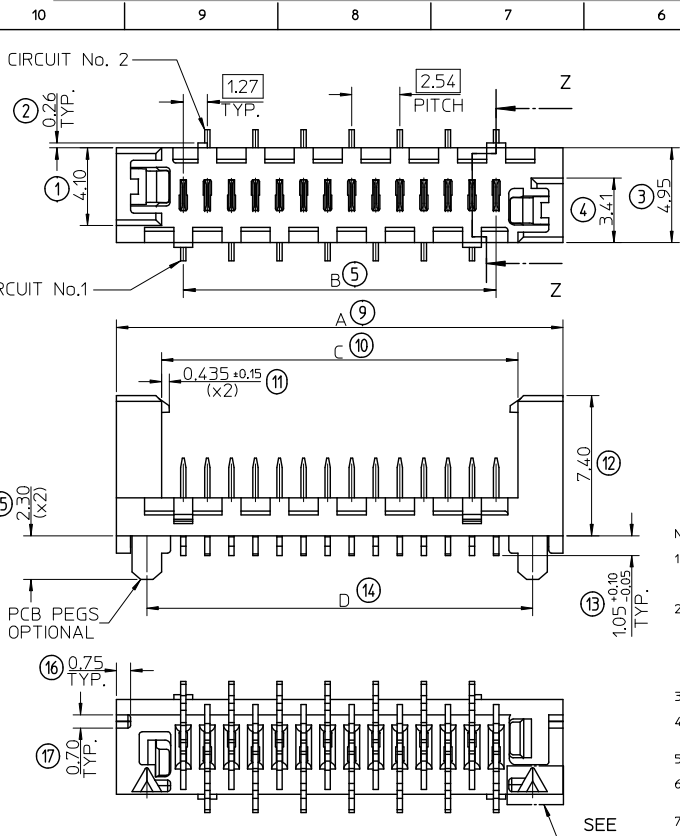
Click to view price, real time Inventory, Delivery & Lifecycle Information:

[Molex Connector Corporation](#)

[0908163304](#)

For any questions, you can email us directly:

sales@integrated-circuit.com



14 CIRCUIT SHOWN FOR ILLUSTRATION ONLY.

NOTES:

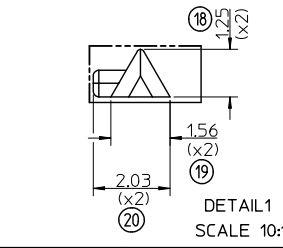
- MATERIAL HOUSING: PPA, GLASS-FILLED, COLOUR: BLACK, UL 94-HB. TERMINAL: BRASS
 - FINISHES: TERMINAL PALLADIUM NICKEL (PdNi); CONTACT AREA: SELECTIVE PdNi, 0.6 MICROMETRE MINIMUM UNDER 0.05 MICROMETRE MINIMUM GOLD FLASH SMT TAILS: TIN (Sn), 3 MICROMETRE MIN OVER NICKEL UNDERPLATE. TIN: 3 MICROMETRE MINIMUM OVER NICKEL UNDERPLATE.
 - PRODUCT SPECIFICATION: PS-99020-0011
 - PACKAGING SPECIFICATION: FOR TAPE AND REEL SEE: PK-90816-006 FOR TUBE SEE: PK-90816-007
 - MATES WITH MOLEX 90327 PART SERIES.
 - ALL SMT TAILS TO LIE WITHIN A COPLANARITY BAND OF 0 - 0.10 MICROMETRE REF. FROM EACH OTHER.
 - 4 CIRCUIT PART NOT AVAILABLE IN TAPE AND REEL.
- LAST INSPECTION NUMBER USED: 20

PART NO.	NUMBER OF CKTS	DIMN. A	DIMN. B	DIMN. C	DIMN. D	NOTE 7
90816-**04	4	10.86	3.81	6.11	7.66	
90816-**06	6	13.40	6.35	8.65	10.20	
90816-**08	8	15.94	8.89	11.19	12.74	
90816-**10	10	18.48	11.43	13.73	15.28	
90816-**12	12	21.02	13.97	16.27	17.82	
90816-**14	14	23.56	16.51	18.81	20.36	
90816-**16	16	26.10	19.05	21.35	22.90	
90816-**18	18	28.64	21.59	23.89	25.44	
90816-**20	20	31.18	24.13	26.43	27.98	
90816-**22	22	33.72	26.67	28.97	30.52	
90816-**24	24	36.26	29.21	31.51	33.06	
90816-**26	26	38.80	31.75	34.05	35.60	

90816 - * * * * CIRCUIT SIZE.

	PCB PEGS	TUBE PACKED	TAPE & REEL PACKED
0	YES	NO	YES
2	YES	NO	YES
3	NO	YES	NO
5	NO	NO	YES

0 - TIN VERSION
3 - PALLADIUM NICKEL VERSION



ADDED UL FLAMMABILITY RE: MOLEX PEGS RE: PK-90315-001
TD: D.BYRNES 2012/07/25
CHKD: D.BYRNES 2013/01/22
APPR: S.TRIFFIN 2013/01/23
REV DESCRIPTION

QUALITY SYMBOLS	GENERAL TOLERANCES (UNLESS SPECIFIED)	
	mm	INCH
▽=0	4 PLACES ±---	±---
▽=0	3 PLACES ±---	±---
▽=0	2 PLACES ±0.25	±---
▽=0	1 PLACE ±0.35	±---
▽=0	ANGULAR ± 2 °	

DRAFT WHERE APPLICABLE MUST REMAIN WITHIN DIMENSIONS

DIMENSION STYLE		SCALE	DESIGN UNITS	THIRD ANGLE PROJECTION
MM ONLY		5:1	METRIC	⊙ □
DRAWN BY	DATE	TITLE		
D.BYRNES	2008/08/16	PICOFLEX SMT LATCHED HEADER		
CHECKED BY	DATE	MOLEX INCORPORATED		
JDWALLACE	2008/08/26	MATERIAL NO. SD-90816-001		
APPROVED BY	DATE	DOCUMENT NO. SD-90816-001		
EFOLAN	2010/11/04	SHEET NO. 1 OF 2		

DRAWN BY		DATE	TITLE	
D.BYRNES		2008/08/16	PICOFLEX SMT LATCHED HEADER	
CHECKED BY		DATE	MOLEX INCORPORATED	
JDWALLACE		2008/08/26	MATERIAL NO. SD-90816-001	
APPROVED BY		DATE	DOCUMENT NO. SD-90816-001	
EFOLAN		2010/11/04	SHEET NO. 1 OF 2	

