

## Excellent Integrated System Limited

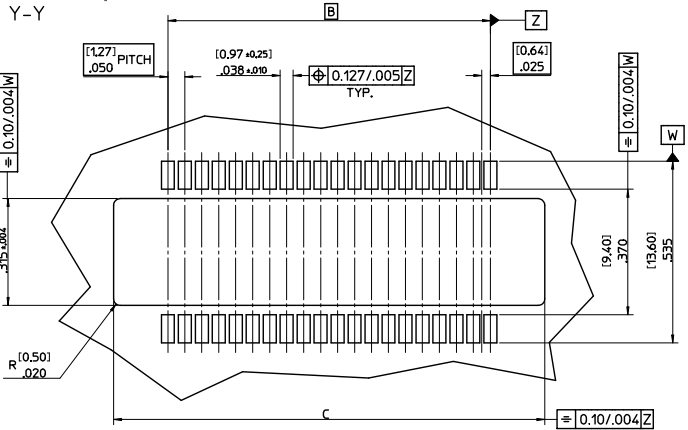
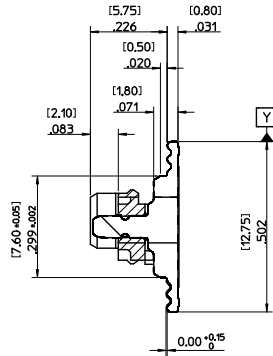
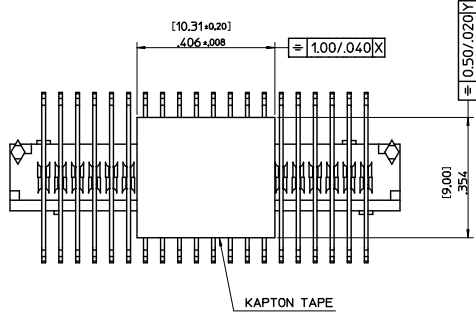
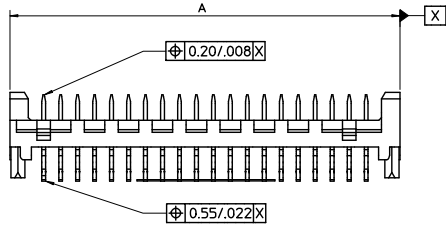
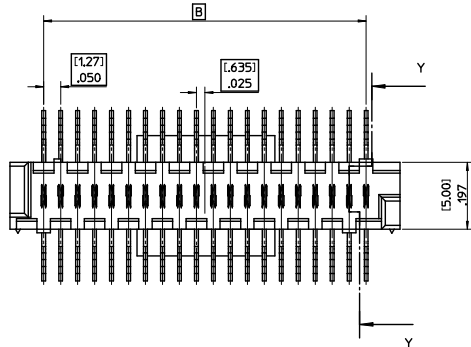
Stocking Distributor

Click to view price, real time Inventory, Delivery & Lifecycle Information:

[Molex Connector Corporation](#)  
[0913300020](#)

For any questions, you can email us directly:

[sales@integrated-circuit.com](mailto:sales@integrated-circuit.com)



RECOMMENDED PCB LAYOUT  
THICKNESS-[1.57+0.13]/.062+.005

91330-0026	26	(36.80)/1.449	(31.75)/1.25	(37.33)/1.470
91330-0024	24	(34.26)/1.349	(29.21)/1.15	(34.81)/1.370
91330-0022	22	(31.72)/1.249	(26.67)/1.05	(32.27)/1.270
91330-0020	20	(29.18)/1.149	(24.13)/.95	(29.73)/1.170
91330-0018	18	(26.64)/1.049	(21.59)/.85	(27.19)/1.070
91330-0016	16	(24.10)/.949	(19.05)/.75	(24.65)/.970
91330-0014	14	(21.56)/.849	(16.51)/.65	(22.11)/.870
91330-0012	12	(19.02)/.749	(13.97)/.55	(19.57)/.770
91330-0010	10	(16.48)/.649	(11.43)/.45	(17.03)/.670
91330-0008	8	(13.94)/.549	(8.89)/.35	(14.49)/.570
91330-0006	6	(11.40)/.449	(6.35)/.25	(11.95)/.470
PART No.	CCT	DIM. A	DIM B	DIM.C (+0.25) ±.010

NOTES:  
1.MATERIALS:  
HOUSING: POLYAMIDE 46, 30% GLASS FILL, NATURAL, UL94 V-0  
TERMINAL: BRASS [0.28]/.01 REF. THICK  
KAPTON TAPE: POLYAMIDE [0.08]/.003 REF. THICK  
2.PLATING:TIN  
3.PACKAGING: TAPE AND REEL PER PK-91330-003

ADD 6CKT OPTION EC NO: E2005-1005 DRAWING: GMSWEE/05/05/24 CHKD: DMORAR/05/05/24 APPR: J DENNEN/05/05/27	QUALITY SYMBOLS	GENERAL TOLERANCES (UNLESS SPECIFIED)	SCALE 5:1	DESIGN UNITS METRIC	THIRD ANGLE PROJECTION	REVISE ON CAD ONLY	
	0 0	mm	INCH	DIMENSION STYLE IN/MM		TITLE	
		4 PLACES ± --- ± ---	3 PLACES ± --- ± .004	DRAWN BY MOR	DATE 98/07/08	PICOFLEX SMT HEADER THROUGH BOARD	
		2 PLACES ± 0.10 ± ---	1 PLACE ± --- ± ---	CHECKED BY DOS	DATE 98/07/08	MOLEX INCORPORATED	
REVISION	DESCRIPTION	ANGULAR ± 2 °	DRAFT WHERE APPLICABLE	APPROVED BY JHORGAN	DATE 98/07/08	MATERIAL NO. SEE CHART	
		MUST REMAIN WITHIN DIMENSIONS	THIS DRAWING CONTAINS INFORMATION THAT IS PROPRIETARY TO MOLEX INCORPORATED AND SHOULD NOT BE USED WITHOUT WRITTEN PERMISSION	DOCUMENT NO. SD-91330-001	1 OF 1	SHEET NO. 1 OF 1	