

Excellent Integrated System Limited

Stocking Distributor

Click to view price, real time Inventory, Delivery & Lifecycle Information:

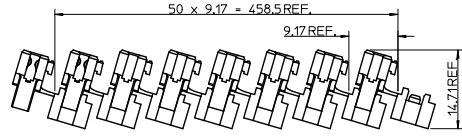
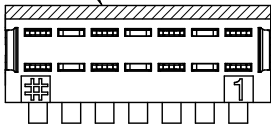
[Molex Connector Corporation](#)
[0917173002](#)

For any questions, you can email us directly:

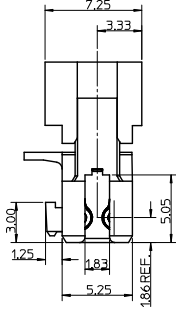
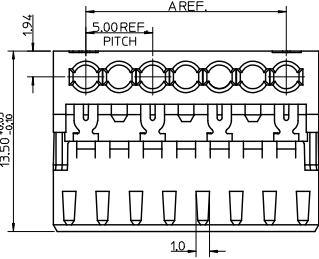
sales@integrated-circuit.com

13 12 11 10 9 8 7 6 5 4 3 2 1

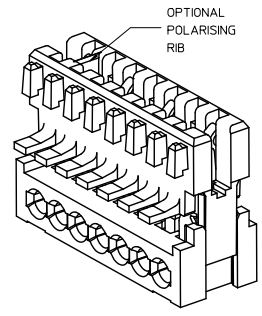
POSITION OF COLOUR STRIPE (see note 3)



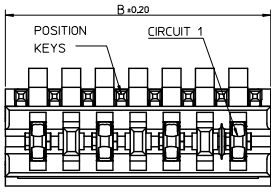
CCT	'A'	'B'
2	5.0	9.875
3	10.0	14.875
4	15.0	19.875
5	20.0	24.875
6	25.0	29.875
7	30.0	34.875
8	35.0	39.875
9	40.0	44.875
10	45.0	49.875



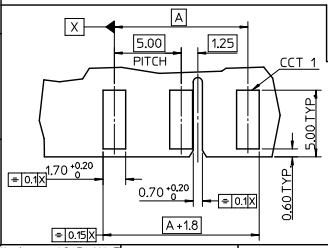
SHIPPING ARRANGEMENT
SCALE 2:1



SEE SD-91717-001 FOR RELEVANT PART NUMBERS.



- NOTES:
- REFER TO PRODUCT SPECIFICATION: PS-99020-0040.
 - MATERIAL: HOUSING - NYLON PA6
UL94-V0, COLOUR: NATURAL (WHITE).
TERMINAL: PHOSPHOR BRONZE 0.30 REF. THICK - PLATING HOT TIN DP.
 - COLOUR STRIPE IS OPTIONAL, AVAILABLE IN THE FOLLOWING COLOURS: BLACK, RED, GREEN, BLUE
 - REFER TO PACKAGING SPEC (PK-90871-001).
 - REFER TO APPLICATION SPEC (AS-99033-0008)



- RECOMMENDED PCB LAYOUT FOR 3CCT (5MM PITCH) CONNECTOR (OPTIONAL POSITIONAL RIB SLOT ALSO SHOWN)
- RECOMMENDED PCB THICKNESS 1.5±0.14mm

ADDED P/N
EC NO: PC2015-1672
DRAWN: NICHAN 2015/03/24
CHKD:
APPROV: SHAMHAN 2016/02/26
REV: AA

QUALITY SYMBOLS
▽=0
▽=0

GENERAL TOLERANCES (UNLESS SPECIFIED)	
	mm INCH
4 PLACES	± 0.10 ± 0.004
3 PLACES	± 0.15 ± 0.006
2 PLACES	± 0.20 ± 0.008
1 PLACE	± 0.25 ± 0.010
ANGULAR ±1/2°	

DIMENSION STYLE	
MM ONLY	
DRAWN BY	DATE
MCNAMAR	2004/02/12
CHECKED BY	DATE
JDENNEHY	2004/02/13
APPROVED BY	DATE
BMAGUIRE	2004/02/16

SCALE	DESIGN UNITS	THIRD ANGLE PROJECTION
5:1	METRIC	☉
TITLE		
APPLI-MATE 2.5 FEMALE 5MM TERMINAL PITCH (MATL: NYLON PA6)		
MOLEX INCORPORATED		
MATERIAL NO.	DOCUMENT NO.	SHEET NO.
SEE SHEET 2 & 3	SD-91717-001	1 OF 3
SIZE A THIS DRAWING CONTAINS INFORMATION THAT IS PROPRIETARY TO MOLEX INCORPORATED AND SHOULD NOT BE USED WITHOUT WRITTEN PERMISSION		

ib_frame_A2_P_AM_1 Rev. E 2006/04/15 12 11 10 9 8 7 6 5 4 3 2 1

2 CIRCUIT					
MOLEX PART NO.	MOLEX HOUSING NO.	REMOVED POSITION KEYS	CONFIGURATION (SEE NOTES)	POLARIZING RIB	COLOUR STRIPE
91717-0002	91715-0003	NONE		NONE	NONE
91717-0003	91715-0003	a		NONE	NONE
91717-0004	91715-0003	b		NONE	NONE
91717-0005	91715-0003	c		NONE	NONE
91717-0006	91715-0003	d		NONE	NONE
91717-0007	91715-0003	b d		NONE	NONE
91717-0008	91715-0003	a c		NONE	NONE
91717-0009	91715-0003	a d		NONE	NONE
91717-0010	91715-0003	a b		NONE	NONE
91717-0011	91715-0003	b c		NONE	NONE
91717-0012	91715-0003	c d		NONE	NONE
91717-0014	91715-0003	b c d		NONE	NONE
91717-0013	91715-0003	b c		NONE	RED
91717-0015	91715-0003	b c d		NONE	BLUE
91717-0016	91715-0003	c d		NONE	BLUE
91717-0017	91715-0203	NONE		BETWEEN HSG OKT 2&3	NONE
91717-0018	91715-0103	NONE		BETWEEN HSG OKT 1&2	NONE
91717-0019	91715-0003	NONE		NONE	BLUE
91717-0020	91715-0003	a c		NONE	BLUE
91717-0021	91715-0003	b c		NONE	GREEN
91717-0022	91715-0003	a d		NONE	GREEN
91717-0023	91715-0003	NONE		NONE	GREEN
91717-0024	91715-0103	d		BETWEEN HSG OKT 1&2	RED

2 CIRCUIT (cont'd)					
MOLEX PART NO.	MOLEX HOUSING NO.	REMOVED POSITION KEYS	CONFIGURATION (SEE NOTES)	POLARIZING RIB	COLOUR STRIPE
91717-0025	91715-0103	a c		BETWEEN HSG OKT 1&2	RED
91717-0026	91715-0203	a		BETWEEN HSG OKT 2&3	NONE
91717-0027	91715-0203	NONE		BETWEEN HSG OKT 2&3	RED
91717-0028	91715-0003	a		NONE	RED
91717-0029	91715-0003	NONE		NONE	RED
91717-0030	91715-0103	b c d		BETWEEN HSG OKT 1&2	RED
91717-0031	91715-0203	a		BETWEEN HSG OKT 2&3	RED
91717-0032	91715-0003	b		NONE	RED
91717-0033	91715-0003	d		NONE	YELLOW
91717-0035	91715-0003	b d		NONE	GREEN
91717-0036	91715-0103	NONE		BETWEEN HSG OKT 1&2	RED
91717-0037	91715-0103	b d		BETWEEN HSG OKT 1&2	RED
91717-0038	91715-0203	a c		BETWEEN HSG OKT 2&3	NONE
91717-0039	91715-0003	a b d		NONE	NONE
91717-0040	91715-0003	a		NONE	BLUE

3 CIRCUIT							
MOLEX PART NO.	MOLEX HOUSING NO.	REMOVED POSITION KEYS	CONFIGURATION (SEE NOTES)	ENDWALLS		POLARIZING RIB	COLOUR STRIPE
				FIRST	LAST		
91717-1001	91715-0005	NONE		OPEN	OPEN	NONE	NONE
91717-1002	91715-0005	b		OPEN	OPEN	NONE	NONE
91717-1003	91715-0005	c		OPEN	OPEN	NONE	NONE
91717-1004	91715-0005	c d e		OPEN	OPEN	NONE	NONE
91717-1005	91715-0405	NONE		OPEN	OPEN	BETWEEN HSG OCT 4&5	NONE
91717-1007	91715-0105	NONE		OPEN	OPEN	BETWEEN HSG OCT 1&2	NONE
91717-1008	91715-0005	d e f		OPEN	OPEN	NONE	RED
91717-1009	91715-0005	a b c		OPEN	OPEN	NONE	RED
91717-1010	91715-0005	a c d e		OPEN	OPEN	NONE	NONE
91717-1011	91715-0005	a c d e		OPEN	OPEN	NONE	BLUE
91717-1012	91715-0005	b c d e		OPEN	OPEN	NONE	NONE
91717-1013	91715-0005	a c e		OPEN	OPEN	NONE	NONE
91717-1014	91715-0005	a e		OPEN	OPEN	NONE	NONE
91717-1015	91715-0005	a e		OPEN	OPEN	NONE	BLACK
91717-1016	91715-0005	d e f		OPEN	OPEN	NONE	NONE
91717-1017	91715-0005	NONE		OPEN	OPEN	NONE	GREEN
91717-1018	91715-0005	d f		OPEN	OPEN	NONE	NONE
91717-1019	91715-0425	NONE		CLOSED	CLOSED	BETWEEN HSG OCT 4&5	NONE
91717-1020	91715-0005	d		OPEN	OPEN	NONE	NONE

NOTES
 + DENOTES TERMINAL VOIDED POSITION
 ● DENOTES TERMINAL LOADED POSITION
 † DENOTES POLARIZING RIB POSITION

SEE SHEET 1 SEC. NO. 105015-1072 DR. DRANKS/KONNAN CH-KC APPROVED 2015/03/24 2016/02/26 AA	QUALITY SYMBOLS	GENERAL TOLERANCES (UNLESS SPECIFIED)	DIMENSION STYLE	SCALE	DESIGN UNITS	THIRD ANGLE PROJECTION	
		mm INCH	MM ONLY	1:1	METRIC		
		4 PLACES ±.0005 ±.0008	DRAWN BY	DATE	TITLE		
		3 PLACES ±.010 ±.015	WKNAMAR	2004/02/12	APPLI-MATE 2.5 FEMALE		
	2 PLACES ±.020 ±.030	JDENNEY	2004/02/13	5MM TERMINAL PITCH			
	1 PLACE ±.02	APPROVED BY	DATE	(MATL: NYLON PA6)			
	ANGULAR ±1/2°	BMAGUIRE	2004/02/16	MOLEX INCORPORATED			
DRAFT WHERE APPLICABLE MUST REMAIN WITHIN DIMENSIONS		MATERIAL NO.	DOCUMENT NO.	SD-91717-001			
		INCORPORATED AND SHOULD NOT BE USED WITHOUT WRITTEN PERMISSION		2 OF 3			

4 CIRCUIT

MOLEX PART NO.	MOLEX HOUSING NO.	REMOVED POSITION KEYS	CONFIGURATION (SEE NOTES)	POLARIZING RIB	COLOUR STRIPE
91717-2001	91715-0007	NONE		NONE	NONE
91717-2002	91715-0007	a		NONE	NONE
91717-2003	91715-0007	b		NONE	NONE
91717-2004	91715-0007	d f		NONE	NONE
91717-2005	91715-0007	a e g		NONE	RED
91717-2006	91715-0007	c e		NONE	NONE
91717-2007	91715-0007	a b d e g		NONE	NONE
91717-2008	91715-0007	NONE		NONE	BLUE
91717-2009	91715-0007	a d g		NONE	BROWN
91717-2010	91715-0007	a b f g h		NONE	BROWN
91717-2011	91715-0007	NONE		NONE	GREEN
91717-2014	91715-0007	a c f		NONE	NONE

7 CIRCUIT

MOLEX PART NO.	MOLEX HOUSING NO.	REMOVED POSITION KEYS	CONFIGURATION (SEE NOTES)	POLARIZING RIB	COLOUR STRIPE
91717-5001	91715-0013	a c e g i k m		NONE	NONE

8 CIRCUIT

MOLEX PART NO.	MOLEX HOUSING NO.	REMOVED POSITION KEYS	CONFIGURATION (SEE NOTES)	POLARIZING RIB	COLOUR STRIPE
91717-6001	91715-0015	NONE		NONE	NONE

9 CIRCUIT

MOLEX PART NO.	MOLEX HOUSING NO.	REMOVED POSITION KEYS	CONFIGURATION (SEE NOTES)	POLARIZING RIB	COLOUR STRIPE
91717-7001	91715-0017	NONE		NONE	NONE

5 CIRCUIT

MOLEX PART NO.	MOLEX HOUSING NO.	REMOVED POSITION KEYS	CONFIGURATION (SEE NOTES)	POLARIZING RIB	COLOUR STRIPE
91717-3001	91715-0009	NONE		NONE	NONE
91717-3002	91715-0009	b c g h i		NONE	GREEN
91717-3003	91715-0009	ALL		NONE	NONE
91717-3004	91715-0009	NONE		NONE	RED

10 CIRCUIT

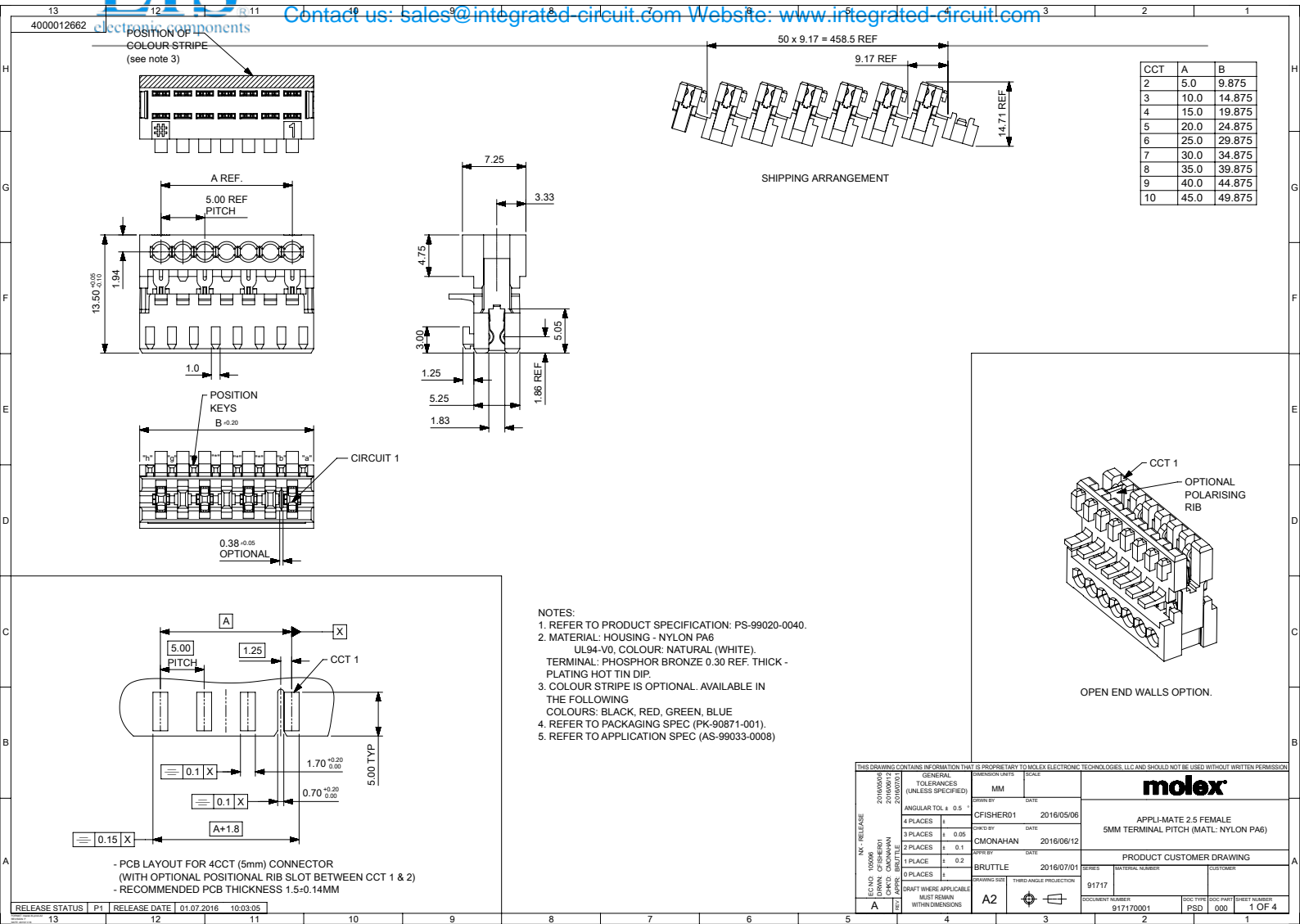
MOLEX PART NO.	MOLEX HOUSING NO.	REMOVED POSITION KEYS	CONFIGURATION (SEE NOTES)	POLARIZING RIB	COLOUR STRIPE
91717-8001	91715-0019	NONE		NONE	NONE

6 CIRCUIT

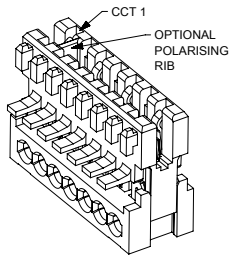
MOLEX PART NO.	MOLEX HOUSING NO.	REMOVED POSITION KEYS	CONFIGURATION (SEE NOTES)	POLARIZING RIB	COLOUR STRIPE
91717-4001	91715-0011	NONE		NONE	NONE
91717-4002	91715-0011	b c d e f g h i k		NONE	NONE
91717-4003	91715-0011	NONE		NONE	GREEN

- NOTES
- ⊕ DENOTES TERMINAL VOIDED POSITION
 - ⊙ DENOTES TERMINAL LOADED POSITION
 - ⊥ DENOTES POLARIZING RIB POSITION

SEE SHEET 1 EC No. P2005-1672 DRAWN: KIMHAN CHKD: APPROVED: MANHAN DATE: 2015/03/24 2016/07/26 QUALITY SYMBOLS AA	GENERAL TOLERANCES (UNLESS SPECIFIED) 4 PLACES ±--- INCH 3 PLACES ±--- INCH 2 PLACES ±0.10 INCH 1 PLACE ±0.2 INCH ANGULAR ±1/2°	DIMENSION STYLE MM ONLY DRAWN BY: WKNAMAR CHECKED BY: JDENNEHY APPROVED BY: BMAGUIRE DATE: 2004/02/12 DATE: 2004/02/13 DATE: 2004/02/16	SCALE: 1:1 DESIGN UNITS: METRIC THIRD ANGLE PROJECTION
	TITLE: APPLI-MATE 2.5 FEMALE 5MM TERMINAL PITCH (MATL: NYLON PA6)		
	MATERIAL NO.: SD-91717-001 DOCUMENT NO.: 3 OF 3		
	DRAFT WHERE APPLICABLE MUST REMAIN WITHIN DIMENSIONS SEE CHARTS THIS DRAWING CONTAINS INFORMATION THAT IS PROPRIETARY TO MOLEX INCORPORATED AND SHOULD NOT BE USED WITHOUT WRITTEN PERMISSION		



- NOTES:
- REFER TO PRODUCT SPECIFICATION: PS-99020-0040.
 - MATERIAL: HOUSING - NYLON PA6
UL94-V0, COLOUR: NATURAL (WHITE),
TERMINAL: PHOSPHOR BRONZE 0.30 REF. THICK -
PLATING HOT TIN DIP.
 - COLOUR STRIPE IS OPTIONAL. AVAILABLE IN
THE FOLLOWING
COLOURS: BLACK, RED, GREEN, BLUE
 - REFER TO PACKAGING SPEC (PK-90871-001).
 - REFER TO APPLICATION SPEC (AS-99033-0008)



OPEN END WALLS OPTION.

THIS DRAWING CONTAINS INFORMATION THAT IS PROPRIETARY TO MOLEX ELECTRONIC TECHNOLOGIES, LLC AND SHOULD NOT BE USED WITHOUT WRITTEN PERMISSION		GENERAL TOLERANCES (UNLESS SPECIFIED)		PRECISION DATE		SCALE	
ANGULAR TOL ± 0.5°		DRAWN BY CFISHER01		DATE 2016/05/06		MM	
4 PLACES ±		CHECKED BY CMONAHAN		DATE 2016/06/12		APPLI-MATE 2.5 FEMALE 5MM TERMINAL PITCH (MATL: NYLON PA6)	
3 PLACES ± 0.08		APPROVED BY BRUTTLE		DATE 2016/07/01		PRODUCT CUSTOMER DRAWING	
2 PLACES ± 0.1		DRAWING SIZE A2		THIRDS ANGLE PROJECTION		SERIES 91717	
1 PLACE ± 0.2		DRAFT WHERE APPLICABLE MUST REMAIN WITHIN DIMENSIONS		DOCUMENT NUMBER 917170001		DOC TYPE PSD	
0 PLACES ±		RELEASE STATUS P1		RELEASE DATE 01.07.2016		SHEET NUMBER 1 OF 4	

- PCB LAYOUT FOR 4CCT (5mm) CONNECTOR
(WITH OPTIONAL POSITIONAL RIB SLOT BETWEEN CCT 1 & 2)
- RECOMMENDED PCB THICKNESS 1.5-0.14MM

RELEASE STATUS	P1	RELEASE DATE	01.07.2016	10.03.05
----------------	----	--------------	------------	----------

2 CIRCUIT

PART NUMBER	HOUSING USED	REMOVED POSITION KEYS	CONFIGURATION	FIRST ENDWALL	LAST ENDWALL	POLARIZING RIB BETWEEN	COLOUR STRIPE
91717-0002	91715-0003	NONE		OPEN	OPEN	NONE	NONE
91717-0003	91715-0003	a		OPEN	OPEN	NONE	NONE
91717-0004	91715-0003	b		OPEN	OPEN	NONE	NONE
91717-0005	91715-0003	c		OPEN	OPEN	NONE	NONE
91717-0006	91715-0003	d		OPEN	OPEN	NONE	NONE
91717-0007	91715-0003	b d		OPEN	OPEN	NONE	NONE
91717-0008	91715-0003	a c		OPEN	OPEN	NONE	NONE
91717-0009	91715-0003	a d		OPEN	OPEN	NONE	NONE
91717-0010	91715-0003	a b		OPEN	OPEN	NONE	NONE
91717-0011	91715-0003	b c		OPEN	OPEN	NONE	NONE
91717-0012	91715-0003	c d		OPEN	OPEN	NONE	NONE
91717-0013	91715-0003	b c		OPEN	OPEN	NONE	RED
91717-0014	91715-0003	b c d		OPEN	OPEN	NONE	NONE
91717-0015	91715-0003	b c d		OPEN	OPEN	NONE	BLUE
91717-0016	91715-0003	c d		OPEN	OPEN	NONE	BLUE
91717-0017	91715-0203	NONE		OPEN	OPEN	CCT 2&3	NONE
91717-0018	91715-0103	NONE		OPEN	OPEN	CCT 1&2	NONE
91717-0019	91715-0003	NONE		OPEN	OPEN	NONE	BLUE
91717-0020	91715-0003	a c		OPEN	OPEN	NONE	BLUE
91717-0021	91715-0003	b c		OPEN	OPEN	NONE	GREEN
91717-0022	91715-0003	a d		OPEN	OPEN	NONE	GREEN
91717-0023	91715-0003	NONE		OPEN	OPEN	NONE	GREEN
91717-0024	91715-0103	d		OPEN	OPEN	CCT 1&2	RED
91717-0025	91715-0103	a c		OPEN	OPEN	CCT 1&2	RED
91717-0026	91715-0203	a		OPEN	OPEN	CCT 2&3	NONE
91717-0027	91715-0203	NONE		OPEN	OPEN	CCT 2&3	RED
91717-0028	91715-0003	a		OPEN	OPEN	NONE	RED
91717-0029	91715-0003	NONE		OPEN	OPEN	NONE	RED
91717-0030	91715-0103	b c d		OPEN	OPEN	CCT 1&2	RED
91717-0031	91715-0203	a		OPEN	OPEN	CCT 2&3	RED

2 CIRCUIT (CONT)

PART NUMBER	HOUSING USED	REMOVED POSITION KEYS	CONFIGURATION	FIRST ENDWALL	LAST ENDWALL	POLARIZING RIB BETWEEN	COLOUR STRIPE
91717-0032	91715-0003	b		OPEN	OPEN	NONE	RED
91717-0033	91715-0003	d		OPEN	OPEN	NONE	YELLOW
91717-0035	91715-0003	b d		OPEN	OPEN	NONE	GREEN
91717-0036	91715-0103	NONE		OPEN	OPEN	CCT 1&2	RED
91717-0037	91715-0103	b d		OPEN	OPEN	CCT 1&2	RED
91717-0038	91715-0203	a c		OPEN	OPEN	CCT 2&3	NONE
91717-0039	91715-0003	a b d		OPEN	OPEN	NONE	NONE
91717-0040	91715-0003	a		OPEN	OPEN	NONE	BLUE

NOTES

- + DENOTES TERMINAL VOIDED POSITION
- ⊙ DENOTES TERMINAL LOADED POSITION
- ↑ DENOTES POLARIZING RIB POSITION
- MOLEX HOUSING NO. FOR REFERENCE ONLY

THIS DRAWING CONTAINS INFORMATION THAT IS PROPRIETARY TO MOLEX ELECTRONIC TECHNOLOGIES, LLC AND SHOULD NOT BE USED WITHOUT WRITTEN PERMISSION

NO. RELEASE ECN/ISSUE 2016/05/06 DRAWN: CFISHER01 CHD: CDMONAHAN DATE: 2016/05/06	GENERAL TOLERANCES (UNLESS SPECIFIED)	MM	DATE	
	ANGULAR TOL ± 0.5°	CFISHER01	2016/05/06	
	4 PLACES ±	DATE	2016/06/12	
	3 PLACES ± 0.08	DATE	2016/06/12	
	2 PLACES ± 0.1	DATE	2016/06/12	APPLI-MATE 2.5 FEMALE 5MM TERMINAL PITCH (MATL: NYLON PA6)
	1 PLACE ± 0.2	DATE	2016/07/01	
	0 PLACES ±	DATE		
	DRAFT WHERE APPLICABLE MUST REMAIN WITHIN DIMENSIONS	DATE		
A	A2	THIRD ANGLE PROJECTION	91717	PRODUCT CUSTOMER DRAWING SERIES: 91717 INTERIOR NUMBER: CUSTOMER:
			917170001	DOC TYPE: PSD DOC PART NUMBER: 000 SHEET NUMBER: 2 OF 4

3 CIRCUIT							
PART NUMBER	HOUSING USED	REMOVED POSITION KEYS	CONFIGURATION	FIRST ENDWALL	LAST ENDWALL	POLARIZING RIB BETWEEN	COLOUR STRIPE
91717-1001	91715-0005	NONE		OPEN	OPEN	NONE	NONE
91717-1002	91715-0005	b		OPEN	OPEN	NONE	NONE
91717-1003	91715-0005	c		OPEN	OPEN	NONE	NONE
91717-1004	91715-0005	c d e		OPEN	OPEN	NONE	NONE
91717-1005	91715-0405	NONE		OPEN	OPEN	CCT 4&5	NONE
91717-1007	91715-0105	NONE		OPEN	OPEN	CCT 1&2	NONE
91717-1008	91715-0005	d e f		OPEN	OPEN	NONE	RED
91717-1009	91715-0005	a b c		OPEN	OPEN	NONE	RED
91717-1010	91715-0005	a c d e		OPEN	OPEN	NONE	NONE
91717-1011	91715-0005	a c d e		OPEN	OPEN	NONE	BLUE
91717-1012	91715-0005	b c d e		OPEN	OPEN	NONE	NONE
91717-1013	91715-0005	a c e		OPEN	OPEN	NONE	NONE
91717-1014	91715-0005	a e		OPEN	OPEN	NONE	NONE
91717-1015	91715-0005	a e		OPEN	OPEN	NONE	BLACK
91717-1016	91715-0005	d e f		OPEN	OPEN	NONE	NONE
91717-1017	91715-0005	NONE		OPEN	OPEN	NONE	GREEN
91717-1018	91715-0005	d f		OPEN	OPEN	NONE	NONE
91717-1019	91715-0425	NONE		CLOSED	CLOSED	CCT 4&5	NONE
91717-1020	91715-0005	d		OPEN	OPEN	NONE	NONE

4 CIRCUIT							
PART NUMBER	HOUSING USED	REMOVED POSITION KEYS	CONFIGURATION	FIRST ENDWALL	LAST ENDWALL	POLARIZING RIB BETWEEN	COLOUR STRIPE
91717-2001	91715-0007	NONE		OPEN	OPEN	NONE	NONE
91717-2002	91715-0007	a		OPEN	OPEN	NONE	NONE
91717-2003	91715-0007	b		OPEN	OPEN	NONE	NONE
91717-2004	91715-0007	d f		OPEN	OPEN	NONE	NONE
91717-2005	91715-0007	a e g		OPEN	OPEN	NONE	RED
91717-2006	91715-0007	c e		OPEN	OPEN	NONE	NONE
91717-2007	91715-0007	a b d e g		OPEN	OPEN	NONE	NONE
91717-2008	91715-0007	NONE		OPEN	OPEN	NONE	BLUE
91717-2009	91715-0007	a d g		OPEN	OPEN	NONE	BROWN
91717-2010	91715-0007	a b f g h		OPEN	OPEN	NONE	BROWN
91717-2011	91715-0007	NONE		OPEN	OPEN	NONE	GREEN
91717-2014	91715-0007	a c f		OPEN	OPEN	NONE	NONE

NOTES

- + DENOTES TERMINAL VOIDED POSITION
- ⊕ DENOTES TERMINAL LOADED POSITION
- ⊖ DENOTES POLARIZING RIB POSITION
2. MOLEX HOUSING NO. FOR REFERENCE ONLY

THIS DRAWING CONTAINS INFORMATION THAT IS PROPRIETARY TO MOLEX ELECTRONIC TECHNOLOGIES, LLC AND SHOULD NOT BE USED WITHOUT WRITTEN PERMISSION

NO. RELEASE ECNO. (MOLEX) 2016/05/06 DRAWN: CFISHER01 CHKD: CDMONAHAN DATE: 2016/06/12	GENERAL	MM	
	TOLERANCES (UNLESS SPECIFIED)	PRECISION DATE: 2016/05/06	
	ANGULAR TOL ± 0.5 °	CFISHER01 2016/05/06	
	4 PLACES ±	DATE: 2016/06/12	
3 PLACES ± 0.08	CMONAHAN 2016/06/12	APPLI-MATE 2.5 FEMALE 5MM TERMINAL PITCH (MATL: NYLON PA6)	
2 PLACES ± 0.1	DATE: 2016/07/01		
1 PLACE ± 0.2	BRUTTLE 2016/07/01	PRODUCT CUSTOMER DRAWING	
0 PLACES ±	DRAFT WHERE APPLICABLE MUST REMAIN WITHIN DIMENSIONS	SERIES: 91717 INTERIOR NUMBER: CUSTOMER:	
A	A2	DOCUMENT NUMBER: 917170001 DOC TYPE: PSD SHEET NUMBER: 3 OF 4	

13 12 11 10 9 8 7 6 5 4 3 2 1

5 CIRCUIT							
PART NUMBER	HOUSING USED	REMOVED POSITION KEYS	CONFIGURATION	FIRST ENDWALL	LAST ENDWALL	POLARIZING RIB BETWEEN	COLOUR STRIPE
91717-3001	91715-0009	NONE		OPEN	OPEN	NONE	NONE
91717-3002	91715-0009	bcghi		OPEN	OPEN	NONE	GREEN
91717-3003	91715-0009	ALL		OPEN	OPEN	NONE	NONE
91717-3004	91715-0009	NONE		OPEN	OPEN	NONE	RED

8 CIRCUIT							
PART NUMBER	HOUSING USED	REMOVED POSITION KEYS	CONFIGURATION	FIRST ENDWALL	LAST ENDWALL	POLARIZING RIB BETWEEN	COLOUR STRIPE
91717-6001	91715-0015	NONE		OPEN	OPEN	NONE	NONE

6 CIRCUIT							
PART NUMBER	HOUSING USED	REMOVED POSITION KEYS	CONFIGURATION	FIRST ENDWALL	LAST ENDWALL	POLARIZING RIB BETWEEN	COLOUR STRIPE
91717-4001	91715-0011	NONE		OPEN	OPEN	NONE	NONE
91717-4002	91715-0011	bcdefghik		OPEN	OPEN	NONE	NONE
91717-4003	91715-0011	NONE		OPEN	OPEN	NONE	GREEN

9 CIRCUIT							
PART NUMBER	HOUSING USED	REMOVED POSITION KEYS	CONFIGURATION	FIRST ENDWALL	LAST ENDWALL	POLARIZING RIB BETWEEN	COLOUR STRIPE
91717-7001	91715-0017	NONE		OPEN	OPEN	NONE	NONE

7 CIRCUIT							
PART NUMBER	HOUSING USED	REMOVED POSITION KEYS	CONFIGURATION	FIRST ENDWALL	LAST ENDWALL	POLARIZING RIB BETWEEN	COLOUR STRIPE
91717-5001	91715-0013	acegikm		OPEN	OPEN	NONE	NONE

10 CIRCUIT							
PART NUMBER	HOUSING USED	REMOVED POSITION KEYS	CONFIGURATION	FIRST ENDWALL	LAST ENDWALL	POLARIZING RIB BETWEEN	COLOUR STRIPE
91717-8001	91715-0019	NONE		OPEN	OPEN	NONE	NONE

NOTES

- + DENOTES TERMINAL VOIDED POSITION
- ⊕ DENOTES TERMINAL LOADED POSITION
- ⊖ DENOTES POLARIZING RIB POSITION
2. MOLEX HOUSING NO. FOR REFERENCE ONLY

THIS DRAWING CONTAINS INFORMATION THAT IS PROPRIETARY TO MOLEX ELECTRONIC TECHNOLOGIES, LLC AND SHOULD NOT BE USED WITHOUT WRITTEN PERMISSION	
GENERAL TOLERANCES (UNLESS SPECIFIED) ANGULAR TOL ± 0.5° 4 PLACES ± 3 PLACES ± 0.08 2 PLACES ± 0.1 1 PLACE ± 0.2 0 PLACES ± DRAFT WHERE APPLICABLE MUST REMAIN WITHIN DIMENSIONS	PREPARED BY: ZORNOVA, ZORNOVA DRAWN: CFISHER01 CHECKED: CMOYNAHAN DATE: 2016/05/06 DATE: 2016/06/12 DATE: 2016/07/01 APPROVED BY: BRUTTLE DATE: 2016/07/01 DRAWING SIZE: A2 THIRD ANGLE PROJECTION
MOLEX APPLI-MATE 2.5 FEMALE 5MM TERMINAL PITCH (MATL: NYLON PA6)	PRODUCT CUSTOMER DRAWING SERIES: 91717 INTERIOR NUMBER: CUSTOMER:
RELEASE STATUS: P1 RELEASE DATE: 01.07.2016 10:03:05	DOCUMENT NUMBER: 917170001 DOC TYPE: PSD DOC PART NUMBER: 000 SHEET NUMBER: 4 OF 4

13 12 11 10 9 8 7 6 5 4 3 2 1