

Excellent Integrated System Limited

Stocking Distributor

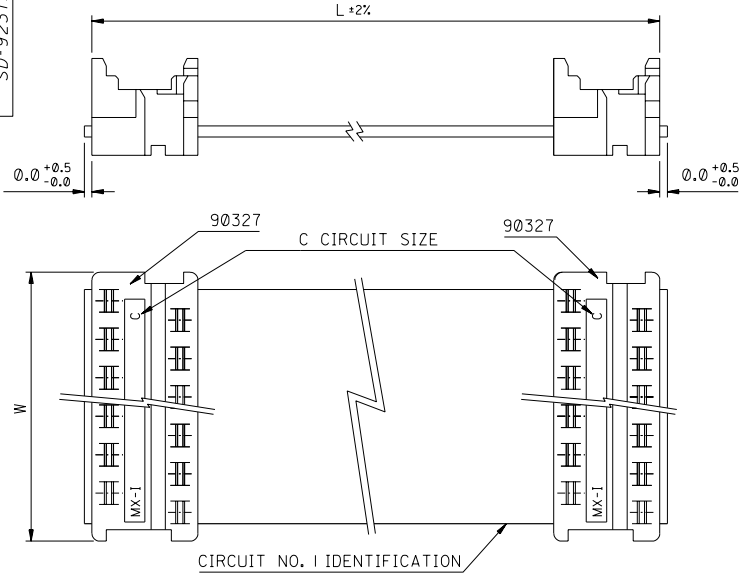
Click to view price, real time Inventory, Delivery & Lifecycle Information:

[Molex Connector Corporation](#)
[0923151025](#)

For any questions, you can email us directly:

sales@integrated-circuit.com

PART NO. SEE CHART
DWG. NO. SD-92315-001



90327 CONNECTOR	
CIRCUIT SIZE	DIMENSION W
4	7.59
6	10.13
8	12.67
10	15.21
12	17.75
14	20.29
16	22.83
18	25.37
20	27.91
22	30.45
24	32.99
26	35.53

CABLE DETAILS:
28 AWG , 1.27 MM PITCH , 7 STRANDS WITH TINNED COPPER , GREY PVC INSULATION WITH A COLOURED POLARITY STRIPE INDICATING CIRCUIT NO. 1, UL 2651.

ORDERING INFORMATION

92315-****
CIRCUIT SIZE
LENGTH L IN CENTIMETRES
LENGTHS AVAILABLE FROM 6 CM TO 120 CM
e.g. 92315-1208 = 12 CIRCUIT WITH LENGTH L OF 8 CM.
NOTE : FOR LENGTHS OF
100 CM , THE PART NO. IS 92315-***01
105 CM , THE PART NO. IS 92315-***02
110 CM , THE PART NO. IS 92315-***03
115 CM , THE PART NO. IS 92315-***04
120 CM , THE PART NO. IS 92315-***05

- NOTES:**
- SEE PRODUCT SPECIFICATIONS PS-99020-0011.
 - SEE TERMINATION SPECIFICATION ES-99033-0001.
 - SEE CABLE SPECIFICATION ES-99027-0006.
 - HARNESSES WILL BE 100% ELECTRICALLY TESTED FOR SHORTS AND DISCONTINUITIES.

ADDED OPTION EC NO. 2002-1088 DRAWING NO. 02/0607 CHK: / / / / APPR: / / / / REV: B	QUALITY SYMBOLS MAJOR = ▽ CRITICAL = ▽	GENERAL TOLERANCES: (UNLESS SPECIFIED): 4 PLACES ±0.1 ±. 3 PLACES ±0.1 ±. 2 PLACES ±0.1 ±. 1 PLACE ±0.1 ±.	SCALE 4 : 1 mm <input checked="" type="checkbox"/> INCH <input type="checkbox"/>	DESIGN UNITS mm <input checked="" type="checkbox"/> INCH <input type="checkbox"/>	THIRD ANGLE PROJECTION <input type="checkbox"/> mm INCH <input type="checkbox"/> INCH mm <input checked="" type="checkbox"/> mm ONLY <input type="checkbox"/>	SHT REV
		DRAWN BY & DATE MCCRAN 98/06/19 CHECKED BY & DATE AMCCANN 98/06/19 APPROVED BY & DATE MWILHITE 98/06/19	TITLE: PICO FLEX IDT TO IDT STANDARD ASSEMBLIES MOLEX INCORPORATED	CAD FILENAME S92315X1.DGN	MATERIAL NO. SEE CHART	DRAWING NO. SD-92315-001

DRAFT WHERE APPLICABLE MUST REMAIN WITHIN DIMENSIONS

THIS DRAWING CONTAINS INFORMATION THAT IS PROPRIETARY TO MOLEX INCORPORATED AND SHOULD NOT BE USED WITHOUT WRITTEN PERMISSION.