

## Excellent Integrated System Limited

Stocking Distributor

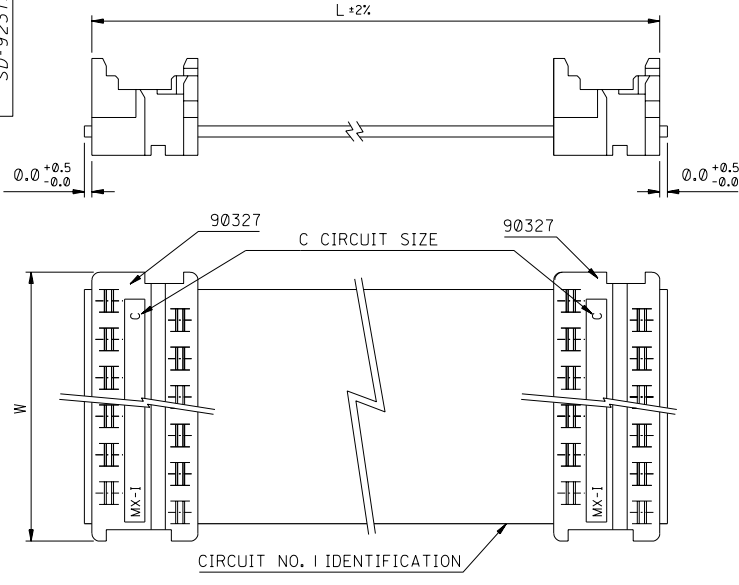
Click to view price, real time Inventory, Delivery & Lifecycle Information:

[Molex Connector Corporation](#)  
[0923151623](#)

For any questions, you can email us directly:

[sales@integrated-circuit.com](mailto:sales@integrated-circuit.com)

PART NO. SEE CHART  
DWG. NO. SD-92315-001



90327 CONNECTOR	
CIRCUIT SIZE	DIMENSION W
4	7.59
6	10.13
8	12.67
10	15.21
12	17.75
14	20.29
16	22.83
18	25.37
20	27.91
22	30.45
24	32.99
26	35.53

**CABLE DETAILS:**  
28 AWG , 1.27 MM PITCH , 7 STRANDS WITH TINNED COPPER , GREY PVC INSULATION WITH A COLOURED POLARITY STRIPE INDICATING CIRCUIT NO. 1, UL 2651.

**ORDERING INFORMATION**

92315-\*\*\*\*  
CIRCUIT SIZE  
LENGTH L IN CENTIMETRES  
LENGTHS AVAILABLE FROM 6 CM TO 120 CM  
e.g. 92315-1208 = 12 CIRCUIT WITH LENGTH L OF 8 CM.  
NOTE : FOR LENGTHS OF  
100 CM , THE PART NO. IS 92315-\*\*\*01  
105 CM , THE PART NO. IS 92315-\*\*\*02  
110 CM , THE PART NO. IS 92315-\*\*\*03  
115 CM , THE PART NO. IS 92315-\*\*\*04  
120 CM , THE PART NO. IS 92315-\*\*\*05

- NOTES:**
- SEE PRODUCT SPECIFICATIONS PS-99020-0011.
  - SEE TERMINATION SPECIFICATION ES-99033-0001.
  - SEE CABLE SPECIFICATION ES-99027-0006.
  - HARNESSES WILL BE 100% ELECTRICALLY TESTED FOR SHORTS AND DISCONTINUITIES.

ADDED OPTION EC NO. 2002-1088 DRAWING NO. 02/0607 CHK: / / / APP: / / / REV: B	QUALITY SYMBOLS MAJOR = ▽ CRITICAL = ▽	GENERAL TOLERANCES: (UNLESS SPECIFIED):	SCALE 4 : 1	DESIGN UNITS <input checked="" type="checkbox"/> mm <input type="checkbox"/> INCH	THIRD ANGLE PROJECTION <input type="checkbox"/> mm <input checked="" type="checkbox"/> INCH	DIMENSIONS: <input type="checkbox"/> mm <input type="checkbox"/> INCH <input checked="" type="checkbox"/> mm ONLY	SHT	REV
		4 PLACES ±0.1	±.	DRAWN BY & DATE MCURRAN 98/06/19	TITLE: PICOFLEX IDT TO IDT STANDARD ASSEMBLIES			
		3 PLACES ±0.1	±.	CHECKED BY & DATE AMCCANN 98/06/19	MOLEX INCORPORATED			
		2 PLACES ±0.1	±.	APPROVED BY & DATE MWILHITE 98/06/19	CAD FILENAME S92315X1.DGN	MATERIAL NO. SEE CHART	DRAWING NO. SD-92315-001	SHEET NO. 1 OF 1
1 PLACE ±0.1	±.	ANGULAR: ± 1/2 °	DRAFT WHERE APPLICABLE MUST REMAIN WITHIN DIMENSIONS					
THIS DRAWING CONTAINS INFORMATION THAT IS PROPRIETARY TO MOLEX INCORPORATED AND SHOULD NOT BE USED WITHOUT WRITTEN PERMISSION.								