

## Excellent Integrated System Limited

Stocking Distributor

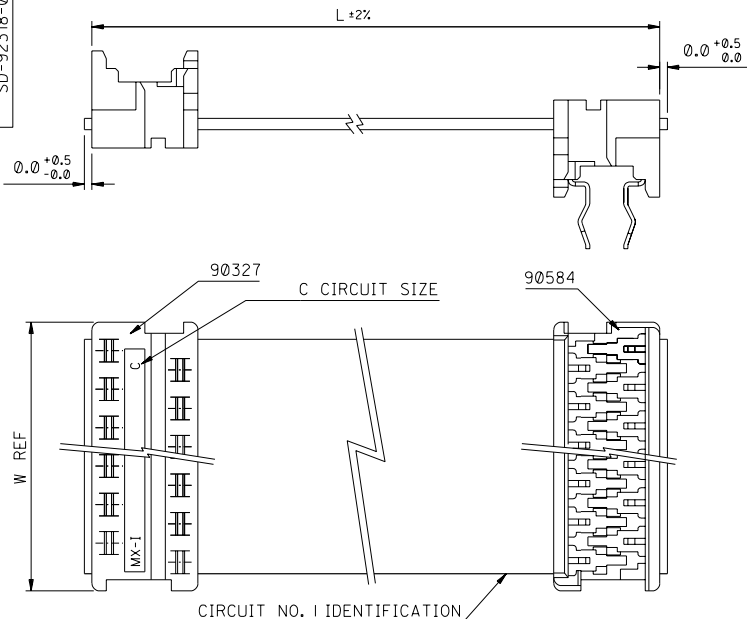
Click to view price, real time Inventory, Delivery & Lifecycle Information:

[Molex Connector Corporation](#)  
[0923180413](#)

For any questions, you can email us directly:

[sales@integrated-circuit.com](mailto:sales@integrated-circuit.com)

PART NO. SEE CHART  
DWG. NO. SD-92318-001



90327 CONNECTOR	
CIRCUIT SIZE	DIMENSION W
4	7.59
6	10.13
8	12.67
10	15.21
12	17.75
14	20.29
16	22.83
18	25.37
20	27.91
22	30.45
24	32.99
26	35.53

90584 CONNECTOR	
CIRCUIT SIZE	DIMENSION W
4	7.59
6	10.13
8	12.67
10	15.21
12	17.75
14	20.29
16	22.83
18	25.37
20	27.91
22	30.45
24	32.99
26	35.53

CABLE DETAILS:  
28 AWG, 1.27 MM PITCH, 7 STRANDS WITH TINNED COPPER, GREY PVC INSULATION WITH A COLOURED POLARITY STRIPE INDICATING CIRCUIT NO. 1, UL 2651.

- NOTES:
1. SEE PRODUCT SPECIFICATIONS PS-99020-0011.
  2. SEE TERMINATION SPECIFICATION ES-99033-0001.
  3. SEE TERMINATION SPECIFICATION ES-99033-0002.
  4. SEE CABLE SPECIFICATION ES-99027-0006.
  5. HARNESSES WILL BE 100% ELECTRICALLY TESTED FOR SHORTS AND DISCONTINUITIES.

**ORDERING INFORMATION**

92318-\*\*\*\*  
CIRCUIT SIZE  
LENGTH L IN CENTIMETRES  
LENGTHS AVAILABLE FROM 6 CM TO 120 CM  
e.g. 92318-1208 = 12 CIRCUIT WITH LENGTH L OF 8 CM.

NOTE : FOR LENGTHS OF  
100 CM, THE PART NO. IS 92318-\*\*\*01  
105 CM, THE PART NO. IS 92318-\*\*\*02  
110 CM, THE PART NO. IS 92318-\*\*\*03  
115 CM, THE PART NO. IS 92318-\*\*\*04  
120 CM, THE PART NO. IS 92318-\*\*\*05

REF DIM ADDED EC NO. 2003-0499 DRAWN: F.TNN 02/11/13 CHK: / / / / APPR: / / / /	QUALITY SYMBOLS MAJOR = CRITICAL =	GENERAL TOLERANCES: (UNLESS SPECIFIED):	SCALE 4 : 1	DESIGN UNITS <input checked="" type="checkbox"/> mm <input type="checkbox"/> INCH	THIRD ANGLE PROJECTION <input type="checkbox"/> mm <input type="checkbox"/> INCH <input checked="" type="checkbox"/> mm ONLY	DIMENSIONS:	SHT REV	
		4 PLACES ±0.1 ±. 3 PLACES ±0.1 ±. 2 PLACES ±0.1 ±. 1 PLACE ±0.1 ±.	DRAWN BY & DATE MCCRAN 98/06/24 CHECKED BY & DATE AMCCANN 98/06/24 APPROVED BY & DATE MWILHITE 98/06/24	CAD FILENAME	TITLE: PICOFLEX IDT TO BOARD-IN STANDARD ASSEMBLIES (Z-STYLE)	MOLEX INCORPORATED	MATERIAL NO. SEE CHART	DRAWING NO. SD-92318-001
DRAFT WHERE APPLICABLE MUST REMAIN WITHIN DIMENSIONS		THIS DRAWING CONTAINS INFORMATION THAT IS PROPRIETARY TO MOLEX INCORPORATED AND SHOULD NOT BE USED WITHOUT WRITTEN PERMISSION.						SIZE B