

Excellent Integrated System Limited

Stocking Distributor

Click to view price, real time Inventory, Delivery & Lifecycle Information:

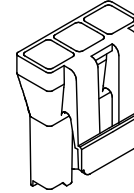
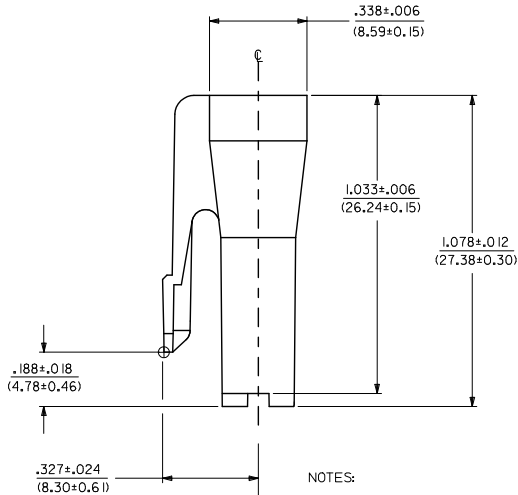
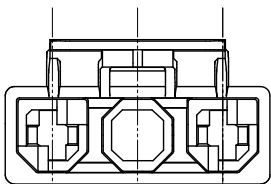
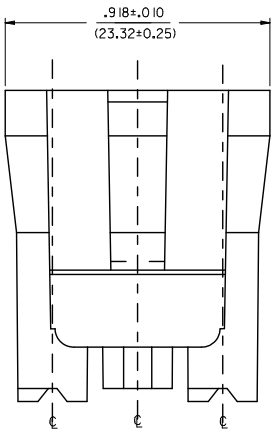
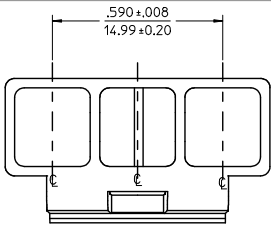
[Molex Connector Corporation](#)
[0433352103](#)

For any questions, you can email us directly:

sales@integrated-circuit.com

ITEM NUMBER	MATERIAL	COLOR
43335-1103	A	NATURAL
43335-2103	B	BLACK
X 43335-3103	A	RED
X 43335-4103	A	BLUE
43335-7103	D	BLACK

X = NOT RELEASED TO PRODUCTION



43335-*103
(SCALE 2:1)

NOTES:

- MATERIAL: A: NYLON, PA66, UL94V-2, COLOR: SEE CHART.
B: UL94V-0, PA66, NYLON.
D: NYLON, UL94V-2, COLOR: BLACK, IEC 60335-1 GLOW WIRE CAPABLE.
- FINISH: NONE.
- PRODUCT SPECIFICATION: PSX-43335-9999.
- PACKAGING INFORMATION: PK-43335-001.
- THIS CONNECTOR HOUSING FOR USE WITH 43375-****.
- THIS CONNECTOR HOUSING WILL MATE TO A-43160-***3 AND 43384-***3 HOUSINGS.
- PARTS CONFORM TO CLASS 'B' REQUIREMENTS OF COSMETIC SPECIFICATION PS-45499-002 EXCEPT MATERIAL OPTION 'B' MEETS CLASS 'C' REQUIREMENTS FOR SINK AND DISCOLORATION.

CORRECT TOLERANCE IEC NO: UCP2014-5424 DRAWN: JIFUX 2014/06/26 CHK: BANDESON 2014/06/26 APPROV: SMITH 2014/07/09	QUALITY SYMBOLS ∇=0 ∇=0 ∇=0	GENERAL TOLERANCES (UNLESS SPECIFIED)		DIMENSION STYLE		SCALE	DESIGN UNITS	THIRD ANGLE PROJECTION
		mm	INCH	IN/MM		4:1	INCH	
		4 PLACES ±---	±---	DRAWN BY	DATE	TITLE 3-CKT RECEPTACLE HOUSING W/TPA .125X.020 FLAT BLADE CENTER VOID molex		
		3 PLACES ±---	±.005	MAB	08/15/95			
2 PLACES ±0.13	±.01	CHECKED BY	DATE					
1 PLACE ±0.25	±---	KBP	08/15/95	MATERIAL NO. SD-43335-*103 DOCUMENT NO.		SHEET NO.		
0 PLACE ±	±	APPROVED BY	DATE	SEE CHART		1 OF 1		
ANGULAR ±1/2° DRAFT WHERE APPLICABLE MUST REMAIN WITHIN DIMENSIONS		RAS	08/15/95	THIS DRAWING CONTAINS INFORMATION THAT IS PROPRIETARY TO MOLEX INCORPORATED AND SHOULD NOT BE USED WITHOUT WRITTEN PERMISSION				