

Excellent Integrated System Limited

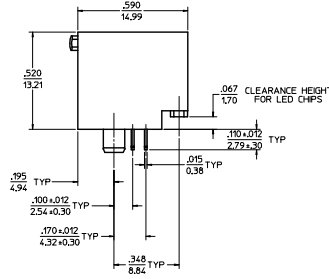
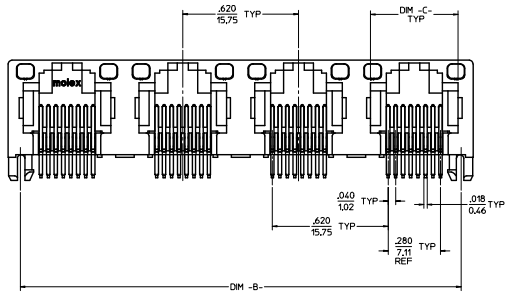
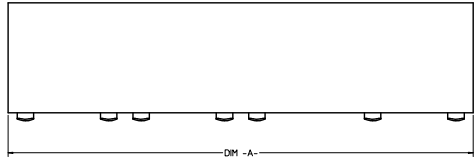
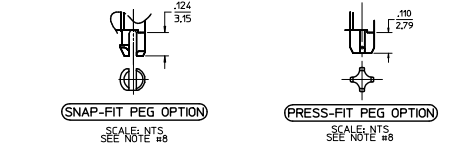
Stocking Distributor

Click to view price, real time Inventory, Delivery & Lifecycle Information:

[Molex Connector Corporation](#)
[0442480045](#)

For any questions, you can email us directly:

sales@integrated-circuit.com



8 CIRCUIT HOUSING(S)						
ASSEMBLY MATERIAL NUMBER	NUMBER OF CIRCUITS	NUMBER OF PORTS	PEG STYLE	DIM -A-	DIM -B-	DIM -C-
44248-0001	8	2	SNAP-FIT	1.250/31.75	1.120/28.45	.469/11.92
44248-0002	8	4	SNAP-FIT	2.490/63.25	2.360/59.94	.469/11.92
44248-0005	8	2	PRESS-FIT	1.250/31.75	1.120/28.45	.469/11.92
44248-0006	8	4	PRESS-FIT	2.490/63.25	2.360/59.94	.469/11.92

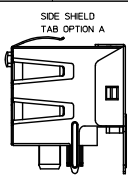
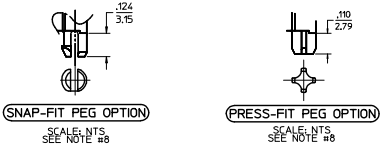
6 CIRCUIT HOUSING(S)						
ASSEMBLY MATERIAL NUMBER	NUMBER OF CIRCUITS	NUMBER OF PORTS	PEG STYLE	DIM -A-	DIM -B-	DIM -C-
44248-0009	6	2	SNAP-FIT	1.250/31.75	1.120/28.45	.389/9.88
44248-0010	4	2	SNAP-FIT	1.250/31.75	1.120/28.45	.389/9.88
44248-0011	6	4	SNAP-FIT	2.490/63.25	2.360/59.94	.389/9.88
44248-0012	4	4	SNAP-FIT	2.490/63.25	2.360/59.94	.389/9.88
44248-0017	6	2	PRESS-FIT	1.250/31.75	1.120/28.45	.389/9.88
44248-0018	4	2	PRESS-FIT	1.250/31.75	1.120/28.45	.389/9.88
44248-0019	6	4	PRESS-FIT	2.490/63.25	2.360/59.94	.389/9.88
44248-0020	4	4	PRESS-FIT	2.490/63.25	2.360/59.94	.389/9.88

- NOTES:
 1) MATERIAL:
 HOUSING: POLYESTER(PBT), GLASS FILLED, UL94V-0, COLOR: BLACK
 LIGHT PIPES: POLYCARBONATE, UL-94V2, COLOR: CLEAR
 TERMINALS: PHOSPHOR BRONZE
 2) FINISH:
 TERMINALS:
 SELECT GOLD IN CONTACT AREA: 50 MICRONS (127 MICROMETERS) MIN.
 SELECT TRN IN PC TAIL AREA: 100 MICRONS (254 MICROMETERS) MIN.
 WITH OVERALL NICKEL UNDERLAY: 50 MICRONS (127 MICROMETERS) MIN.
 3) PRODUCT SPECIFICATION AND PROCESSING PARAMETERS: PS-43860-003.
 4) PACKAGING SPECIFICATION:
 CONNECTOR ASSEMBLIES IN THERMOFORMED TRAYS PER MOLEX PACKAGING SPECIFICATION PK-44248-004.
 5) APPLICATION SPECIFICATION: AS-43860-001
 6) ALL UNTOLERANCED DIMENSIONS ARE SHOWN FOR REFERENCE ONLY.
 7) CONFORMS TO FCC REGULATION PART 685 FOR MODULAR JACKS.
 8) MODJACKS AVAILABLE WITH EITHER SNAP-FIT OR PRESS-FIT PEGS.
 THIS DRAWING SHOWS SNAP-FIT PEGS.
 9) PCB LAYOUT AND PANEL CUT-OUT SHOWN ON SHEETS (5) AND (6).
 10) THIS PART CONFORMS TO CLASS B REQUIREMENTS OF COSMETIC SPECIFICATION PS-45499-002.

UNSHIELDED WITH LIGHT PIPES

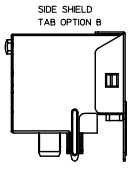
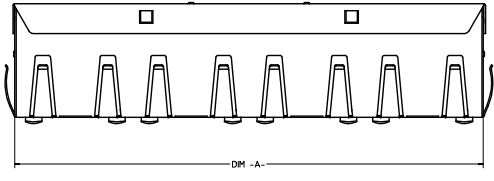
ADD TAIL TOI EC NO. UEP7003-4879 DRAWN/REVISED CHKD/BELL APPROVED/MS DATE 2010/05/09 2010/05/09 2010/06/02 2010/06/02	QUALITY SYMBOLS	GENERAL TOLERANCES (UNLESS SPECIFIED)	DIMENSION STYLE	SCALE	DESIGN UNITS	THIRD ANGLE PROJECTION	
	$\nabla=0$ $\nabla=0$ $\nabla=0$	mm INCH 4 PLACES ± --- ± --- 3 PLACES ± --- ± .010 2 PLACES ± 0.25 ± --- 1 PLACE ± --- ± --- 0 PLACE ± --- ± ---	IN/MM DRAWN BY M MAYO CHECKED BY J ROBERTS APPROVED BY J ROBERTS	DATE 98/10/06 DATE 98/10/06 DATE 98/10/06	4:1	INCH	
	MATERIAL NO. SEE CHART DRAFT WHERE APPLICABLE MUST REMAIN WITHIN DIMENSIONS			TITLE GANGED INVERTED MODJACK ASSEMBLY			
	SHEET NO. 1 OF 6 DOCUMENT NO. SD-44248-001						

20 19 18 17 16 15 14 13 12 11 10 9 8 7 6 5 4 3 2 1



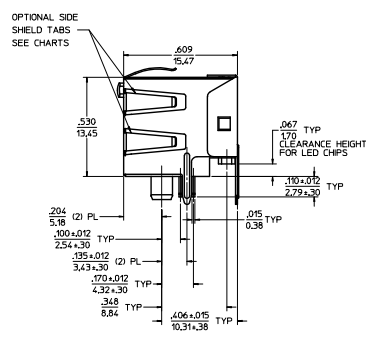
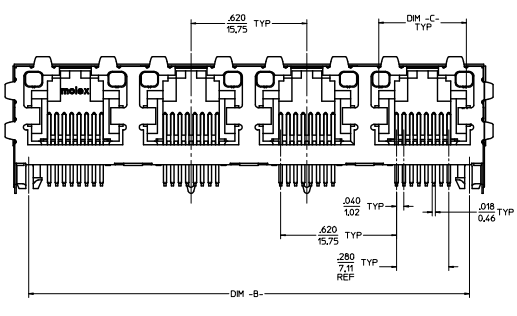
(8) CIRCUIT HOUSING(S)

ASSEMBLY MATERIAL NUMBER	NUMBER OF CIRCUITS	NUMBER OF PORTS	PEG STYLE	SIDE SHIELD TAB OPTION	DIM -A-	DIM -B-	DIM -C-
44248-0029	8	2	SNAP-FIT	A	1,274/32.36	1,120/28.45	.469/11.92
44248-0030	8	4	SNAP-FIT	A	2,514/63.86	2,360/59.94	.469/11.92
44248-0033	8	2	PRESS-FIT	A	1,274/32.36	1,120/28.45	.469/11.92
44248-0034	8	4	PRESS-FIT	A	2,514/63.86	2,360/59.94	.469/11.92



(6) CIRCUIT HOUSING(S)

ASSEMBLY MATERIAL NUMBER	NUMBER OF CIRCUITS	NUMBER OF PORTS	PEG STYLE	SIDE SHIELD TAB OPTION	DIM -A-	DIM -B-	DIM -C-
44248-0037	6	2	SNAP-FIT	A	1,274/32.36	1,120/28.45	.389/9.88
44248-0038	4	2	SNAP-FIT	A	1,274/32.36	1,120/28.45	.389/9.88
44248-0039	6	4	SNAP-FIT	A	2,514/63.86	2,360/59.94	.389/9.88
44248-0040	4	4	SNAP-FIT	A	2,514/63.86	2,360/59.94	.389/9.88
44248-0045	6	2	PRESS-FIT	A	1,274/32.36	1,120/28.45	.389/9.88
44248-0046	4	2	PRESS-FIT	A	1,274/32.36	1,120/28.45	.389/9.88
44248-0047	6	4	PRESS-FIT	A	2,514/63.86	2,360/59.94	.389/9.88
44248-0048	4	4	PRESS-FIT	A	2,514/63.86	2,360/59.94	.389/9.88

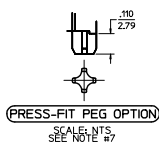
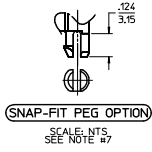


- NOTES:**
- 1) MATERIAL:
HOUSING: POLYESTER(PBT), GLASS FILLED, UL94V-0, COLOR: BLACK
LIGHT PIPES: POLYCARBONATE, UL-94V2, COLOR: CLEAR
TERMINALS: PHOSPHOR BRONZE
SHIELD: BRASS
 - 2) FINISH:
TERMINALS:
SELECT GOLD IN CONTACT AREA: 50 MICRONS (1.27 MICROMETERS) MIN.
SELECT TIN IN PC TAIL AREA: 100 MICRONS (2.54 MICROMETERS) MIN.
WITH OVERALL NICKEL UNDERPLATE: 50 MICRONS (1.27 MICROMETERS) MIN.
SHIELD:
100 MICRONS (2.54 MICROMETERS) NICKEL OVER 50 MICRONS (1.27 MICROMETERS) COPPER UNDERPLATE PCB GROUND TABS DIPPED IN TIN
 - 3) PRODUCT SPECIFICATION AND PROCESSING PARAMETERS: PS-43860-003.
 - 4) PACKAGING SPECIFICATION:
CONNECTOR ASSEMBLIES IN THERMOFORMED TRAYS PER MOLEX PACKAGING SPECIFICATION PK-44248-004.
 - 5) APPLICATION SPECIFICATION: AS-43860-001
 - 6) ALL UNTOLERANCED DIMENSIONS ARE SHOWN FOR REFERENCE ONLY.
 - 7) CONFORMS TO FCC REGULATION PART 68.5 FOR MODULAR JACKS.
 - 8) MODULARS AVAILABLE WITH EITHER SNAP-FIT OR PRESS-FIT PEGS.
THIS DRAWING SHOWS SNAP-FIT PEGS.
 - 9) PCB LAYOUT AND PANEL CUT-OUT SHOWN ON SHEETS (5) AND (6).
 - 10) THIS PART CONFORMS TO CLASS B REQUIREMENTS OF COSMETIC SPECIFICATION PS-45499-002.

SHIELDED WITH LIGHT PIPES

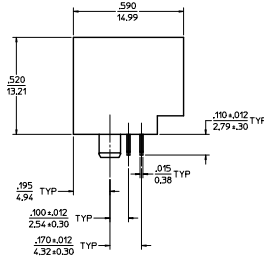
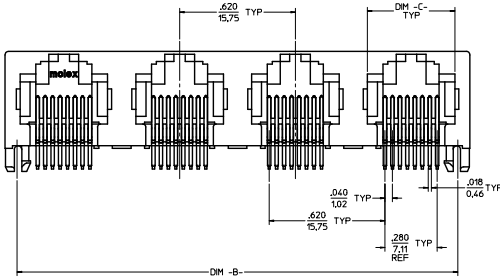
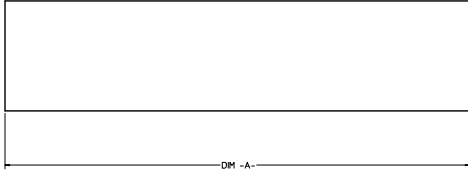
SEE SHEET 1 SEC. NO. 44248-0045 DRAWING NO. 2010/05/06 CHKD BY: CHOKIBELL APPR BY: JROBERTS DATE: 2010/10/06	QUALITY SYMBOLS	GENERAL TOLERANCES (UNLESS SPECIFIED)	DIMENSION STYLE IN/MM	SCALE 4:1	DESIGN UNITS INCH	THIRD ANGLE PROJECTION	
	∇=0 ∇=0 ∇=0	4 PLACES ± .010 3 PLACES ± .010 2 PLACES ± .025 1 PLACE ± .010 0 PLACE ± .010	mm INCH ± .010 ± .025 ± .010	DRAWN BY: MMAYO CHECKED BY: JROBERTS APPROVED BY: JROBERTS DATE: 98/10/06	DATE: 98/10/06	TITLE: GANGED INVERTED MODJACK ASSEMBLY	MATERIAL NO. SEE CHART DOCUMENT NO. SD-44248-001
	SEE SHEET 1 SEC. NO. 44248-0045 DRAWING NO. 2010/05/06 CHKD BY: CHOKIBELL APPR BY: JROBERTS DATE: 2010/10/06	ANGULAR ±1/2° DRAFT WHERE APPLICABLE MUST REMAIN WITHIN DIMENSIONS	SEE CHART THIS DRAWING CONTAINS INFORMATION THAT IS PROPRIETARY TO MOLEX INCORPORATED AND SHOULD NOT BE USED WITHOUT WRITTEN PERMISSION	SHEET NO. 2 OF 6			
	MOLEX						SHEET NO. 2 OF 6

Rev. 0, 04/11/11



8 CIRCUIT HOUSING(S)						
ASSEMBLY MATERIAL NUMBER	NUMBER OF CIRCUITS	NUMBER OF PORTS	PEG STYLE	DIM -A-	DIM -B-	DIM -C-
44248-0057	8	2	SNAP-FIT	1,250/31.75	1,120/28.45	.469/11.92
44248-0058	8	4	SNAP-FIT	2,490/63.25	2,360/59.94	.469/11.92
44248-0061	8	2	PRESS-FIT	1,250/31.75	1,120/28.45	.469/11.92
44248-0062	8	4	PRESS-FIT	2,490/63.25	2,360/59.94	.469/11.92

6 CIRCUIT HOUSING(S)						
ASSEMBLY MATERIAL NUMBER	NUMBER OF CIRCUITS	NUMBER OF PORTS	PEG STYLE	DIM -A-	DIM -B-	DIM -C-
44248-0065	6	2	SNAP-FIT	1,250/31.75	1,120/28.45	.389/9.88
44248-0066	4	2	SNAP-FIT	1,250/31.75	1,120/28.45	.389/9.88
44248-0067	6	4	SNAP-FIT	2,490/63.25	2,360/59.94	.389/9.88
44248-0068	4	4	SNAP-FIT	2,490/63.25	2,360/59.94	.389/9.88
44248-0073	6	2	PRESS-FIT	1,250/31.75	1,120/28.45	.389/9.88
44248-0074	4	2	PRESS-FIT	1,250/31.75	1,120/28.45	.389/9.88
44248-0075	6	4	PRESS-FIT	2,490/63.25	2,360/59.94	.389/9.88
44248-0076	4	4	PRESS-FIT	2,490/63.25	2,360/59.94	.389/9.88



- NOTES:
- MATERIAL: HOUSING: POLYESTER(PBT), GLASS FILLED, UL94V-0, COLOR: BLACK
TERMINALS: PHOSPHOR BRONZE
 - FINISH: TERMINALS: SELECT GOLD IN CONTACT AREA; 50 MICRONS (1.27 MICROMETERS) MIN. WITH OVERALL NICKEL UNDERPLATE; 50 MICRONS (1.27 MICROMETERS) MIN.
 - PRODUCT SPECIFICATION AND PROCESSING PARAMETERS: PS-4260-003
 - PACKAGING SPECIFICATIONS: CONNECTOR ASSEMBLIES IN THERMOFORMED TRAYS PER MOLEX PACKAGING SPECIFICATION PK-42248-004.
 - ALL UNTOLERANCED DIMENSIONS ARE SHOWN FOR REFERENCE ONLY.
 - CONFORMS TO FCC REGULATION PART 68.5 FOR MODULAR JACKS.
 - MODJACKS AVAILABLE WITH EITHER SNAP-FIT OR PRESS-FIT PEGS. THIS DRAWING SHOWS SNAP-FIT PEGS.
 - PCB LAYOUT AND PANEL CUT-OUT SHOWN ON SHEETS (5) AND (6).
 - THIS PART CONFORMS TO CLASS B REQUIREMENTS OF COSMETIC SPECIFICATION PS-45499-002.

UNSHIELDED

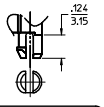
SEE SHEET 1 REC. NO. 1027013-4879 DRAWING/REV. 2010/05/09 CHK'D/BELL 2010/05/09 APPR'D/SMT 2010/06/02 DATE	QUALITY SYMBOLS	GENERAL TOLERANCES (UNLESS SPECIFIED)	DIMENSION STYLE IN/MM	SCALE 4:1	DESIGN UNITS INCH	THIRD ANGLE PROJECTION	
	∇=0 ∇=0 ∇=0	4 PLACES ±.000 3 PLACES ±.010 2 PLACES ±0.25 1 PLACE ±.000 0 PLACE ±	mm INCH ±.000 ±.000 ±.010 ±.010 ±.025 ±.025 ±.000 ±.000 ±.000 ±.000	DRAWN BY MMAYO CHECKED BY JROBERTS APPROVED BY JROBERTS DATE 98/10/06 DATE 98/10/06 DATE 98/10/06			
		DRAFT WHERE APPLICABLE MUST REMAIN WITHIN DIMENSIONS	MATERIAL NO. SEE CHART	DOCUMENT NO. SD-44248-001			
							SHEET NO. 3 OF 6

molex

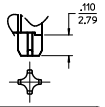
GANGED INVERTED MODJACK ASSEMBLY

INCORPORATED AND SHOULD NOT BE USED WITHOUT WRITTEN PERMISSION

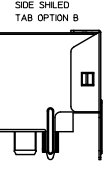
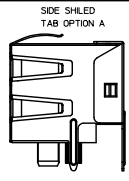
20 19 18 17 16 15 14 13 12 11 10 9 8 7 6 5 4 3 2 1



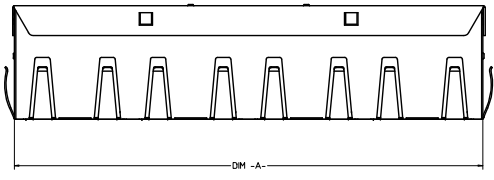
SNAP-FIT PEG OPTION
SCALE: NTS. SEE NOTE #7



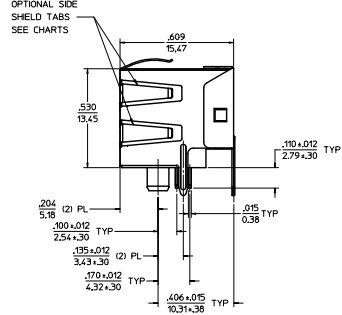
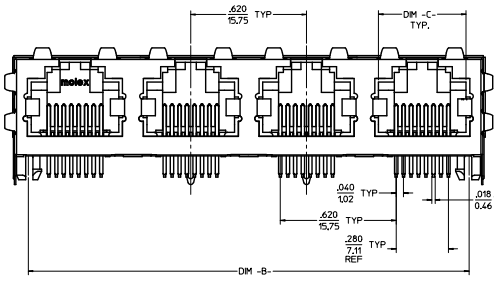
PRESS-FIT PEG OPTION
SCALE: NTS. SEE NOTE #7



(8) CIRCUIT HOUSING(S)							
ASSEMBLY MATERIAL NUMBER	NUMBER OF CIRCUITS	NUMBER OF PORTS	PEG STYLE	SIDE SHIELD TAB OPTION	DIM -A-	DIM -B-	DIM -C-
X - NOT TOOLED							
44248-0085	8	2	SNAP-FIT	A	1.274/32.36	1.120/28.45	.469/11.92
44248-0086	8	4	SNAP-FIT	A	2.514/63.86	2.360/59.94	.469/11.92
44248-0089	8	2	PRESS-FIT	A	1.274/32.36	1.120/28.45	.469/11.92
44248-0090	8	4	PRESS-FIT	A	2.514/63.86	2.360/59.94	.469/11.92
X 44248-0119	8	4	PRESS FIT	B	2.514/63.86	2.360/59.94	.469/11.92



(6) CIRCUIT HOUSING(S)							
ASSEMBLY MATERIAL NUMBER	NUMBER OF CIRCUITS	NUMBER OF PORTS	PEG STYLE	SIDE SHIELD TAB OPTION	DIM -A-	DIM -B-	DIM -C-
44248-0093	6	2	SNAP-FIT	A	1.274/32.36	1.120/28.45	.389/9.88
44248-0094	4	2	SNAP-FIT	A	1.274/32.36	1.120/28.45	.389/9.88
44248-0095	6	4	SNAP-FIT	A	2.514/63.86	2.360/59.94	.389/9.88
44248-0096	4	4	SNAP-FIT	A	2.514/63.86	2.360/59.94	.389/9.88
44248-0101	6	2	PRESS-FIT	A	1.274/32.36	1.120/28.45	.389/9.88
44248-0102	4	2	PRESS-FIT	A	1.274/32.36	1.120/28.45	.389/9.88
44248-0103	6	4	PRESS-FIT	A	2.514/63.86	2.360/59.94	.389/9.88
44248-0104	4	4	PRESS-FIT	A	2.514/63.86	2.360/59.94	.389/9.88



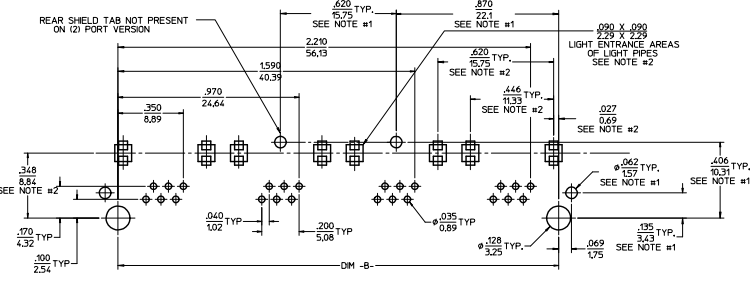
- NOTES:
 1) MATERIAL: HOUSING: POLYESTER(PBT), GLASS FILLED, UL94V-0, COLOR: BLACK
 TERMINALS: PHOSPHOR BRONZE SHIELD: BRASS
 2) FINISH: TERMINALS: SELECT GOLD IN CONTACT AREA: 50 MICRONS (1.27 MICROMETERS) MIN. SELECT TIN IN PC TAIL AREA: 100 MICRONS (2.54 MICROMETERS) MIN. WITH OVERALL NICKEL UNDERPLATE: 50 MICRONS (1.27 MICROMETERS) MIN. SHIELD: 100 MICRONS (2.54 MICROMETERS) NICKEL OVER 50 MICRONS (1.27 MICROMETERS) COPPER UNDERPLATE FOR GROUND TABS DIPPED IN TIN.
 3) PRODUCT SPECIFICATION AND PROCESSING PARAMETERS: PS-43860-003.
 4) PACKAGING SPECIFICATION: CONNECTOR ASSEMBLES IN THERMOFORMED TRAYS PER MOLEX PACKAGING SPECIFICATION PK-44248-004.
 5) ALL UNTOLERANCED DIMENSIONS ARE SHOWN FOR REFERENCE ONLY.
 6) CONFORMS TO FCC REGULATION PART 48.5 FOR MODULAR JACKS.
 7) MODJACKS AVAILABLE WITH EITHER SNAP-FIT OR PRESS-FIT PEGS.
 8) PCB LAYOUT AND PANEL CUT-OUT SHOWN ON SHEETS (5) AND (6).
 9) THIS PART CONFORMS TO CLASS B REQUIREMENTS OF COSMETIC SPECIFICATION PS-45499-002.

SHIELDED

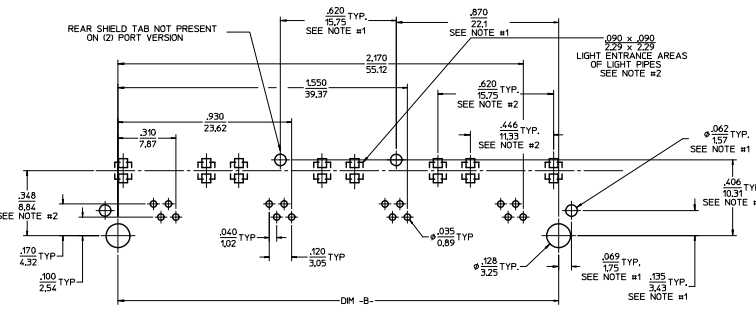
SEE SHEET 1 REC. NO. MFP203-4879 DRAWN BY: CHEN/MB/WH CHECKED BY: JACQUES/MB/WH APPROVED BY: JACQUES/MB/WH DATE: 2010/05/09 2010/05/09	QUALITY SYMBOLS ∇=0 ∇=0 ∇=0	GENERAL TOLERANCES (UNLESS SPECIFIED) mm INCH 4 PLACES ± .100 3 PLACES ± .125 2 PLACES ± .150 1 PLACE ± .200 0 PLACE ± .300 ANGULAR ±1/2° DRAFT WHERE APPLICABLE MUST REMAIN WITHIN DIMENSIONS	DIMENSION STYLE IN/MM DRAWN BY: MMAYO DATE: 98/10/06 CHECKED BY: JROBERTS DATE: 98/10/06 APPROVED BY: JROBERTS DATE: 98/10/06	SCALE 4:1 DESIGN UNITS INCH THIRD ANGLE PROJECTION	GANGED INVERTED MODJACK ASSEMBLY 	MATERIAL NO. SEE CHART DOCUMENT NO. SD-44248-001 SHEET NO. 4 OF 6
	THIS DRAWING CONTAINS INFORMATION THAT IS PROPRIETARY TO MOLEX INCORPORATED AND SHOULD NOT BE USED WITHOUT WRITTEN PERMISSION					

19 18 17 16 15 14 13 12 11 10 9 8 7 6 5 4 3 2 1

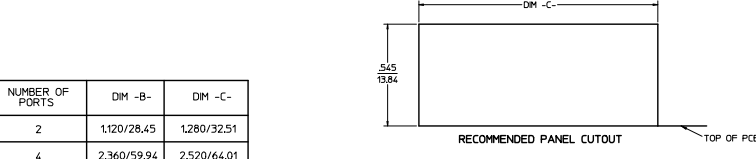
20 19 18 17 16 15 14 13 12 11 10 9 8 7 6 5 4 3 2 1



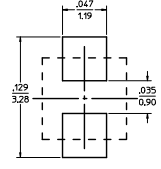
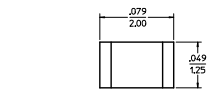
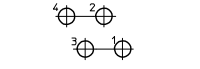
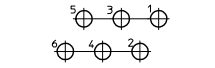
6 CIRCUIT PCB LAYOUT: COMPONENT SIDE
RECOMMENDED PCB THICKNESS: .062/157
TOLERANCE ±.003/.076 UNLESS OTHERWISE SPECIFIED



4 CIRCUIT PCB LAYOUT: COMPONENT SIDE
RECOMMENDED PCB THICKNESS: .062/157
TOLERANCE ±.003/.076 UNLESS OTHERWISE SPECIFIED



NUMBER OF PORTS	DIM -B-	DIM -C-
2	1,120/28,45	1,280/32,51
4	2,360/59,94	2,520/64,01



- NOTES:
- 1) DIMENSIONS MARKED "SEE NOTE #1" REFER TO ASSEMBLIES WITH SHIELDING OPTION INCLUDED
 - 2) DIMENSIONS MARKED "SEE NOTE #2" REFER TO ASSEMBLIES WITH THE LIGHT PIPE OPTION INCLUDED
 - 3) FOR CROSS REFERENCE OF RECOMMENDED LEDS SEE MOLEX WEB SITE.

SEE SHEET 1 REC. NO. 107203-4879 2013/05/09 CHIKO BELL APPROVED TEL: 03-6263-0343 FAX: 03-6263-0344	QUALITY SYMBOLS	GENERAL TOLERANCES (UNLESS SPECIFIED)	DIMENSION STYLE	SCALE	DESIGN UNITS	THIRD ANGLE PROJECTION	
	∇=0 ∇=0 ∇=0	mm INCH 4 PLACES ±.010 3 PLACES ±.025 2 PLACES ±.050 1 PLACE ±.100 0 PLACE ±.200	IN/MM	4:1	INCH	DRAWN BY: MMAYO CHECKED BY: JROBERTS APPROVED BY: JROBERTS DATE: 98/10/06 DATE: 98/10/06 DATE: 98/10/06	GANGED INVERTED MODJACK ASSEMBLY
	ANGULAR ±1/2° DRAFT WHERE APPLICABLE MUST REMAIN WITHIN DIMENSIONS	MATERIAL: N/A SIZE: D	DRAWING NO. SD-44248-001 SHEET NO. 6 OF 6	THIS DRAWING CONTAINS INFORMATION THAT IS PROPRIETARY TO MOLEX INCORPORATED AND SHOULD NOT BE USED WITHOUT WRITTEN PERMISSION			

19 18 17 16 15 14 13 12 11 10 9 8 7 6 5 4 3 2 1