

## Excellent Integrated System Limited

Stocking Distributor

Click to view price, real time Inventory, Delivery & Lifecycle Information:

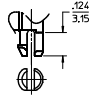
[Molex Connector Corporation](#)  
[0442480057](#)

For any questions, you can email us directly:

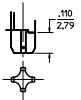
[sales@integrated-circuit.com](mailto:sales@integrated-circuit.com)

8 CIRCUIT HOUSING(S)						
ASSEMBLY MATERIAL NUMBER	NUMBER OF CIRCUITS	NUMBER OF PORTS	PEG STYLE	DIM -A-	DIM -B-	DIM -C-
44248-0001	8	2	SNAP-FIT	1,250/31.75	1,120/28.45	.469/11.92
44248-0002	8	4	SNAP-FIT	2,490/63.25	2,360/59.94	.469/11.92
44248-0005	8	2	PRESS-FIT	1,250/31.75	1,120/28.45	.469/11.92
44248-0006	8	4	PRESS-FIT	2,490/63.25	2,360/59.94	.469/11.92

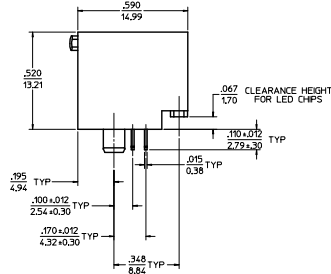
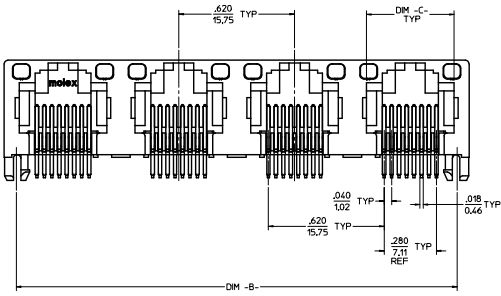
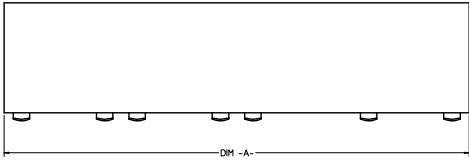
6 CIRCUIT HOUSING(S)						
ASSEMBLY MATERIAL NUMBER	NUMBER OF CIRCUITS	NUMBER OF PORTS	PEG STYLE	DIM -A-	DIM -B-	DIM -C-
44248-0009	6	2	SNAP-FIT	1,250/31.75	1,120/28.45	.389/9.88
44248-0010	4	2	SNAP-FIT	1,250/31.75	1,120/28.45	.389/9.88
44248-0011	6	4	SNAP-FIT	2,490/63.25	2,360/59.94	.389/9.88
44248-0012	4	4	SNAP-FIT	2,490/63.25	2,360/59.94	.389/9.88
44248-0017	6	2	PRESS-FIT	1,250/31.75	1,120/28.45	.389/9.88
44248-0018	4	2	PRESS-FIT	1,250/31.75	1,120/28.45	.389/9.88
44248-0019	6	4	PRESS-FIT	2,490/63.25	2,360/59.94	.389/9.88
44248-0020	4	4	PRESS-FIT	2,490/63.25	2,360/59.94	.389/9.88



**SNAP-FIT PEG OPTION**  
SCALE: NTS  
SEE NOTE #8



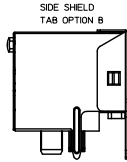
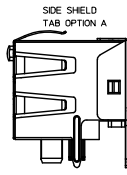
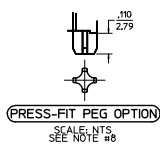
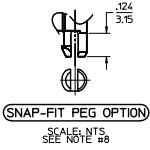
**PRESS-FIT PEG OPTION**  
SCALE: NTS  
SEE NOTE #8



- NOTES:  
1) MATERIAL:  
HOUSING: POLYESTER(PBT), GLASS FILLED, UL94V-0, COLOR: BLACK  
LIGHT PIPES: POLYCARBONATE, UL-94V2, COLOR: CLEAR  
TERMINALS: PHOSPHOR BRONZE  
2) FINISH:  
TERMINALS:  
SELECT GOLD IN CONTACT AREA: 50 MICRONCHES (.127 MICROMETERS) MIN.  
SELECT TRN IN PC TAIL AREA: 100 MICRONCHES (.254 MICROMETERS) MIN.  
WITH OVERALL NICKEL UNDERLAY: 50 MICRONCHES (.127 MICROMETERS) MIN.  
3) PRODUCT SPECIFICATION AND PROCESSING PARAMETERS: PS-43860-003.  
4) PACKAGING SPECIFICATION:  
CONNECTOR ASSEMBLIES IN THERMOFORMED TRAYS PER MOLEX PACKAGING SPECIFICATION PK-44248-004.  
5) APPLICATION SPECIFICATION: AS-43860-001  
6) ALL UNTOLERANCED DIMENSIONS ARE SHOWN FOR REFERENCE ONLY.  
7) CONFORMS TO FCC REGULATION PART 685 FOR MODULAR JACKS.  
8) MODJACKS AVAILABLE WITH EITHER SNAP-FIT OR PRESS-FIT PEGS.  
THIS DRAWING SHOWS SNAP-FIT PEGS.  
9) PCB LAYOUT AND PANEL CUT-OUT SHOWN ON SHEETS (5) AND (6).  
10) THIS PART CONFORMS TO CLASS B REQUIREMENTS OF COSMETIC SPECIFICATION PS-45499-002.

UNSHIELDED  
WITH LIGHT PIPES

QUALITY SYMBOLS	GENERAL TOLERANCES (UNLESS SPECIFIED)		DIMENSION STYLE		SCALE	DESIGN UNITS	THIRD ANGLE PROJECTION
	mm	INCH	IN/MM	INCH			
▽=0	4 PLACES ±	±.010	MAYO	98/10/06	4:1	INCH	 GANGED INVERTED MODJACK ASSEMBLY   DOCUMENT NO. SD-44248-001 SHEET NO. 1 OF 6
▽=0	3 PLACES ±	±.025	JROBERTS	98/10/06			
▽=0	2 PLACES ±	±.050	JROBERTS	98/10/06			
▽=0	1 PLACE ±	±.100	JROBERTS	98/10/06			
	0 PLACE ±	±.200	JROBERTS	98/10/06			
	ANGULAR ±1/2°		SEE CHART				
	DRAFT WHERE APPLICABLE MUST REMAIN WITHIN DIMENSIONS		MATERIAL: SEE CHART				
	SIZE D THIS DRAWING CONTAINS INFORMATION THAT IS PROPRIETARY TO MOLEX INCORPORATED AND SHOULD NOT BE USED WITHOUT WRITTEN PERMISSION						

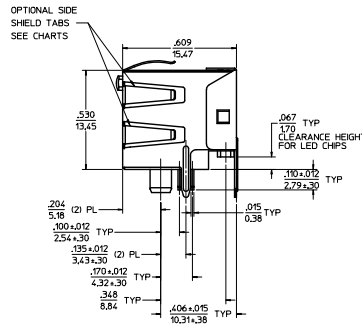
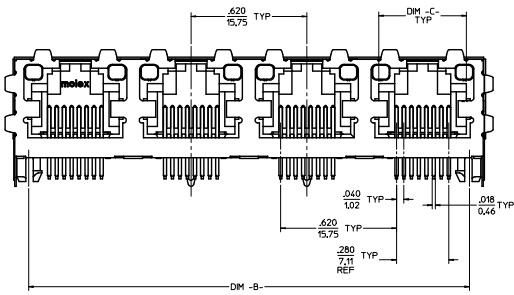
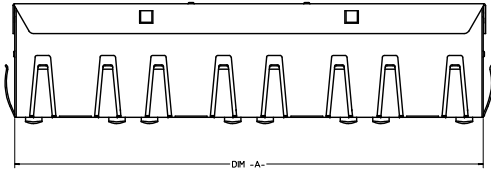


(8) CIRCUIT HOUSING(S)

ASSEMBLY MATERIAL NUMBER	NUMBER OF CIRCUITS	NUMBER OF PORTS	PEG STYLE	SIDE SHIELD TAB OPTION	DIM -A-	DIM -B-	DIM -C-
44248-0029	8	2	SNAP-FIT	A	1,274/32.36	1,120/28.45	.469/11.92
44248-0030	8	4	SNAP-FIT	A	2,514/63.86	2,360/59.94	.469/11.92
44248-0033	8	2	PRESS-FIT	A	1,274/32.36	1,120/28.45	.469/11.92
44248-0034	8	4	PRESS-FIT	A	2,514/63.86	2,360/59.94	.469/11.92

(6) CIRCUIT HOUSING(S)

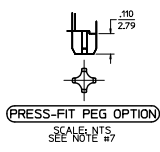
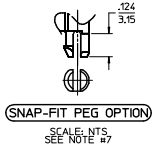
ASSEMBLY MATERIAL NUMBER	NUMBER OF CIRCUITS	NUMBER OF PORTS	PEG STYLE	SIDE SHIELD TAB OPTION	DIM -A-	DIM -B-	DIM -C-
44248-0037	6	2	SNAP-FIT	A	1,274/32.36	1,120/28.45	.389/9.88
44248-0038	4	2	SNAP-FIT	A	1,274/32.36	1,120/28.45	.389/9.88
44248-0039	6	4	SNAP-FIT	A	2,514/63.86	2,360/59.94	.389/9.88
44248-0040	4	4	SNAP-FIT	A	2,514/63.86	2,360/59.94	.389/9.88
44248-0045	6	2	PRESS-FIT	A	1,274/32.36	1,120/28.45	.389/9.88
44248-0046	4	2	PRESS-FIT	A	1,274/32.36	1,120/28.45	.389/9.88
44248-0047	6	4	PRESS-FIT	A	2,514/63.86	2,360/59.94	.389/9.88
44248-0048	4	4	PRESS-FIT	A	2,514/63.86	2,360/59.94	.389/9.88



- NOTES:
- 1) MATERIAL:  
HOUSING: POLYESTER(PBT), GLASS FILLED, UL94V-0, COLOR: BLACK  
LIGHT PIPES: POLYCARBONATE, UL-94V2, COLOR: CLEAR  
TERMINALS: PHOSPHOR BRONZE  
SHIELD: BRASS
  - 2) FINISH:  
TERMINALS:  
SELECT GOLD IN CONTACT AREA: 50 MICRONS (1.27 MICROMETERS) MIN.  
SELECT TIN IN PC TAIL AREA: 100 MICRONS (2.54 MICROMETERS) MIN.  
WITH OVERALL NICKEL UNDERPLATE: 50 MICRONS (1.27 MICROMETERS) MIN.  
SHIELD:  
100 MICRONS (2.54 MICROMETERS) NICKEL OVER 50 MICRONS (1.27 MICROMETERS) COPPER UNDERPLATE PCB GROUND TABS DIPPED IN TIN
  - 3) PRODUCT SPECIFICATION AND PROCESSING PARAMETERS: PS-43860-003.
  - 4) PACKAGING SPECIFICATION:  
CONNECTOR ASSEMBLIES IN THERMOFORMED TRAYS PER MOLEX PACKAGING SPECIFICATION PK-44248-004.
  - 5) APPLICATION SPECIFICATION: AS-43860-001
  - 6) ALL UNTOLERANCED DIMENSIONS ARE SHOWN FOR REFERENCE ONLY.
  - 7) CONFORMS TO FCC REGULATION PART 68.5 FOR MODULAR JACKS.
  - 8) MODJACKS AVAILABLE WITH EITHER SNAP-FIT OR PRESS-FIT PEGS.  
THIS DRAWING SHOWS SNAP-FIT PEGS.
  - 9) PCB LAYOUT AND PANEL CUT-OUT SHOWN ON SHEETS (5) AND (6).
  - 10) THIS PART CONFORMS TO CLASS B REQUIREMENTS OF COSMETIC SPECIFICATION PS-45499-002.

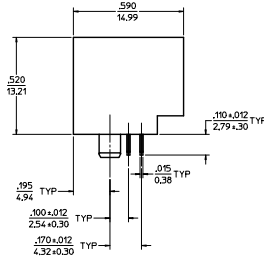
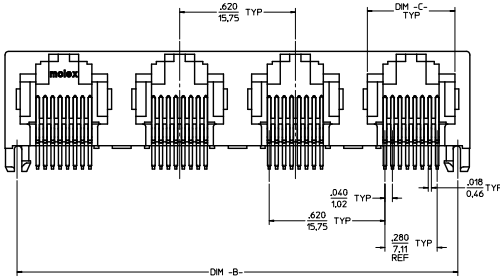
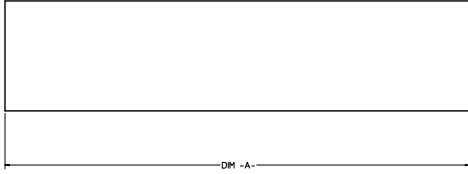
SHIELDED WITH LIGHT PIPES

QUALITY SYMBOLS	GENERAL TOLERANCES (UNLESS SPECIFIED)		DIMENSION STYLE		SCALE	DESIGN UNITS	THIRD ANGLE PROJECTION
	mm	INCH	IN/MM	IN/IN			
∇=0	4 PLACES ±	--- ±	MMAYO	98/10/06	4:1	INCH	GANGED INVERTED MODJACK ASSEMBLY
∇=0	2 PLACES ±	--- ±	ROBERTS	98/10/06			
∇=0	1 PLACE ±	--- ±	ROBERTS	98/10/06			
ANGULAR ±1/2°			DRAWN BY DATE		MATERIAL NO.		SHEET NO. 2 OF 6
DRAFT WHERE APPLICABLE MUST REMAIN WITHIN DIMENSIONS			SEE CHART		DOCUMENT NO. SD-44248-001		
THIS DRAWING CONTAINS INFORMATION THAT IS PROPRIETARY TO MOLEX INCORPORATED AND SHOULD NOT BE USED WITHOUT WRITTEN PERMISSION							



8 CIRCUIT HOUSING(S)						
ASSEMBLY MATERIAL NUMBER	NUMBER OF CIRCUITS	NUMBER OF PORTS	PEG STYLE	DIM -A-	DIM -B-	DIM -C-
44248-0057	8	2	SNAP-FIT	1,250/31.75	1,120/28.45	.469/11.92
44248-0058	8	4	SNAP-FIT	2,490/63.25	2,360/59.94	.469/11.92
44248-0061	8	2	PRESS-FIT	1,250/31.75	1,120/28.45	.469/11.92
44248-0062	8	4	PRESS-FIT	2,490/63.25	2,360/59.94	.469/11.92

6 CIRCUIT HOUSING(S)						
ASSEMBLY MATERIAL NUMBER	NUMBER OF CIRCUITS	NUMBER OF PORTS	PEG STYLE	DIM -A-	DIM -B-	DIM -C-
44248-0065	6	2	SNAP-FIT	1,250/31.75	1,120/28.45	.389/9.88
44248-0066	4	2	SNAP-FIT	1,250/31.75	1,120/28.45	.389/9.88
44248-0067	6	4	SNAP-FIT	2,490/63.25	2,360/59.94	.389/9.88
44248-0068	4	4	SNAP-FIT	2,490/63.25	2,360/59.94	.389/9.88
44248-0073	6	2	PRESS-FIT	1,250/31.75	1,120/28.45	.389/9.88
44248-0074	4	2	PRESS-FIT	1,250/31.75	1,120/28.45	.389/9.88
44248-0075	6	4	PRESS-FIT	2,490/63.25	2,360/59.94	.389/9.88
44248-0076	4	4	PRESS-FIT	2,490/63.25	2,360/59.94	.389/9.88

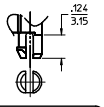


- NOTES:
- MATERIAL: HOUSING: POLYESTER(PBT), GLASS FILLED, UL94V-0, COLOR: BLACK  
TERMINALS: PHOSPHOR BRONZE
  - FINISH: TERMINALS: SELECT GOLD IN CONTACT AREA; 50 MICRONS (1.27 MICROMETERS) MIN. WITH OVERALL NICKEL UNDERPLATE; 50 MICRONS (1.27 MICROMETERS) MIN.
  - PRODUCT SPECIFICATION AND PROCESSING PARAMETERS: PS-4260-003
  - PACKAGING SPECIFICATIONS: CONNECTOR ASSEMBLIES IN THERMOFORMED TRAYS PER MOLEX PACKAGING SPECIFICATION PK-42248-004.
  - ALL UNTOLERANCED DIMENSIONS ARE SHOWN FOR REFERENCE ONLY.
  - CONFORMS TO FCC REGULATION PART 68.5 FOR MODULAR JACKS.
  - MODJACKS AVAILABLE WITH EITHER SNAP-FIT OR PRESS-FIT PEGS. THIS DRAWING SHOWS SNAP-FIT PEGS.
  - PCB LAYOUT AND PANEL CUT-OUT SHOWN ON SHEETS (5) AND (6).
  - THIS PART CONFORMS TO CLASS B REQUIREMENTS OF COSMETIC SPECIFICATION PS-45499-002.

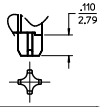
UNSHIELDED

SEE SHEET 1 REC. NO. 1027013-4879 DRAWING/REV. 20/05/09 CHK'D/BELL 20/05/09 APPR'D/SMITH 20/05/09 DESIGNED BY DRAWN BY	QUALITY SYMBOLS	GENERAL TOLERANCES (UNLESS SPECIFIED)	DIMENSION STYLE IN/MM DRAWN BY DATE TITLE	SCALE 4:1	DESIGN UNITS INCH	THIRD ANGLE PROJECTION
	4 PLACES ±--- ±--- 3 PLACES ±--- ±--- 2 PLACES ±--- ±--- 1 PLACE ±--- ±--- 0 PLACE ±--- ±---	.mm .INCH ±.010 ±.025 ±--- ±---	MAYO 98/10/06 GANGED INVERTED MODJACK ASSEMBLY JROBERTS 98/10/06 JROBERTS 98/10/06			
		MATERIAL: NG ANGULAR ±1/2° DRAFT WHERE APPLICABLE MUST REMAIN WITHIN DIMENSIONS	SEE CHART THIS DRAWING CONTAINS INFORMATION THAT IS PROPRIETARY TO MOLEX INCORPORATED AND SHOULD NOT BE USED WITHOUT WRITTEN PERMISSION	DOCUMENT NO.		
				SD-44248-001		SHEET NO. 3 OF 6

20 19 18 17 16 15 14 13 12 11 10 9 8 7 6 5 4 3 2 1



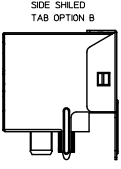
**(SNAP-FIT PEG OPTION)**  
SCALE: NTS.  
SEE NOTE #7



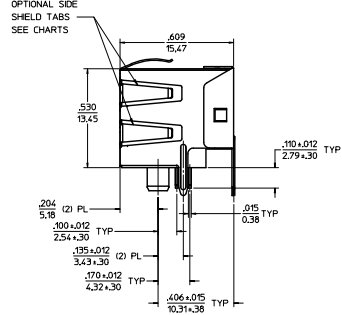
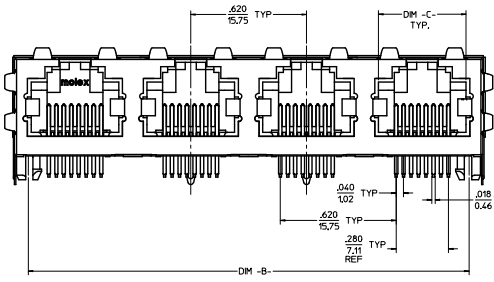
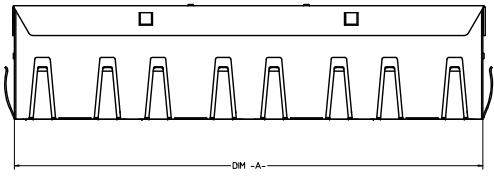
**(PRESS-FIT PEG OPTION)**  
SCALE: NTS.  
SEE NOTE #7



**SIDE SHIELDED TAB OPTION A**



**SIDE SHIELDED TAB OPTION B**



**OPTIONAL SIDE SHIELDED TABS SEE CHARTS**

**(8) CIRCUIT HOUSING(S)**

X - NOT TOOLED	ASSEMBLY MATERIAL NUMBER	NUMBER OF CIRCUITS	NUMBER OF PORTS	PEG STYLE	SIDE SHIELD TAB OPTION	DIM -A-	DIM -B-	DIM -C-
	44248-0085	8	2	SNAP-FIT	A	1.274/32.36	1.120/28.45	.469/11.92
	44248-0086	8	4	SNAP-FIT	A	2.514/63.86	2.360/59.94	.469/11.92
	44248-0089	8	2	PRESS-FIT	A	1.274/32.36	1.120/28.45	.469/11.92
	44248-0090	8	4	PRESS-FIT	A	2.514/63.86	2.360/59.94	.469/11.92
X	44248-0119	8	4	PRESS FIT	B	2.514/63.86	2.360/59.94	.469/11.92

**(6) CIRCUIT HOUSING(S)**

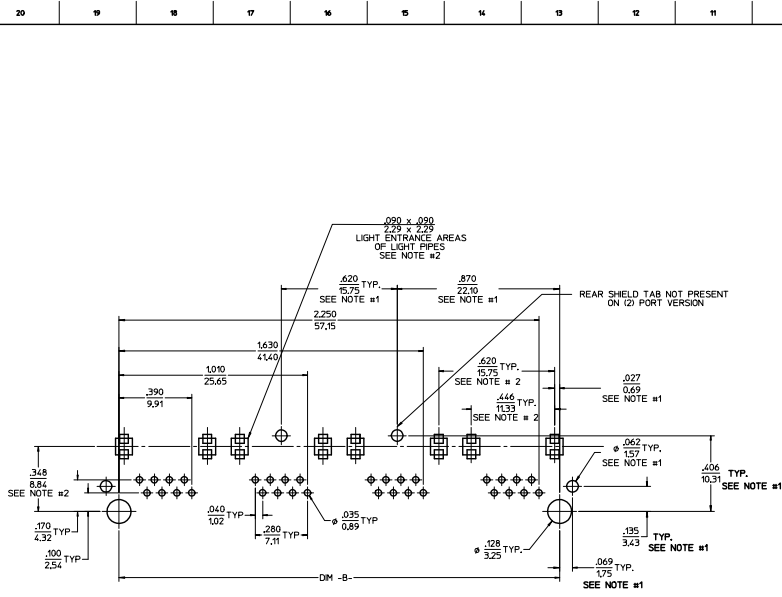
ASSEMBLY MATERIAL NUMBER	NUMBER OF CIRCUITS	NUMBER OF PORTS	PEG STYLE	SIDE SHIELD TAB OPTION	DIM -A-	DIM -B-	DIM -C-
44248-0093	6	2	SNAP-FIT	A	1.274/32.36	1.120/28.45	.389/9.88
44248-0094	4	2	SNAP-FIT	A	1.274/32.36	1.120/28.45	.389/9.88
44248-0095	6	4	SNAP-FIT	A	2.514/63.86	2.360/59.94	.389/9.88
44248-0096	4	4	SNAP-FIT	A	2.514/63.86	2.360/59.94	.389/9.88
44248-0101	6	2	PRESS-FIT	A	1.274/32.36	1.120/28.45	.389/9.88
44248-0102	4	2	PRESS-FIT	A	1.274/32.36	1.120/28.45	.389/9.88
44248-0103	6	4	PRESS-FIT	A	2.514/63.86	2.360/59.94	.389/9.88
44248-0104	4	4	PRESS-FIT	A	2.514/63.86	2.360/59.94	.389/9.88

- NOTES:**
- MATERIAL:**  
HOUSING: POLYESTER(PBT), GLASS FILLED, UL94V-0, COLOR: BLACK  
TERMINALS: PHOSPHOR BRONZE  
SHIELD: BRASS
  - TERMINALS:**  
SELECT GOLD IN CONTACT AREA: 50 MICRONS (.127 MICROMETERS) MIN.  
SELECT TIN IN PC TAIL AREA: 100 MICRONS (2.54 MICROMETERS) MIN.  
WITH OVERALL NICKEL UNDERPLATE: 50 MICRONS (1.27 MICROMETERS) MIN.  
SHIELD:  
100 MICRONS (2.54 MICROMETERS) NICKEL OVER 50 MICRONS (1.27 MICROMETERS) COPPER UNDERPLATE FOR GROUND TABS DIPPED IN TIN
  - PRODUCT SPECIFICATION AND PROCESSING PARAMETERS:** PS-43860-003.
  - PACKAGING SPECIFICATION:** CONNECTOR ASSEMBLIES IN THERMOFORMED TRAYS PER MOLEX PACKAGING SPECIFICATION PK-44248-004.
  - ALL UNTOLERANCED DIMENSIONS ARE SHOWN FOR REFERENCE ONLY.**
  - CONFORMS TO FCC REGULATION PART 48.5 FOR MODULAR JACKS.**
  - MODJACKS AVAILABLE WITH EITHER SNAP-FIT OR PRESS-FIT PEGS.**
  - THIS DRAWING SHOWS SNAP-FIT PEGS.**
  - PCB LAYOUT AND PANEL CUT-OUT SHOWN ON SHEETS (5) AND (6).**
  - THIS PART CONFORMS TO CLASS B REQUIREMENTS OF COSMETIC SPECIFICATION PS-45499-002.**

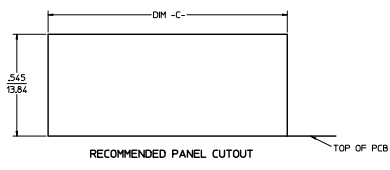
**(SHIELDED)**

SEE SHEET 1 REC. NO. MFP203-4879 DRAWN BY: CHEN/MB/WH CHECKED BY: JACQUES/MB/WH APPROVED BY: JACQUES/MB/WH DATE: 2010/05/09 2010/06/09 2010/06/09	<b>QUALITY SYMBOLS</b> ∇=0 ∇=0 ∇=0	<b>GENERAL TOLERANCES (UNLESS SPECIFIED)</b> mm INCH 4 PLACES ± --- ± --- 3 PLACES ± --- ± .010 2 PLACES ± 0.25 ± --- 1 PLACE ± --- ± --- 0 PLACE ± --- ± ---	<b>DIMENSION STYLE</b> IN/MM DRAWN BY: MMAYO DATE: 98/10/06 CHECKED BY: JROBERTS DATE: 98/10/06 APPROVED BY: JROBERTS DATE: 98/10/06	SCALE: 4:1 DESIGN UNITS: INCH THIRD ANGLE PROJECTION
	MATERIAL NO. SEE CHART DRAFT WHERE APPLICABLE MUST REMAIN WITHIN DIMENSIONS		DOCUMENT NO. SD-44248-001 SHEET NO. 4 OF 6	
	THIS DRAWING CONTAINS INFORMATION THAT IS PROPRIETARY TO MOLEX INCORPORATED AND SHOULD NOT BE USED WITHOUT WRITTEN PERMISSION			

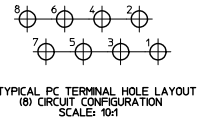
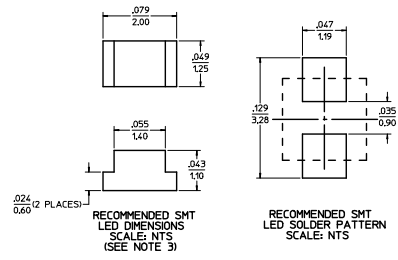
19 18 17 16 15 14 13 12 11 10 9 8 7 6 5 4 3 2 1



8 CIRCUIT PCB LAYOUT: COMPONENT SIDE  
RECOMMENDED PCB THICKNESS: .062/1.57  
TOLERANCE +.003/.076 UNLESS OTHERWISE SPECIFIED



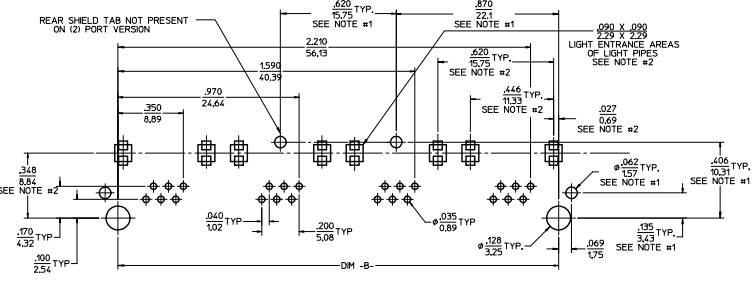
NUMBER OF PORTS	DIM -B-	DIM -C-
2	1.120/28.45	1.280/32.51
4	2.360/59.94	2.520/64.01



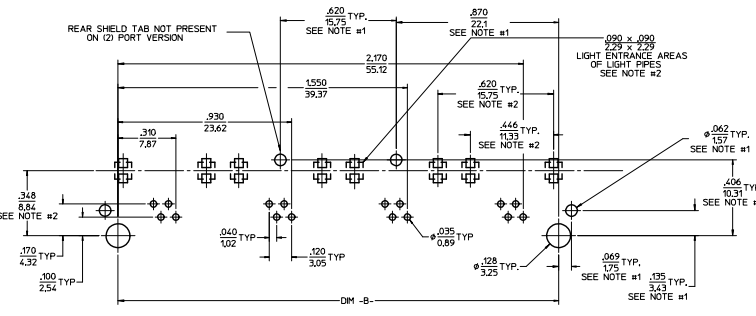
- NOTES:
- 1) DIMENSIONS MARKED "SEE NOTE #1" REFER TO ASSEMBLIES WITH THE SHIELDING OPTION INCLUDED
  - 2) DIMENSIONS MARKED "SEE NOTE #2" REFER TO ASSEMBLIES WITH THE LIGHT PIPE OPTION INCLUDED
  - 3) FOR CROSS REFERENCE OF RECOMMENDED LEADS SEE MOLEX WEB SITE.

QUALITY SYMBOLS	GENERAL TOLERANCES (UNLESS SPECIFIED)		DIMENSION STYLE		SCALE	DESIGN UNITS	THIRD ANGLE PROJECTION
	mm	INCH	IN/MM	DATE			
▽=0	4 PLACES ±---	±---	MAYO	98/10/06	4:1	INCH	GANGED INVERTED MODJACK ASSEMBLY
▽=0	3 PLACES ±---	±.010	CHECKED BY	DATE			
▽=0	2 PLACES ±0.25	±---	JROBERTS	98/10/06			
▽=0	1 PLACE ±---	±---	APPROVED BY	DATE			
	0 PLACE ±---	±---	JROBERTS	98/10/06			
	ANGULAR ±1/2°		MATERIAL NO.		DOCUMENT NO.		
	DRAFT WHERE APPLICABLE MUST REMAIN WITHIN DIMENSIONS		N/A		SD-44248-001		SHEET NO. 5 OF 6
THIS DRAWING CONTAINS INFORMATION THAT IS PROPRIETARY TO MOLEX INCORPORATED AND SHOULD NOT BE USED WITHOUT WRITTEN PERMISSION							

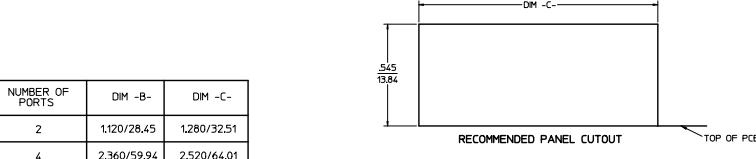
20 19 18 17 16 15 14 13 12 11 10 9 8 7 6 5 4 3 2 1



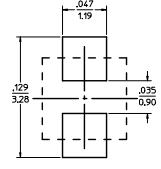
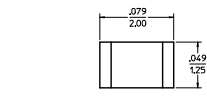
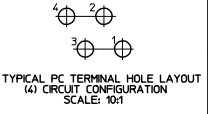
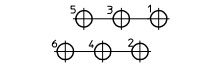
6 CIRCUIT PCB LAYOUT: COMPONENT SIDE  
RECOMMENDED PCB THICKNESS: .062/157  
TOLERANCE ±.003/.076 UNLESS OTHERWISE SPECIFIED



4 CIRCUIT PCB LAYOUT: COMPONENT SIDE  
RECOMMENDED PCB THICKNESS: .062/157  
TOLERANCE ±.003/.076 UNLESS OTHERWISE SPECIFIED



NUMBER OF PORTS	DIM -B-	DIM -C-
2	1,120/28,45	1,280/32,51
4	2,360/59,94	2,520/64,01



- NOTES:
- 1) DIMENSIONS MARKED "SEE NOTE #1" REFER TO ASSEMBLIES WITH SHIELDING OPTION INCLUDED
  - 2) DIMENSIONS MARKED "SEE NOTE #2" REFER TO ASSEMBLIES WITH THE LIGHT PIPE OPTION INCLUDED
  - 3) FOR CROSS REFERENCE OF RECOMMENDED LEDS SEE MOLEX WEB SITE.

SEE SHEET 1 REC. NO. 0442480057-4879 2013/05/09 CHIKO BELL APPROVED TEL: 093-8360-0000 FAX: 093-8360-0001	QUALITY SYMBOLS	GENERAL TOLERANCES (UNLESS SPECIFIED)	DIMENSION STYLE	SCALE	DESIGN UNITS	THIRD ANGLE PROJECTION	
	∇=0 ∇=0 ∇=0	mm INCH 4 PLACES ±--- ±--- 3 PLACES ±--- ±--- 2 PLACES ±0.25 ±--- 1 PLACE ±--- ±--- 0 PLACE ±--- ±---	IN/MM DRAWN BY DATE MAYU 98/10/06 CHECKED BY DATE JROBERTS 98/10/06 APPROVED BY DATE JROBERTS 98/10/06	N/A MATERIAL NO.	4:1	INCH	GANGED INVERTED MODJACK ASSEMBLY 
	ANGULAR ±1/2° DRAFT WHERE APPLICABLE MUST REMAIN WITHIN DIMENSIONS	THIS DRAWING CONTAINS INFORMATION THAT IS PROPRIETARY TO MOLEX INCORPORATED AND SHOULD NOT BE USED WITHOUT WRITTEN PERMISSION	DOCUMENT NO. SD-44248-001 SHEET NO. 6 OF 6				

19 18 17 16 15 14 13 12 11 10 9 8 7 6 5 4 3 2 1