

Excellent Integrated System Limited

Stocking Distributor

Click to view price, real time Inventory, Delivery & Lifecycle Information:

[Molex Connector Corporation](#)

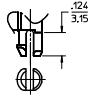
[0442480095](#)

For any questions, you can email us directly:

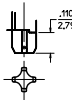
sales@integrated-circuit.com

8 CIRCUIT HOUSING(S)						
ASSEMBLY MATERIAL NUMBER	NUMBER OF CIRCUITS	NUMBER OF PORTS	PEG STYLE	DIM -A-	DIM -B-	DIM -C-
44248-0001	8	2	SNAP-FIT	1.250/31.75	1.120/28.45	.469/11.92
44248-0002	8	4	SNAP-FIT	2.490/63.25	2.360/59.94	.469/11.92
44248-0005	8	2	PRESS-FIT	1.250/31.75	1.120/28.45	.469/11.92
44248-0006	8	4	PRESS-FIT	2.490/63.25	2.360/59.94	.469/11.92

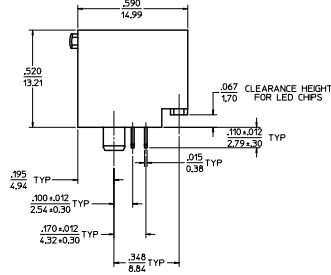
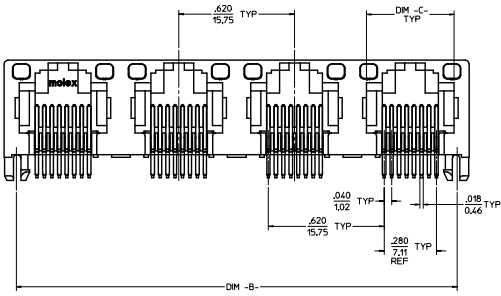
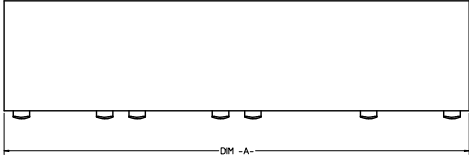
6 CIRCUIT HOUSING(S)						
ASSEMBLY MATERIAL NUMBER	NUMBER OF CIRCUITS	NUMBER OF PORTS	PEG STYLE	DIM -A-	DIM -B-	DIM -C-
44248-0009	6	2	SNAP-FIT	1.250/31.75	1.120/28.45	.389/9.88
44248-0010	4	2	SNAP-FIT	1.250/31.75	1.120/28.45	.389/9.88
44248-0011	6	4	SNAP-FIT	2.490/63.25	2.360/59.94	.389/9.88
44248-0012	4	4	SNAP-FIT	2.490/63.25	2.360/59.94	.389/9.88
44248-0017	6	2	PRESS-FIT	1.250/31.75	1.120/28.45	.389/9.88
44248-0018	4	2	PRESS-FIT	1.250/31.75	1.120/28.45	.389/9.88
44248-0019	6	4	PRESS-FIT	2.490/63.25	2.360/59.94	.389/9.88
44248-0020	4	4	PRESS-FIT	2.490/63.25	2.360/59.94	.389/9.88



SNAP-FIT PEG OPTION
SCALE: NTS
SEE NOTE #8



PRESS-FIT PEG OPTION
SCALE: NTS
SEE NOTE #8

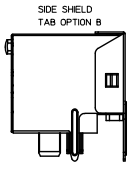
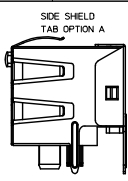
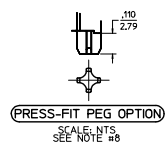
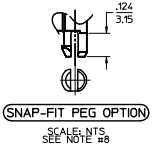


- NOTES:
1) MATERIAL:
HOUSING: POLYESTER(PBT), GLASS FILLED, UL94V-0, COLOR: BLACK
LIGHT PIPES: POLYCARBONATE, UL-94V2, COLOR: CLEAR
TERMINALS: PHOSPHOR BRONZE
2) FINISH:
TERMINALS:
SELECT TRN IN CONTACT AREA: 50 MICRONS (127 MICROMETERS) MIN.
SELECT TRN IN PC TAIL AREA: 100 MICRONS (254 MICROMETERS) MIN.
WITH OVERALL NICKEL UNDERLAY: 50 MICRONS (127 MICROMETERS) MIN.
3) PRODUCT SPECIFICATION AND PROCESSING PARAMETERS: PS-43860-003.
4) PACKAGING SPECIFICATION:
CONNECTOR ASSEMBLIES IN THERMOFORMED TRAYS PER MOLEX PACKAGING SPECIFICATION PK-44248-004.
5) APPLICATION SPECIFICATION: AS-43860-001
6) ALL UNTOLERANCED DIMENSIONS ARE SHOWN FOR REFERENCE ONLY.
7) CONFORMS TO FCC REGULATION PART 68.5 FOR MODULAR JACKS.
8) MODJACKS AVAILABLE WITH EITHER SNAP-FIT OR PRESS-FIT PEGS.
THIS DRAWING SHOWS SNAP-FIT PEGS.
9) PCB LAYOUT AND PANEL CUT-OUT SHOWN ON SHEETS (5) AND (6).
10) THIS PART CONFORMS TO CLASS B REQUIREMENTS OF COSMETIC SPECIFICATION PS-45499-002.

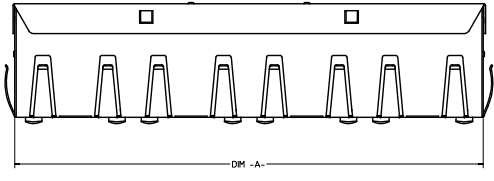
UNSHIELDED
WITH LIGHT PIPES

ADD TAIL TOI EC NO. UEP7003-4879 DRAWN/REVISED CHKD/BELL APPR/SMITH DATE 2010/05/09 2010/05/09 2010/06/02	QUALITY SYMBOLS	GENERAL TOLERANCES (UNLESS SPECIFIED)	DIMENSION STYLE	SCALE	DESIGN UNITS	THIRD ANGLE PROJECTION	
	$\nabla=0$ $\nabla=0$ $\nabla=0$	mm INCH 4 PLACES ± --- ± --- 3 PLACES ± --- ± .010 2 PLACES ± 0.25 ± --- 1 PLACE ± --- ± --- 0 PLACE ± ±	IN/MM DRAWN BY M MAYO 98/10/06 CHECKED BY J ROBERTS 98/10/06 APPROVED BY J ROBERTS 98/10/06	DATE 98/10/06 DATE 98/10/06 DATE 98/10/06	4:1	INCH	
	MATERIAL NO. SEE CHART DRAFT WHERE APPLICABLE MUST REMAIN WITHIN DIMENSIONS	ANGLE: 1/2° SEE CHART THIS DRAWING CONTAINS INFORMATION THAT IS PROPRIETARY TO MOLEX INCORPORATED AND SHOULD NOT BE USED WITHOUT WRITTEN PERMISSION	DOCUMENT NO. SD-44248-001 SHEET NO. 1 OF 6				

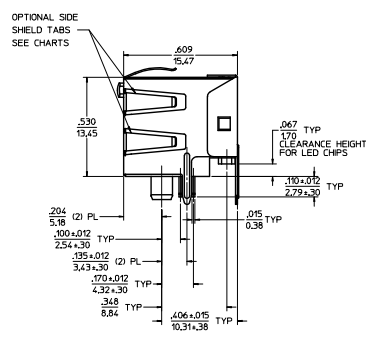
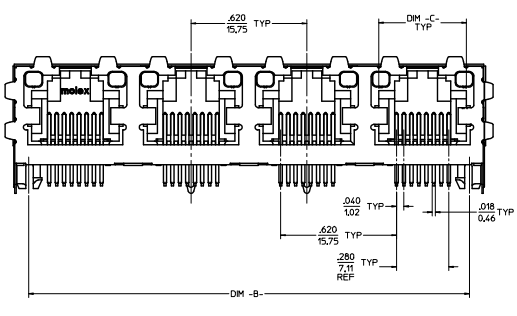
20 19 18 17 16 15 14 13 12 11 10 9 8 7 6 5 4 3 2 1



(8) CIRCUIT HOUSING(S)							
ASSEMBLY MATERIAL NUMBER	NUMBER OF CIRCUITS	NUMBER OF PORTS	PEG STYLE	SIDE SHIELD TAB OPTION	DIM -A-	DIM -B-	DIM -C-
44248-0029	8	2	SNAP-FIT	A	1.274/32.36	1.120/28.45	.469/11.92
44248-0030	8	4	SNAP-FIT	A	2.514/63.86	2.360/59.94	.469/11.92
44248-0033	8	2	PRESS-FIT	A	1.274/32.36	1.120/28.45	.469/11.92
44248-0034	8	4	PRESS-FIT	A	2.514/63.86	2.360/59.94	.469/11.92



(6) CIRCUIT HOUSING(S)							
ASSEMBLY MATERIAL NUMBER	NUMBER OF CIRCUITS	NUMBER OF PORTS	PEG STYLE	SIDE SHIELD TAB OPTION	DIM -A-	DIM -B-	DIM -C-
44248-0037	6	2	SNAP-FIT	A	1.274/32.36	1.120/28.45	.389/9.88
44248-0038	4	2	SNAP-FIT	A	1.274/32.36	1.120/28.45	.389/9.88
44248-0039	6	4	SNAP-FIT	A	2.514/63.86	2.360/59.94	.389/9.88
44248-0040	4	4	SNAP-FIT	A	2.514/63.86	2.360/59.94	.389/9.88
44248-0045	6	2	PRESS-FIT	A	1.274/32.36	1.120/28.45	.389/9.88
44248-0046	4	2	PRESS-FIT	A	1.274/32.36	1.120/28.45	.389/9.88
44248-0047	6	4	PRESS-FIT	A	2.514/63.86	2.360/59.94	.389/9.88
44248-0048	4	4	PRESS-FIT	A	2.514/63.86	2.360/59.94	.389/9.88

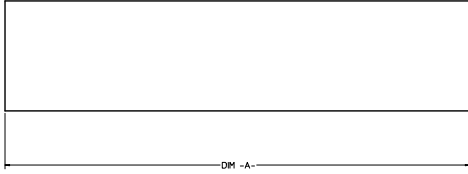
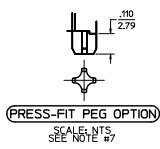
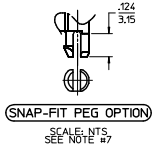


- NOTES:
- 1) MATERIAL:
HOUSING: POLYESTER(PBT), GLASS FILLED, UL94V-0, COLOR: BLACK
LIGHT PIPES: POLYCARBONATE, UL-94V2, COLOR: CLEAR
TERMINALS: PHOSPHOR BRONZE
SHIELD: BRASS
 - 2) FINISH:
TERMINALS:
SELECT GOLD IN CONTACT AREA: 50 MICRONS (1.27 MICROMETERS) MIN.
SELECT TIN IN PC TAIL AREA: 100 MICRONS (2.54 MICROMETERS) MIN.
WITH OVERALL NICKEL UNDERPLATE: 50 MICRONS (1.27 MICROMETERS) MIN.
SHIELD:
100 MICRONS (2.54 MICROMETERS) NICKEL OVER 50 MICRONS (1.27 MICROMETERS) COPPER UNDERPLATE PCB GROUND TABS DIPPED IN TIN
 - 3) PRODUCT SPECIFICATION AND PROCESSING PARAMETERS: PS-4360-003.
 - 4) PACKAGING SPECIFICATION:
CONNECTOR ASSEMBLIES IN THERMOFORMED TRAYS PER MOLEX PACKAGING SPECIFICATION PK-44248-004.
 - 5) APPLICATION SPECIFICATION: AS-4860-001
 - 6) ALL UNTOLERANCED DIMENSIONS ARE SHOWN FOR REFERENCE ONLY.
 - 7) CONFORMS TO FCC REGULATION PART 68.5 FOR MODULAR JACKS.
 - 8) MODJACKS AVAILABLE WITH EITHER SNAP-FIT OR PRESS-FIT PEGS.
THIS DRAWING SHOWS SNAP-FIT PEGS.
 - 9) PCB LAYOUT AND PANEL CUT-OUT SHOWN ON SHEETS (5) AND (6).
 - 10) THIS PART CONFORMS TO CLASS B REQUIREMENTS OF COSMETIC SPECIFICATION PS-45499-002.

SHIELDED WITH LIGHT PIPES

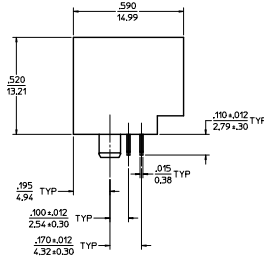
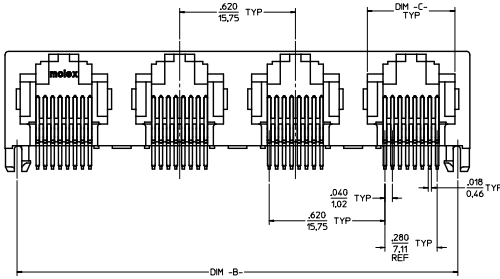
SEE SHEET 1 SEC. NO. 147203-4879 DRAWING/REV. 2010/05/09 CHKD/BELL 2010/05/09 APPR/SMT/TL 2010/05/09 DESIGNED BY	QUALITY SYMBOLS	GENERAL TOLERANCES (UNLESS SPECIFIED)	DIMENSION STYLE IN/MM	SCALE 4:1	DESIGN UNITS INCH	THIRD ANGLE PROJECTION	
	4 PLACES ± .010 3 PLACES ± .010 2 PLACES ± .025 1 PLACE ± .010 0 PLACE ± .010	mm INCH ± .010 ± .025 ± .010 ± .010	DRAWN BY DATE MMAYO 98/10/06	TITLE GANGED INVERTED MODJACK ASSEMBLY			
	APPROVED BY DATE JROBERTS 98/10/06	MATERIAL NO. SEE CHART	DOCUMENT NO. SD-44248-001 SHEET NO. 2 OF 6				
	DRAFT WHERE APPLICABLE MUST REMAIN WITHIN DIMENSIONS SIZE D THIS DRAWING CONTAINS INFORMATION THAT IS PROPRIETARY TO MOLEX INCORPORATED AND SHOULD NOT BE USED WITHOUT WRITTEN PERMISSION						

Rev. 0, 04/01/01



8 CIRCUIT HOUSING(S)						
ASSEMBLY MATERIAL NUMBER	NUMBER OF CIRCUITS	NUMBER OF PORTS	PEG STYLE	DIM - A-	DIM - B-	DIM - C-
44248-0057	8	2	SNAP-FIT	1,250/31.75	1,120/28.45	.469/11.92
44248-0058	8	4	SNAP-FIT	2,490/63.25	2,360/59.94	.469/11.92
44248-0061	8	2	PRESS-FIT	1,250/31.75	1,120/28.45	.469/11.92
44248-0062	8	4	PRESS-FIT	2,490/63.25	2,360/59.94	.469/11.92

6 CIRCUIT HOUSING(S)						
ASSEMBLY MATERIAL NUMBER	NUMBER OF CIRCUITS	NUMBER OF PORTS	PEG STYLE	DIM - A-	DIM - B-	DIM - C-
44248-0065	6	2	SNAP-FIT	1,250/31.75	1,120/28.45	.389/9.88
44248-0066	4	2	SNAP-FIT	1,250/31.75	1,120/28.45	.389/9.88
44248-0067	6	4	SNAP-FIT	2,490/63.25	2,360/59.94	.389/9.88
44248-0068	4	4	SNAP-FIT	2,490/63.25	2,360/59.94	.389/9.88
44248-0073	6	2	PRESS-FIT	1,250/31.75	1,120/28.45	.389/9.88
44248-0074	4	2	PRESS-FIT	1,250/31.75	1,120/28.45	.389/9.88
44248-0075	6	4	PRESS-FIT	2,490/63.25	2,360/59.94	.389/9.88
44248-0076	4	4	PRESS-FIT	2,490/63.25	2,360/59.94	.389/9.88

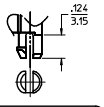


- NOTES:
- MATERIAL: HOUSING: POLYESTER(PBT), GLASS FILLED, UL94V-0, COLOR: BLACK
TERMINALS: PHOSPHOR BRONZE
 - FINISH: TERMINALS: SELECT GOLD IN CONTACT AREA; 50 MICRONS (1.27 MICROMETERS) MIN. WITH OVERALL NICKEL UNDERPLATE; 50 MICRONS (1.27 MICROMETERS) MIN.
 - PRODUCT SPECIFICATION AND PROCESSING PARAMETERS: PS-4260-003
 - PACKAGING SPECIFICATIONS: CONNECTOR ASSEMBLIES IN THERMOFORMED TRAYS PER MOLEX PACKAGING SPECIFICATION PK-42248-004.
 - ALL UNTOLERANCED DIMENSIONS ARE SHOWN FOR REFERENCE ONLY.
 - CONFORMS TO FCC REGULATION PART 68.5 FOR MODULAR JACKS.
 - MODJACKS AVAILABLE WITH EITHER SNAP-FIT OR PRESS-FIT PEGS. THIS DRAWING SHOWS SNAP-FIT PEGS.
 - PCB LAYOUT AND PANEL CUT-OUT SHOWN ON SHEETS (5) AND (6).
 - THIS PART CONFORMS TO CLASS B REQUIREMENTS OF COSMETIC SPECIFICATION PS-45499-002.

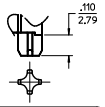
UNSHIELDED

SEE SHEET 1 REC. NO. 1027013-4879 DRAWING/REV. 2010/05/09 CHK'D/BELL 2010/05/09 APPR'D/SW/01 2010/06/02 (DATE)	QUALITY SYMBOLS	GENERAL TOLERANCES (UNLESS SPECIFIED)	DIMENSION STYLE IN/MM	SCALE 4:1	DESIGN UNITS INCH	THIRD ANGLE PROJECTION
	∇=0	4 PLACES ±.010	mm INCH	DRAWN BY MMAYO	DATE 98/10/06	TITLE GANGED INVERTED MODJACK ASSEMBLY
	∇=0	3 PLACES ±.010		CHECKED BY JROBERTS	DATE 98/10/06	
	∇=0	1 PLACE ±.010		APPROVED BY JROBERTS	DATE 98/10/06	
		DRAFT WHERE APPLICABLE MUST REMAIN WITHIN DIMENSIONS	MATERIAL NO. SEE CHART	DOCUMENT NO. SD-44248-001	SHEET NO. 3 OF 6	

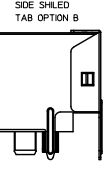
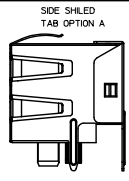
20 19 18 17 16 15 14 13 12 11 10 9 8 7 6 5 4 3 2 1



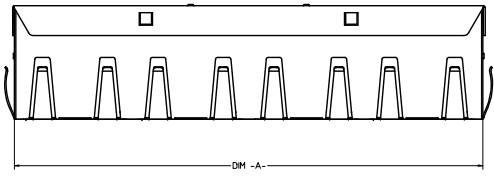
(SNAP-FIT PEG OPTION)
SCALE: NTS.
SEE NOTE #7



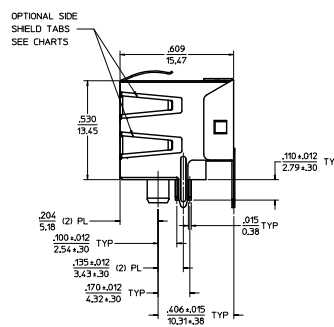
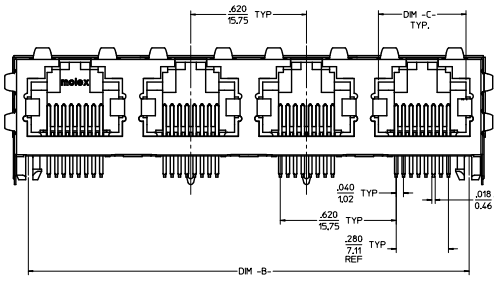
(PRESS-FIT PEG OPTION)
SCALE: NTS.
SEE NOTE #7



(8) CIRCUIT HOUSING(S)								
X - NOT TOOLED	ASSEMBLY MATERIAL NUMBER	NUMBER OF CIRCUITS	NUMBER OF PORTS	PEG STYLE	SIDE SHELDED TAB OPTION	DIM -A-	DIM -B-	DIM -C-
	44248-0085	8	2	SNAP-FIT	A	1.274/32.36	1.120/28.45	.469/11.92
	44248-0086	8	4	SNAP-FIT	A	2.514/63.86	2.360/59.94	.469/11.92
	44248-0089	8	2	PRESS-FIT	A	1.274/32.36	1.120/28.45	.469/11.92
	44248-0090	8	4	PRESS-FIT	A	2.514/63.86	2.360/59.94	.469/11.92
X	44248-0119	8	4	PRESS FIT	B	2.514/63.86	2.360/59.94	.469/11.92



(6) CIRCUIT HOUSING(S)								
ASSEMBLY MATERIAL NUMBER	NUMBER OF CIRCUITS	NUMBER OF PORTS	PEG STYLE	SIDE SHELDED TAB OPTION	DIM -A-	DIM -B-	DIM -C-	
44248-0093	6	2	SNAP-FIT	A	1.274/32.36	1.120/28.45	.389/9.88	
44248-0094	4	2	SNAP-FIT	A	1.274/32.36	1.120/28.45	.389/9.88	
44248-0095	6	4	SNAP-FIT	A	2.514/63.86	2.360/59.94	.389/9.88	
44248-0096	4	4	SNAP-FIT	A	2.514/63.86	2.360/59.94	.389/9.88	
44248-0101	6	2	PRESS-FIT	A	1.274/32.36	1.120/28.45	.389/9.88	
44248-0102	4	2	PRESS-FIT	A	1.274/32.36	1.120/28.45	.389/9.88	
44248-0103	6	4	PRESS-FIT	A	2.514/63.86	2.360/59.94	.389/9.88	
44248-0104	4	4	PRESS-FIT	A	2.514/63.86	2.360/59.94	.389/9.88	

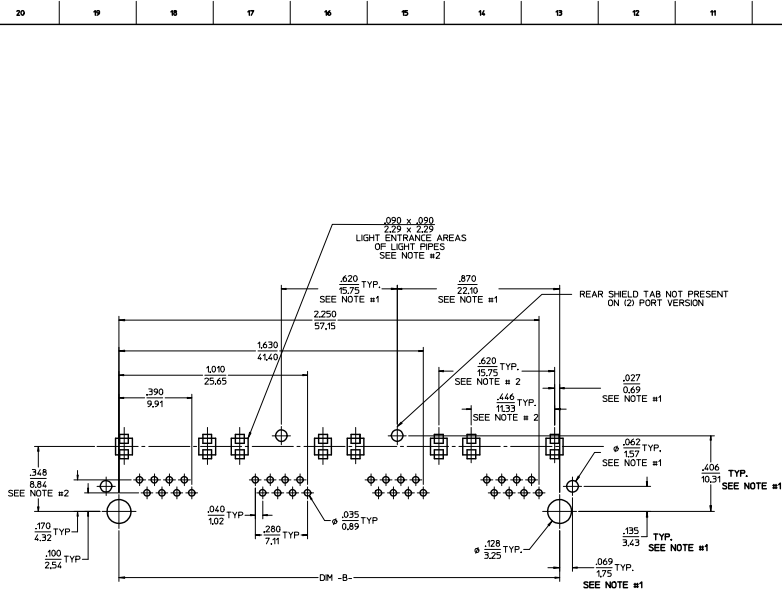


- NOTES:
- MATERIAL: HOUSING: POLYESTER(PBT), GLASS FILLED, UL94V-0, COLOR: BLACK
TERMINALS: PHOSPHOR BRONZE
SHELD: BRASS
 - FINISH: TERMINALS: SELECT GOLD IN CONTACT AREA: 50 MICRONS (1.27 MICROMETERS) MIN. SELECT TIN IN PC TAIL AREA: 100 MICRONS (2.54 MICROMETERS) MIN. WITH OVERALL NICKEL UNDERPLATE: 50 MICRONS (1.27 MICROMETERS) MIN. SHELD: 100 MICRONS (2.54 MICROMETERS) NICKEL OVER 50 MICRONS (1.27 MICROMETERS) COPPER UNDERPLATE FOR GROUND TABS DIPPED IN TIN
 - PRODUCT SPECIFICATION AND PROCESSING PARAMETERS: PS-43860-003.
 - PACKAGING SPECIFICATION: CONNECTOR ASSEMBLIES IN THERMOFORMED TRAYS PER MOLEX PACKAGING SPECIFICATION PK-44248-004.
 - ALL UNTOLERANCED DIMENSIONS ARE SHOWN FOR REFERENCE ONLY.
 - CONFORMS TO FCC REGULATION PART 48.5 FOR MODULAR JACKS.
 - MODJACKS AVAILABLE WITH EITHER SNAP-FIT OR PRESS-FIT PEGS.
 - THIS DRAWING SHOWS SNAP-FIT PEGS.
 - PCB LAYOUT AND PANEL CUT-OUT SHOWN ON SHEETS (5) AND (6).
 - THIS PART CONFORMS TO CLASS B REQUIREMENTS OF COSMETIC SPECIFICATION PS-45499-002.

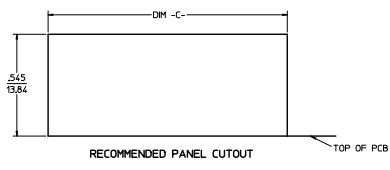
SHIELDED

SEE SHEET 1 REC. NO. 46703-4879 DRAWN BY: JROBERTS CHECKED BY: JROBERTS APPROVED BY: JROBERTS DATE: 9/8/10/06 SHEET NO. 4 OF 6	QUALITY SYMBOLS ∇=0 ∇=0 ∇=0	GENERAL TOLERANCES (UNLESS SPECIFIED) mm INCH 4 PLACES ± .10 3 PLACES ± .125 2 PLACES ± .25 1 PLACE ± .5 0 PLACE ± .5 ANGULAR ±1/2° DRAFT WHERE APPLICABLE MUST REMAIN WITHIN DIMENSIONS	DIMENSION STYLE IN/MM DRAWN BY: MMAYO DATE: 9/8/10/06 CHECKED BY: JROBERTS DATE: 9/8/10/06 APPROVED BY: JROBERTS DATE: 9/8/10/06 MATERIAL NO. SEE CHART SIZE D THIS DRAWING CONTAINS INFORMATION THAT IS PROPRIETARY TO MOLEX INCORPORATED AND SHOULD NOT BE USED WITHOUT WRITTEN PERMISSION	SCALE 4:1 DESIGN UNITS INCH THIRD ANGLE PROJECTION GANGED INVERTED MODJACK ASSEMBLY molex DOCUMENT NO. SD-44248-001 SHEET NO. 4 OF 6
--	--------------------------------------	--	--	---

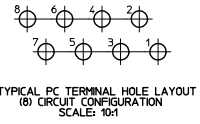
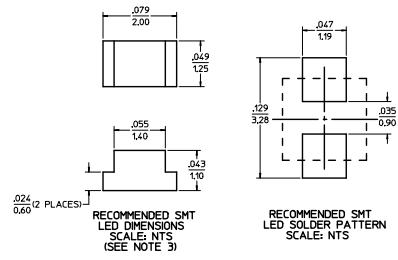
19 18 17 16 15 14 13 12 11 10 9 8 7 6 5 4 3 2 1



8 CIRCUIT PCB LAYOUT: COMPONENT SIDE
RECOMMENDED PCB THICKNESS: .062/1.57
TOLERANCE ±.003/.076 UNLESS OTHERWISE SPECIFIED

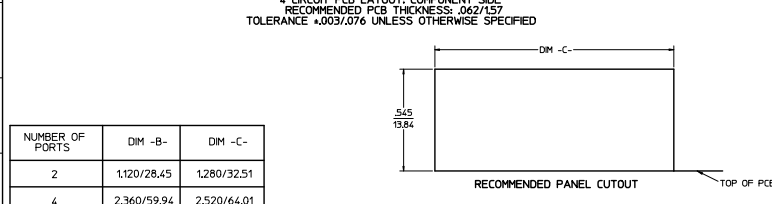
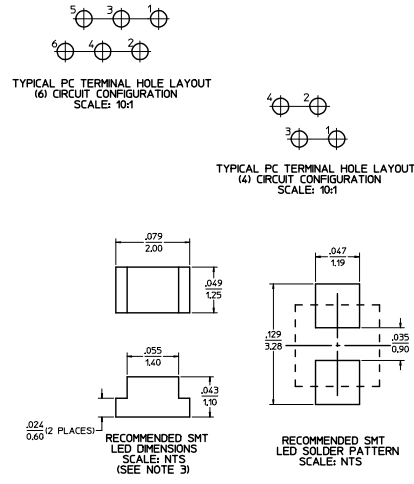
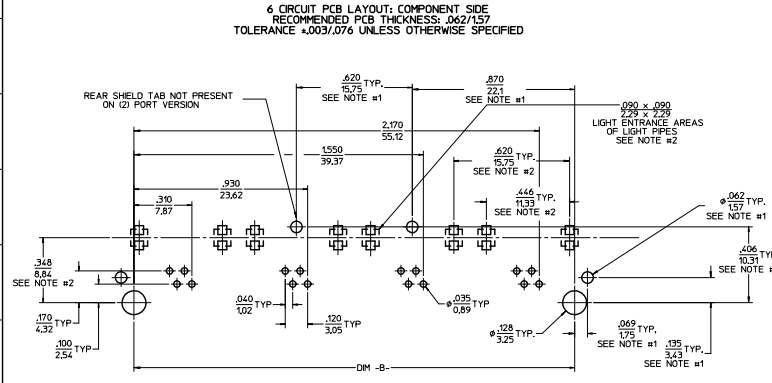
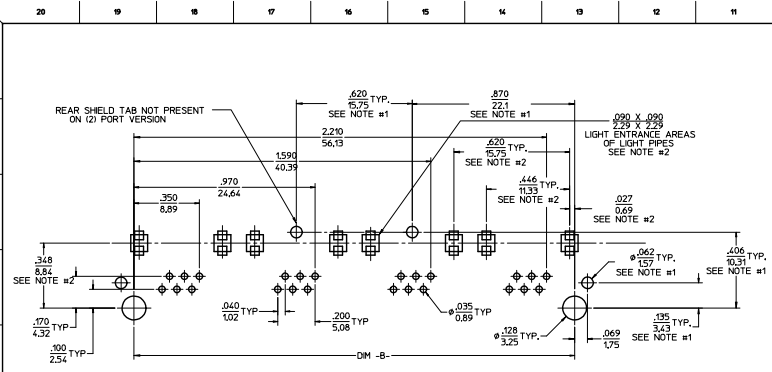


NUMBER OF PORTS	DIM -B-	DIM -C-
2	1.120/28.45	1.280/32.51
4	2.360/59.94	2.520/64.01



- NOTES:
- 1) DIMENSIONS MARKED "SEE NOTE #1" REFER TO ASSEMBLIES WITH THE SHIELDING OPTION INCLUDED
 - 2) DIMENSIONS MARKED "SEE NOTE #2" REFER TO ASSEMBLIES WITH THE LIGHT PIPE OPTION INCLUDED
 - 3) FOR CROSS REFERENCE OF RECOMMENDED LEADS SEE MOLEX WEB SITE.

SEE SHEET 1 REC. NO. 1027003-4879 CDR. NAME/DATE CHOKWELL 20/05/09 APPROVAL 20/06/09	QUALITY SYMBOLS	GENERAL TOLERANCES (UNLESS SPECIFIED)	DIMENSION STYLE IN/MM	SCALE 4:1	DESIGN UNITS INCH	THIRD ANGLE PROJECTION	
	4 PLACES ±--- ±--- 3 PLACES ±--- ±.010 2 PLACES ±.025 ±--- 1 PLACE ±--- ±---	mm INCH ±--- ±--- ±.010 ±.025 ±--- ±--- ±---	DRAWN BY MMAYO 98/10/06 CHECKED BY JROBERTS 98/10/06 APPROVED BY JROBERTS 98/10/06	MATERIAL NO. N/A	DOCUMENT NO. SD-44248-001	GANGED INVERTED MODJACK ASSEMBLY 	
	ANGULAR ±1/2° DRAFT WHERE APPLICABLE MUST REMAIN WITHIN DIMENSIONS	SIZE D	THIS DRAWING CONTAINS INFORMATION THAT IS PROPRIETARY TO MOLEX INCORPORATED AND SHOULD NOT BE USED WITHOUT WRITTEN PERMISSION				
	SHEET NO. 5 OF 6						



NUMBER OF PORTS	DIM -B-	DIM -C-
2	1,120/28.45	1,280/32.51
4	2,360/59.94	2,520/64.01

- NOTES:
 1) DIMENSIONS MARKED "SEE NOTE #1" REFER TO ASSEMBLIES WITH SHIELDING OPTION INCLUDED
 2) DIMENSIONS MARKED "SEE NOTE #2" REFER TO ASSEMBLIES WITH THE LIGHT PIPE OPTION INCLUDED
 3) FOR CROSS REFERENCE OF RECOMMENDED LED SEE MOLEX WEB SITE.

QUALITY SYMBOLS ▽=0 ▽=0 ▽=0 SEE SHEET 1 REC. NO. 0442480095-0879 DATE 2013/05/09 CHKD. BELL APPR. JROBERTS TEL: 800-670-7664	GENERAL TOLERANCES (UNLESS SPECIFIED) <table border="1"> <thead> <tr> <th>PLACES</th> <th>mm</th> <th>INCH</th> </tr> </thead> <tbody> <tr> <td>4</td> <td>±0.10</td> <td>±0.004</td> </tr> <tr> <td>3</td> <td>±0.15</td> <td>±0.006</td> </tr> <tr> <td>2</td> <td>±0.25</td> <td>±0.010</td> </tr> <tr> <td>1</td> <td>±0.50</td> <td>±0.020</td> </tr> <tr> <td>0</td> <td>±1.00</td> <td>±0.040</td> </tr> </tbody> </table>	PLACES	mm	INCH	4	±0.10	±0.004	3	±0.15	±0.006	2	±0.25	±0.010	1	±0.50	±0.020	0	±1.00	±0.040	DIMENSION STYLE IN/MM DRAWN BY: MMAYO DATE: 9/8/10/06 CHECKED BY: JROBERTS DATE: 9/8/10/06 APPROVED BY: JROBERTS DATE: 9/8/10/06 MATERIAL NO.: N/A DOCUMENT NO.: SD-44248-001	SCALE 4:1 DESIGN UNITS INCH THIRD ANGLE PROJECTION GANGED INVERTED MODJACK ASSEMBLY SHEET NO. 6 OF 6
	PLACES	mm	INCH																		
4	±0.10	±0.004																			
3	±0.15	±0.006																			
2	±0.25	±0.010																			
1	±0.50	±0.020																			
0	±1.00	±0.040																			
ANGULAR ±1/2° DRAFT WHERE APPLICABLE MUST REMAIN WITHIN DIMENSIONS SIZE D THIS DRAWING CONTAINS INFORMATION THAT IS PROPRIETARY TO MOLEX INCORPORATED AND SHOULD NOT BE USED WITHOUT WRITTEN PERMISSION																					