

## Excellent Integrated System Limited

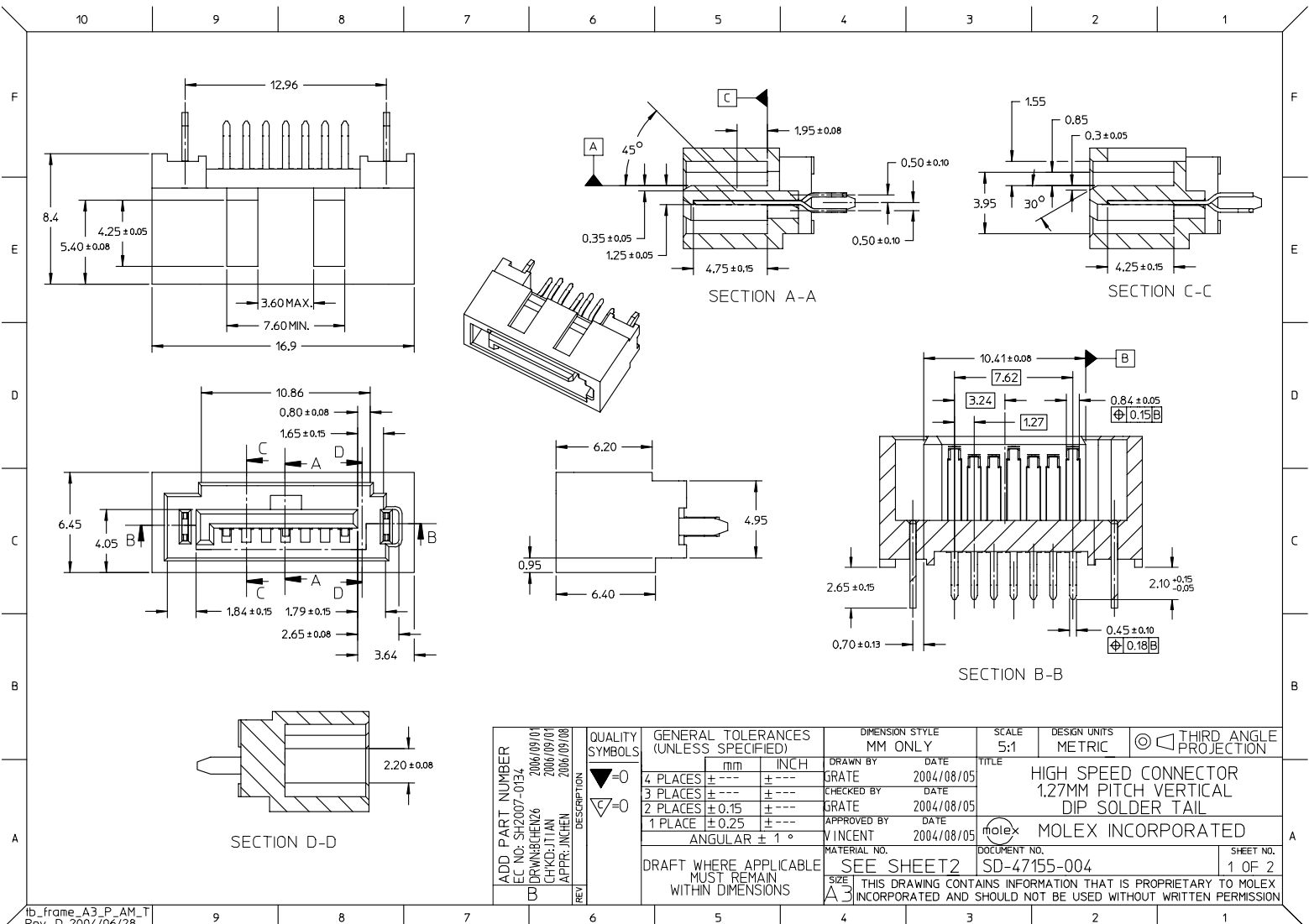
Stocking Distributor

Click to view price, real time Inventory, Delivery & Lifecycle Information:

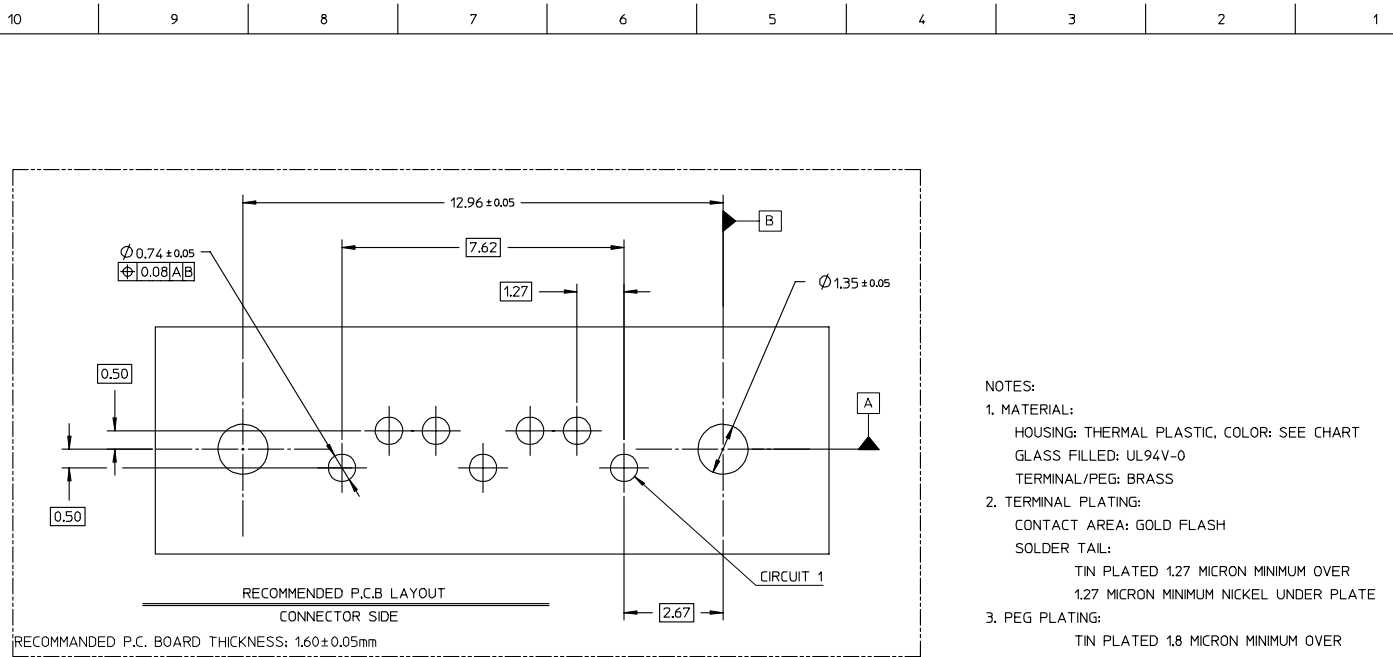
[Molex Connector Corporation](#)  
[0471554031](#)

For any questions, you can email us directly:

[sales@integrated-circuit.com](mailto:sales@integrated-circuit.com)



ADD PART NUMBER EC NO: SH2007-0134 DRAWN: BENZ6 CHKD: JIAN APPR: JICHEN 2006/09/01 2006/09/01 2006/09/08	QUALITY SYMBOLS ▽=0 ▽=0	GENERAL TOLERANCES (UNLESS SPECIFIED)		DIMENSION STYLE MM ONLY		SCALE 5:1	DESIGN UNITS METRIC	THIRD ANGLE PROJECTION	
		4 PLACES ± --- ± --- 3 PLACES ± --- ± --- 2 PLACES ± 0.15 ± --- 1 PLACE ± 0.25 ± ---	mm INCH	DRAWN BY GRATE	DATE 2004/08/05	TITLE HIGH SPEED CONNECTOR 1.27MM PITCH VERTICAL DIP SOLDER TAIL			
		ANGULAR ± 1 °		CHECKED BY GRATE	DATE 2004/08/05	MOLEX INCORPORATED			
		DRAFT WHERE APPLICABLE MUST REMAIN WITHIN DIMENSIONS		APPROVED BY VINCENT	DATE 2004/08/05	MATERIAL NO. SEE SHEET 2	DOCUMENT NO. SD-47155-004	SHEET NO. 1 OF 2	



NOTES:

1. MATERIAL:
  - HOUSING: THERMAL PLASTIC, COLOR: SEE CHART
  - GLASS FILLED: UL94V-0
  - TERMINAL/PEG: BRASS
2. TERMINAL PLATING:
  - CONTACT AREA: GOLD FLASH
  - SOLDER TAIL:
    - TIN PLATED 1.27 MICRON MINIMUM OVER
    - 1.27 MICRON MINIMUM NICKEL UNDER PLATE
3. PEG PLATING:
  - TIN PLATED 1.8 MICRON MINIMUM OVER
  - 1.27 MICRON MINIMUM NICKEL UNDER PLATE
4. PACKAGING: PK-67800-002
5. PRODUCT SPECIFICATION REFER TO PS-67490-001
6. RECOMMENDED PROCESS: WAVE SOLDERING
7. PRODUCT COMPLIANT TO RoHS DIRECTIVE 2002/95/EC AND ELV DIRECTIVE 2000/53/EC\*

471554061	SEE NOTE2	IVORY
471554051	SEE NOTE2	LIGHT BLUE
471554041	SEE NOTE2	NATURE COLOR
471554031	SEE NOTE2	PROCESS BLUE C DELTA E<3
471554001	SEE NOTE2	BLACK
MATERIAL NUMBER	PLATING TYPE	PLASTIC COLOR



ADD PART NUMBER EC NO: SH2007-0134 DRAWN: BRENZHE26 CHKD: JIJIAN APPR: JICHEN	QUALITY SYMBOLS ▽=0 ▽=0	GENERAL TOLERANCES (UNLESS SPECIFIED)		DIMENSION STYLE MM ONLY		SCALE 1:1	DESIGN UNITS METRIC	THIRD ANGLE PROJECTION	
		4 PLACES ± --- ± --- 3 PLACES ± --- ± --- 2 PLACES ± 0.15 ± --- 1 PLACE ± 0.25 ± ---	mm      INCH	DRAWN BY GRATE	DATE 2004/08/05	TITLE HIGH SPEED CONNECTOR 1.27MM PITCH VERTICAL DIP SOLDER TAIL			
		ANGULAR ± 1 °		CHECKED BY GRATE	DATE 2004/08/05	APPROVED BY VINCENT			DATE 2004/08/05
		DRAFT WHERE APPLICABLE MUST REMAIN WITHIN DIMENSIONS		MATERIAL NO. SEE TABLE		DOCUMENT NO. SD-47155-004			SHEET NO. 2 OF 2