

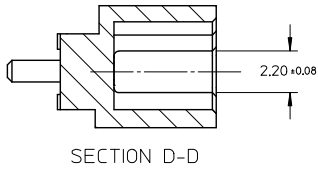
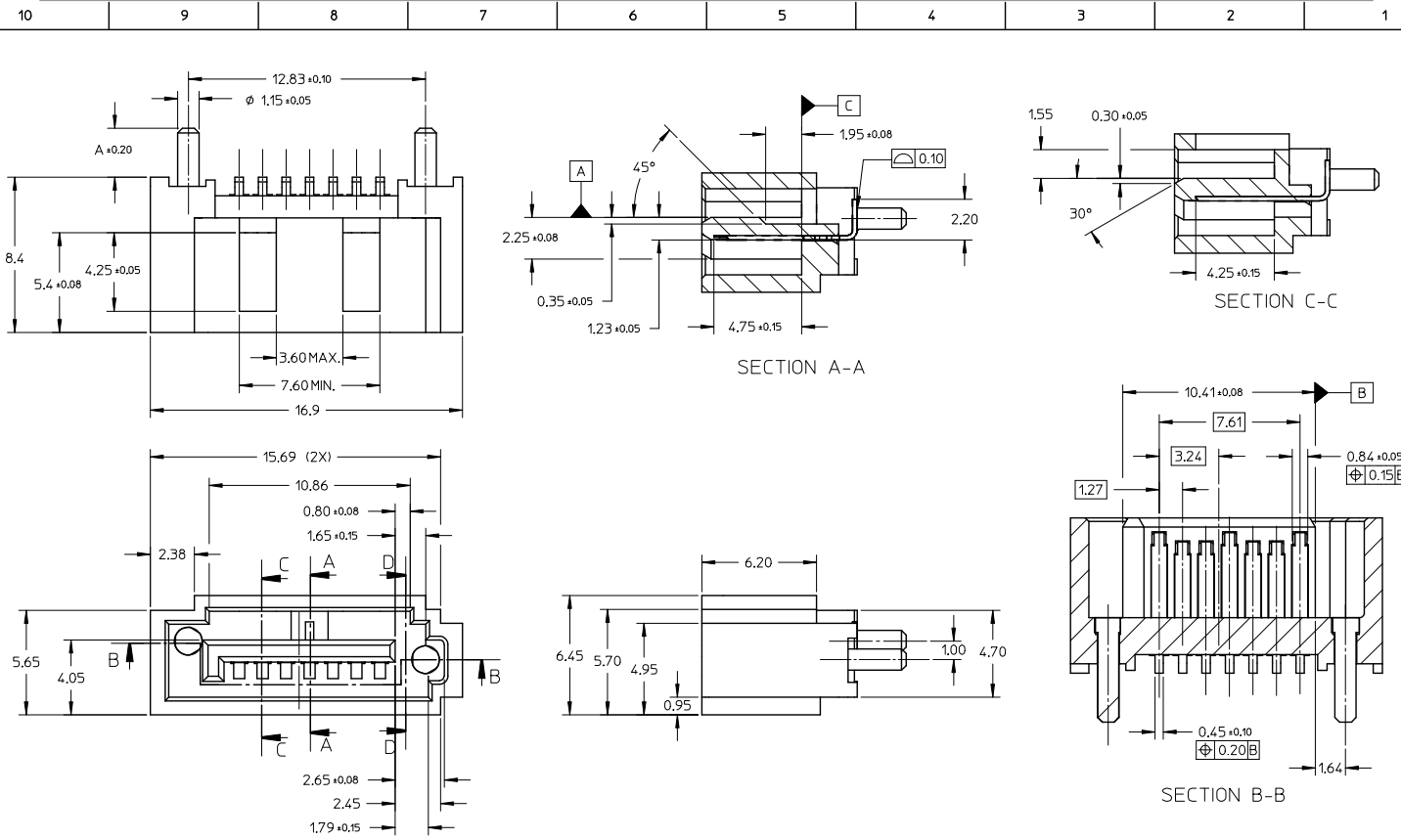
Excellent Integrated System Limited

Stocking Distributor

Click to view price, real time Inventory, Delivery & Lifecycle Information:

[Molex Connector Corporation](#)
[0473065001](#)

For any questions, you can email us directly:
sales@integrated-circuit.com

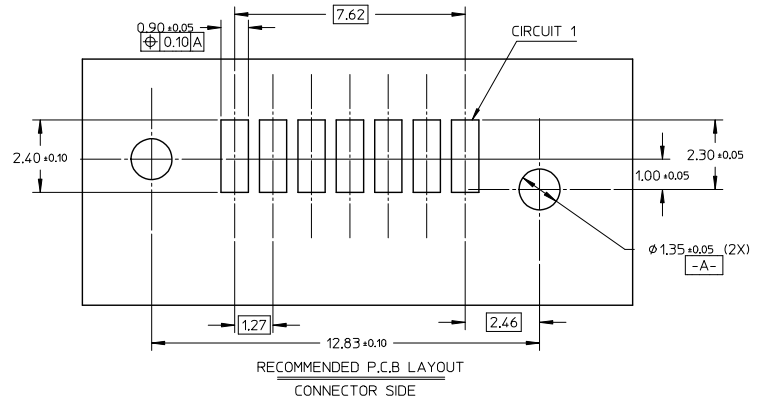


ADD NEW PART EC NO: SH2015-0307 T: DRW: GLLI CHKD: GLLI APPR: AYIN REV: 2014/10/30 2015/03/16	QUALITY SYMBOLS √=0 √=0 √=0	GENERAL TOLERANCES (UNLESS SPECIFIED)		DIMENSION STYLE MM ONLY		SCALE 5:1	DESIGN UNITS METRIC	THIRD ANGLE PROJECTION	
		4 PLACES ± --- ± ---	mm INCH	DRAWN BY GLLI	DATE 2014/10/30	TITLE HIGH SPEED CONNECTOR 1.27MM PITCH VERTICAL SMT SOLDER TAIL			
		3 PLACES ± --- ± ---		CHECKED BY GLLI	DATE 2014/10/30	APPROVED BY AYIN			
		2 PLACES ± 0.15 ± ---		APPROVED BY AYIN	DATE 2015/03/16	MATERIAL NO. SEE SHEET 2			
		1 PLACE ± 0.25 ± ---		DRAFT WHERE APPLICABLE MUST REMAIN WITHIN DIMENSIONS		DOCUMENT NO. SD-47306-001		SHEET NO. 1 OF 2	
		0 PLACE ± --- ± ---		THIS DRAWING CONTAINS INFORMATION THAT IS PROPRIETARY TO MOLEX INCORPORATED AND SHOULD NOT BE USED WITHOUT WRITTEN PERMISSION					

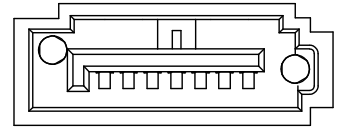
10 9 8 7 6 5 4 3 2 1

NOTES:

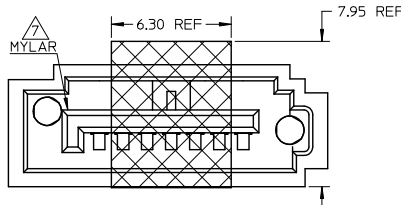
- MATERIAL:
 - HOUSING: HIGH TEMPERATURE THERMAL PLASTIC, GLASS FILLED, UL94V-0, COLOR: BLACK
 - TERMINAL: BRASS
 - POST: BRASS
- TERMINAL PLATING:
 - CONTACT AREA: (a) GOLD FLASH
 - (b) GOLD, THICKNESS=0.76 MICRON MINIMUM
 - (c) GOLD, THICKNESS=0.38 MICRON MINIMUM
 - SOLDER TAIL: TIN, THICKNESS=1.27 MICRON MINIMUM
 - UNDER PLATE: NICKEL, THICKNESS=1.27 MICRON MINIMUM
- POST PLATING: UNDER PLATE: NICKEL, THICKNESS=1.25 MICRON MINIMUM
- TIN, THICKNESS=1.9 MICRON MINIMUM OVER ALL
- PACKAGING: TAPE REEL
- PRODUCT SPECIFICATION REFER TO PS-67491-001
- RECOMMENDED SOLDERING PROCESS: IR PROCESS
- THE MYLAR STICKED ON THE HOUSING IS JUST USED FOR PICK-UP PLACE, PLEASE REMOVE IT AFTER REFLOW



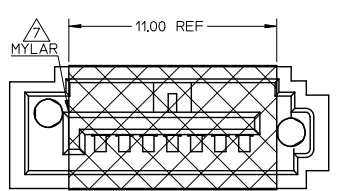
RECOMMENDED P.C.B LAYOUT
CONNECTOR SIDE



WITHOUT MYLAR TYPE



WITH MYLAR TYPE
(ONLY FOR 47306-5006 AND 47306-5026)



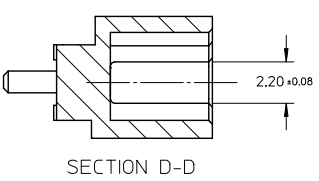
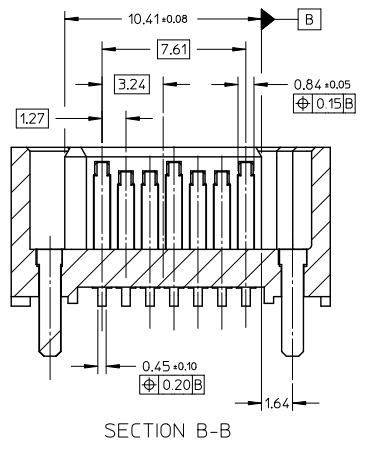
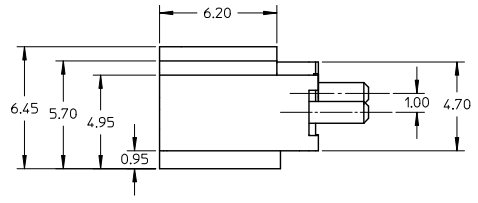
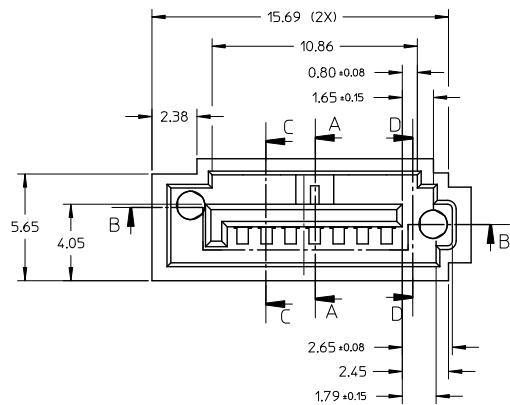
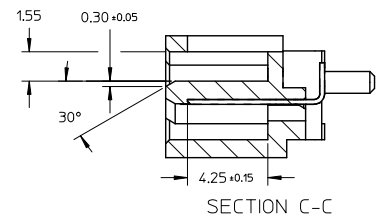
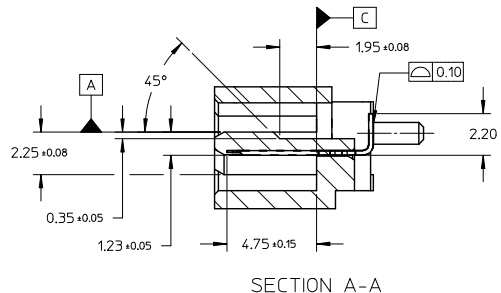
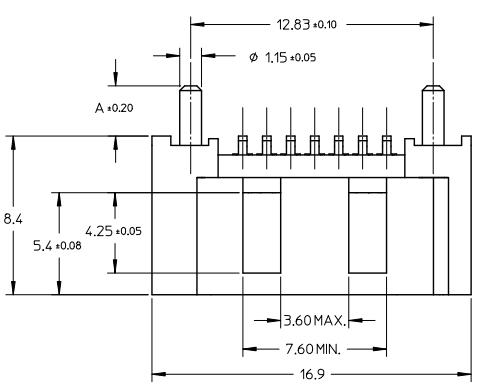
WITH MYLAR TYPE

473065033	SEE NOTE2(b)	2.65	WITH	PK-47306-001	NATURAL
473065013	SEE NOTE2(b)	2.65	WITH	PK-47306-001	BLUE
473062105	SEE NOTE2(c)	2.65	WITHOUT	PK-47306-002	
473062102	SEE NOTE2(b)				
473062101	SEE NOTE2(a)	3.45	WITH	PK-47306-001	BLACK
473065026	SEE NOTE2(c)				
473065025	SEE NOTE2(c)	3.05	WITH	PK-47306-001	BLACK
473065022	SEE NOTE2(b)				
473065021	SEE NOTE2(a)	3.05	WITH	PK-47306-001	BLACK
473065015	SEE NOTE2(c)				
473065012	SEE NOTE2(b)	2.65	WITHOUT	PK-47306-001	BLACK
473065011	SEE NOTE2(a)				
473065005	SEE NOTE2(c)	3.45	WITHOUT	PK-47306-001	BLACK
473065006	SEE NOTE2(c)				
473065002	SEE NOTE2(b)	3.05	WITHOUT	PK-47306-001	BLACK
473065001	SEE NOTE2(a)				
473062025	SEE NOTE2(c)	2.65	WITHOUT	PK-47306-001	BLACK
473062022	SEE NOTE2(b)				
473062021	SEE NOTE2(a)	3.05	WITHOUT	PK-47306-001	BLACK
473062015	SEE NOTE2(c)				
473062012	SEE NOTE2(b)	2.65	WITHOUT	PK-47306-001	BLACK
473062011	SEE NOTE2(a)				
473062005	SEE NOTE2(c)	2.65	WITHOUT	PK-47306-001	BLACK
473062002	SEE NOTE2(b)				
473062001	SEE NOTE2(a)				

SEE SHEET 1 EC NO: SH2015-0307 TDRWINGLLI 2014/10/30 CHKD: APPR: AYIN 2015/03/16	QUALITY SYMBOLS √=0 √=0 √=0	GENERAL TOLERANCES (UNLESS SPECIFIED) <table border="1"> <tr> <td></td> <td>mm</td> <td>INCH</td> </tr> <tr> <td>4 PLACES</td> <td>±---</td> <td>±---</td> </tr> <tr> <td>3 PLACES</td> <td>±---</td> <td>±---</td> </tr> <tr> <td>2 PLACES</td> <td>±0.15</td> <td>±---</td> </tr> <tr> <td>1 PLACE</td> <td>±0.25</td> <td>±---</td> </tr> <tr> <td>0 PLACE</td> <td>±---</td> <td>±---</td> </tr> </table>		mm	INCH	4 PLACES	±---	±---	3 PLACES	±---	±---	2 PLACES	±0.15	±---	1 PLACE	±0.25	±---	0 PLACE	±---	±---	DIMENSION STYLE MM ONLY	SCALE 8:1	DESIGN UNITS METRIC	THIRD ANGLE PROJECTION	TITLE HIGH SPEED CONNECTOR 1.27MM PITCH VERTICAL SMT SOLDER TAIL
				mm	INCH																				
4 PLACES	±---	±---																							
3 PLACES	±---	±---																							
2 PLACES	±0.15	±---																							
1 PLACE	±0.25	±---																							
0 PLACE	±---	±---																							
DRAFT WHERE APPLICABLE MUST REMAIN WITHIN DIMENSIONS	DRAWN BY GLLI	DATE 2014/10/30	CHECKED BY DATE	APPROVED BY AYIN	DATE 2015/03/16																				
MATERIAL NO. SEE CHART		DOCUMENT NO. SD-47306-001		SHEET NO. 2 OF 2		THIS DRAWING CONTAINS INFORMATION THAT IS PROPRIETARY TO MOLEX INCORPORATED AND SHOULD NOT BE USED WITHOUT WRITTEN PERMISSION																			

ib_frame_A3_P_AM_T 9 8 7 6 5 4 3 2 1 Rev. G 2012/01/11

10 9 8 7 6 5 4 3 2 1



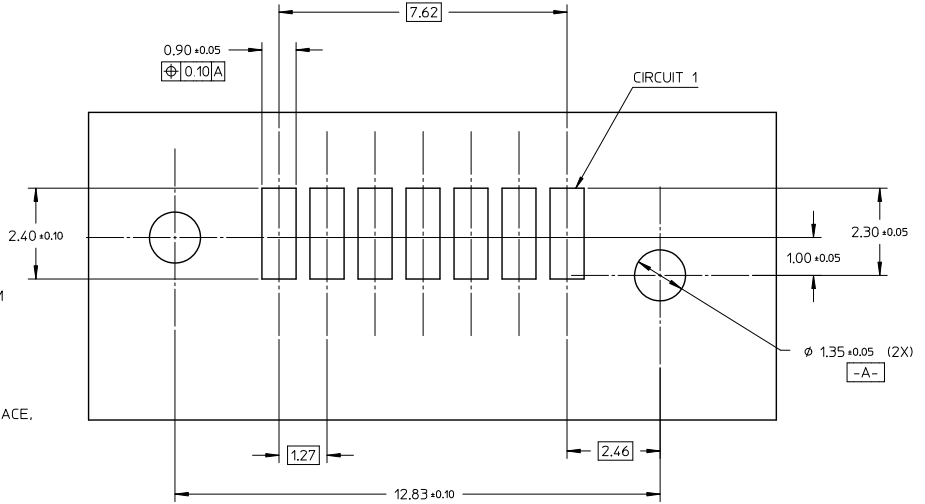
ADD PART NUMBER EC NO. SH2010-0232 DRAWN BY: DRW:KJ.SONG CHECKED BY: CHK:KJ.SONG APPROVED BY: APP:RZ.FANG 2010/01/07 2010/01/11 2010/07/14	QUALITY SYMBOLS ▽=0 ▽=0	GENERAL TOLERANCES (UNLESS SPECIFIED) mm INCH 4 PLACES ± --- ± --- 3 PLACES ± --- ± --- 2 PLACES ± 0.15 ± --- 1 PLACE ± 0.25 ± --- ANGULAR ± 1 °	DIMENSION STYLE MM ONLY	SCALE 5:1 DESIGN UNITS METRIC THIRD ANGLE PROJECTION	TITLE HIGH SPEED CONNECTOR 1.27MM PITCH VERTICAL SMT SOLDER TAIL MOLEX INCORPORATED MATERIAL NO. SEE SHEET 2 DOCUMENT NO. SD-47306-001 SHEET NO. 1 OF 2	
	DRAWN BY: JENNY DATE: 2005/07/22	CHECKED BY: GRMA DATE: 2005/07/22	APPROVED BY: YAP DATE: 2005/07/22	MOLEX		
	DRAFT WHERE APPLICABLE MUST REMAIN WITHIN DIMENSIONS			SIZE A3		THIS DRAWING CONTAINS INFORMATION THAT IS PROPRIETARY TO MOLEX INCORPORATED AND SHOULD NOT BE USED WITHOUT WRITTEN PERMISSION

9 8 7 6 5 4 3 2 1

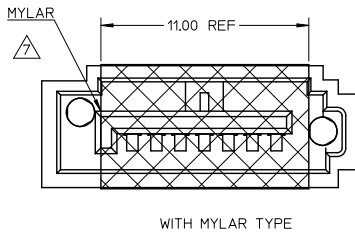
10 9 8 7 6 5 4 3 2 1

NOTES:

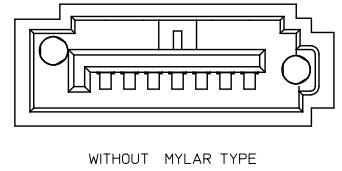
- MATERIAL:
 - HOUSING: HIGH TEMPERATURE THERMAL PLASTIC, GLASS FILLED, UL94V-0, COLOR: BLACK
 - TERMINAL: BRASS
 - POST: BRASS
- TERMINAL PLATING:
 - CONTACT AREA: (a) GOLD FLASH
 - (b) GOLD, THICKNESS=0.76 MICRON MINIMUM
 - (c) GOLD, THICKNESS=0.38 MICRON MINIMUM
 - SOLDER TAIL: TIN, THICKNESS=1.27 MICRON MINIMUM
 - UNDER PLATE: NICKEL, THICKNESS=1.27 MICRON MINIMUM
- POST PLATING: UNDER PLATE: NICKEL, THICKNESS=1.25 MICRON MINIMUM
TIN, THICKNESS=1.9 MICRON MINIMUM OVER ALL
- PACKAGING: TAPE REEL
- PRODUCT SPECIFICATION REFER TO PS-67491-001
- RECOMMENDED SOLDERING PROCESS: IR PROCESS
- THE MYLAR STICKED ON THE HOUSING IS JUST USED FOR PICK-UP PLACE, PLEASE REMOVE IT AFTER REFLOW



473062105	SEE NOTE2(c)	2.65	WITHOUT	PK-47306-002
473062102	SEE NOTE2(b)			
473062101	SEE NOTE2(a)			
473065025	SEE NOTE2(c)	3.45	WITH	PK-47306-001
473065022	SEE NOTE2(b)			
473065021	SEE NOTE2(a)			
473065015	SEE NOTE2(c)	3.05		
473065012	SEE NOTE2(b)			
473065011	SEE NOTE2(a)			
473065010	SEE NOTE2(c)	2.65	WITHOUT	PK-47306-001
473065005	SEE NOTE2(b)			
473065002	SEE NOTE2(a)			
473062025	SEE NOTE2(c)	3.45		
473062022	SEE NOTE2(b)			
473062021	SEE NOTE2(a)			
473062015	SEE NOTE2(c)	3.05	WITHOUT	PK-47306-001
473062012	SEE NOTE2(b)			
473062011	SEE NOTE2(a)			
473062005	SEE NOTE2(c)	2.65		
473062002	SEE NOTE2(b)			
473062001	SEE NOTE2(a)			
MATERIAL NO	PLATING TYPE	DIM A	MYLAR	PACKING



RECOMMENDED P.C.B LAYOUT
CONNECTOR SIDE



SEE SHEET1 EC NO: SH2010-022 FIDRINXI SONG 2010/07/07 CHIKDXI SONG 2010/07/11 APPR:RZTHANG 2010/07/14 REV DESCRIPTION	QUALITY SYMBOLS	GENERAL TOLERANCES (UNLESS SPECIFIED)	DIMENSION STYLE	SCALE	DESIGN UNITS	THIRD ANGLE PROJECTION
	$\nabla=0$ $\nabla=0$	mm INCH 4 PLACES ± --- ± --- 3 PLACES ± --- ± --- 2 PLACES ± 0.15 ± --- 1 PLACE ± 0.25 ± --- ANGULAR ± 1 °	MM ONLY	5:1	METRIC	DRAWN BY DATE JENNY 2005/07/22 CHECKED BY DATE GRMA 2005/07/22 APPROVED BY DATE YAP 2005/07/22
		DRAFT WHERE APPLICABLE MUST REMAIN WITHIN DIMENSIONS				TITLE HIGH SPEED CONNECTOR 1.27MM PITCH VERTICAL SMT SOLDER TAIL MOLEX INCORPORATED
						MATERIAL NO. SEE TABLE DOCUMENT NO. SD-47306-001 SHEET NO. 2 OF 2

ib_frame_A3_P_AM_T 9 8 7 6 5 4 3 2 1
Rev. F 2006/09/16